

CSA, ULI

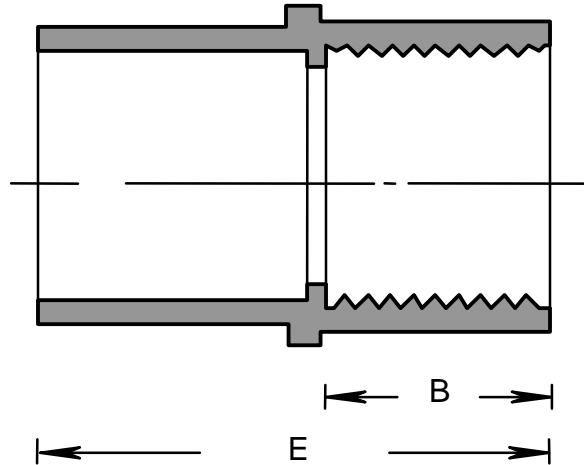
RIGID PVC CONDUIT FITTINGS - KRALOY

FEMALE ADAPTER

ISSUE DATE:  
DATE D'EMISSION: 2007 08 30

SUPERCEDES:  
REPLACE: 2006 08 30

5



| PRODUCT CODE | PART NUMBER | NOMINAL SIZE |      | E     |      | B     |      |
|--------------|-------------|--------------|------|-------|------|-------|------|
|              |             | (in)         | (mm) | (in)  | (mm) | (in)  | (mm) |
| 078070       | FA05        | 1/2          | 16   | 1.400 | 36   | 0.700 | 18   |
| 078071       | FA07        | 3/4          | 21   | 1.550 | 39   | 0.765 | 19   |
| 078072       | FA10        | 1            | 27   | 2.000 | 51   | 1.000 | 25   |
| 078073       | FA12        | 1 1/4        | 35   | 2.065 | 52   | 1.000 | 25   |
| 078074       | FA15        | 1 1/2        | 41   | 2.185 | 55   | 1.000 | 25   |
| 078075       | FA20        | 2            | 53   | 2.260 | 57   | 1.000 | 25   |
| 078076       | FA25        | 2 1/2        | 63   | 2.290 | 58   | 1.000 | 25   |
| 078077       | FA30        | 3            | 78   | 2.950 | 75   | 1.145 | 29   |
| 078078       | FA35        | 3 1/2        | 91   | 4.100 | 104  | 1.800 | 46   |
| 078079       | FA40        | 4            | 103  | 3.120 | 79   | 1.150 | 29   |
| 078080       | FA50        | 5            | 129  | 3.750 | 95   | 1.520 | 39   |
| 078081       | FA60        | 6            | 155  | 4.062 | 103  | 1.500 | 38   |
| 178035*      | FA12        | 1 1/4        | 35   | 2.065 | 52   | 1.000 | 25   |
| 178037*      | FA20        | 2            | 53   | 2.260 | 57   | 1.000 | 25   |
| 178145*      | FA25        | 2 1/2        | 63   | 2.290 | 58   | 1.000 | 25   |

NPT TAPPED THREAD FOR ALL FEMALE ADAPTERS

\* For Pacific Circle

CSA, ULI

RIGID PVC CONDUIT FITTINGS - KRALOY

FEMALE ADAPTER

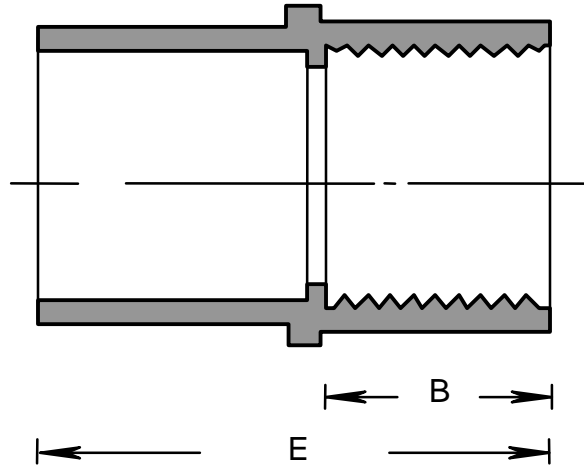
ISSUE DATE:

DATE D'EMISSION: 2007 08 30

SUPERCEDES:

REPLACE: 2006 08 30

5



| PRODUCT CODE | PART NUMBER | NOMINAL SIZE |      | E     |      | B     |      |
|--------------|-------------|--------------|------|-------|------|-------|------|
|              |             | (in)         | (mm) | (in)  | (mm) | (in)  | (mm) |
| 078070       | FA05        | 1/2          | 16   | 1.400 | 36   | 0.700 | 18   |
| 078071       | FA07        | 3/4          | 21   | 1.550 | 39   | 0.765 | 19   |
| 078072       | FA10        | 1            | 27   | 2.000 | 51   | 1.000 | 25   |
| 078073       | FA12        | 1 1/4        | 35   | 2.065 | 52   | 1.000 | 25   |
| 078074       | FA15        | 1 1/2        | 41   | 2.185 | 55   | 1.000 | 25   |
| 078075       | FA20        | 2            | 53   | 2.260 | 57   | 1.000 | 25   |
| 078076       | FA25        | 2 1/2        | 63   | 2.290 | 58   | 1.000 | 25   |
| 078077       | FA30        | 3            | 78   | 2.950 | 75   | 1.145 | 29   |
| 078078       | FA35        | 3 1/2        | 91   | 4.100 | 104  | 1.800 | 46   |
| 078079       | FA40        | 4            | 103  | 3.120 | 79   | 1.150 | 29   |
| 078080       | FA50        | 5            | 129  | 3.750 | 95   | 1.520 | 39   |
| 078081       | FA60        | 6            | 155  | 4.062 | 103  | 1.500 | 38   |
| 178035*      | FA12        | 1 1/4        | 35   | 2.065 | 52   | 1.000 | 25   |
| 178037*      | FA20        | 2            | 53   | 2.260 | 57   | 1.000 | 25   |
| 178145*      | FA25        | 2 1/2        | 63   | 2.290 | 58   | 1.000 | 25   |

NPT TAPPED THREAD FOR ALL FEMALE ADAPTERS

\* For Pacific Circle