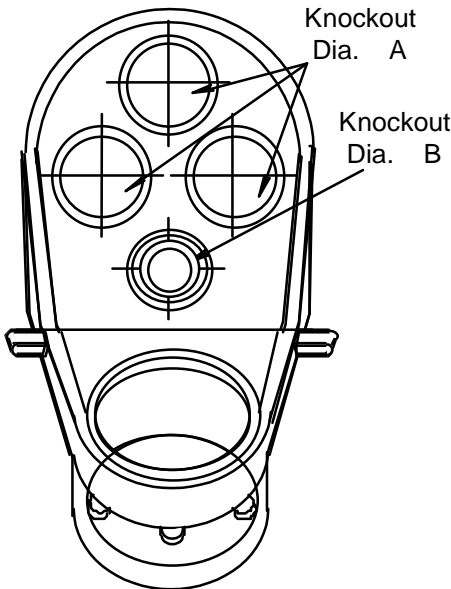


| PRODUCT CODE | PART NUMBER | NOMINAL SIZE |      | L      |       | W      |       | H      |       |
|--------------|-------------|--------------|------|--------|-------|--------|-------|--------|-------|
|              |             | (in)         | (mm) | (in)   | (mm)  | (in)   | (mm)  | (in)   | (mm)  |
| 078302       | MH05        | 1/2          | 16   | 3.000  | 76.2  | 2.000  | 50.8  | 1.750  | 44.5  |
| 078303       | MH07        | 3/4          | 21   | 3.000  | 76.2  | 2.000  | 50.8  | 1.750  | 44.5  |
| 078304**     | MH10        | 1            | 27   | 3.700  | 94.0  | 3.000  | 76.2  | 2.500  | 63.5  |
| 078305       | MH12        | 1 1/4        | 35   | 5.100  | 129.5 | 3.000  | 76.2  | 2.500  | 63.5  |
| 078306       | MH15        | 1 1/2        | 41   | 6.700  | 170.2 | 4.000  | 101.6 | 3.440  | 87.4  |
| 078307       | MH20        | 2            | 53   | 6.700  | 170.2 | 4.000  | 101.6 | 3.440  | 87.4  |
| 078308       | MH25        | 2 1/2        | 63   | 12.400 | 315.0 | 7.500  | 190.5 | 6.060  | 153.9 |
| 078309       | MH30        | 3            | 78   | 12.400 | 315.0 | 7.500  | 190.5 | 6.060  | 153.9 |
| 078310**     | MH35        | 3 1/2        | 91   | 12.400 | 315.0 | 7.500  | 190.5 | 6.060  | 153.9 |
| 078311       | MH40        | 4            | 103  | 15.200 | 386.1 | 11.250 | 285.8 | 10.380 | 263.7 |
| 178135       | MH12        | 1 1/4        | 35   | 5.100  | 129.5 | 3.000  | 76.2  | 2.500  | 63.5  |
| 178136       | MH15        | 1 1/2        | 41   | 6.700  | 170.2 | 4.000  | 101.6 | 3.440  | 87.4  |
| 178137       | MH20        | 2            | 53   | 6.700  | 170.2 | 4.000  | 101.6 | 3.440  | 87.4  |

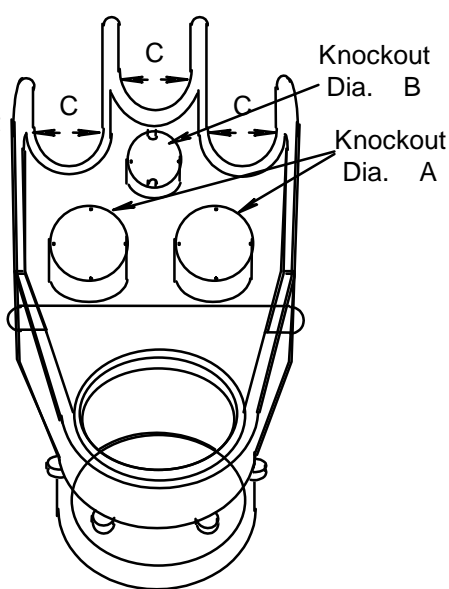
| PRODUCT CODE | PART NUMBER | NOMINAL SIZE |      | SHELL/ BODY CODE | FORK CODE | SOLVENT WELDED BUSHING/ N. COUPLING |           |
|--------------|-------------|--------------|------|------------------|-----------|-------------------------------------|-----------|
|              |             | (in)         | (mm) |                  |           | CODE                                | SIZE      |
| 078302       | MH05        | 1/2          | 16   | 077382           |           | 097554                              | 3/4X1/2"  |
| 078303       | MH07        | 3/4          | 21   |                  |           |                                     |           |
| 078304**     | MH10        | 1            | 27   |                  |           |                                     |           |
| 078305       | MH12        | 1 1/4        | 35   |                  |           |                                     |           |
| 078306       | MH15        | 1 1/2        | 41   | 077386           |           | 097557                              | 2X 1 1/2" |
| 078307       | MH20        | 2            | 53   |                  |           |                                     |           |
| 078308       | MH25        | 2 1/2        | 63   | 097252           | 097973    | 097558                              | 3X 1 1/2" |
| 078309       | MH30        | 3            | 78   | 097252           | 097973    |                                     |           |
| 078310**     | MH35        | 3 1/2        | 91   | 097252           | 097973    | 097976                              | 3 1/2X3"  |
| 078311       | MH40        | 4            | 103  | 097254           | 097975    |                                     |           |
| 178135       | MH12        | 1 1/4        | 35   |                  |           |                                     |           |
| 178136       | MH15        | 1 1/2        | 41   | 077386           |           | 097557                              | 2X 1 1/2" |
| 178137       | MH20        | 2            | 53   |                  |           |                                     |           |

\*\* CODES 077283 AND 077289 ARE NOT UL LISTED

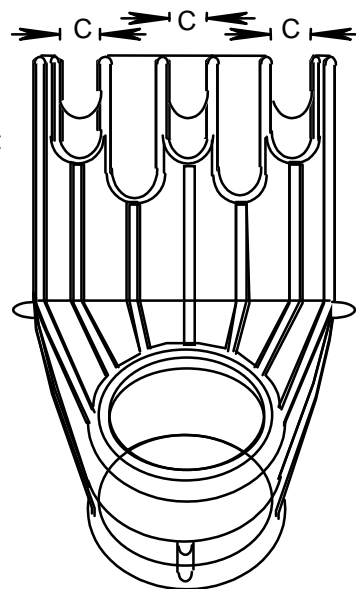
MAST HEADS



FORK FOR EF10 TO EF20



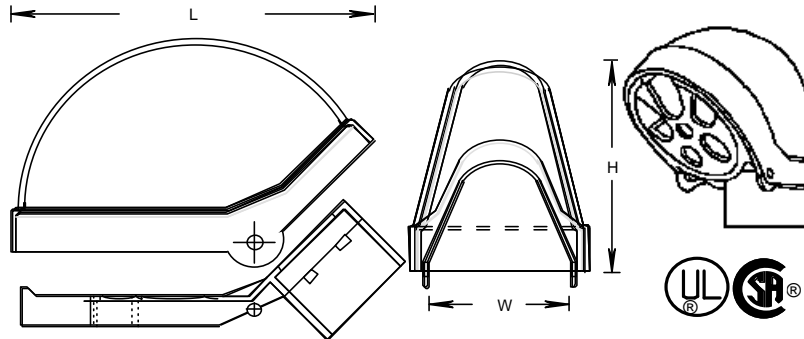
FORK FOR EF25 TO EF50



FORK FOR EF55

| PRODUCT CODE | PART NUMBER | NOMINAL SIZE |      | KNOCKOUTS |      |       |      | C     |      |
|--------------|-------------|--------------|------|-----------|------|-------|------|-------|------|
|              |             |              |      | A         |      | B     |      |       |      |
|              |             | (in)         | (mm) | (in)      | (mm) | (in)  | (mm) | (in)  | (mm) |
| 078302       | MH05        | 1/2          | 16   | 0.435     | 11.1 | 0.330 | 10.3 | -     | -    |
| 078303       | MH07        | 3/4          | 21   | 0.430     | 11.1 | 0.330 | 10.3 | -     | -    |
| 078304**     | MH10        | 1            | 27   | 0.560     | 14.2 | 1.000 | 25.4 | -     | -    |
| 078305       | MH12        | 1 1/4        | 35   | 0.750     | 19.1 | 0.500 | 12.7 | 0.750 | 19.1 |
| 078306       | MH15        | 1 1/2        | 41   | 0.810     | 20.6 | 0.500 | 12.7 | 0.875 | 22.2 |
| 078307       | MH20        | 2            | 53   | 0.810     | 20.6 | 0.500 | 12.7 | 0.875 | 22.2 |
| 078308       | MH25        | 2 1/2        | 63   | 1.250     | 31.8 | 1.250 | 31.8 | 1.750 | 44.5 |
| 078309       | MH30        | 3            | 78   | 1.250     | 31.8 | 1.250 | 31.8 | 1.750 | 44.5 |
| 078310**     | MH35        | 3 1/2        | 91   | 1.250     | 31.8 | 1.250 | 31.8 | 1.750 | 44.5 |
| 078311       | MH40        | 4            | 103  | 1.530     | 28.9 | 1.530 | 28.9 | 1.530 | 38.9 |
| 178135       | MH12        | 1 1/4        | 35   | 0.750     | 19.1 | 0.500 | 12.7 | 0.750 | 19.1 |
| 178136       | MH15        | 1 1/2        | 41   | 0.810     | 20.6 | 0.500 | 12.7 | 0.875 | 22.2 |
| 178137       | MH20        | 2            | 53   | 0.810     | 20.6 | 0.500 | 12.7 | 0.875 | 22.2 |

Filename: KRALOY-32.doc  
Directory: \\Bersrvbdc\bergen\QC MANUAL  
Template: C:\Documents and Settings\joelau\Application  
Data\Microsoft\Templates\Normal.dot  
Title: SOCKET DIMENSION  
Subject:  
Author: joe lau  
Keywords:  
Comments:  
Creation Date: 1/2/2001 12:50 PM  
Change Number: 7  
Last Saved On: 4/14/2004 3:49 PM  
Last Saved By: Joe Lau  
Total Editing Time: 9 Minutes  
Last Printed On: 8/8/2005 12:33 PM  
As of Last Complete Printing  
Number of Pages: 2  
Number of Words: 337 (approx.)  
Number of Characters: 1,927 (approx.)

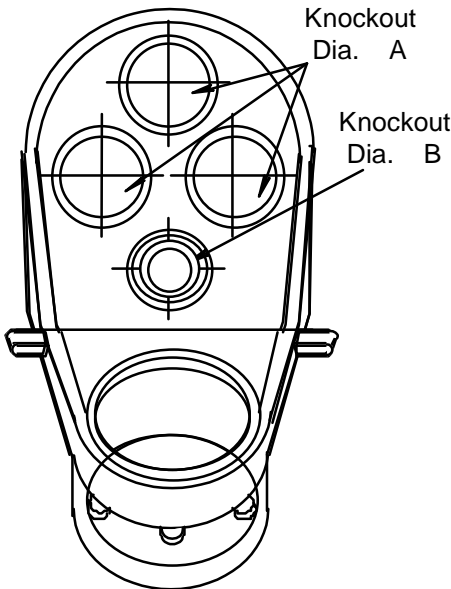


| PRODUCT CODE | PART NUMBER | NOMINAL SIZE |      | L      |       | W      |       | H      |       |
|--------------|-------------|--------------|------|--------|-------|--------|-------|--------|-------|
|              |             | (in)         | (mm) | (in)   | (mm)  | (in)   | (mm)  | (in)   | (mm)  |
| 078302       | MH05        | 1/2          | 16   | 3.000  | 76.2  | 2.000  | 50.8  | 1.750  | 44.5  |
| 078303       | MH07        | 3/4          | 21   | 3.000  | 76.2  | 2.000  | 50.8  | 1.750  | 44.5  |
| 078304**     | MH10        | 1            | 27   | 3.700  | 94.0  | 3.000  | 76.2  | 2.500  | 63.5  |
| 078305       | MH12        | 1 1/4        | 35   | 5.100  | 129.5 | 3.000  | 76.2  | 2.500  | 63.5  |
| 078306       | MH15        | 1 1/2        | 41   | 6.700  | 170.2 | 4.000  | 101.6 | 3.440  | 87.4  |
| 078307       | MH20        | 2            | 53   | 6.700  | 170.2 | 4.000  | 101.6 | 3.440  | 87.4  |
| 078308       | MH25        | 2 1/2        | 63   | 12.400 | 315.0 | 7.500  | 190.5 | 6.060  | 153.9 |
| 078309       | MH30        | 3            | 78   | 12.400 | 315.0 | 7.500  | 190.5 | 6.060  | 153.9 |
| 078310**     | MH35        | 3 1/2        | 91   | 12.400 | 315.0 | 7.500  | 190.5 | 6.060  | 153.9 |
| 078311       | MH40        | 4            | 103  | 15.200 | 386.1 | 11.250 | 285.8 | 10.380 | 263.7 |
| 178135       | MH12        | 1 1/4        | 35   | 5.100  | 129.5 | 3.000  | 76.2  | 2.500  | 63.5  |
| 178136       | MH15        | 1 1/2        | 41   | 6.700  | 170.2 | 4.000  | 101.6 | 3.440  | 87.4  |
| 178137       | MH20        | 2            | 53   | 6.700  | 170.2 | 4.000  | 101.6 | 3.440  | 87.4  |

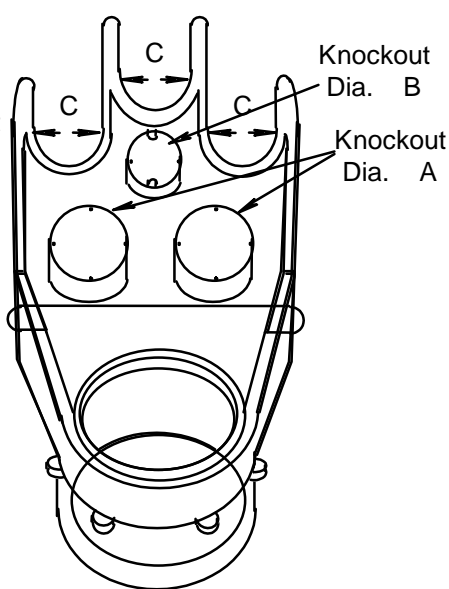
| PRODUCT CODE | PART NUMBER | NOMINAL SIZE |      | SHELL/ BODY CODE | FORK CODE | SOLVENT WELDED BUSHING/ N. COUPLING |           |
|--------------|-------------|--------------|------|------------------|-----------|-------------------------------------|-----------|
|              |             | (in)         | (mm) |                  |           | CODE                                | SIZE      |
| 078302       | MH05        | 1/2          | 16   | 077382           |           | 097554                              | 3/4X1/2"  |
| 078303       | MH07        | 3/4          | 21   |                  |           |                                     |           |
| 078304**     | MH10        | 1            | 27   |                  |           |                                     |           |
| 078305       | MH12        | 1 1/4        | 35   |                  |           |                                     |           |
| 078306       | MH15        | 1 1/2        | 41   | 077386           |           | 097557                              | 2X 1 1/2" |
| 078307       | MH20        | 2            | 53   |                  |           |                                     |           |
| 078308       | MH25        | 2 1/2        | 63   | 097252           | 097973    | 097558                              | 3X 1 1/2" |
| 078309       | MH30        | 3            | 78   | 097252           | 097973    |                                     |           |
| 078310**     | MH35        | 3 1/2        | 91   | 097252           | 097973    | 097976                              | 3 1/2X3"  |
| 078311       | MH40        | 4            | 103  | 097254           | 097975    |                                     |           |
| 178135       | MH12        | 1 1/4        | 35   |                  |           |                                     |           |
| 178136       | MH15        | 1 1/2        | 41   | 077386           |           | 097557                              | 2X 1 1/2" |
| 178137       | MH20        | 2            | 53   |                  |           |                                     |           |

\*\* CODES 077283 AND 077289 ARE NOT UL LISTED

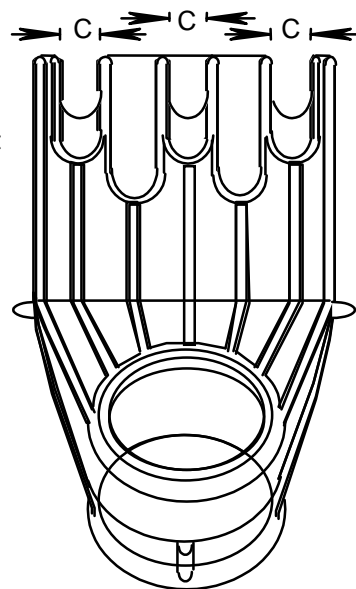
MAST HEADS



FORK FOR EF10 TO EF20



FORK FOR EF25 TO EF50



FORK FOR EF55

| PRODUCT CODE | PART NUMBER | NOMINAL SIZE |      | KNOCKOUTS |      |       |      | C     |      |
|--------------|-------------|--------------|------|-----------|------|-------|------|-------|------|
|              |             |              |      | A         |      | B     |      |       |      |
|              |             | (in)         | (mm) | (in)      | (mm) | (in)  | (mm) | (in)  | (mm) |
| 078302       | MH05        | 1/2          | 16   | 0.435     | 11.1 | 0.330 | 10.3 | -     | -    |
| 078303       | MH07        | 3/4          | 21   | 0.430     | 11.1 | 0.330 | 10.3 | -     | -    |
| 078304**     | MH10        | 1            | 27   | 0.560     | 14.2 | 1.000 | 25.4 | -     | -    |
| 078305       | MH12        | 1 1/4        | 35   | 0.750     | 19.1 | 0.500 | 12.7 | 0.750 | 19.1 |
| 078306       | MH15        | 1 1/2        | 41   | 0.810     | 20.6 | 0.500 | 12.7 | 0.875 | 22.2 |
| 078307       | MH20        | 2            | 53   | 0.810     | 20.6 | 0.500 | 12.7 | 0.875 | 22.2 |
| 078308       | MH25        | 2 1/2        | 63   | 1.250     | 31.8 | 1.250 | 31.8 | 1.750 | 44.5 |
| 078309       | MH30        | 3            | 78   | 1.250     | 31.8 | 1.250 | 31.8 | 1.750 | 44.5 |
| 078310**     | MH35        | 3 1/2        | 91   | 1.250     | 31.8 | 1.250 | 31.8 | 1.750 | 44.5 |
| 078311       | MH40        | 4            | 103  | 1.530     | 28.9 | 1.530 | 28.9 | 1.530 | 38.9 |
| 178135       | MH12        | 1 1/4        | 35   | 0.750     | 19.1 | 0.500 | 12.7 | 0.750 | 19.1 |
| 178136       | MH15        | 1 1/2        | 41   | 0.810     | 20.6 | 0.500 | 12.7 | 0.875 | 22.2 |
| 178137       | MH20        | 2            | 53   | 0.810     | 20.6 | 0.500 | 12.7 | 0.875 | 22.2 |

Filename: KRALOY-32.doc  
Directory: \\Bersrvbdc\bergen\QC MANUAL  
Template: C:\Documents and Settings\joelau\Application  
Data\Microsoft\Templates\Normal.dot  
Title: SOCKET DIMENSION  
Subject:  
Author: joe lau  
Keywords:  
Comments:  
Creation Date: 1/2/2001 12:50 PM  
Change Number: 7  
Last Saved On: 4/14/2004 3:49 PM  
Last Saved By: Joe Lau  
Total Editing Time: 9 Minutes  
Last Printed On: 8/8/2005 12:33 PM  
As of Last Complete Printing  
Number of Pages: 2  
Number of Words: 337 (approx.)  
Number of Characters: 1,927 (approx.)