

Pipe Straps

For Rigid Conduit & IMC

Type 14-S

Use: To support Rigid Conduit and IMC.

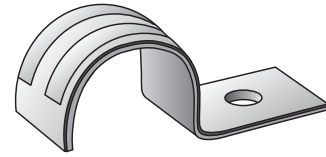
Features: Snap type - double ribbed

Material/Finish: Steel/Zinc Plated

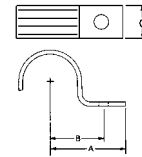
Applicable Third Party Standards:
Fed. Spec: FF-S-760

Note:
2½" through 4" sizes also suitable for EMT.

Trade Size (inches)	Steel Straps Catalog Number	Dimensions in Inches			Minimum Recommended Bolt Dia.
		A	B	C	
½	14-50S	2½	1¼	¾	¼
¾	14-75S	2¾	1½	¾	¼
1	14-100S	2¾	1½	¾	¼
1¼	14-125S	3½	1⅝	1	⅝
1½	14-150S	3⅝	1⅜	1⅝	⅜
2	14-200S	4¾	2⅝	1¼	⅜
2½	14-250S	6¾	2⅝	1¼	½
3	14-300S	6¾	3	1¼	½
3½	14-350S	7⅝	3⅝	1½	⅝
4	14-400S	8⅝	3⅝	1½	⅝



Type 14-S



Type THR

Use: To support Rigid Conduit and IMC.

Features: Snap type - double ribbed

Material/Finish: Steel/Zinc Plated

Third Party Certification:
CSA Certified: 104691
½" through 2" sizes only

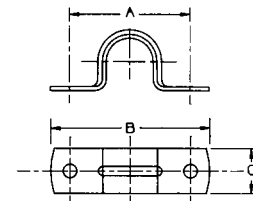
Applicable Third Party Standards:
CSA C22.2 No.18
Fed. Spec: FF-S-760

Note:
2½" through 4" sizes also suitable for EMT.

Trade Size (inches)	Steel Straps Catalog Number	Dimensions in Inches			Minimum Recommended Bolt Dia.
		A	B	C	
½	THR-50S	1¼	2¼	⅝	⅜
¾	THR-75S	1 ²⁷ / ₃₂	2 ⁵ / ₁₆	¾	⅜
1	THR-100S	2 ⁵ / ₁₆	2 ¹⁵ / ₁₆	2 ³ / ₃₂	¼
1¼	THR-125S	2 ¹⁵ / ₁₆	3⅝	2 ³ / ₃₂	¼
1½	THR-150S	3 ⁵ / ₃₂	3 ¹⁵ / ₁₆	2 ³ / ₃₂	¼
2	THR-200S	4¼	5	2 ³ / ₃₂	¼
2½	THR-250S	4 ¹¹ / ₁₆	5 ²³ / ₃₂	1	⅝
3	THR-300S	5 ¹¹ / ₁₆	6¾	1	⅝
3½	THR-350S	6 ⁵ / ₁₆	7 ⁵ / ₁₆	1	⅝
4	THR-400S	6 ²⁷ / ₃₂	7 ¹³ / ₁₆	1	⅝



Type THR



Type 14-G

Use:
To support Rigid Conduit and IMC.

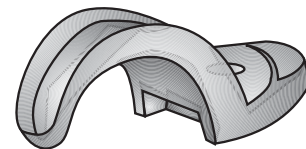
Material/Finish:
Malleable Iron/Hot Dipped Galvanized

Third Party Certification:
CSA Certified: 009795.

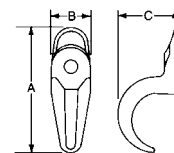
Applicable Third Party Standards:
CSA: C22.2 No.18
Fed. Spec: FF-S-760

Note:
2½" through 4" sizes also suitable for EMT.

Malleable Straps Catalog Number	Conduit Size Inches	Dimensions in Inches			Minimum Recommended Bolt Dia.
		A	B	C	
14-18G	⅝	1 ⁵ / ₁₆	½	½	#10
14-25G	¾	1 ¹⁹ / ₃₂	1 ⁹ / ₃₂	⅝	¼
14-38G	¾	1¼	⅝	¾	¼
14-50G	½	2¼	2 ¹ / ₃₂	1 ⁵ / ₁₆	¼
14-75G	¾	2 ⁹ / ₁₆	¾	1 ⁷ / ₃₂	¼
14-100G	1	3 ¹ / ₁₆	1 ¹ / ₁₆	1½	¼
14-125G	1¼	3 ¹ / ₁₆	⅞	1⅞	⅝
14-150G	1½	6¼	1	2⅝	⅝
14-200G	2	5 ¹ / ₁₆	1⅝	2 ¹ / ₁₆	½
14-250G	2½	5 ⁵ / ₁₆	1⅝	3 ¹ / ₁₆	½
14-300G	3	7 ¹ / ₁₆	1⅝	3 ¹ / ₁₆	½
14-350G	3½	8 ⁷ / ₁₆	1 ¹³ / ₁₆	4⅝	⅝
14-400G	4	8 ¹ / ₁₆	2	5	⅝
14-500G	5	10 ¹⁹ / ₁₆	2¾	6½	⅝
14-600G	6	12½	3⅝	7½	1



Type 14-G



Pipe Straps

For Rigid Conduit & IMC

Type 14-S

Use: To support Rigid Conduit and IMC.

Features: Snap type - double ribbed

Material/Finish: Steel/Zinc Plated

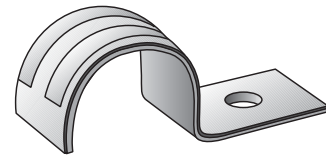
Applicable Third Party Standards:

Fed. Spec: FF-S-760

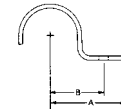
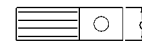
Note:

2½" through 4" sizes also suitable for EMT.

Trade Size (inches)	Steel Straps Catalog Number	Dimensions in Inches			Minimum Recommended Bolt Dia.
		A	B	C	
½	14-50S	2½	1¼	¾	¼
¾	14-75S	2¾	1½	¾	¼
1	14-100S	2¾	1½	¾	¼
1¼	14-125S	3½	1½	1	⅝
1½	14-150S	3½	1½	1	⅝
2	14-200S	4¾	2½	1¼	⅝
2½	14-250S	6¾	2¾	1¼	⅝
3	14-300S	6¾	3	1¼	⅝
3½	14-350S	7¾	3¾	1½	⅝
4	14-400S	8¾	3¾	1½	⅝



Type 14-S



Type THR

Use: To support Rigid Conduit and IMC.

Features: Snap type - double ribbed

Material/Finish: Steel/Zinc Plated

Third Party Certification:



CSA Certified: 104691

½" through 2" sizes only

Applicable Third Party Standards:

CSA C22.2 No.18

Fed. Spec: FF-S-760

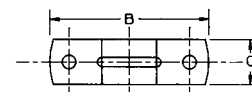
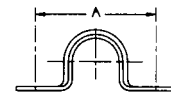
Note:

2½" through 4" sizes also suitable for EMT.

Trade Size (inches)	Steel Straps Catalog Number	Dimensions in Inches			Minimum Recommended Bolt Dia.
		A	B	C	
½	THR-50S	1¼	2¼	⅝	⅜
¾	THR-75S	1 ²⁷ / ₃₂	2 ⁵ / ₁₆	¾	⅜
1	THR-100S	2 ⁵ / ₁₆	2 ¹⁵ / ₁₆	2 ³ / ₃₂	¼
1¼	THR-125S	2 ¹⁵ / ₁₆	3 ³ / ₈	2 ³ / ₃₂	¼
1½	THR-150S	3 ⁵ / ₃₂	3 ¹⁵ / ₁₆	2 ³ / ₃₂	¼
2	THR-200S	4¼	5	2 ³ / ₃₂	¼
2½	THR-250S	4 ¹¹ / ₁₆	5 ²³ / ₃₂	1	⅝
3	THR-300S	5 ¹¹ / ₁₆	6¾	1	⅝
3½	THR-350S	6 ⁵ / ₁₆	7 ⁵ / ₁₆	1	⅝
4	THR-400S	6 ²⁷ / ₃₂	7 ¹³ / ₁₆	1	⅝



Type THR



Type 14-G

Use:

To support Rigid Conduit and IMC.

Material/Finish:

Malleable Iron/Hot Dipped Galvanized

Third Party Certification:



CSA Certified: 009795.

Applicable Third Party Standards:

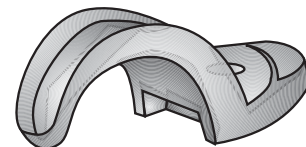
CSA: C22.2 No.18

Fed. Spec: FF-S-760

Note:

2½" through 4" sizes also suitable for EMT.

Malleable Straps Catalog Number	Conduit Size Inches	Dimensions in Inches			Minimum Recommended Bolt Dia.
		A	B	C	
14-18G	⅛	1 ¹⁵ / ₁₆	½	½	#10
14-25G	¼	1 ¹⁹ / ₃₂	1 ⁹ / ₃₂	⅝	¼
14-38G	⅜	1¼	⅝	¾	¼
14-50G	½	2¼	2 ¹ / ₃₂	1 ¹⁵ / ₁₆	¼
14-75G	¾	2 ⁹ / ₁₆	¾	1 ¹ / ₃₂	¼
14-100G	1	3 ¹ / ₁₆	1 ¹ / ₁₆	1½	¼
14-125G	1¼	3 ¹ / ₁₆	7 ¹ / ₈	1 ¹ / ₈	⅝
14-150G	1½	6¼	1	2½	⅝
14-200G	2	5 ¹ / ₁₆	1 ¹ / ₈	2 ¹ / ₁₆	½
14-250G	2½	5 ⁵ / ₁₆	1 ¹ / ₈	3 ¹ / ₁₆	½
14-300G	3	7 ¹ / ₁₆	1 ¹ / ₈	3 ¹ / ₁₆	½
14-350G	3½	8 ¹ / ₁₆	1 ¹ / ₁₆	4 ³ / ₈	⅝
14-400G	4	8 ¹ / ₁₆	2	5	⅝
14-500G	5	10 ¹⁹ / ₁₆	2¾	6½	⅝
14-600G	6	12½	3 ³ / ₈	7½	1



Type 14-G

