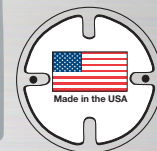
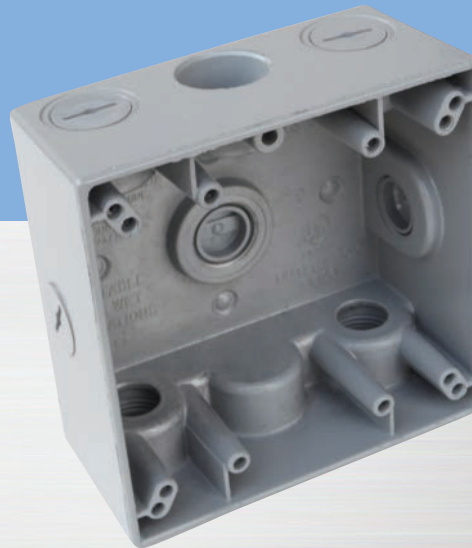


# 2-Gang Lug Boxes

*Suitable for wet locations*



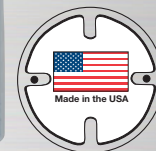
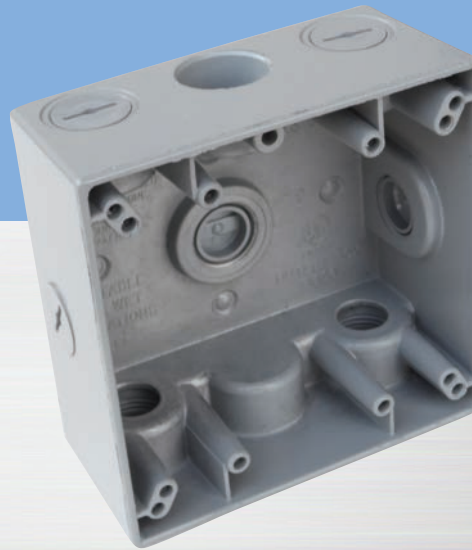
- All 2-gang boxes come with detachable lugs, 2 close-up plugs, and self-tapping ground screw.
- 4.5" x 4.5" x 2.0" deep.
- Heavy duty die-cast aluminum, .094" thick, with powder finish.
- For use in all indoor and outdoor damp or wet locations, with all standard FS, outlet, lampholder or splice box covers.
- UL Listed for the United States and Canada.
- NEMA 3R Rated.
- Comply with Federal Specification AA-50563
- All of the boxes on this page are made in the U.S.A.

Catalog No.	No. Outlets	Location	Hub Size	Color	Cubic Capacity	Carton Quantity	Weight per 100 units
 <b>30233</b>	3	1 in each end, 1 in back	1/2"	Gray	30.5"	10	110 lbs.
<b>30233W</b>	3	1 in each end, 1 in back	1/2"	White	30.5"	10	110 lbs.
<b>30233Z</b>	3	1 in each end, 1 in back	1/2"	Bronze	30.5"	10	110 lbs.
<b>30236</b>	3	1 in each end, 1 in back	3/4"	Gray	30.5"	10	110 lbs.
<b>30236W</b>	3	1 in each end, 1 in back	3/4"	White	30.5"	10	110 lbs.
<b>30236Z</b>	3	1 in each end, 1 in back	3/4"	Bronze	30.5"	10	110 lbs.
<b>30267</b>	3	1 in each end, 1 in back	1"	Gray	30.5"	10	110 lbs.
<b>30267W</b>	3	1 in each end, 1 in back	1"	White	30.5"	10	110 lbs.
<b>30267Z</b>	3	1 in each end, 1 in back	1"	Bronze	30.5"	10	110 lbs.
 <b>30239</b>	4	2 in one end, 1 in other end, 1 in back	1/2"	Gray	30.5"	10	110 lbs.
<b>30239W</b>	4	2 in one end, 1 in other end, 1 in back	1/2"	White	30.5"	10	110 lbs.
<b>30239Z</b>	4	2 in one end, 1 in other end, 1 in back	1/2"	Bronze	30.5"	10	110 lbs.
<b>30242</b>	4	2 in one end, 1 in other end, 1 in back	3/4"	Gray	30.5"	10	110 lbs.
 <b>30245</b>	5	2 in each end, 1 in back	1/2"	Gray	30.5"	10	110 lbs.
<b>30245W</b>	5	2 in each end, 1 in back	1/2"	White	30.5"	10	110 lbs.
<b>30245Z</b>	5	2 in each end, 1 in back	1/2"	Bronze	30.5"	10	110 lbs.
<b>30248</b>	5	2 in each end, 1 in back	3/4"	Gray	30.5"	10	110 lbs.
 <b>30251</b>	5	1 in each end, 1 in each side, 1 in back	1/2"	Gray	30.5"	10	110 lbs.
<b>30254</b>	5	1 in each end, 1 in each side, 1 in back	3/4"	Gray	30.5"	10	110 lbs.
<b>30270</b>	5	1 in each end, 1 in each side, 1 in back	1"	Gray	30.5"	10	110 lbs.
 <b>30257</b>	6	2 in one end, 1 in other end, 1 in each side, 1 in back	1/2"	Gray	30.5"	10	110 lbs.
<b>30260</b>	6	2 in one end, 1 in other end, 1 in each side, 1 in back	3/4"	Gray	30.5"	10	110 lbs.
 <b>30263</b>	7	2 in each end, 1 in each side, 1 in back	1/2"	Gray	30.5"	10	110 lbs.
<b>30266</b>	7	2 in each end, 1 in each side, 1 in back	3/4"	Gray	30.5"	10	110 lbs.
 <b>30269</b>	7	3 in each end, 1 in back	1/2"	Gray	30.5"	10	110 lbs.
<b>30272</b>	7	3 in each end, 1 in back	3/4"	Gray	30.5"	10	110 lbs.



# 2-Gang Lug Boxes

Suitable for wet locations



- All 2-gang boxes come with detachable lugs, 2 close-up plugs, and self-tapping ground screw.
- 4.5" x 4.5" x 2.0" deep.
- Heavy duty die-cast aluminum, .094" thick, with powder finish.
- For use in all indoor and outdoor damp or wet locations, with all standard FS, outlet, lampholder or splice box covers.
- UL Listed for the United States and Canada.
- NEMA 3R Rated.
- Comply with Federal Specification AA-50563
- All of the boxes on this page are made in the U.S.A.

Catalog No.	No. Outlets	Location	Hub Size	Color	Cubic Capacity	Carton Quantity	Weight per 100 units
 <b>30233</b>	3	1 in each end, 1 in back	1/2"	Gray	30.5"	10	110 lbs.
<b>30233W</b>	3	1 in each end, 1 in back	1/2"	White	30.5"	10	110 lbs.
<b>30233Z</b>	3	1 in each end, 1 in back	1/2"	Bronze	30.5"	10	110 lbs.
<b>30236</b>	3	1 in each end, 1 in back	3/4"	Gray	30.5"	10	110 lbs.
<b>30236W</b>	3	1 in each end, 1 in back	3/4"	White	30.5"	10	110 lbs.
<b>30236Z</b>	3	1 in each end, 1 in back	3/4"	Bronze	30.5"	10	110 lbs.
<b>30267</b>	3	1 in each end, 1 in back	1"	Gray	30.5"	10	110 lbs.
<b>30267W</b>	3	1 in each end, 1 in back	1"	White	30.5"	10	110 lbs.
<b>30267Z</b>	3	1 in each end, 1 in back	1"	Bronze	30.5"	10	110 lbs.
 <b>30239</b>	4	2 in one end, 1 in other end, 1 in back	1/2"	Gray	30.5"	10	110 lbs.
<b>30239W</b>	4	2 in one end, 1 in other end, 1 in back	1/2"	White	30.5"	10	110 lbs.
<b>30239Z</b>	4	2 in one end, 1 in other end, 1 in back	1/2"	Bronze	30.5"	10	110 lbs.
<b>30242</b>	4	2 in one end, 1 in other end, 1 in back	3/4"	Gray	30.5"	10	110 lbs.
 <b>30245</b>	5	2 in each end, 1 in back	1/2"	Gray	30.5"	10	110 lbs.
<b>30245W</b>	5	2 in each end, 1 in back	1/2"	White	30.5"	10	110 lbs.
<b>30245Z</b>	5	2 in each end, 1 in back	1/2"	Bronze	30.5"	10	110 lbs.
<b>30248</b>	5	2 in each end, 1 in back	3/4"	Gray	30.5"	10	110 lbs.
 <b>30251</b>	5	1 in each end, 1 in each side, 1 in back	1/2"	Gray	30.5"	10	110 lbs.
<b>30254</b>	5	1 in each end, 1 in each side, 1 in back	3/4"	Gray	30.5"	10	110 lbs.
<b>30270</b>	5	1 in each end, 1 in each side, 1 in back	1"	Gray	30.5"	10	110 lbs.
 <b>30257</b>	6	2 in one end, 1 in other end, 1 in each side, 1 in back	1/2"	Gray	30.5"	10	110 lbs.
<b>30260</b>	6	2 in one end, 1 in other end, 1 in each side, 1 in back	3/4"	Gray	30.5"	10	110 lbs.
 <b>30263</b>	7	2 in each end, 1 in each side, 1 in back	1/2"	Gray	30.5"	10	110 lbs.
<b>30266</b>	7	2 in each end, 1 in each side, 1 in back	3/4"	Gray	30.5"	10	110 lbs.
 <b>30269</b>	7	3 in each end, 1 in back	1/2"	Gray	30.5"	10	110 lbs.
<b>30272</b>	7	3 in each end, 1 in back	3/4"	Gray	30.5"	10	110 lbs.

