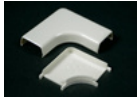




ELLIOTT ELECTRIC SUPPLY

We Deliver...Lower Cost, Quality Products, & Personal Service

2310 N. Stallings Dr.
75964-0000, TX Nacogdoches
Phone: 936-569-7941
Fax: 936-560-4685



411WH NM Flat 90 D. Elbow 400 WH *Wiremold/LeGrand*

| | |
|------------------|---|
| Catalog Number | 411WH |
| Manufacturer | Wiremold/LeGrand |
| Description | <P>For Right Angle Turns On Same Surface.</P> |
| Weight per unit | 0.0300 (lbs/each) |
| Product Category | Non-Metallic Raceway & Accy. |

Features

| | |
|---------|---------|
| Voltage | 600.0 V |
|---------|---------|

Descriptions

| | |
|------------------------|---|
| Description | NM FLAT 90 D. ELBOW 400 WH |
| extra long description | WM 411-WH NM FLAT 90 D. ELBOW 400 W |
| Long Description | <p>For right angle turns on same surface.</p> |
| Product Type | NM Flat 90 D. Elbow 400 White |
| Special Features | Accommodates communication and/or power wiring. Durable, textured PVC ivory or white finish. Single- and dual-compartment low profile design. Adhesive backing for low voltage (under 50V)applications. |

Manufacturer Information

| | |
|---------------------------|----------------|
| Brand | WIREMOLD |
| GTIN | 00786776523232 |
| Manufacturers Part Number | 411-WH |
| UPC | 786776523232 |

Taxonomies, Classifications, and Categories

| | |
|----------------------|---|
| Category Description | Panduit & Wiremold Metallic & Non-Metallic Raceways |
| Type | Raceway |

Packaging

| | |
|-----------------|------|
| Carton | 1 |
| Weight Per each | 0.03 |

Uses, Certifications, and Standards

| | |
|----------|--|
| standard | ROHS, CULUS, cULus Listed Raceway: File E90378 Guide RJTX. Complies with flammability requirements of UL-5A. Fittings: File E90377 Guide RJYT. Meets Article 388 of NEC. UL Listed for up to 600V. Meets Section 12-2600 of CEC. |
|----------|--|