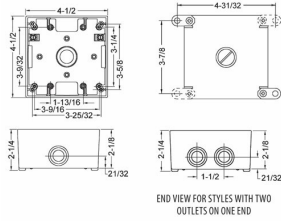




## TWO GANG BOXES - 2 IN. TO 2-5/8 IN. DEEP

2 in. Deep with Lugs - Five Threaded Outlets - 4-1/2 in. x 4-1/2 in.  
N/A

D06



Catalog #: 5337-1

### APPLICATIONS

For use in branch circuit wiring in wet, damp, or dry locations  
May be used as a weatherproof junction box, or as a housing for receptacles, switches, and GFCI's

### PRODUCT FEATURES

- Reinforced connector outlets
- State-of-the-art powder coat finish provides maximum weatherability and scratch resistance
- Eight box mounting options with detachable lugs
- Two closure plugs included
- Hubs accept all threaded fittings and threaded conduit
- Ground screw installed
- Multi-lingual instructions in each package
- Includes gasket and mounting hardware
- N/A

### UL LISTED

File E195978

### CSA

C22.2 No. 18

### NEMA

3R Rated

### GENERAL PRODUCT INFORMATION

Color: White

### CONFIGURATION

Number Of Outlets: 5  
Gangs: 2

### PRODUCT MEASUREMENTS

Depth: 2 in.  
Outlet Size: 1/2 in.  
Cubic Inches (cm<sup>3</sup>): 31.0 (508.0)  
Wt. Ea. (Lbs.): 1.053

### PACKAGING

Package Type: Shrink  
Std. Pkg.: 12  
Product UPC-A Labeled: Yes  
Weight (Lbs. Per/C): 105.30  
Ship Carton Length (in.): 16.19  
Ship Carton Width (in.): 6.50  
Ship Carton Height (in.): 8.50  
Ctn Weight (Lbs.): 12.64  
Pallet Qty: 1080.00  
UPC Number: 050169533710  
I2of5: 50050169533715