

FISH TAPES, ACCESSORIES & CONDUIT TOOLS

Innovative, high quality solutions for wire pulling and conduit bending



PULL



FISH



BEND

For Professionals... Since 1857®

**KLEIN
TOOLS®**

INTRODUCING

Laser-Etched Fiberglass Fish Tapes



NON-CONDUCTIVE



PERMANENT 1' MARKINGS

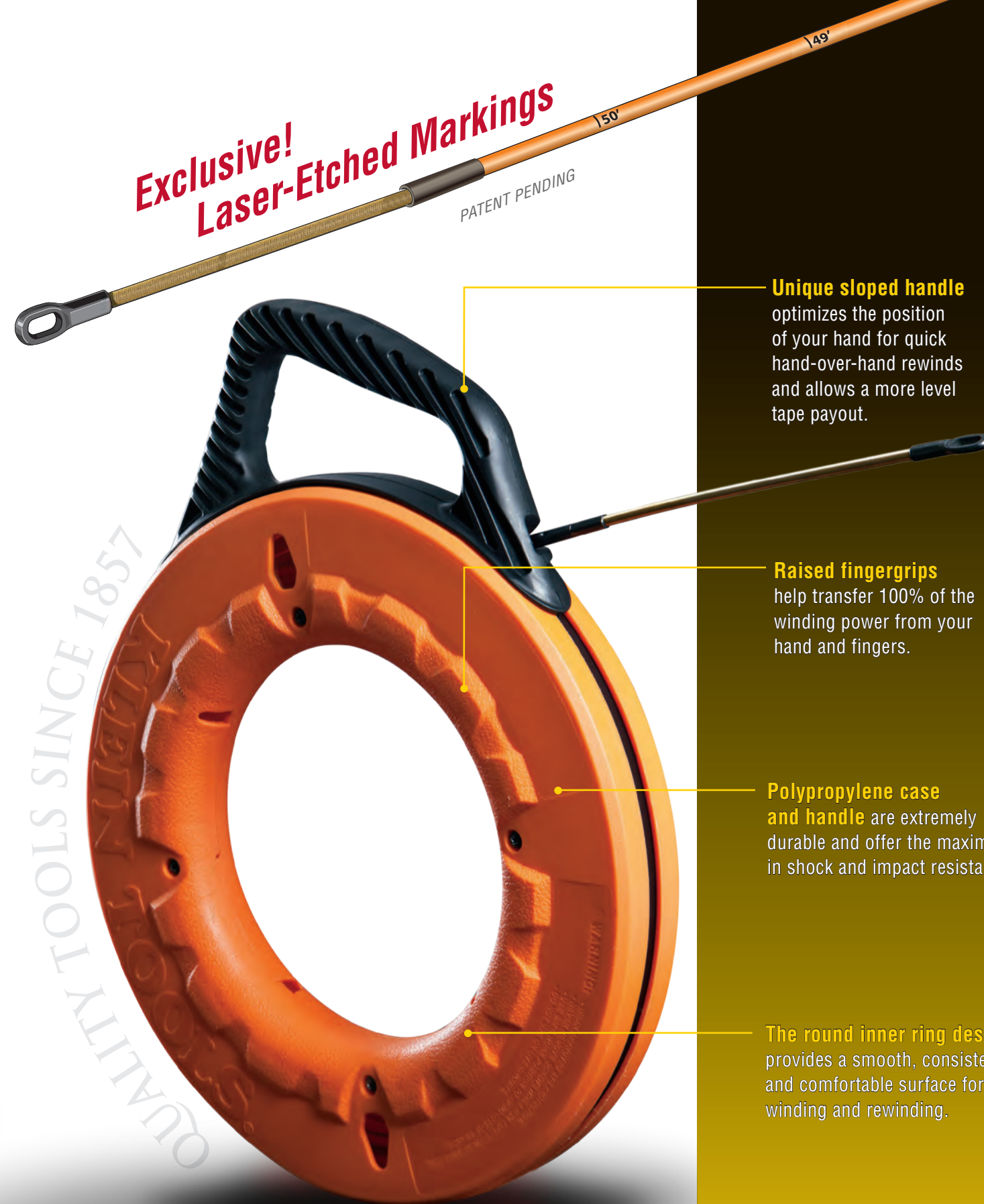


DURABLE LEADER

The Advantages of Laser-Etched Markings

- Laser-etched in 1' increments allowing you to more accurately measure the depth of conduit runs.
- Descending markings let you know right away how much tape is left to pay out.
- Laser-etched markings are permanent. They won't rub or scratch off.

Laser-etched markings are also available on Klein® Steel Fish Tapes.



Exclusive! Laser-Etched Markings

PATENT PENDING

Unique sloped handle optimizes the position of your hand for quick hand-over-hand rewinds and allows a more level tape payout.

Raised fingergrrips help transfer 100% of the winding power from your hand and fingers.

Polypropylene case and handle are extremely durable and offer the maximum in shock and impact resistance.

The round inner ring design provides a smooth, consistent and comfortable surface for winding and rewinding.

QUALITY TOOLS SINCE 1857

KLEIN TOOLS®

Fish Tapes



High Strength 1/8" Wide Steel Fish Tapes

Additional Features:

- Permanent, laser etched 1' increments on the tape allow you to more accurately measure the depth of conduit runs and determine the amount of tape left to pay out.
- Full grip style handle gives you a firm, steady grip as you pull tape from the case (Cat. Nos. 56000, 56001).
- The 13" case diameter means you can reel in 15% more tape in a single revolution than similar sized 12" tapes saving you time and effort (Cat. Nos. 56003, 56004).



Cat. No.	Tape Size	Reel Diameter	Weight (lbs.)
56000	25' L x 1/8" W x .045" H (7 m L x 3 mm W x 1.1 mm H)	7" (178 mm)	1.0
56001	50' L x 1/8" W x .045" H (15 m L x 3 mm W x 1.1 mm H)	7" (178 mm)	1.3
56002	65' L x 1/8" W x .062" H (19 m L x 3 mm W x 1.5 mm H)	9" (229 mm)	2.6
56003	125' L x 1/8" W x .062" H (38 m L x 3 mm W x 1.5 mm H)	13" (330 mm)	4.7
56004	240' L x 1/8" W x .062" H (73 m L x 3 mm W x 1.5 mm H)	13" (330 mm)	7.5

Replacement Tapes

56065	65' L x 1/8" W x .062" H (19 m L x 3 mm W x 1.5 mm H)	-	1.7 NEW!
56125	125' L x 1/8" W x .062" H (38 m L x 3 mm W x 1.5 mm H)	-	3.3 NEW!
56240	240' L x 1/8" W x .062" H (73 m L x 3 mm W x 1.5 mm H)	-	6.1 NEW!



- Replacement tapes available in 65', 125', & 240' lengths (Cat. Nos. 56065, 56125, 56240).

All dimensions are in inches and (millimeters) unless otherwise specified.

WARNING: Wear approved eye protection when feeding, pulling or rewinding fish tape.

WARNING: Never remove screws while fish tape is coiled inside reel.

WARNING: Do NOT use any fish tape on or near live circuits. Use extreme caution when working near any electrical equipment.

WARNING: Use a safe work position to avoid loss of balance when using fish tape.

Fish Tapes

High Strength 1/4" Wide Steel Fish Tapes

Additional Features:

- Permanent, laser etched 1' increments on the tape allow you to more accurately measure the depth of conduit runs and determine the amount of tape left to pay out.
- Tempered, high quality tape keeps its stability as it glides between surfaces for effective pushing and pulling of wire under carpets, through insulated walls and over suspended ceilings.
- 25' length is perfect for short wire runs associated with light commercial, residential and voice-data-video-audio installations (Cat. No. 56005).



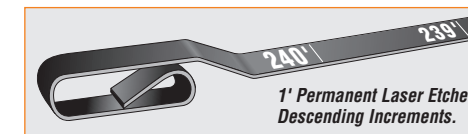
56005 Has a No Snag Plastic Tip

Cat. No.	Tape Size	Reel Diameter	Weight (lbs.)
56005	25' L x 1/4" W x .030" H (7 m L x 6.3 mm W x .7 mm H)	7" (178 mm)	1.1
56006	100' L x 1/4" W x .062" H (30 m L x 6.3 mm W x 1.5 mm H)	13" (330 mm)	6.8

High Strength 1/8" Stainless Steel Fish Tapes

Additional Features:

- Permanent, laser etched 1' increments on the tape allow you to more accurately measure the depth of conduit runs and determine the amount of tape left to pay out.
- Stainless Steel fish tape is corrosion resistant and extends the life of the tool.
- High strength spring steel fish tapes are stiff for long runs and are great for heavy duty wire pulls.



Cat. No.	Tape Size	Reel Diameter	Weight (lbs.)
56007	125' L x 1/8" W x .062" H (38 m L x 3 mm W x 1.5 mm H)	13" (330 mm)	4.7
56008	240' L x 1/8" W x .062" H (73 m L x 3 mm W x 1.5 mm H)	13" (330 mm)	7.5

Fiberglass Fish Tapes

Additional Features:

- Permanent, laser etched 1' increments on the tape allow you to more accurately measure the depth of conduit runs and determine the amount of tape left to pay out.
- Designed for flexibility and easy navigation through conduit runs.
- Non conductive, fiberglass fish tape slides easily over existing wires and through multiple bends.
- The lightweight and strong fiberglass composite tape resists harsh elements and is strength rated up to 500 pulling pounds.
- The 13" case diameter means you can reel in 15% more tape in a single revolution vs. a standard 12" case (except Cat. No. 56014).
- Durable 7" leader helps push through crowded conduit.



Cat. No.	Tape Size	Reel Diameter	Weight (lbs.)
56009	50' L x 3/16" W (7" leader) (15 m L x 4.8 mm W)	13" (330 mm)	2.8
56010	100' L x 3/16" W (7" leader) (30 m L x 4.8 mm W)	13" (330 mm)	3.5
56014	200' L x 3/16" W (7" leader) (60 m L x 4.8 mm W)	17" (432 mm)	6.2 NEW!



All dimensions are in inches and (millimeters) unless otherwise specified.

WARNING: Wear approved eye protection when feeding, pulling or rewinding fish tape.

WARNING: Never remove screws while fish tape is coiled inside reel.

WARNING: Do NOT use any fish tape on or near live circuits. Use extreme caution when working near any electrical equipment.

WARNING: Use a safe work position to avoid loss of balance when using fish tape.

Fish Tapes

Nylon Fish Tapes

Additional Features:

- Designed for flexibility and easy navigation through conduit runs.
- Non conductive, nylon fish tape slides easily over existing wires and through multiple bends.
- The lightweight and strong nylon composite tape resists harsh elements and is strength rated up to 200 pulling pounds.
- The 13" case diameter means you can reel in 15% more tape in a single revolution vs. a standard 12" case.



56012

Cat. No.	Tape Size	Reel Diameter	Weight (lbs.)
56011	50' L x 3/16" W (15 m L x 4.8 mm W)	13" (330 mm)	2.3
56012	100' L x 3/16" W (30 m L x 4.8 mm W)	13" (330 mm)	3.0

Spiral Steel Fish Tapes

Additional Features:

- Designed for super flexibility and easy navigation through conduit runs.
- Spiral Steel fish tape slides easily over existing wires and through multiple bends.
- The durable spiral steel tape construction yields a maximum pulling force of up to 500 lbs.
- The 13" case diameter means you can reel in 15% more tape in a single revolution vs. a standard 12" case.



56013

Cat. No.	Tape Size	Reel Diameter	Weight (lbs.)
56013	50' L x 3/16" W (15 m L x 4.8 mm W)	13" (330 mm)	5.1

Fish Tape Accessories

Poly Pull Line

- Use polypropylene line with manual or power fishing systems for light duty cable or rope pulling applications.
- Ready to use storage containers quickly dispense a tangle free line and also protects line from direct sunlight.
- Line is resistant to rot and mildew.
- Up to 210 lbs. average breaking strength.



56108



56110

Cat. No.	Description	Container Type	Weight (lbs.)
56108	500' (152 m) poly pull line with orange tracer	one-quart size w/locking lid	1
56110	6500' (1981 m) poly pull line with orange tracer	five-gallon bucket	11

All dimensions are in inches and (millimeters) unless otherwise specified.

▲WARNING: Wear approved eye protection when feeding, pulling or rewinding fish tape.

▲WARNING: Never remove screws while fish tape is coiled inside reel.

▲WARNING: Do NOT use any fish tape on or near live circuits. Use extreme caution when working near any electrical equipment.

▲WARNING: Use a safe work position to avoid loss of balance when using fish tape.

Fish Tape Accessories

Steel Fish Tape Puller

- Exclusive design improves your grip while pulling all types of flat steel fish tape.
- Rugged metal construction is comfortable in your hand and provides excellent leverage.
- Internal resistance mechanism securely locks fish tape in place for pulling.
- Compatible with 1/8" & 1/4" tape widths and thicknesses of .045", .062" and .030".
- Compact size – fits easily in your pocket or a tool pouch.



50355

Cat. No.	Length	Weight (lbs.)
50355	3-1/4" (83 mm)	.33

Composite Fish Tape Puller

- Exclusive design improves your grip while pulling round-diameter, composite fish tapes.
- Flexible rubberized construction is comfortable in your hand and provides excellent leverage.
- Interlocking teeth molded into channel wrap completely around the tape when squeezed.
- Fits conveniently into center of 13" fish tape case for easy storage.
- Compatible with Nylon, Fiberglass and Spiral Steel tapes.



56106

Cat. No.	Length	Weight (lbs.)
56106	7-3/4" (196 mm)	.6

Steel Fish Tape Swivel Eyelet

- For use with 1/8" wide steel fish tapes.
- Swivel head design helps prevent kinks and allows smoother, easier fishing in tight turns.
- High capacity eyelet holds up to five #12 unstripped wires or seven #10 bare wires.
- High strength steel construction allows for optimal performance over repeated uses.
- Retrofit instructions included.



50351

Cat. No.	Length	Diameter	Weight (lbs.)
50351	1-1/2" (38 mm)	3/16" (5 mm)	.03

13.5" Flexible Leader for Steel Fish Tapes

- The 3/16" diameter tape has a rustproof inner steel cable core wrapped with a spiral cover for exceptional flexibility.
- Flexible leader guides steel tapes through 90° bends and makes pulling and pushing flat steel tapes easier.



- For use with 1/8" wide steel fish tapes.
- Heavy duty construction is strength rated up to 500 pulling pounds.
- High capacity eyelet holds up to five #12 unstripped wires and seven #10 bare wires.
- Retrofit instructions included.

Cat. No.	Length	Diameter	Weight (lbs.)
50350	13-1/2" (343 mm)	3/16" (5 mm)	.10

50350

6 Loop Wire Pulling Leader

- Save time by attaching leader to the end of a fish tape and pull up to 6 wires at once.
- Braided steel construction provides up to 450 lbs. pull strength on main eyelet.
- Flexible construction allows for easy navigation through multiple bends in conduit.
- Staggered loop lengths won't overlap and clog pipe.
- For use with 1/8" and 1/4" flat steel fish tapes.



56107

Cat. No.	Length	Weight (lbs.)
56107	11-1/4" (285 mm)	.2

All dimensions are in inches and (millimeters) unless otherwise specified.

▲WARNING: Wear approved eye protection when feeding, pulling or rewinding fish tape.

▲WARNING: Never remove screws while fish tape is coiled inside reel.

▲WARNING: Do NOT use any fish tape on or near live circuits. Use extreme caution when working near any electrical equipment.

▲WARNING: Use a safe work position to avoid loss of balance when using fish tape.

Fish Tape Accessories

Fiberglass Fish Tape Repair Kit

- Contains high leverage ratcheting crimper, two replacement eyelets, two 7" replacement leaders, one tube of quick dry glue and comprehensive instructions.
- Multi-function ratcheting crimper (Cat. No. 56115V) cuts tape cleanly, strips tapes and crimps on new attachments.
- Newly crimped on eyelets meet or exceed original factory pulling strength requirements.
- Protective carry case firmly holds all tools and additional parts in handy, organized compartments.



Cat. No.	Set Contains	Weight (lbs.)
56115	High Leverage Crimper (1 ea.), 7" flexible leader (2 ea.), Eyelets (2 ea.), Tube quick-drying Glue (1 ea)	2.18

56115

6-Pack Replacement Eyelets & 2-Pack 7" Replacement Flexible Leaders

- For use only with fiberglass fish tapes (Cat. No. 56009, 56010 & 56014).
- Not compatible with nylon fish tapes (Cat. No. 56011 & 56012).
- Attach with Klein Tools ratcheting crimper (Cat. No. 56115V) available in kit 56115 only.



56116

Cat. No.	Length	Weight (lbs.)
56116	1.5" (38 mm)	.06
56120	8.94" (227 mm)	.11



56120

Fish Rods

Extension Pole - WireSpanner™



56105

- Push/Pull wires over long spans of suspended ceilings, sub-floors, crawl spaces and attics.
- The durable 54" pole quickly and easily telescopes to a maximum of 22' long.
- Each section locks securely into place and will not spin loose or collapse.
- High quality, rigid fiberglass is sturdy, lightweight and slides easily over obstructions.
- Large capacity hook/skid tip pulls multiple wires easily and has a separate eyelet for wire tie-on.

Cat. No.	Description	Collapsed Length	Extended Length	Max. Diameter	Weight (lbs.)
56105	WireSpanner™ installation tool	54" (1.3 m)	22' (6.7 m)	2" (50 mm)	4
56118	WireSpanner™ carry case	-	-	-	0.4

All dimensions are in inches and (millimeters) unless otherwise specified.

▲WARNING: Wear approved eye protection when feeding, pulling or rewinding fish tape.

▲WARNING: Never remove screws while fish tape is coiled inside reel.

▲WARNING: Do NOT use any fish tape on or near live circuits. Use extreme caution when working near any electrical equipment.

▲WARNING: Use a safe work position to avoid loss of balance when using fish tape.

Fish Rods

Fish Rods



56100

- Use to install wires above ceilings, through walls and under carpets and raised floors.
- 1/4" diameter Fish Rods are flexible, yet provide excellent rigidity for extended distance stand out.
- Connect individual sections end-to-end to create a variety of lengths.
- Threaded connectors are beveled on both ends to prevent snagging and hang ups on obstructions.
- Sets contain (1ea.) steel "bullnose" and (1ea.) "J" hook accessory for attaching wires.
- Cat. No. 56103 also includes one 3/16" x 5' Glow Rod section to help guide Fish Rods into dark spaces.

Cat. No.	Description	Set Contains	Material	Max. Diameter	Weight (lbs.)
56100	12' (3.6 m) fish rod set	(3 ea.) 1/4" x 4' (6.3 mm x 1.2 m) fish rods (1 ea.) bull nose attachment (1 ea.) hook attachment	fiberglass	1/4" (6 mm)	1.2
56101	24' (7.3 m) fish rod set	(4 ea.) 1/4" x 6' (6.3 mm x 1.8 m) fish rods (1 ea.) bull nose attachment (1 ea.) hook attachment	fiberglass	1/4" (6 mm)	2.2
56103	25' (7.6 m) fish and glow rod set	(5 ea.) 1/4" x 4' (6.3 mm x 1.2 m) fish rods (1 ea.) 3/16" x 5' (4.8 mm x 1.5 m) glow rod (1 ea.) bull nose attachment (1 ea.) hook attachment	fiberglass and luminescent rods	1/4" (6 mm)	2.7
56111	4' (1.2 m) fish rod	-	fiberglass	1/4" (6 mm)	.2
56112	6' (1.8 m) fish rod	-	fiberglass	1/4" (6 mm)	.2

Glow Rods



56518

- Use to install wires above ceilings, through walls and under carpets and raised floors.
- Luminescent rods glow in the dark and are rechargeable in most available light sources.
- 3/16" and 5/32" diameter Glow Rods are extremely flexible to navigate tight bends and narrow openings.
- Connect individual sections end-to-end to create a variety of lengths.
- Threaded connectors are beveled on both ends to prevent snagging and hang ups on obstructions.
- Cat. No. 56109 features 2 permanently affixed bull nose tips and offers the ultimate in flexibility.

Cat. No.	Description	Set Contains	Material	Max. Diameter	Weight (lbs.)
56102	15' (4.5 m) glow rod set	(3 ea.) 3/16" x 5' (4.8 mm x 1.5 m) glow rods (1 ea.) bull nose attachment (1 ea.) hook attachment	luminescent fiberglass	3/16" (5 mm)	1.0
56508	9' (2.7 m) glow rod set	(6 ea.) 3/16" x 18" (4.8 mm x .5 m) glow rods (1 ea.) bull nose attachment (1 ea.) hook attachment	luminescent fiberglass	3/16" (5 mm)	.6 NEW!
56109	6' (1.8 m) glow rod	-	luminescent fiberglass	5/32" (3 mm)	.09
56114	5' (1.5 m) glow rod	-	luminescent fiberglass	3/16" (5 mm)	.2
56518	18' (5.5 m) glow rod set	(3 ea.) 5/32" x 6' (3 mm x 1.8 m) glow rods (1 ea.) bull nose attachment (1 ea.) hook attachment	luminescent fiberglass	5/32" (3 mm)	.9 NEW!

3-Piece Fish and Glow Rod Attachment Set

- Whisk attachment helps guide rods over obstructions and can roll side-to-side to help "steer" left or right.
- Hook attachment helps grab and retrieve wires or other objects from a distance.
- Compatible with 1/4", 3/16", and 5/32" rod sizes.



56104

Cat. No.	Set Contains	Weight (lbs.)
56104	(1 ea.) whisk attachment (1 ea.) bull nose attachment (1 ea.) hook attachment	.1

All dimensions are in inches and (millimeters) unless otherwise specified.

▲WARNING: Wear approved eye protection when feeding, pulling or rewinding fish tape.

▲WARNING: Never remove screws while fish tape is coiled inside reel.

▲WARNING: Do NOT use any fish tape on or near live circuits. Use extreme caution when working near any electrical equipment.

▲WARNING: Use a safe work position to avoid loss of balance when using fish tape.

Wire and Cable Pulling Lubricant



One-Quart Premium Synthetic Clear Lubricant

- Klein's Premium Synthetic Clear Lubricant is designed for use primarily in finished workspaces (i.e. around painted walls and carpeted floors).
- The crystal clear formulation is easy to clean-up and will not stain.
- Excellent all purpose lubricant for electrical or datacom applications.
- Compatible with most types of cable jackets.
- Temperature stable - will not separate out in hot environments or when exposed to freezing.



51028

Cat. No.	Container	Temperature Use Range	Weight
51028	one-quart squeeze bottle	20° F to 120° F (-5° C to 50° C)	2.3

Premium Synthetic Wax[®]

- Klein's Premium Synthetic Wax Pulling Lubricant is temperature stable and does not liquify and drop off after high temperature exposure.
- Compatible with most types of cable, including low density polyethylene.
- Superior "clingability" coats wires and conduit evenly. Exceptional lubricity.
- Non-staining, slow-drying, easy clean-up formula.



51010

51012

Cat. No.	Container	Temperature Use Range	Weight (lbs.)
51010	one-quart squeeze bottle	20° F to 122° F (-6° C to 50° C)	2.25
51012	one-gallon pail	20° F to 122° F (-6° C to 50° C)	8.75
51013	five-gallon pail	20° F to 122° F (-6° C to 50° C)	44
56117	one-quart squeeze bottle - 6 pack	20° F to 122° F (-6° C to 50° C)	13.5

Premium Synthetic Polymer[®]

CERTIFIED TO CSA STANDARD C22.2 NO. 249-96



51015

51017

Cat. No.	Container	Temperature Use Range	Weight (lbs.)
51015	one-quart squeeze bottle	20° F to 140° F (-6° C to 60° C)	2.33
51017	one-gallon pail	20° F to 140° F (-6° C to 60° C)	8.75
51018	five-gallon pail	20° F to 140° F (-6° C to 60° C)	44

⚠WARNING: Do not use wet product on live circuits. Compound is electrically conductive before it dries.

Gloves

Electrician's Gloves

- Durable construction allows flexibility.
- Features slip resistant construction.
- Spandex material is breathable and comfortable to wear all day.
- Constructed with a reinforced area at the base of the thumb.
- Elastic cuff for secure and comfortable fit.
- Index fingers are wrapped with slip-resistant material.
- Extended cuff for easy on/off.



40072

Conduit Tools

Side-Cutting Pliers – Fish-Tape Pulling

- Quickly and easily pulls 1/8" or 1/4" flat-steel fish tape without damaging the tape.
- High leverage design. Rivet is closer to the cutting edge for 46% greater cutting and gripping power than other plier designs.
- Streamlined design with sure-gripping, cross-hatched knurled jaws.



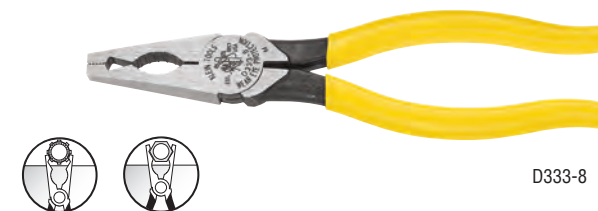
J2000-9NECRTP

Cat. No.	Nose Type	Overall Length	Jaw Length	Jaw Width	Jaw Thickness	Knife Length	Handle Finish	Handle Color	Weight (lbs.)
D213-9NETP	New England	9-3/8" (238 mm)	1-19/32" (41 mm)	1-1/14" (32 mm)	5/8" (16 mm)	25/32" (20 mm)	plastic-dipped	dark blue	1.06
Journeyman Series – Dual-material handles									
J213-9NETP	New England	9-1/2" (241 mm)	1-19/32" (41 mm)	1-1/14" (32 mm)	5/8" (16 mm)	25/32" (20 mm)	Journeyman	dark blue/black	1.11
2000 Series* – Heavy-duty cutting knives									
D2000-9NETP	New England	9-3/8" (238 mm)	1-19/32" (41 mm)	1-1/14" (32 mm)	5/8" (16 mm)	25/32" (20 mm)	plastic-dipped	royal blue	1.09
Journeyman 2000 Series* – Dual-material handles									
J2000-9NETP	New England	9-1/2" (241 mm)	1-19/32" (41 mm)	1-1/14" (32 mm)	5/8" (16 mm)	25/32" (20 mm)	Journeyman	light blue/black	1.14
J2000-9NECRTP	New England	9-1/2" (241 mm)	1-19/32" (41 mm)	1-1/14" (32 mm)	5/8" (16 mm)	25/32" (20 mm)	Journeyman	blue/black	1.13

*Cuts ACSR, screws, nails, and most hardened wire. Features combination polished and black-oxide finish.

Conduit Pliers – Locknut and Reaming

- Tightens 1/2" (13 mm) and 3/4" (19 mm) EMT or 1/2" (13 mm) rigid locknuts.
- Fits liquid tight fittings and caps.
- Reams and smooths both inside and outside of conduit.
- Knurled jaws at nose tip pull wire or fish tape.
- Machined nose fits snugly into locknut wings.



D333-8

Cat. No.	Overall Length	Jaw Length	Jaw Width	Jaw Thickness	Point Thickness	Handle Finish	Handle Color	Weight (lbs.)
D333-8	7-3/4" (197 mm)	1-5/8" (41 mm)	15/16" (24 mm)	1/2" (13 mm)	3/16" (4.8 mm)	plastic-dipped	yellow	.55

Conduit-Fitting and Reaming Screwdriver

- Hooded-blade design keeps tip from slipping out of screws, especially when tightening hard-to-reach conduit fittings. Thicker hood is designed for rugged use.
- Reams and smooths 1/2" (13 mm), 3/4" (19 mm), and 1" (25 mm) thin-wall conduit ends to protect wire and permit correct installation of fittings.



85191

Cat. No.	Shank Tip Width	Shank Length	Overall Length	Weight (lbs.)
85191	3/8" (10 mm)	2-1/2" (64 mm)	7-1/2" (191 mm)	.55
19353	conduit reamer replacement blade kit			.01

- Reams both the inside and outside of the conduit at the same time.
- Longer Cushion-Grip handle provides comfort and more torque for reaming.

All dimensions are in inches and (millimeters) unless otherwise specified.

⚠WARNING: Always wear approved eye protection.

⚠WARNING: NOT insulated. Plastic-dipped or slip-on plastic handles are NOT intended for protection against electrical shock.

INTRODUCING Iron Conduit Benders

Klein Tools now offers a full line of iron conduit benders designed with the electricians' feedback in mind; the ultimate in performance and durability you've come to expect from the #1 choice among professional electricians.



The Features of Iron Conduit Benders

- Exclusive design reduces rippling and ovaling of conduit.
- Bold cast-in symbols, degree scales, multiplier scales and center of bend marks help save time on the job.



- The traditional Benfield® head design accurately and consistently performs common bends such as Stub Ups, Offsets, Back-to-Back and Saddle Bends.



Interior hook surface prevents conduit from rolling or twisting during bends.

Interior clamp securely holds conduit while cutting with hacksaw.

Wide foot pedal provides excellent stability, leverage and comfort. Features angled grooves for extra traction.

Easily visible arrow for ease of alignment on conduit marks.



Klein's advanced casting process precisely controls metal flow for the ultimate in core strength and ductility.

QUALITY TOOLS SINCE 1857

56295
KLEIN TOOLS
Conduit Bender
Corrador de conducto
Outil de cintrage pour conduites
Accurately Bend Conduit for Quick and Easy Installation.
Curve con precisión conduites para permitir una instalación rápida y fácil.
Cintra les conduites avec une grande précision pour permettre une installation rapide et facile.

1" EMT
3/4" RIGID
3/4" IMC

Made in the USA
Fabricado en los E.U.A.
Fabricado en Etats-Unis

6"	8-1/2"	45°	2-1/4"
7"	9-3/4"	45°	2-5/8"
8"	11-1/2"	45°	3"
9"	12-1/2"	45°	3-3/8"
10"	14"	45°	3-3/4"

Aplica de
los bendedores
de tubo de
conduite
El producto
se fabrica
en el comercio

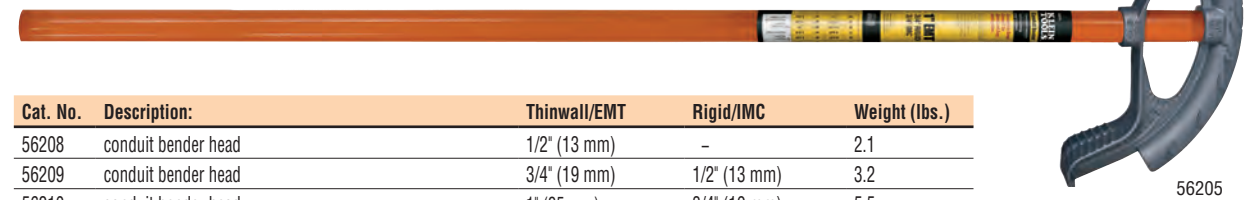


Conduit Benders

Iron Conduit Benders

Additional Features:

- High strength steel handle features a swaged end for inserting conduit to correct overbends (Cat. Nos. 56203 & 56204 only).
- Bright orange color handle is easy to spot on the jobsite.



Cat. No.	Description:	Thinwall/EMT	Rigid/IMC	Weight (lbs.)
56208	conduit bender head	1/2" (13 mm)	-	2.1
56209	conduit bender head	3/4" (19 mm)	1/2" (13 mm)	3.2
56210	conduit bender head	1" (25 mm)	3/4" (19 mm)	5.5
56211	conduit bender head	1 1/4" (32 mm)	1" (25 mm)	16.6 NEW!
56203	assembled conduit bender w/#51427 handle	1/2" (13 mm)	-	5.5
56204	assembled conduit bender w/#51427 handle	3/4" (19 mm)	1/2" (13 mm)	6.6
56205	assembled conduit bender w/#51428 handle	1" (25 mm)	3/4" (19 mm)	11.6



Aluminum Conduit Benders

- Lightweight die-cast aluminum construction.
- The traditional Benfield® head design accurately and consistently performs common bends such as Stub Ups, Offsets, Back-to-Back and Saddle Bends.
- Bold cast-in benchmark symbols, degree scales and multiplier scales help save time on the job.
- Textured interior hook surface prevents conduit from rolling or twisting during bends.
- Wide foot pedal provides excellent stability and features angled grooves for extra traction.

Cat. No.	Description:	Thinwall/EMT	Rigid/IMC	Radius	Weight (lbs.)
56206	assembled aluminum conduit bender with #51427 handle	1/2" (13 mm)	-	4"	4.4
56207	assembled aluminum conduit bender with #51427 handle	3/4" (19 mm)	1/2" (13 mm)	5"	5.4



56206

Conduit Bender Handles

Bender Handles



51427

- Available in multiple sizes and lengths and are compatible with all Klein Tools conduit bender heads.
- High-strength steel eliminates flex and provides excellent feel, control and leverage.
- Handle features an enlarged diameter hollow end for inserting conduit to correct overbends (Cat. No. 51427).
- Bright orange color is easy to spot on the jobsite.

Cat. No.	Description:	Weight (lbs.)
51427	conduit bender handle - 38" L, 3/4" NPT tap size fits 1/2" and 3/4" bender heads and is replacement handle for #56206 and #56207.	3.5
51428	conduit bender handle - 44" L, 1" NPT tap size fits 1" bender head.	6.0
51429	conduit bender handle - 54" L, 1-1/4" NPT tap size fits 1-1/4" bender head.	8.9

All dimensions are in inches and (millimeters) unless otherwise specified.

WARNING: Always wear approved eye protection.

Armored Cable Cutter

BX and Armored Cable Cutter

- Cuts BX and 3/8" armored cable.
- Eliminates burrs.
- Does not nick cable.
- Easily cuts 3/8" flexible conduit and #10, 12, and 14 armored cables with up to 4 wires with a couple of turns of the handle.
- Depth of cut adjusts between standard MC and reduced diameter MC.
- Extra blade storage in handle.
- Use with Klein Tools replacement blade Cat. No. 53726 or 53726-SEN.

Cat. No.	Length	Weight (lbs.)
53725	7-1/4" (184 mm)	2.00

Replacement Parts

53726	BX cutter replacement blade	0.1
-------	-----------------------------	-----



53725

Conduit Scoring Tool

Electrician's Conduit Scoring Tool

- Durable zinc cast scoring tool eliminates spiraling
- Used for scoring 1/2", 3/4" and 1" EMT conduit.
- Klein-designed, patented scoring wheel scores and allows clean conduit snaps without leaving burrs inside.
- 1" scoring wheel conveniently located in base of the handle; no tools required to replace scoring wheels.
- Four roller tracks specifically designed for professional use.
- Compact, enclosed design for use on job sites.

Cat. No.	Length	Conduit Diameter	Weight (lbs.)
88906	6.02" (153 mm)	scores 1/2", 3/4" and 1" EMT conduit	1.25 NEW!

Replacement Parts

88907	1/2" and 3/4" EMT replacement scoring wheel	NEW!
88908	1" EMT replacement scoring wheel	NEW!



88906

88907

88908

NEW!

Carbide-Tipped Hole Cutters

Carbide Hole Cutter

Cat. No.	Size	Conduit & Pipe Sizes	Weight (lbs.)
31850	3/4"	-	.25 NEW!
31852	7/8"	1/2"	.30 NEW!
31854	1"	-	.35 NEW!
31856	1-1/8"	3/4"	.40 NEW!
31857	1-7/32"	-	.40 NEW!
31858	1-1/4"	-	.40 NEW!
31860	1-3/8"	1"	.45 NEW!
31862	1-7/16"	-	.40 NEW!
31864	1-1/2"	-	.45 NEW!
31866	1-3/4"	1-1/4"	.70 NEW!
31868	2"	1-1/2"	.80 NEW!
31870	2-1/2"	2"	.95 NEW!

Replacement Parts

31874	replacement hole cutter pilot bit	.05 NEW!
-------	-----------------------------------	-----------------



NEW!

31860

- Cuts quick, precise holes in stainless steel, mild steel, iron, copper and brass sheet up to 3/16" (5 mm) thick.
- Smooth start pilot drill bit for greater control.
- Split point pilot drill bit prevents bit walking.
- Integrated flange prevents the operator from drilling beyond the sheet metal.
- Ejection spring for easy slug removal.

All dimensions are in inches and (millimeters) unless otherwise specified.

WARNING: Always wear approved eye protection.

WARNING: Do NOT use to cut metallic pipes or cable wire.

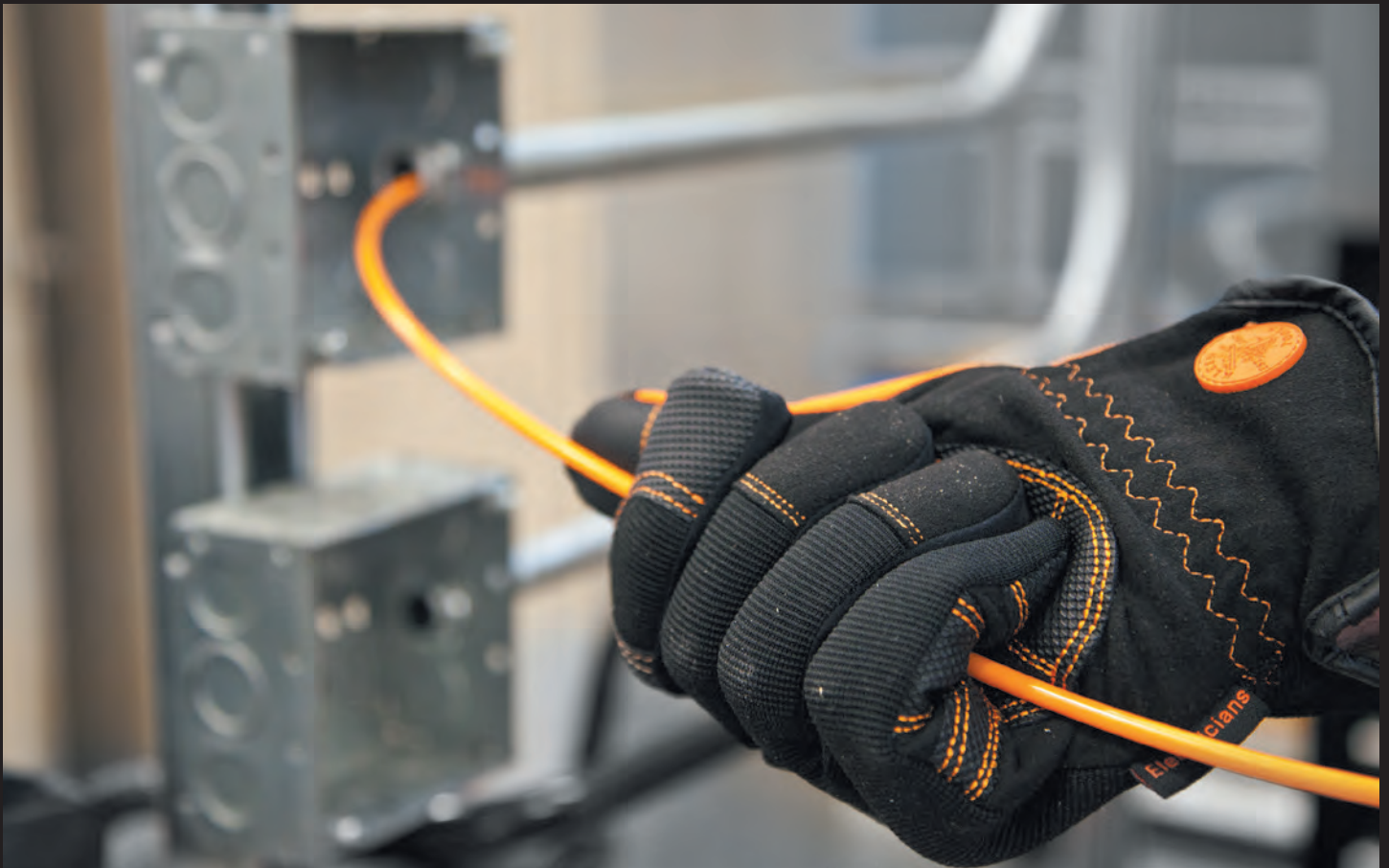
WARNING: Never use on or near live electrical circuits.

WARNING: Do NOT cut cold PVC.

Innovative Quality

Since 1857, the goal of Klein Tools has always been the same - to offer high quality hand tools that are durable, enhance performance and reduce effort on the jobsite.

Klein Tools' laser-etched fish tapes and conduit benders blend innovation and functional design to meet the needs of the professional electrician.



F o r P r o f e s s i o n a l s . . . S i n c e 1 8 5 7 ®

www.kleintools.com

Klein Tools, Inc. • 450 Bond Street • Lincolnshire, IL 60069-1418
Phone: 847-821-5500 • Toll free: 800-553-4676 • fax: 800-553-4876

FISH TAPES, ACCESSORIES & CONDUIT TOOLS

Innovative, high quality solutions for wire pulling and conduit bending



PULL



FISH



BEND

For Professionals... Since 1857®

**KLEIN
TOOLS®**

INTRODUCING

Laser-Etched Fiberglass Fish Tapes



NON-CONDUCTIVE



PERMANENT 1' MARKINGS



DURABLE LEADER

The Advantages of Laser-Etched Markings

- Laser-etched in 1' increments allowing you to more accurately measure the depth of conduit runs.
- Descending markings let you know right away how much tape is left to pay out.
- Laser-etched markings are permanent. They won't rub or scratch off.

Laser-etched markings are also available on Klein® Steel Fish Tapes.



Exclusive!
Laser-Etched Markings

PATENT PENDING

Unique sloped handle optimizes the position of your hand for quick hand-over-hand rewinds and allows a more level tape payout.

Raised fingergrrips help transfer 100% of the winding power from your hand and fingers.

Polypropylene case and handle are extremely durable and offer the maximum in shock and impact resistance.

The round inner ring design provides a smooth, consistent and comfortable surface for winding and rewinding.

QUALITY TOOLS SINCE 1857

**KLEIN
TOOLS®**

Fish Tapes



High Strength 1/8" Wide Steel Fish Tapes

Additional Features:

- Permanent, laser etched 1' increments on the tape allow you to more accurately measure the depth of conduit runs and determine the amount of tape left to pay out.
- Full grip style handle gives you a firm, steady grip as you pull tape from the case (Cat. Nos. 56000, 56001).
- The 13" case diameter means you can reel in 15% more tape in a single revolution than similar sized 12" tapes saving you time and effort (Cat. Nos. 56003, 56004).



Cat. No.	Tape Size	Reel Diameter	Weight (lbs.)
56000	25' L x 1/8" W x .045" H (7 m L x 3 mm W x 1.1 mm H)	7" (178 mm)	1.0
56001	50' L x 1/8" W x .045" H (15 m L x 3 mm W x 1.1 mm H)	7" (178 mm)	1.3
56002	65' L x 1/8" W x .062" H (19 m L x 3 mm W x 1.5 mm H)	9" (229 mm)	2.6
56003	125' L x 1/8" W x .062" H (38 m L x 3 mm W x 1.5 mm H)	13" (330 mm)	4.7
56004	240' L x 1/8" W x .062" H (73 m L x 3 mm W x 1.5 mm H)	13" (330 mm)	7.5

Replacement Tapes

56065	65' L x 1/8" W x .062" H (19 m L x 3 mm W x 1.5 mm H)	-	1.7 NEW!
56125	125' L x 1/8" W x .062" H (38 m L x 3 mm W x 1.5 mm H)	-	3.3 NEW!
56240	240' L x 1/8" W x .062" H (73 m L x 3 mm W x 1.5 mm H)	-	6.1 NEW!



- Replacement tapes available in 65', 125', & 240' lengths (Cat. Nos. 56065, 56125, 56240).

All dimensions are in inches and (millimeters) unless otherwise specified.

WARNING: Wear approved eye protection when feeding, pulling or rewinding fish tape.

WARNING: Never remove screws while fish tape is coiled inside reel.

WARNING: Do NOT use any fish tape on or near live circuits. Use extreme caution when working near any electrical equipment.

WARNING: Use a safe work position to avoid loss of balance when using fish tape.

Fish Tapes

High Strength 1/4" Wide Steel Fish Tapes

Additional Features:

- Permanent, laser etched 1' increments on the tape allow you to more accurately measure the depth of conduit runs and determine the amount of tape left to pay out.
- Tempered, high quality tape keeps its stability as it glides between surfaces for effective pushing and pulling of wire under carpets, through insulated walls and over suspended ceilings.
- 25' length is perfect for short wire runs associated with light commercial, residential and voice-data-video-audio installations (Cat. No. 56005).



56005 Has a No Snag Plastic Tip

Cat. No.	Tape Size	Reel Diameter	Weight (lbs.)
56005	25' L x 1/4" W x .030" H (7 m L x 6.3 mm W x .7 mm H)	7" (178 mm)	1.1
56006	100' L x 1/4" W x .062" H (30 m L x 6.3 mm W x 1.5 mm H)	13" (330 mm)	6.8

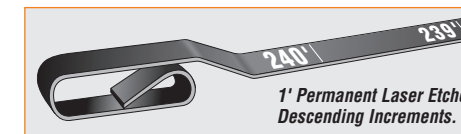


56005

High Strength 1/8" Stainless Steel Fish Tapes

Additional Features:

- Permanent, laser etched 1' increments on the tape allow you to more accurately measure the depth of conduit runs and determine the amount of tape left to pay out.
- Stainless Steel fish tape is corrosion resistant and extends the life of the tool.
- High strength spring steel fish tapes are stiff for long runs and are great for heavy duty wire pulls.



Cat. No.	Tape Size	Reel Diameter	Weight (lbs.)
56007	125' L x 1/8" W x .062" H (38 m L x 3 mm W x 1.5 mm H)	13" (330 mm)	4.7
56008	240' L x 1/8" W x .062" H (73 m L x 3 mm W x 1.5 mm H)	13" (330 mm)	7.5



56008

Fiberglass Fish Tapes

Additional Features:

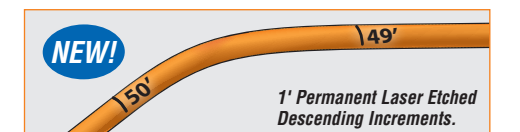
- Permanent, laser etched 1' increments on the tape allow you to more accurately measure the depth of conduit runs and determine the amount of tape left to pay out.
- Designed for flexibility and easy navigation through conduit runs.
- Non conductive, fiberglass fish tape slides easily over existing wires and through multiple bends.
- The lightweight and strong fiberglass composite tape resists harsh elements and is strength rated up to 500 pulling pounds.
- The 13" case diameter means you can reel in 15% more tape in a single revolution vs. a standard 12" case (except Cat. No. 56014).
- Durable 7" leader helps push through crowded conduit.



Cat. No.	Tape Size	Reel Diameter	Weight (lbs.)
56009	50' L x 3/16" W (7" leader) (15 m L x 4.8 mm W)	13" (330 mm)	2.8
56010	100' L x 3/16" W (7" leader) (30 m L x 4.8 mm W)	13" (330 mm)	3.5
56014	200' L x 3/16" W (7" leader) (60 m L x 4.8 mm W)	17" (432 mm)	6.2 NEW!



56010



All dimensions are in inches and (millimeters) unless otherwise specified.

WARNING: Wear approved eye protection when feeding, pulling or rewinding fish tape.

WARNING: Never remove screws while fish tape is coiled inside reel.

WARNING: Do NOT use any fish tape on or near live circuits. Use extreme caution when working near any electrical equipment.

WARNING: Use a safe work position to avoid loss of balance when using fish tape.

Fish Tapes

Nylon Fish Tapes

Additional Features:

- Designed for flexibility and easy navigation through conduit runs.
- Non conductive, nylon fish tape slides easily over existing wires and through multiple bends.
- The lightweight and strong nylon composite tape resists harsh elements and is strength rated up to 200 pulling pounds.
- The 13" case diameter means you can reel in 15% more tape in a single revolution vs. a standard 12" case.



56012

Cat. No.	Tape Size	Reel Diameter	Weight (lbs.)
56011	50' L x 3/16" W (15 m L x 4.8 mm W)	13" (330 mm)	2.3
56012	100' L x 3/16" W (30 m L x 4.8 mm W)	13" (330 mm)	3.0

Spiral Steel Fish Tapes

Additional Features:

- Designed for super flexibility and easy navigation through conduit runs.
- Spiral Steel fish tape slides easily over existing wires and through multiple bends.
- The durable spiral steel tape construction yields a maximum pulling force of up to 500 lbs.
- The 13" case diameter means you can reel in 15% more tape in a single revolution vs. a standard 12" case.



56013

Cat. No.	Tape Size	Reel Diameter	Weight (lbs.)
56013	50' L x 3/16" W (15 m L x 4.8 mm W)	13" (330 mm)	5.1

Fish Tape Accessories

Poly Pull Line

- Use polypropylene line with manual or power fishing systems for light duty cable or rope pulling applications.
- Ready to use storage containers quickly dispense a tangle free line and also protects line from direct sunlight.
- Line is resistant to rot and mildew.
- Up to 210 lbs. average breaking strength.



56108



56110

Cat. No.	Description	Container Type	Weight (lbs.)
56108	500' (152 m) poly pull line with orange tracer	one-quart size w/locking lid	1
56110	6500' (1981 m) poly pull line with orange tracer	five-gallon bucket	11

All dimensions are in inches and (millimeters) unless otherwise specified.

▲WARNING: Wear approved eye protection when feeding, pulling or rewinding fish tape.

▲WARNING: Never remove screws while fish tape is coiled inside reel.

▲WARNING: Do NOT use any fish tape on or near live circuits. Use extreme caution when working near any electrical equipment.

▲WARNING: Use a safe work position to avoid loss of balance when using fish tape.

Fish Tape Accessories

Steel Fish Tape Puller

- Exclusive design improves your grip while pulling all types of flat steel fish tape.
- Rugged metal construction is comfortable in your hand and provides excellent leverage.
- Internal resistance mechanism securely locks fish tape in place for pulling.
- Compatible with 1/8" & 1/4" tape widths and thicknesses of .045", .062" and .030".
- Compact size – fits easily in your pocket or a tool pouch.



50355

Cat. No.	Length	Weight (lbs.)
50355	3-1/4" (83 mm)	.33

Composite Fish Tape Puller

- Exclusive design improves your grip while pulling round-diameter, composite fish tapes.
- Flexible rubberized construction is comfortable in your hand and provides excellent leverage.
- Interlocking teeth molded into channel wrap completely around the tape when squeezed.
- Fits conveniently into center of 13" fish tape case for easy storage.
- Compatible with Nylon, Fiberglass and Spiral Steel tapes.



56106

Cat. No.	Length	Weight (lbs.)
56106	7-3/4" (196 mm)	.6

Steel Fish Tape Swivel Eyelet

- For use with 1/8" wide steel fish tapes.
- Swivel head design helps prevent kinks and allows smoother, easier fishing in tight turns.
- High capacity eyelet holds up to five #12 unstripped wires or seven #10 bare wires.
- High strength steel construction allows for optimal performance over repeated uses.
- Retrofit instructions included.



50351

Cat. No.	Length	Diameter	Weight (lbs.)
50351	1-1/2" (38 mm)	3/16" (5 mm)	.03

13.5" Flexible Leader for Steel Fish Tapes

- The 3/16" diameter tape has a rustproof inner steel cable core wrapped with a spiral cover for exceptional flexibility.
- Flexible leader guides steel tapes through 90° bends and makes pulling and pushing flat steel tapes easier.



- For use with 1/8" wide steel fish tapes.
- Heavy duty construction is strength rated up to 500 pulling pounds.
- High capacity eyelet holds up to five #12 unstripped wires and seven #10 bare wires.
- Retrofit instructions included.

Cat. No.	Length	Diameter	Weight (lbs.)
50350	13-1/2" (343 mm)	3/16" (5 mm)	.10

50350

6 Loop Wire Pulling Leader

- Save time by attaching leader to the end of a fish tape and pull up to 6 wires at once.
- Braided steel construction provides up to 450 lbs. pull strength on main eyelet.
- Flexible construction allows for easy navigation through multiple bends in conduit.
- Staggered loop lengths won't overlap and clog pipe.
- For use with 1/8" and 1/4" flat steel fish tapes.



56107

Cat. No.	Length	Weight (lbs.)
56107	11-1/4" (285 mm)	.2

All dimensions are in inches and (millimeters) unless otherwise specified.

▲WARNING: Wear approved eye protection when feeding, pulling or rewinding fish tape.

▲WARNING: Never remove screws while fish tape is coiled inside reel.

▲WARNING: Do NOT use any fish tape on or near live circuits. Use extreme caution when working near any electrical equipment.

▲WARNING: Use a safe work position to avoid loss of balance when using fish tape.

Fish Tape Accessories

Fiberglass Fish Tape Repair Kit

- Contains high leverage ratcheting crimper, two replacement eyelets, two 7" replacement leaders, one tube of quick dry glue and comprehensive instructions.
- Multi-function ratcheting crimper (Cat. No. 56115V) cuts tape cleanly, strips tapes and crimps on new attachments.
- Newly crimped on eyelets meet or exceed original factory pulling strength requirements.
- Protective carry case firmly holds all tools and additional parts in handy, organized compartments.



Cat. No.	Set Contains	Weight (lbs.)
56115	High Leverage Crimper (1 ea.), 7" flexible leader (2 ea.), Eyelets (2 ea.), Tube quick-drying Glue (1 ea)	2.18

56115

6-Pack Replacement Eyelets & 2-Pack 7" Replacement Flexible Leaders

- For use only with fiberglass fish tapes (Cat. No. 56009, 56010 & 56014).
- Not compatible with nylon fish tapes (Cat. No. 56011 & 56012).
- Attach with Klein Tools ratcheting crimper (Cat. No. 56115V) available in kit 56115 only.



56116

Cat. No.	Length	Weight (lbs.)
56116	1.5" (38 mm)	.06
56120	8.94" (227 mm)	.11



56120

Fish Rods

Extension Pole - WireSpanner™



56105

- Push/Pull wires over long spans of suspended ceilings, sub-floors, crawl spaces and attics.
- The durable 54" pole quickly and easily telescopes to a maximum of 22' long.
- Each section locks securely into place and will not spin loose or collapse.
- High quality, rigid fiberglass is sturdy, lightweight and slides easily over obstructions.
- Large capacity hook/skid tip pulls multiple wires easily and has a separate eyelet for wire tie-on.

Cat. No.	Description	Collapsed Length	Extended Length	Max. Diameter	Weight (lbs.)
56105	WireSpanner™ installation tool	54" (1.3 m)	22' (6.7 m)	2" (50 mm)	4
56118	WireSpanner™ carry case	-	-	-	0.4

All dimensions are in inches and (millimeters) unless otherwise specified.

▲WARNING: Wear approved eye protection when feeding, pulling or rewinding fish tape.

▲WARNING: Never remove screws while fish tape is coiled inside reel.

▲WARNING: Do NOT use any fish tape on or near live circuits. Use extreme caution when working near any electrical equipment.

▲WARNING: Use a safe work position to avoid loss of balance when using fish tape.

Fish Rods

Fish Rods



56100

- Use to install wires above ceilings, through walls and under carpets and raised floors.
- 1/4" diameter Fish Rods are flexible, yet provide excellent rigidity for extended distance stand out.
- Connect individual sections end-to-end to create a variety of lengths.
- Threaded connectors are beveled on both ends to prevent snagging and hang ups on obstructions.
- Sets contain (1ea.) steel "bullnose" and (1ea.) "J" hook accessory for attaching wires.
- Cat. No. 56103 also includes one 3/16" x 5' Glow Rod section to help guide Fish Rods into dark spaces.

Cat. No.	Description	Set Contains	Material	Max. Diameter	Weight (lbs.)
56100	12' (3.6 m) fish rod set	(3 ea.) 1/4" x 4' (6.3 mm x 1.2 m) fish rods (1 ea.) bull nose attachment (1 ea.) hook attachment	fiberglass	1/4" (6 mm)	1.2
56101	24' (7.3 m) fish rod set	(4 ea.) 1/4" x 6' (6.3 mm x 1.8 m) fish rods (1 ea.) bull nose attachment (1 ea.) hook attachment	fiberglass	1/4" (6 mm)	2.2
56103	25' (7.6 m) fish and glow rod set	(5 ea.) 1/4" x 4' (6.3 mm x 1.2 m) fish rods (1 ea.) 3/16" x 5' (4.8 mm x 1.5 m) glow rod (1 ea.) bull nose attachment (1 ea.) hook attachment	fiberglass and luminescent rods	1/4" (6 mm)	2.7
56111	4' (1.2 m) fish rod	-	fiberglass	1/4" (6 mm)	.2
56112	6' (1.8 m) fish rod	-	fiberglass	1/4" (6 mm)	.2

Glow Rods



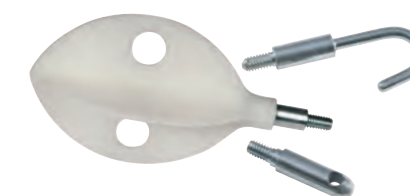
56518

- Use to install wires above ceilings, through walls and under carpets and raised floors.
- Luminescent rods glow in the dark and are rechargeable in most available light sources.
- 3/16" and 5/32" diameter Glow Rods are extremely flexible to navigate tight bends and narrow openings.
- Connect individual sections end-to-end to create a variety of lengths.
- Threaded connectors are beveled on both ends to prevent snagging and hang ups on obstructions.
- Cat. No. 56109 features 2 permanently affixed bull nose tips and offers the ultimate in flexibility.

Cat. No.	Description	Set Contains	Material	Max. Diameter	Weight (lbs.)
56102	15' (4.5 m) glow rod set	(3 ea.) 3/16" x 5' (4.8 mm x 1.5 m) glow rods (1 ea.) bull nose attachment (1 ea.) hook attachment	luminescent fiberglass	3/16" (5 mm)	1.0
56508	9' (2.7 m) glow rod set	(6 ea.) 3/16" x 18" (4.8 mm x .5 m) glow rods (1 ea.) bull nose attachment (1 ea.) hook attachment	luminescent fiberglass	3/16" (5 mm)	.6 NEW!
56109	6' (1.8 m) glow rod	-	luminescent fiberglass	5/32" (3 mm)	.09
56114	5' (1.5 m) glow rod	-	luminescent fiberglass	3/16" (5 mm)	.2
56518	18' (5.5 m) glow rod set	(3 ea.) 5/32" x 6' (3 mm x 1.8 m) glow rods (1 ea.) bull nose attachment (1 ea.) hook attachment	luminescent fiberglass	5/32" (3 mm)	.9 NEW!

3-Piece Fish and Glow Rod Attachment Set

- Whisk attachment helps guide rods over obstructions and can roll side-to-side to help "steer" left or right.
- Hook attachment helps grab and retrieve wires or other objects from a distance.
- Compatible with 1/4", 3/16", and 5/32" rod sizes.



56104

Cat. No.	Set Contains	Weight (lbs.)
56104	(1 ea.) whisk attachment (1 ea.) bull nose attachment (1 ea.) hook attachment	.1

All dimensions are in inches and (millimeters) unless otherwise specified.

▲WARNING: Wear approved eye protection when feeding, pulling or rewinding fish tape.

▲WARNING: Never remove screws while fish tape is coiled inside reel.

▲WARNING: Do NOT use any fish tape on or near live circuits. Use extreme caution when working near any electrical equipment.

▲WARNING: Use a safe work position to avoid loss of balance when using fish tape.

Wire and Cable Pulling Lubricant



One-Quart Premium Synthetic Clear Lubricant

- Klein's Premium Synthetic Clear Lubricant is designed for use primarily in finished workspaces (i.e. around painted walls and carpeted floors).
- The crystal clear formulation is easy to clean-up and will not stain.
- Excellent all purpose lubricant for electrical or datacom applications.
- Compatible with most types of cable jackets.
- Temperature stable - will not separate out in hot environments or when exposed to freezing.



51028

Cat. No.	Container	Temperature Use Range	Weight
51028	one-quart squeeze bottle	20° F to 120° F (-5° C to 50° C)	2.3

Premium Synthetic Wax[®]

- Klein's Premium Synthetic Wax Pulling Lubricant is temperature stable and does not liquify and drop off after high temperature exposure.
- Compatible with most types of cable, including low density polyethylene.
- Superior "clingability" coats wires and conduit evenly. Exceptional lubricity.
- Non-staining, slow-drying, easy clean-up formula.



51010

51012

Cat. No.	Container	Temperature Use Range	Weight (lbs.)
51010	one-quart squeeze bottle	20° F to 122° F (-6° C to 50° C)	2.25
51012	one-gallon pail	20° F to 122° F (-6° C to 50° C)	8.75
51013	five-gallon pail	20° F to 122° F (-6° C to 50° C)	44
56117	one-quart squeeze bottle - 6 pack	20° F to 122° F (-6° C to 50° C)	13.5

Premium Synthetic Polymer[®]

CERTIFIED TO CSA STANDARD C22.2 NO. 249-96



51015

51017

Cat. No.	Container	Temperature Use Range	Weight (lbs.)
51015	one-quart squeeze bottle	20° F to 140° F (-6° C to 60° C)	2.33
51017	one-gallon pail	20° F to 140° F (-6° C to 60° C)	8.75
51018	five-gallon pail	20° F to 140° F (-6° C to 60° C)	44

⚠WARNING: Do not use wet product on live circuits. Compound is electrically conductive before it dries.

Gloves

Electrician's Gloves

- Durable construction allows flexibility.
- Features slip resistant construction.
- Spandex material is breathable and comfortable to wear all day.
- Constructed with a reinforced area at the base of the thumb.
- Elastic cuff for secure and comfortable fit.
- Index fingers are wrapped with slip-resistant material.
- Extended cuff for easy on/off.



40072

Conduit Tools

Side-Cutting Pliers – Fish-Tape Pulling

- Quickly and easily pulls 1/8" or 1/4" flat-steel fish tape without damaging the tape.
- High leverage design. Rivet is closer to the cutting edge for 46% greater cutting and gripping power than other plier designs.
- Streamlined design with sure-gripping, cross-hatched knurled jaws.



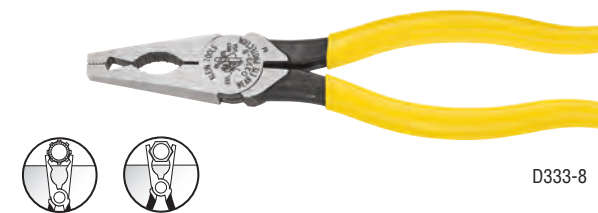
J2000-9NECRTP

Cat. No.	Nose Type	Overall Length	Jaw Length	Jaw Width	Jaw Thickness	Knife Length	Handle Finish	Handle Color	Weight (lbs.)
D213-9NETP	New England	9-3/8" (238 mm)	1-19/32" (41 mm)	1-1/14" (32 mm)	5/8" (16 mm)	25/32" (20 mm)	plastic-dipped	dark blue	1.06
Journeyman Series – Dual-material handles									
J213-9NETP	New England	9-1/2" (241 mm)	1-19/32" (41 mm)	1-1/14" (32 mm)	5/8" (16 mm)	25/32" (20 mm)	Journeyman	dark blue/black	1.11
2000 Series* – Heavy-duty cutting knives									
D2000-9NETP	New England	9-3/8" (238 mm)	1-19/32" (41 mm)	1-1/14" (32 mm)	5/8" (16 mm)	25/32" (20 mm)	plastic-dipped	royal blue	1.09
Journeyman 2000 Series* – Dual-material handles									
J2000-9NETP	New England	9-1/2" (241 mm)	1-19/32" (41 mm)	1-1/14" (32 mm)	5/8" (16 mm)	25/32" (20 mm)	Journeyman	light blue/black	1.14
J2000-9NECRTP	New England	9-1/2" (241 mm)	1-19/32" (41 mm)	1-1/14" (32 mm)	5/8" (16 mm)	25/32" (20 mm)	Journeyman	blue/black	1.13

*Cuts ACSR, screws, nails, and most hardened wire. Features combination polished and black-oxide finish.

Conduit Pliers – Locknut and Reaming

- Tightens 1/2" (13 mm) and 3/4" (19 mm) EMT or 1/2" (13 mm) rigid locknuts.
- Fits liquid tight fittings and caps.
- Reams and smooths both inside and outside of conduit.
- Knurled jaws at nose tip pull wire or fish tape.
- Machined nose fits snugly into locknut wings.



D333-8

Cat. No.	Overall Length	Jaw Length	Jaw Width	Jaw Thickness	Point Thickness	Handle Finish	Handle Color	Weight (lbs.)
D333-8	7-3/4" (197 mm)	1-5/8" (41 mm)	15/16" (24 mm)	1/2" (13 mm)	3/16" (4.8 mm)	plastic-dipped	yellow	.55

Conduit-Fitting and Reaming Screwdriver

- Hooded-blade design keeps tip from slipping out of screws, especially when tightening hard-to-reach conduit fittings. Thicker hood is designed for rugged use.
- Reams and smooths 1/2" (13 mm), 3/4" (19 mm), and 1" (25 mm) thin-wall conduit ends to protect wire and permit correct installation of fittings.



85191

Cat. No.	Shank Tip Width	Shank Length	Overall Length	Weight (lbs.)
85191	3/8" (10 mm)	2-1/2" (64 mm)	7-1/2" (191 mm)	.55
19353	conduit reamer replacement blade kit			.01

- Reams both the inside and outside of the conduit at the same time.
- Longer Cushion-Grip handle provides comfort and more torque for reaming.

All dimensions are in inches and (millimeters) unless otherwise specified.

⚠WARNING: Always wear approved eye protection.

⚠WARNING: NOT insulated. Plastic-dipped or slip-on plastic handles are NOT intended for protection against electrical shock.

INTRODUCING Iron Conduit Benders

Klein Tools now offers a full line of iron conduit benders designed with the electricians' feedback in mind; the ultimate in performance and durability you've come to expect from the #1 choice among professional electricians.



The Features of Iron Conduit Benders

- Exclusive design reduces rippling and ovaling of conduit.
- Bold cast-in symbols, degree scales, multiplier scales and center of bend marks help save time on the job.



- The traditional Benfield® head design accurately and consistently performs common bends such as Stub Ups, Offsets, Back-to-Back and Saddle Bends.



Interior hook surface prevents conduit from rolling or twisting during bends.

Interior clamp securely holds conduit while cutting with hacksaw.

Wide foot pedal provides excellent stability, leverage and comfort. Features angled grooves for extra traction.

Easily visible arrow for ease of alignment on conduit marks.



Klein's advanced casting process precisely controls metal flow for the ultimate in core strength and ductility.

QUALITY TOOLS SINCE 1857



10"	14"	18"	22"	26"	30"	34"	38"	42"	46"	50"
8-1/2"	9-3/4"	11-1/2"	13-1/2"	15-1/2"	17-1/2"	19-1/2"	21-1/2"	23-1/2"	25-1/2"	27-1/2"
45°	45°	45°	45°	45°	45°	45°	45°	45°	45°	45°
3"	3-3/8"	3-3/4"	3-3/8"	3-3/4"	3-3/8"	3-3/4"	3-3/8"	3-3/4"	3-3/8"	3-3/4"

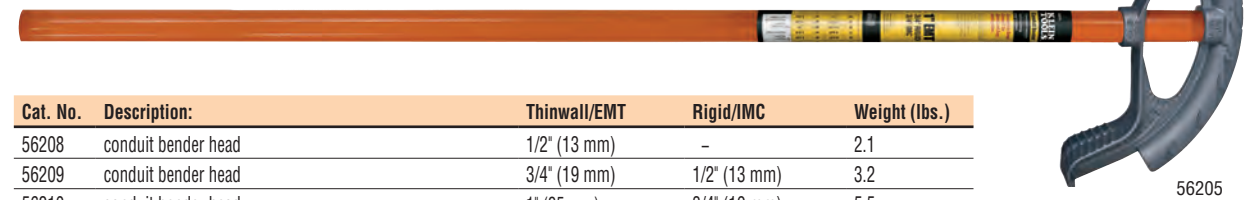


Conduit Benders

Iron Conduit Benders

Additional Features:

- High strength steel handle features a swaged end for inserting conduit to correct overbends (Cat. Nos. 56203 & 56204 only).
- Bright orange color handle is easy to spot on the jobsite.



Cat. No.	Description:	Thinwall/EMT	Rigid/IMC	Weight (lbs.)
56208	conduit bender head	1/2" (13 mm)	-	2.1
56209	conduit bender head	3/4" (19 mm)	1/2" (13 mm)	3.2
56210	conduit bender head	1" (25 mm)	3/4" (19 mm)	5.5
56211	conduit bender head	1 1/4" (32 mm)	1" (25 mm)	16.6 NEW!
56203	assembled conduit bender w/#51427 handle	1/2" (13 mm)	-	5.5
56204	assembled conduit bender w/#51427 handle	3/4" (19 mm)	1/2" (13 mm)	6.6
56205	assembled conduit bender w/#51428 handle	1" (25 mm)	3/4" (19 mm)	11.6



Aluminum Conduit Benders

- Lightweight die-cast aluminum construction.
- The traditional Benfield® head design accurately and consistently performs common bends such as Stub Ups, Offsets, Back-to-Back and Saddle Bends.
- Bold cast-in benchmark symbols, degree scales and multiplier scales help save time on the job.
- Textured interior hook surface prevents conduit from rolling or twisting during bends.
- Wide foot pedal provides excellent stability and features angled grooves for extra traction.

Cat. No.	Description:	Thinwall/EMT	Rigid/IMC	Radius	Weight (lbs.)
56206	assembled aluminum conduit bender with #51427 handle	1/2" (13 mm)	-	4"	4.4
56207	assembled aluminum conduit bender with #51427 handle	3/4" (19 mm)	1/2" (13 mm)	5"	5.4



56206

Conduit Bender Handles

Bender Handles



51427

- Available in multiple sizes and lengths and are compatible with all Klein Tools conduit bender heads.
- High-strength steel eliminates flex and provides excellent feel, control and leverage.
- Handle features an enlarged diameter hollow end for inserting conduit to correct overbends (Cat. No. 51427).
- Bright orange color is easy to spot on the jobsite.

Cat. No.	Description:	Weight (lbs.)
51427	conduit bender handle - 38" L, 3/4" NPT tap size fits 1/2" and 3/4" bender heads and is replacement handle for #56206 and #56207.	3.5
51428	conduit bender handle - 44" L, 1" NPT tap size fits 1" bender head.	6.0
51429	conduit bender handle - 54" L, 1-1/4" NPT tap size fits 1-1/4" bender head.	8.9

All dimensions are in inches and (millimeters) unless otherwise specified.

WARNING: Always wear approved eye protection.

Armored Cable Cutter

BX and Armored Cable Cutter

- Cuts BX and 3/8" armored cable.
- Eliminates burrs.
- Does not nick cable.
- Easily cuts 3/8" flexible conduit and #10, 12, and 14 armored cables with up to 4 wires with a couple of turns of the handle.
- Depth of cut adjusts between standard MC and reduced diameter MC.
- Extra blade storage in handle.
- Use with Klein Tools replacement blade Cat. No. 53726 or 53726-SEN.

Cat. No.	Length	Weight (lbs.)
53725	7-1/4" (184 mm)	2.00
Replacement Parts		
53726	BX cutter replacement blade	0.1



53725

Conduit Scoring Tool

Electrician's Conduit Scoring Tool

- Durable zinc cast scoring tool eliminates spiraling
- Used for scoring 1/2", 3/4" and 1" EMT conduit.
- Klein-designed, patented scoring wheel scores and allows clean conduit snaps without leaving burrs inside.
- 1" scoring wheel conveniently located in base of the handle; no tools required to replace scoring wheels.
- Four roller tracks specifically designed for professional use.
- Compact, enclosed design for use on job sites.

Cat. No.	Length	Conduit Diameter	Weight (lbs.)
88906	6.02" (153 mm)	scores 1/2", 3/4" and 1" EMT conduit	1.25 NEW!



88906

Replacement Parts			
88907	1/2" and 3/4" EMT replacement scoring wheel	NEW!	
88908	1" EMT replacement scoring wheel	NEW!	

Carbide-Tipped Hole Cutters

Carbide Hole Cutter

Cat. No.	Size	Conduit & Pipe Sizes	Weight (lbs.)
31850	3/4"	-	.25 NEW!
31852	7/8"	1/2"	.30 NEW!
31854	1"	-	.35 NEW!
31856	1-1/8"	3/4"	.40 NEW!
31857	1-7/32"	-	.40 NEW!
31858	1-1/4"	-	.40 NEW!
31860	1-3/8"	1"	.45 NEW!
31862	1-7/16"	-	.40 NEW!
31864	1-1/2"	-	.45 NEW!
31866	1-3/4"	1-1/4"	.70 NEW!
31868	2"	1-1/2"	.80 NEW!
31870	2-1/2"	2"	.95 NEW!

Replacement Parts		
31874	replacement hole cutter pilot bit	.05 NEW!



NEW!

31860

- Cuts quick, precise holes in stainless steel, mild steel, iron, copper and brass sheet up to 3/16" (5 mm) thick.
- Smooth start pilot drill bit for greater control.
- Split point pilot drill bit prevents bit walking.
- Integrated flange prevents the operator from drilling beyond the sheet metal.
- Ejection spring for easy slug removal.

All dimensions are in inches and (millimeters) unless otherwise specified.

WARNING: Always wear approved eye protection.

WARNING: Do NOT use to cut metallic pipes or cable wire.

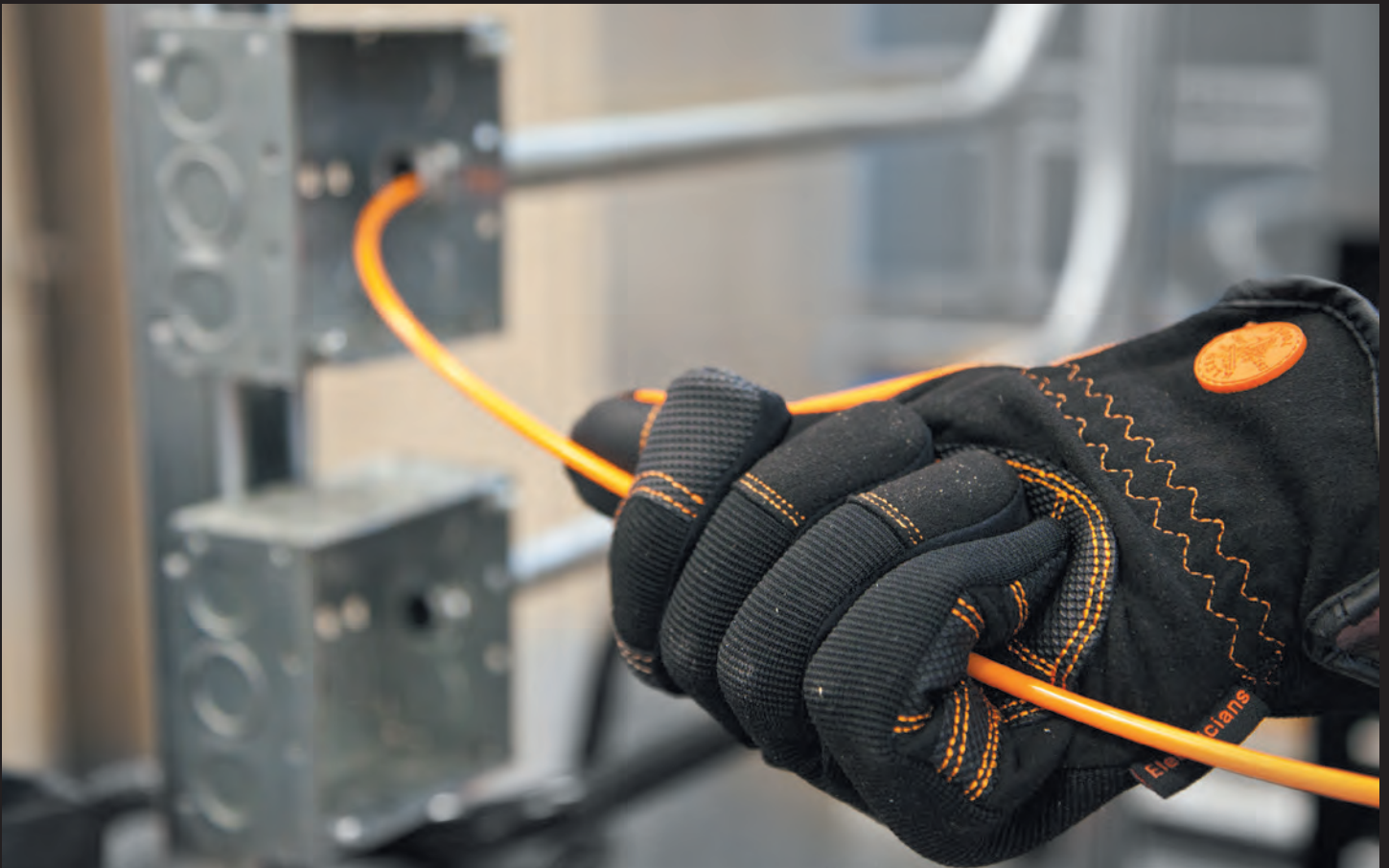
WARNING: Never use on or near live electrical circuits.

WARNING: Do NOT cut cold PVC.

Innovative Quality

Since 1857, the goal of Klein Tools has always been the same - to offer high quality hand tools that are durable, enhance performance and reduce effort on the jobsite.

Klein Tools' laser-etched fish tapes and conduit benders blend innovation and functional design to meet the needs of the professional electrician.



F o r P r o f e s s i o n a l s . . . S i n c e 1 8 5 7 ®

www.kleintools.com

Klein Tools, Inc. • 450 Bond Street • Lincolnshire, IL 60069-1418
Phone: 847-821-5500 • Toll free: 800-553-4676 • fax: 800-553-4876