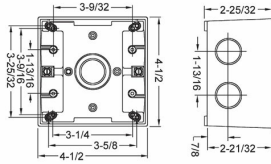


**TWO GANG BOXES - 2 IN. TO 2-5/8 IN. DEEP****2-5/8 in. Deep with Lugs - Five Threaded Outlets - 4-1/2 in. x 4-1/2 in.
N/A****D06**

Catalog #: 5389-0

APPLICATIONSFor use in branch circuit wiring in wet, damp, or dry locations
May be used as a weatherproof junction box, or as a housing for receptacles, switches, and GFCI's**PRODUCT FEATURES**Reinforced connector outlets
State-of-the-art powder coat finish provides maximum weatherability and scratch resistance
Eight box mounting options with detachable lugs
Two closure plugs included
Hubs accept all threaded fittings and threaded conduit
Ground screw installed
Multi-lingual instructions in each package
Includes gasket and mounting hardware
N/A**UL LISTED**

File E195978

CSA

C22.2 No. 18

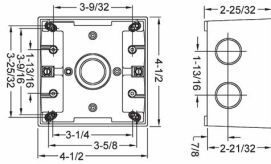
NEMA

3R Rated

GENERAL PRODUCT INFORMATION

Color: Gray

CONFIGURATIONNumber Of Outlets: 2
Gangs: 2**PRODUCT MEASUREMENTS**Depth: 2-5/8 in.
Outlet Size: 1 in.
Cubic Inches (cm³): 36.0 (589.9)
Wt. Ea. (Lbs.): 1.139**PACKAGING**Package Type: Shrink
Std. Pkg.: 9
Product UPC-A Labeled: Yes
Weight (Lbs. Per/C): 113.90
Ship Carton Length (in.): 16.19
Ship Carton Width (in.): 6.50
Ship Carton Height (in.): 8.50
Ctn Weight (Lbs.): 10.25
Pallet Qty: 810.00
UPC Number: 050169538906
I2of5: 50050169538901

**TWO GANG BOXES - 2 IN. TO 2-5/8 IN. DEEP****2-5/8 in. Deep with Lugs - Five Threaded Outlets - 4-1/2 in. x 4-1/2 in.
N/A****D06**

Catalog #: 5389-0

APPLICATIONSFor use in branch circuit wiring in wet, damp, or dry locations
May be used as a weatherproof junction box, or as a housing for receptacles, switches, and GFCI's**PRODUCT FEATURES**

- Reinforced connector outlets
- State-of-the-art powder coat finish provides maximum weatherability and scratch resistance
- Eight box mounting options with detachable lugs
- Two closure plugs included
- Hubs accept all threaded fittings and threaded conduit
- Ground screw installed
- Multi-lingual instructions in each package
- Includes gasket and mounting hardware
- N/A

UL LISTED

File E195978

CSA

C22.2 No. 18

NEMA

3R Rated

GENERAL PRODUCT INFORMATION

Color: Gray

CONFIGURATIONNumber Of Outlets: 2
Gangs: 2**PRODUCT MEASUREMENTS**Depth: 2-5/8 in.
Outlet Size: 1 in.
Cubic Inches (cm³): 36.0 (589.9)
Wt. Ea. (Lbs.): 1.139**PACKAGING**Package Type: Shrink
Std. Pkg.: 9
Product UPC-A Labeled: Yes
Weight (Lbs. Per/C): 113.90
Ship Carton Length (in.): 16.19
Ship Carton Width (in.): 6.50
Ship Carton Height (in.): 8.50
Ctn Weight (Lbs.): 10.25
Pallet Qty: 810.00
UPC Number: 050169538906
I2of5: 50050169538901