

NEW!
See
reverse

Versatile IN AND OUT™ Cover

Low profile when not in use – Weatherproof while in use



IN for
GOOD LOOKS!

**Paintable
White Cover**
VERTICAL
Standard size: **60VW**



OUT
to **PLUG IN**



*Lift sides and press
down to go back IN.*

Arlington's **IN AND OUT™ Cover** is a low profile cover when *not in use* and a deeper, weatherproof in use cover when a cord's plugged in!

In the *IN* position the cord holes at the bottom of the box are sealed to keep bugs out. But it extends quickly and easily into the *OUT* position to accommodate a plug, then back again to a low profile cover.

- Fits over all boxes or openings in new or existing projects
- Two sizes: Standard to fit over a regular size outlet or FS box and oversized, with a one-piece base plate/gasket combination that fits larger openings or a 3.5" round outlet box
- Removable cover for easier installation
- Colors: Paintable white or clear
- Vertical and horizontal styles
- Competitively priced
- UL Listed weatherproof while in use installation



Arlington

1 Stauffer Industrial Park
Scranton, PA 18517
800/233.4717
Fax 570/562.0646
www.aifittings.com

Patent pending

Vertical & Horizontal IN AND OUT™ Cover

Two sizes: Standard and Oversized combination plate/gasket



Fast, easy installation

Installation of the IN AND OUT cover with oversize base for large openings or 3.5" round boxes is shown here.

- 1 Pull device out of box as necessary.
- 2 Feed device through opening in base (cover is removable for easier access), and...
- 3 Install device through the pre-drilled holes in base.
- 4 Install plate and the installation is done!



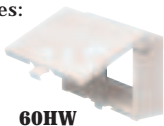
Paintable White Cover

for standard boxes:

60VW



60HW

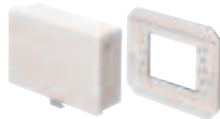


for oversized openings or 3.5" round boxes:

61VW



61HW



IN AND OUT Cover

Catalog Number	UPC/DEI/NAED Mfg. #018997	Description	Std Pkg	Cover Color
60VW	00680	Standard base/Vertical	4	White
61VW	00681	Oversize base/Vertical	4	White
60VC	00682	Standard base/Vertical	4	Clear
61VC	00683	Oversize base/Vertical	4	Clear
60HW	00684	Standard base/Horizontal	4	White
61HW	00685	Oversize base/Horizontal	4	White
60HC	00686	Standard base/Horizontal	4	Clear
61HC	00687	Oversize base/Horizontal	4	Clear

Standard base fits regular-size outlet boxes.

Oversized base plate/gasket fits larger openings or a 3.5" round outlet box.



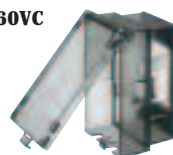
Arlington

1 Stauffer Industrial Park
Scranton, PA 18517
800/233.4717
Fax 570/562.0646
www.aifittings.com

Clear Cover

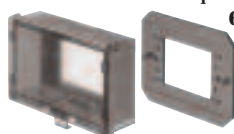
for standard boxes:

60VC



for oversized openings:

61HC



Distributed by

NEW!
See
reverse

Versatile IN AND OUT™ Cover

Low profile when not in use – Weatherproof while in use



IN for
GOOD LOOKS!

**Paintable
White Cover**
VERTICAL
Standard size: **60VV**



OUT
to **PLUG IN**

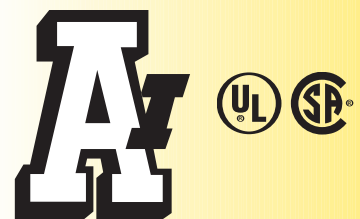


*Lift sides and press
down to go back IN.*

Arlington's **IN AND OUT™ Cover** is a low profile cover when *not in use* and a deeper, weatherproof in use cover when a cord's plugged in!

In the *IN* position the cord holes at the bottom of the box are sealed to keep bugs out. But it extends quickly and easily into the *OUT* position to accommodate a plug, then back again to a low profile cover.

- Fits over all boxes or openings in new or existing projects
- Two sizes: Standard to fit over a regular size outlet or FS box and oversized, with a one-piece base plate/gasket combination that fits larger openings or a 3.5" round outlet box
- Removable cover for easier installation
- Colors: Paintable white or clear
- Vertical and horizontal styles
- Competitively priced
- UL Listed weatherproof while in use installation



Arlington

1 Stauffer Industrial Park
Scranton, PA 18517
800/233.4717
Fax 570/562.0646
www.aifittings.com

Patent pending

Vertical & Horizontal IN AND OUT™ Cover

Two sizes: Standard and Oversized combination plate/gasket



Fast, easy installation

Installation of the IN AND OUT cover with oversize base for large openings or 3.5" round boxes is shown here.

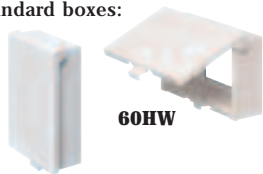
- 1 Pull device out of box as necessary.
- 2 Feed device through opening in base (cover is removable for easier access), and...
- 3 Install device through the pre-drilled holes in base.
- 4 Install plate and the installation is done!



Paintable White Cover

for standard boxes:

60VW



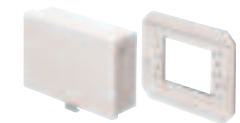
60HW

for oversized openings or 3.5" round boxes:

61VW



61HW



IN AND OUT Cover

Catalog Number	UPC/DEI/NAED Mfg. #018997	Description	Std Pkg	Cover Color
60VW	00680	Standard base/Vertical	4	White
61VW	00681	Oversize base/Vertical	4	White
60VC	00682	Standard base/Vertical	4	Clear
61VC	00683	Oversize base/Vertical	4	Clear
60HW	00684	Standard base/Horizontal	4	White
61HW	00685	Oversize base/Horizontal	4	White
60HC	00686	Standard base/Horizontal	4	Clear
61HC	00687	Oversize base/Horizontal	4	Clear

Standard base fits regular-size outlet boxes.

Oversized base plate/gasket fits larger openings or a 3.5" round outlet box.



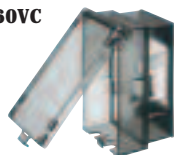
Arlington

1 Stauffer Industrial Park
Scranton, PA 18517
800/233.4717
Fax 570/562.0646
www.aifittings.com

Clear Cover

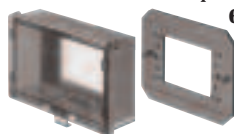
for standard boxes:

60VC



for oversized openings:

61HC



Distributed by