

## E26 6" Trim Series

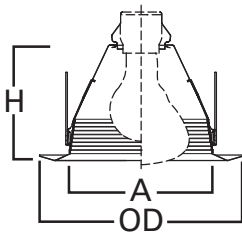
### DESCRIPTION

Shallow full cone baffle trim with self-flange in the 6" trim family for use in recessed downlighting. Compatible for use in Halo and other housings.

Catalog #		Type
Project		
Comments		Date
Prepared by		

### SPECIFICATION FEATURES

- Shallow full cone baffle for A19 and PAR30 lamps
- Torsion spring retention
- Socket supporting baffle
- Self-flanged trim ring sized to hide gaps caused by construction tolerances.
- Makes installation Air-Tite, with any compatible housing



#### Dimensions:

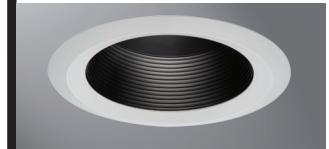
A: 4-7/16" [113mm]  
 H: 4-3/8" [110mm]  
 OD: 7-3/4" [197mm]

Housings		Max Lamp Compatibility
H7ICT	H7RICT	43W A19, 75W PAR30S, 75W PAR30L, 65W BR30
H7ICAT	H7RICAT	
E7ICAT	E7RICAT	75W PAR30S, 75W PAR30L, 85W BR30
H7UICAT		
H7ICTNB		43W A19, 75W PAR30S, 75W PAR30L, 65W BR30
H7ICATNB		
E7ICATNB		40W A19, 60W PAR30S, 75W PAR30L, 65W BR30
H27ICAT	E27ICAT	
H27RICAT	E27RICAT	40W A19, 75W PAR30S, 75W PAR30L, 65W BR30
H7T	E7TAT	
H7RT	E7RTAT	40W A19, 75W PAR30S, 75W PAR30L, 85W BR30
H7TNB	E7TATNB	
H27T	E27TAT	40W A19, 75W PAR30S, 75W PAR30L, 65W BR30
H27RT	E27RTAT	

Compatible with Halogen, Incandescent, LED\* or CFL\* lamps.



**6126WB**  
 White Baffle,  
 White Trim



**6126BB**  
 Black Baffle,  
 White Trim

### 6126

6-Inch Shallow Full Cone  
 Baffle, Self-flange



### ORDERING INFORMATION

SAMPLE NUMBER: 6126WB

Trim	Finish
6126= 6" Shallow Full Cone Baffle, Self-flange	WB=White baffle and trim BB=Black baffle, White trim

### HALO HOUSING COMPATIBILITY

Trim #	Style	H7ICT	H7ICAT	H7RICT	H7RICAT	E7ICAT	E7RICAT	H7UICAT	H7ICTNB
6126	Baffle	•	•	•	•	•	•	—	•
		H7ICATNB	E7ICATNB	H27ICAT	H27RICAT	E27ICAT	E27RICAT		
		•	•	•	•	•	•		
		H7T	H7TCP	H7RT	E7TAT	E7RTAT	H7TNB	E7TATNB	H27T
		•	—	•	•	•	•	•	•
H27RT	E27TAT	E27RTAT							
•	•	•							

For use in select other's housings, refer to U.L. classification list at [www.eaton.com/lighting/legal](http://www.eaton.com/lighting/legal).

\*UL1993 listed LED & CFL equivalent lamps permitted. Consult lamp manufacturer for conditions of use. Eaton does not warranty the lamp.



For use in Halo listed housings.



Select trims are classified for use in others housings. See [www.eaton.com/lighting/legal](http://www.eaton.com/lighting/legal).

## E26 6" Trim Series

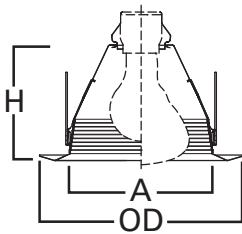
### DESCRIPTION

Shallow full cone baffle trim with self-flange in the 6" trim family for use in recessed downlighting. Compatible for use in Halo and other housings.

Catalog #		Type
Project		
Comments		Date
Prepared by		

### SPECIFICATION FEATURES

- Shallow full cone baffle for A19 and PAR30 lamps
- Torsion spring retention
- Socket supporting baffle
- Self-flanged trim ring sized to hide gaps caused by construction tolerances.
- Makes installation Air-Tite, with any compatible housing



#### Dimensions:

A: 4-7/16" [113mm]

H: 4-3/8" [110mm]

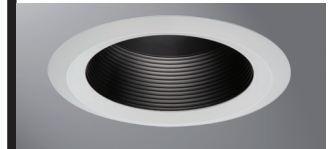
OD: 7-3/4" [197mm]

Housings		Max Lamp Compatibility
H7ICT	H7RICT	43W A19, 75W PAR30S, 75W PAR30L, 65W BR30
H7ICAT	H7RICAT	
E7ICAT	E7RICAT	
H7UICAT		75W PAR30S, 75W PAR30L, 85W BR30
H7ICTNB		43W A19, 75W PAR30S, 75W PAR30L, 65W BR30
H7ICATNB		
E7ICATNB		
H27ICAT	E27ICAT	40W A19, 60W PAR30S, 75W PAR30L, 65W BR30
H27RICAT	E27RICAT	
H7T	E7TAT	40W A19, 75W PAR30S, 75W PAR30L, 65W BR30
H7RT	E7RTAT	40W A19, 75W PAR30S, 75W PAR30L, 85W BR30
H7TNB	E7TATNB	40W A19, 75W PAR30S, 75W PAR30L, 65W BR30
H27T	E27TAT	40W A19, 75W PAR30S, 75W PAR30L, 65W BR30
H27RT	E27RTAT	

Compatible with Halogen, Incandescent, LED\* or CFL\* lamps.



**6126WB**  
White Baffle,  
White Trim



**6126BB**  
Black Baffle,  
White Trim

### 6126

6-Inch Shallow Full Cone  
Baffle, Self-flange



### ORDERING INFORMATION

SAMPLE NUMBER: 6126WB

Trim	Finish
6126= 6" Shallow Full Cone Baffle, Self-flange	WB=White baffle and trim BB=Black baffle, White trim

### HALO HOUSING COMPATIBILITY

Trim #	Style	H7ICT	H7ICAT	H7RICT	H7RICAT	E7ICAT	E7RICAT	H7UICAT	H7ICTNB
6126	Baffle	•	•	•	•	•	•	—	•
		H7ICATNB	E7ICATNB	H27ICAT	H27RICAT	E27ICAT	E27RICAT		
		•	•	•	•	•	•		
		H7T	H7TCP	H7RT	E7TAT	E7RTAT	H7TNB	E7TATNB	H27T
		•	—	•	•	•	•	•	•
H27RT	E27TAT	E27RTAT							
•	•	•							

For use in select other's housings, refer to U.L. classification list at [www.eaton.com/lighting/legal](http://www.eaton.com/lighting/legal).

\*UL1993 listed LED & CFL equivalent lamps permitted. Consult lamp manufacturer for conditions of use. Eaton does not warranty the lamp.



For use in Halo listed housings.



Select trims are classified for use in others housings. See [www.eaton.com/lighting/legal](http://www.eaton.com/lighting/legal).