

FEATURES & SPECIFICATIONS

INTENDED USE — Our recessed LED module is the most economical means to create a well lit environment with exceptional energy efficiency and near zero maintenance. Great for retrofit into existing downlight cans or new construction and remodel applications. Adjustable torsion spring and retention allows fitment into many 5" and 6" cans. The LED module maintains at least 70% light output for 35,000 hours. Indoor and Outdoor Use.

CONSTRUCTION — Aluminum spun reflector with deep regression for reduced glare. Combined LED and driver printed circuit board attached. Inner reflector cone funnels light through the pressed-in diffused lens.

OPTICS — Diffused lens at end of mixing chamber to provide even light distribution for general illumination, equivalent to 65W BR30 lamp.

Wide flood beam angle at >45°.

ELECTRICAL — Center 2 Edge™ (patent pending) technology created for a single point source. Primary power disconnect provided for simple connection to a dedicated LED connector in the housing.

Dimming down to 10%. For compatible dimmers, refer to Compatible Dimmers Chart.

835-lumen E series has an input wattage of 11.9 watts, 70 lumens per watt, equivalent to 65-watt incandescent.

E Series' patent pending driver has zero inrush, which allows power loads to be calculated with actual rated wattages.

Example: 50 units of 65BEMW LED fixtures can be installed in line with a 600-watt dimmer. 600W/11.9W = 50 fixtures.

INSTALLATION — Suitable for installation in standard and shallow-height rough-in sections.

E26 socket adapter ships standard, except product shipping to California.

Twin torsion springs ensure easy installation for 5" and 6" recessed housings.

LISTINGS — CSA certified to US and Canadian safety standards. Can be used to comply with California Title 24 Part 6 High Efficacy LED Light Source Requirements. Wet location listed. WSEC ASTM E283 for Air-Tight (with IC housings).

WARRANTY — 5-year limited warranty. This is the only warranty provided and no other statements in this specification sheet create any warranty of any kind. All other express and implied warranties are disclaimed. Complete warranty terms located at:

www.acuitybrands.com/support/warranty/terms-and-conditions

NOTE: Actual performance may differ as a result of end-user environment and application.

All values are design or typical values, measured under laboratory conditions at 25 °C.

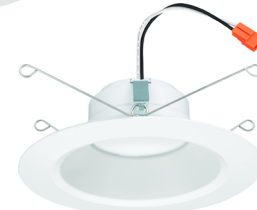
Specifications subject to change without notice.

PATENTS PENDING.

Catalog Number
Notes
Type



65BEMW



65SEMW

LED Recessed Downlighting

65BE/65SE

5" / 6" LED Module

IC/Non-IC
Retrofit



Specifications

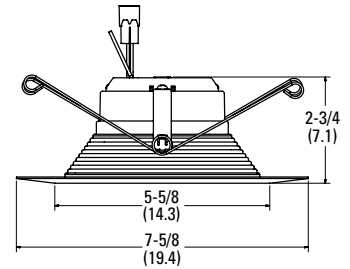
Aperture: 5-5/8 (14.3)

Ceiling opening: Determined by rough-in

Overlap trim: 7-5/8 (19.4)

Height: 2-3/4 (7.1)

All dimensions are inches (centimeters) unless otherwise indicated.



ORDERING INFORMATION

For shortest lead times, configure product using **bolded** options.

Example: 65BEMW LED 27K 90CRI

Series/Finish	Lamp	CCT / W / Lumens ¹	CRI	Voltage	Options
65BEMW 5" / 6" Baffle LED module, matte white	LED	27K 2700 K / 12.1W / 750L ³ 30K 3000 K / 11.9W / 835L 40K 4000 K / 11.9W / 845L ³	90CRI 90CRI	(blank) 120V	L/SKTWHIP No E26 Adapter (CA only) ²
65SEMW 5" / 6" Smooth LED module, matte white					

Housing options					
QC6 Quick Connect 6" LED new construction downlight	LC6 6" new construction rough-in ⁵	IC21 6" IC shallow new construction housing ⁵			
QC6R Quick Connect 6" LED Remodel Downlight	LCP 6" new construction shallow rough-in ⁵	IC21R 6" IC shallow remodel housing ⁵			
L7X 6" new construction rough-in ⁵	L5 5" new construction rough-in ⁵	IC22 6" IC new construction housing ⁵			
L7XR 6" remodel rough-in ⁵	LSR 5" new construction rough-in ⁵	IC22R 6" IC remodel housing ⁵			
L7XP 6" new construction shallow rough-in ⁵		IC23 6" IC new construction housing, no plate ⁵			
L7XPR 6" remodel shallow rough-in ⁵		IC23R 6" IC remodel housing, no plate ⁵			

Accessories: Order as separate catalog number.		
TSA6 J6 6" torsion spring adaptor (pack of 6)	RK2 CG52178 E26 E SERIES SKT ADAPTER U	E26 Adapter (Single Unit Pack)
	RK2 CG52178 E26 E SERIES SKT ADAPTER J10	E26 Adapter (Pack of 10)
	RK2 CG52178 E26 E SERIES SKT ADAPTER J25	E26 Adapter (Pack of 25)

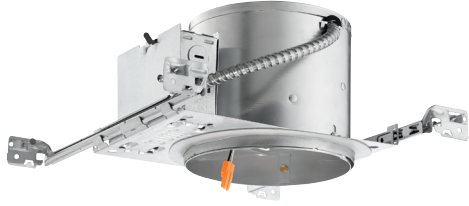
Notes

- Total system delivered lumens.
- L/SKTWHIP must be selected for standard lumen outputs for product shipping to California.
- Not available for Smooth option.
- Not available in Baffle option.
- Must be ordered on a separate line.

5"/6" LED Module

Pairs perfectly with Juno housings for a complete downlight solution: Order housings as separate catalog number.

QC6 Series - New Construction Quick Connect LED Housing



QC6R Series - New Construction Quick Connect LED Housing



TRIM INSERTS

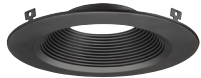
TRIM INSERTS (for field configuration; ordered separately)

Example: 65SEBN R4

Series/Finish				Packaging	
65BEMB	6" Baffle, Matte Black	65SEMB	6" Smooth, Matte Black	R4	Retail Pack of 4 units
65BEBN	6" Baffle, Brush Nickel	65SEBN	6" Smooth, Brush Nickel		
65BEORB	6" Baffle, Oil-Rubbed Bronze	65SEORB	6" Smooth, Oil-Rubbed Bronze		



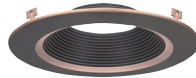
Pre-Install color finish trim insert over white 6" E Series Module.



6" Baffle, Matte Black (65BEMB)



6" Baffle, Brush Nickel (65BEBN)



6" Baffle, Oil-Rubbed Bronze (65BEORB)



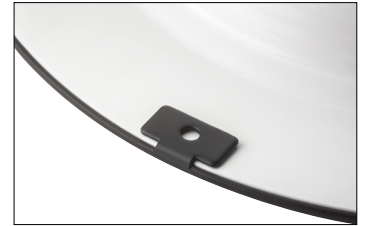
6" Smooth, Matte Black (65SEMB)



6" Smooth, Brush Nickel (65SEBN)



6" Smooth, Oil-Rubbed Bronze (65SEORB)



Press down color finish tabs for post-installation to create final LED 6" module.

ADDITIONAL DATA 65BEMW LED 27K

6"/5" ENERGY DATA	
Lumens	750
Color Temperature	2700K
CRI	90
Lu/Watts	62
Operating temp	-20°C (-4°F) to 40°C (104°F)
EMI/RFI	FCC Title 47 CFR, Part 15, Class B
Sound rating	Class A Standards
Input voltage	120V
Min. power factor	0.99
Input frequency	50/60 Hz
Rated wattage	12.1W
Input power	12.1W
Input current	0.1A

ADDITIONAL DATA 65BEMW/65SEMW LED 30K

6"/5" ENERGY DATA	
Lumens	835
Color Temperature	3000K
CRI	90
Lu/Watts	70
Operating temp	-20°C (-4°F) to 40°C (104°F)
EMI/RFI	FCC Title 47 CFR, Part 15, Class B
Sound rating	Class A Standards
Input voltage	120V
Min. power factor	0.99
Input frequency	50/60 Hz
Rated wattage	11.9W
Input power	11.9W
Input current	0.1A

ADDITIONAL DATA 65BEMW LED 40K

6"/5" ENERGY DATA	
Lumens	845
Color Temperature	4000K
CRI	90
Lu/Watts	71
Operating temp	-20°C (-4°F) to 40°C (104°F)
EMI/RFI	FCC Title 47 CFR, Part 15, Class B
Sound rating	Class A Standards
Input voltage	120V
Min. power factor	0.99
Input frequency	50/60 Hz
Rated wattage	11.9W
Input power	11.9W
Input current	0.1A

5"/6" LED Module

PHOTOMETRICS

Distribution Curve

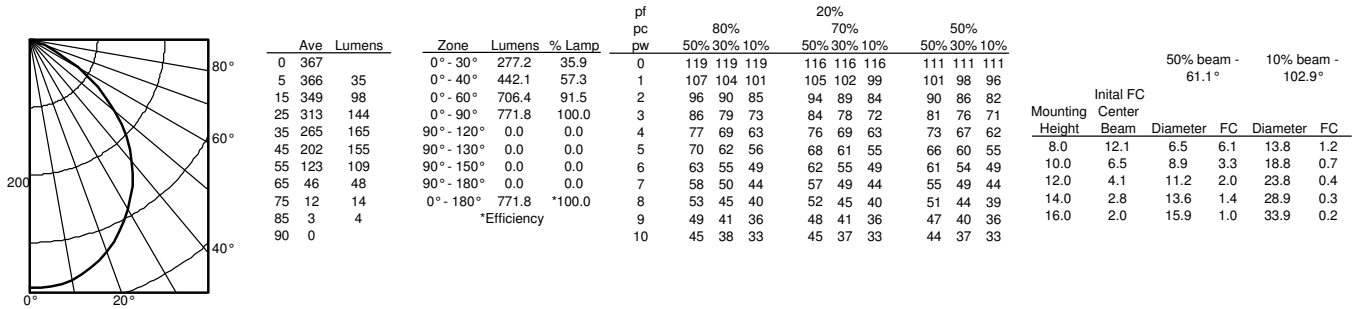
Distribution Data

Output Data

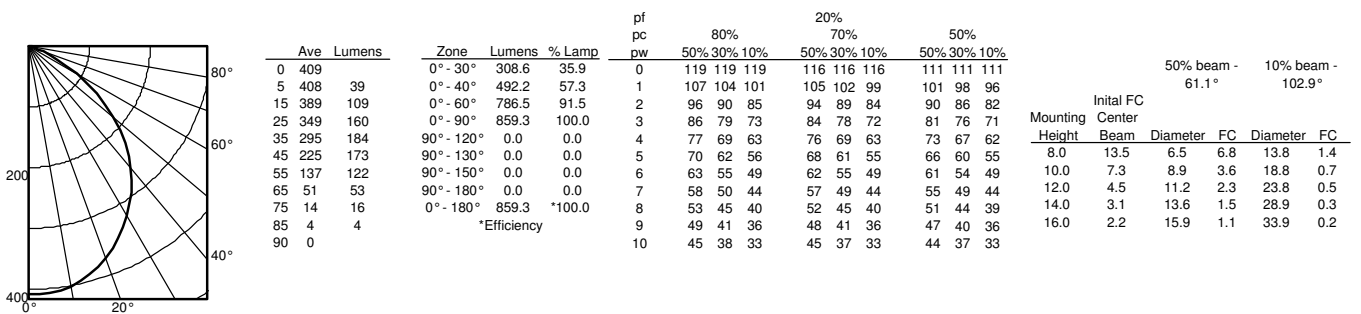
Coefficient of Utilization

Illuminance Data at 30" Above Floor for a Single Luminaire

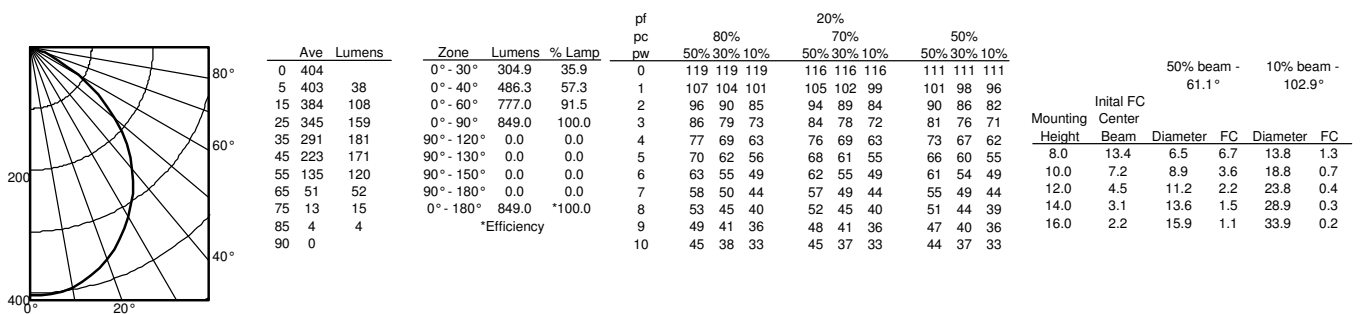
65BEMW LED, 27K, input watts: 11.9, delivered lumens: 772, LM/W = 62, test no. ISF 35429P1, tested in accordance with IESNA LM 79-08



65BEMW LED, 30K, input watts: 11.9, delivered lumens: 859, LM/W = 70, test no. ISF 35429, tested in accordance with IESNA LM 79-08



65BEMW LED, 35K, input watts: 11.9, delivered lumens: 849, LM/W = 71, test no. ISF 35429P2, tested in accordance with IESNA LM 79-08



65BEMW LED, 40K, input watts: 11.9, delivered lumens: 870, LM/W = 71, test no. ISF 35429P3, tested in accordance with IESNA LM 79-08

