

RACK-A-TIERS®

SPECIALTY ELECTRICAL TOOLS



RACK-A-TIERS

- Established 1994 -
FOR ELECTRICIANS • BY ELECTRICIANS •

Expanded Edition



2017-18 CATALOG

CALL or TEXT: 1-888-939-9991

DISCLAIMER: NEW PRODUCTS MAY NOT BE INCLUDED IN PRINTED VERSION OF CATALOG.

Description	Page	Description	Page
6.5 Blank Plate	62	Nylon Fish Tapes	29
AC Sensor	39	OverDrive Bits	47
Aerial Tool Bin	40	Owl Eye Flashlight	38
Aircraft Cable & Wire Crimps	57	Panel Buddy Knockout Kit	53
Alignment Tool	16	Patch Locks	25
All-American Pull Buddies	19	Pencil & Quick Draw Felt Pen	37
Auger - Standard & Tri-Cut	47	Penguin Puller Sr & Jr, The	18
Auger Bit File	47	Phase It Right	24
Bag Pipers	18	Phazer 3	24
Bat Flashlight	38	Picquic Screwdrivers	52
Bend-All	11	Pipe Spinner	15
Better Bend	15	Pipe Vipers	15
Big E-Z	8	Piranhabits - High Speed Steel	46
Bolt Template	57	Plastic Coated Fiberfish	26
Booty Pack	42	Plastic Coated Glowfish	26
Breaker Lok	25	Plate Vise	11
Bulldog Benders, The	10	Plug Master	39
Bumper Balls	47	Plugfones	34
Butt Pouches	33	Pocket-Kart	3
Cable Caddy & Cable Truck	7	Polyester Fish Tape	28
Cable Cart & Cable Cart Data	7	Polyester Fish Tape Cases	29
Cable Glydz	20	Pop Open Garbage Can	43
Caddy Mac	6	ProGrabit	52
Carbide Tipped Steel Cutters	44	ProLock Cord Connector	67
Chip Catcher	49	Proprietary Lock Jacks	25
Combo Tool Belt & Pouches	32	Pull Elbow	55
Copper Wire Stripper Jr.	13	PulLee	19
CP1000 Wire Puller	21	PVC Pipe Pounder	21
Croc's Needle Nose Wire Strippers & Jr.	41	Q-Bit Drywall Hole Cutter	44
Crow's Feet	56	Quattro Flex Auger Bits	46
Current Geek	66	Rack-A-Tiers	1
CWS-1, CWS-2 Copper Wire Strippers	12	Rack-N-Go	9
Dirt Auger System	47	Racky Driver Bits	50-51
Dirt Bag	49	Racky Straps	55
Driller's Dust Bowl	48	Racky Wipes and Drop Sheet	42
Dual Check Non Contact Voltage Tester	39	RAT500 & RAT750	56
Easy Stripper	13	Real Bracket	64
Efergy Products	61	Reel Mac & Spindles	7
Elasco Products	58-59	Reel-End	2
Exploding Garbage Can	43	Reusable Jar and Trar	43
Extendo Nut Driver	17	Rev-Bit	53
EZ Bulb	66	Robertson Screwdrivers	52
EZ Generator Switch	61	Rolgear Screwdriver	52
E-Z Roll & E-Z Roll Multi	8	Ropematic Pro	22
Fiberfish Attachments	27	Rough-In Stick, The	36
Fibersnakes 3/16"	27	RynoStand Wire Caddy	9
Fibersnakes 5/16"	27	Shinmates	40
Fire Fly	38	Shoppe Rocket	39
Fish Heads	23	Sidewinders	60
Flex Flyers	22	Silver Bullet - Rechargeable Flashlight	38
Flex Puller	18	Slammers	64
GD Center Finder	17	Sluggo-Ox	35
Glow Safe 360	38	Snatch Strap	23
GPS LightLock	63	Spool Mac	6
Ground Pounder, The	35	Spool Mule	3
Guide Tool	46	Standard Super Set, Super Set 18	26
Guide-O, The	45	Staple Shark	41
Handi Hoops	55	Steve's Sticky Tags	24
Head Light	38	Stick Bug & Jr.	38
Holdsabit	53	Stick, The	2
Hole-In-One - Hole Cutters	48	Stud Ball	37
Hooker - Wrench Adaptor	11	Stud Buddies Connectors	56
Hoppy Bender, The	14	Support Belt	32
Hot Spots	65	Sure Mark	37
Industrial Cord Connector	67	Suspenders	33
Jack Locks	25	Switch Bits	46
Javelin	45	Temporary Cable Guard	60
Jet Level	39	Thomas Wheeler	4
JK Stud Reels & Floor Units	5	Timberwolf Hand Cleaning Products	42
Knee Pads	33	Tom Two-Way Connector	56
KO Killers	56	Tool Carriers	32
Ladder-Mate	40	Top Hat Cover	62
Laser Plumb Bob	30	TrunkTie	25
Laserline	31	Tug Wise Standard and Deluxe	3
LB Wire Guide	19	Ugly's Electrical Reference Books	66
Level Jacks	56	Ultimate AC Sensor	39
LockHard Bits	51	U-Phase Wire Marker	23
Locknut Wrench, The	16	USB Locks	25
Mag Daddy	54	Van Magnets	42-43
Magnepull	31	V-Cutter	41
Magnespot	30	Wire Hat	4
Magnetic Bit Holder	52	Wire Pod	5
Magnetizer / Demagnetizer	52	Wire Spool Hand Cart	6
Multi-Bit Step Drills	44	Wire Tub	4
Non-Metallic Cable Support System	57	Wire Vortex	16
Nut Blaster XL and XXL	53	X-Dispenser	2

STILL USING MILK CRATES TO DISPENSE YOUR WIRE?



GET THE ONE TOOL THAT DOES IT ALL



RACK-A-TIERS WIRE DISPENSING SYSTEM

The Rack-A-Tiers Wire Dispenser is the one tool that DOES IT ALL. It's no surprise that we've sold hundreds of thousands of them to electricians everywhere. This genius invention is most commonly used for dispensing wire from spools of various sizes. See for yourself it's many other uses!

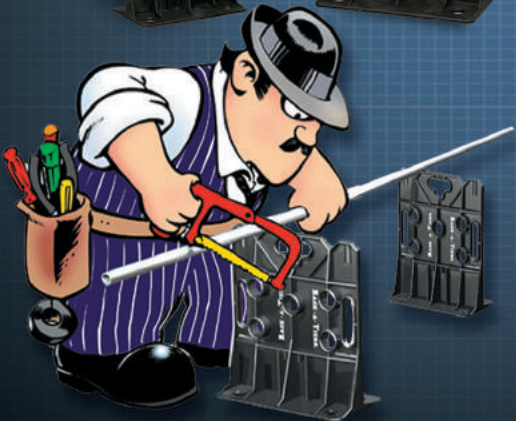


Part# 11455



WATCH A VIDEO

INTERLOCKING PAIRS / VERSATILE
WATERPROOF / RUSTPROOF
RELIABLE / RUGGED
EASY TO SET UP



ONE SIZE RACK-A-TIERS FITS ALL - UP TO: 34" / 0.9M • 330 LBS / 150 KG WIRE REELS

The X-Dispenser

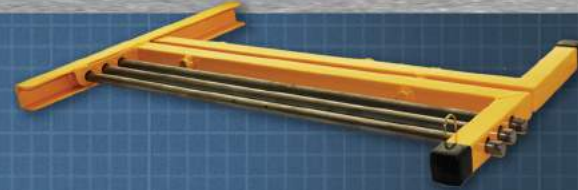
FOLDING WIRE CADDY



FEATURES:

- Folds to 1" wide to easily fit in your van
- Easy to carry: 1" x 23"
- Holds up to six reels of wire

Maximum spool quantity: 6 reels
 500' of #10 AWG wire
 Maximum spool diameter: 8"
 Max spool width: 9"



Part# 11655

THE STICK

STUD MOUNTED WIRE DISPENSER

The Stick installs quickly & easily to any standard stud. Its compact design allows for easy storage once the job is complete.

FEATURES:

Weight capacity: 200 lbs
 Maximum 15" reel width
 Part# 11555



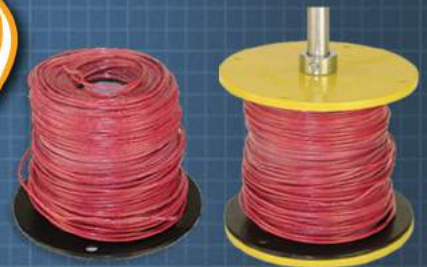
REEL-END

REUSABLE SPOOL REEL TOOL

FEATURES:

- Pays for itself with the first roll saved and it's reusable
- Organize your wire spools with the reel-end wire spool repair kit
- The Reel-End repairs common plastic spools #10 through #18 gauge.
- 6 1/2" Diameter

Part# 17455





THREE EASY STEPS! 1. SCREW TO BASE OF REEL 2. FLIP OVER REEL 3. PULL WIRE!

TUG WISE

STANDARD MODEL (15" x 15")

- 4 screw holes for easy attachment
 - Works with wooden and plastic reels
 - Standard model can handle up to 1000 lbs
- Part# 11931



TUG WISE

Deluxe

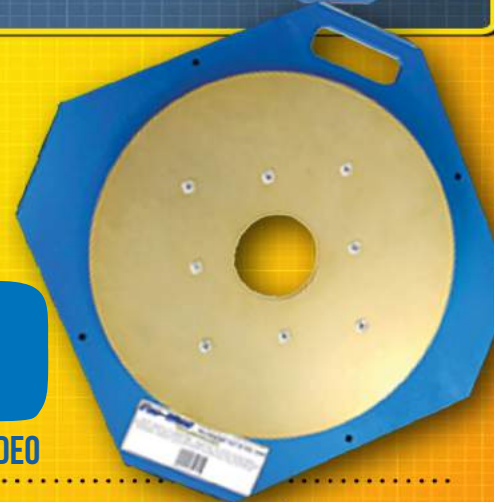


DELUXE MODEL (21.5" X 21.5")

- 4 screw holes for easy attachment
 - Works with wooden and plastic reels
 - Can handle up to 2000 lbs
 - Made of 3/8" thick aluminum alloy and built to handle anything
- Part# 11932



WATCH A VIDEO



Pocket Kart

Save your fingertips! Start using the Pocket Kart to easily carry wire reels of all sizes. Just slip it in and pick it up.



FEATURES:

- Light weight
- Swivelling handle
- Folds up when not in use
- Fits in pouches
- Fits in pockets
- Holds up to 200 lbs



Part# 56000

SPOOL MULE



Part# 40500

The Spool Mule is a simple, yet effective tool for re-spooling wire, rope, and a variety of other cables. Using only a drill, a 3/4" conduit and the Spool Mule kit you can easily roll up coils of wire or transfer cable from broken spools to an intact empty spool.

FEATURES:

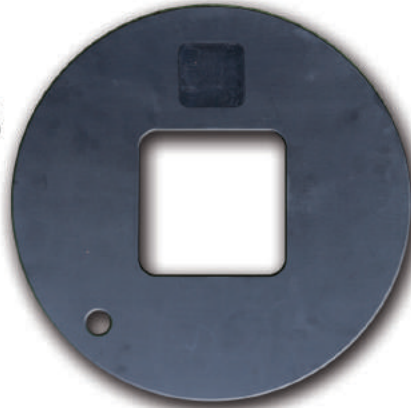
- Kit includes: 3/4" conduit to drill attachment, and (2) Spool Mule brackets
 - Works with any sized spool
- *3/4" Conduit and Rack-A-Tiers Not Included



Wire Hat

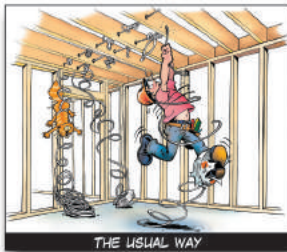
18" - FOR ALL COIL WIRE DISPENSERS

- Keeps wire from unspooling on a stud or floor mounted coil dispenser
- Fits almost all coil dispensers
- Allows you to stack multiple coils quickly onto a single coil dispenser
- No more snags, unwanted unspooling, or time consuming re-spooling
- Patent Pending



Part# 12018

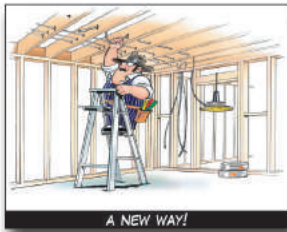
THOMAS WHEELER



This easy-to-hang wire dispenser allows for fast, twist-free NMSC, MC cable or Flex pulling.

FEATURES:

- No maintenance required
- Affordable
- Dependable
- Saves time
- Eliminates waste
- Collapsible
- Hold up to 150 lbs



MFG NOTE

Most coil dispensers are too big, cumbersome and expensive. Not this one. The Thomas Wheeler knocks down and sets up in seconds, hangs on a 2x4, in trusses, above tee bars, or on a ladder. Light, simple, rugged, and it really works.



Part# 19455

WIRE TUB

Part# 18455

The Wire Tub allows you to easily dispense and rewind wire. Don't waste a single foot of wire -- rewind it in the Wire Tub and get ready for installation!

FEATURES:

- 360 degree feed adjusts automatically for easy dispensing
- 3-way adjustable center hub
- Removable top plate has a handle for rewinding wire!
- Large 24" diameter capacity



FOLDABLE STUD REEL

FOLDABLE STUD REELS CREATED BY  JK PRODUCTS

BENEFITS:

- 21" diameter shock absorbing wire tray
- Capacity: 100 lbs
- Grease retaining spindle gives trouble-free service eliminating maintenance over long periods
- Spindle spring adjusts to desirable free spool
- Designed for 14-2, 14-3, 12-2, 12-3 wire and MC wire
- Rotational wire guide allows pulling in any direction
- Raised edges on wire trays prevent wire spill
- Eliminates twisting and kinking of wire
- Constructed of high grade steel, zinc, and aluminum

19FSR24 - Foldable Stud Reel for 2"x4"

19FSR26 - Foldable Stud Reel for 2"x6"

19FSRC - Foldable Stud Reel for 2"x4" and 2"x6"



Combination STUD REEL & FLOOR REEL

BENEFITS:

- Optional 20" or 25.5" shock absorbing wire tray
- Capacity: 100 lbs
- Grease retaining spindle gives trouble-free service eliminating maintenance over long periods
- Spindle spring adjusts to desirable free spool
- Designed for 14-2, 14-3, 12-2, 12-3 wire and MC wire
- Rotational wire guide allows pulling in any direction
- Raised edges on wire trays prevent wire spill
- Eliminates twisting and kinking of wire
- Constructed of high grade steel, zinc, and aluminum
- Combo unit allows mounting on 2x4 and 2x6
- No open walls? No problem! Use it as a floor reel
- Its quick assembly and disassembly give you more time to focus on the job



19CFS20 - 20" Combination Stud Reel
19CFS25 - 25.5" Combination Stud Reel

Heavy Duty STUD REEL



BENEFITS:

- 24" diameter wire tray
- Capacity: 150 lbs
- Grease retaining spindle gives trouble-free service eliminating maintenance over long periods
- Spindle spring adjusts to desirable free spool
- Wire guide also serves as a carrying handle
- Designed for 14-2, 14-3, 12-2, 12-3, 10-2, 10-3 and MC wire
- Rotational wire guide allows pulling in any direction
- Raised edges on wire trays prevent wire spill
- Eliminates twisting and kinking of wire
- Constructed of high grade steel, zinc, and aluminum (Some assembly required)

19HDS24 - 24" Heavy Duty Stud Reel

Heavy Duty FLOOR REEL



BENEFITS:

- 24" diameter wire tray
- Capacity: 150 lbs
- Greased retaining spindle gives trouble-free service eliminating maintenance over long periods
- Spring adjusts to desirable free spool
- Wire guide also serves as a carrying handle
- Designed for 14-2, 14-3, 12-2, 12-3, 10-2, 10-3 and MC wire
- Rotational wire guide allows pulling in any direction
- Raised edges on wire trays prevent wire spill
- Eliminates twisting and kinking of wire
- Constructed of high grade steel, zinc, and aluminum

19HDFR - Heavy Duty Floor Reel

NEED NEW SOLAR PANELS?
CHECK THE BACK PAGE TO
FIND OUR NEW PRODUCT
SEARCHING SERVICE!



WIREPOD



The Wire-Pod is a compact, portable dispenser designed specifically for coils. This handy device will work with NMSC, AC, and Flex coils. With its light-weight design it can easily be stored in any tool bag or work vehicle when not in use.

FEATURES:

- Opens for use and folds away for easy storage
- Weighs less than 3 lbs
- Compatible with NMSC, AC and Flex
- Made in USA



Part# 19955

CADDY MAC 2

Part# 11902



Caddy Mac #2 holds 16 spools of #10 awg or 24 spools of #12 awg. Hinge design allows easy access to all spools for wire dispensing and folds for compact storage.

Spindles swing out to set position for convenient loading of wire spools.

Inner spindles store in special loops which can hold four pieces and will not fall out during transportation.



Number of Spools	Max Spool Dia	Load Capacity	Weight	Width	Additional Features
16-#10 awg. or 24-#12 awg.	7.5 in 19 cm	400 lbs 180 Kg.	72 lb. 33 kg.	28 in 66 cm	Folds up for compact storage.

SPOOL MAC

Part# 11900

*Ships via freight

FEATURES:

- All steel frame construction
- 10" wheels
- Easy set-up for cable dispensing
- No loose pieces
- Compact storage
- Fits through 32" (81 cm) doorways
- 350 lb (160 kg) load capacity
- Priced right – built to last



Max Reel Width	Max Spool Dia	Reel Capacity	Weight	Width	Additional Features
25 in 63.5 cm	40 in 101 cm	350 lbs 160 kg	76 lb. 35 kg.	31.5 in 80 cm	All steel frame, easy set-up for cable dispensing. Compact storage. Ship weight: 150 lbs

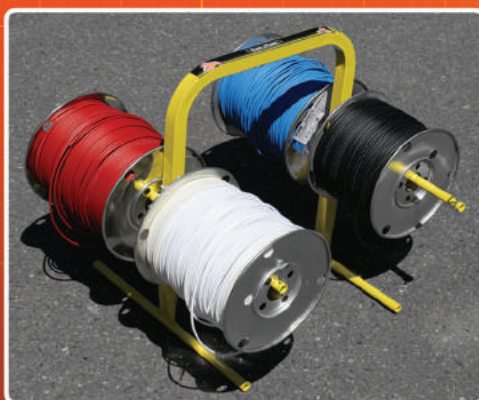


CADDY MAC 1

Part# 11901

- Caddy Mac #1 transports spools on spindles and works as a dolly! Wire is dispensed while laying flat.
- 1/2" solid spindles are attached to cart, no loose pieces. Spindles lock in place, even during transportation.
- Spindles swing out to set position for convenient loading of wire spools.

Number of Spools	Max Spool Dia	Load Capacity	Weight	Width	Additional Features
8-#10 awg. or 12-#12 awg.	7.5 in 19 cm	200 lbs 90 kg	72 lb. 33 kg.	28 in 66 cm	Transports spools on spindles and works as a dolly. Wire is dispensed while laying flat.



WIRE SPOOL HAND CART

Part# 11700

Finish: Yellow powder coated
Dispenses (8) 5" Wide Reels Or
(4) 6 to 10" Wide Reels, Up to 7" Dia.
80 LB capacity

- Height 20"
- Width 15"
- Length 26"
- Number of Spindles 4
- Material: Steel
- 5.2 lbs. / 2.35 kg.



REEL MAC

THE REAL JACK



REEL MAC 60

Screw type telescoping reel jack for 26 to 56" diameter reels.

REEL MAC 70

Screw type telescoping reel jack for 46 to 96" diameter reels.

REEL MAC 80

Heavy duty ratchet drive reel jack for reels up to 90" in diameter. Convenient, detachable ratchet handle stores in base when not in use.
Mfg. Note: Reel Macs sold as singles, buy 2 for a set.



Reel Mac 60
Part# 11860



Reel Mac 70
Part# 11870



Reel Mac 80
Part# 11880

REEL MAC SPINDLES

Used with Reel Mac reel jacks. (Sold separately)



REEL MAC & JACK-A-TIER				
Description	Part #	Reel Diameter	Capacity	Weight
Reel Mac #60	11860	26-56"	2500lb	27lbs
Reel Mac #70	11870	46-96"	2500lb	46lbs
Reel Mac #80	11880	up to 90"	3750lb	99lbs

Corresponding SPINDLES				
Description	Part #	Dimensions	Capacity	Weight
#61	11861	2 3/8" x 62"	5000lb	39lbs
#71	11871	2 3/8" x 76"	5000lb	47lbs
#81	11881	3 1/2" x 100"	7500lb	119lbs

CABLE TRUCK & CABLE CADDY



Part# CC1200 - Cable Caddy

- Constructed of rugged 1" steel tubing.
- Both are 43" tall with 7" rubber wheels.
- Both can accommodate spools up to 16" wide on solid steel 1/2" axles.
- Cable Caddy features 6 axle positions for unlimited versatility.
- Cable Truck has 4 axle positions and a solid steel plate for transporting material.



Part# CT1100 - Cable Truck

CABLE CARTS



- Comes with interchangeable 1" and 3/4" axles.
- Holds up to 30 spools of THHN.
- Vertical racks swing forward for easy loading
- Space for plywood work table on top

Dimensions: 40W x 48L x 48H8" W / Shipping weight: 185 lbs

Part# CC2000 - Cable Cart



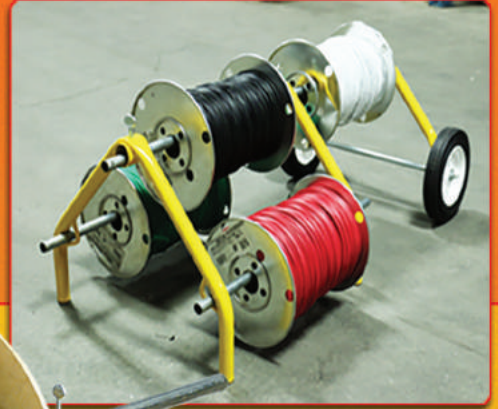
Part# CC2000D - Cable Cart for Data



EZ ROLL

EZ Roll MULTI PART# 55456

GET THE MOST OUT OF YOUR EZ-ROLL WIRE RACK WITH THE NEW EZ-ROLL MULTI. THIS HANDY ADD-ON EXTENDS THE EZ-ROLL'S USE BY ALLOWING MORE WIRE SPOOLS TO BE ADDED, GIVING IT EVEN MORE FUNCTIONALITY & CAPACITY.



The E-Z Roll Wire Rack is the ultra compact and collapsible wheeled wire dispenser. When you're ready to pull wire, wheel the E-Z Roll into position and dispense wire directly from your pipe bender or 1" EMT.

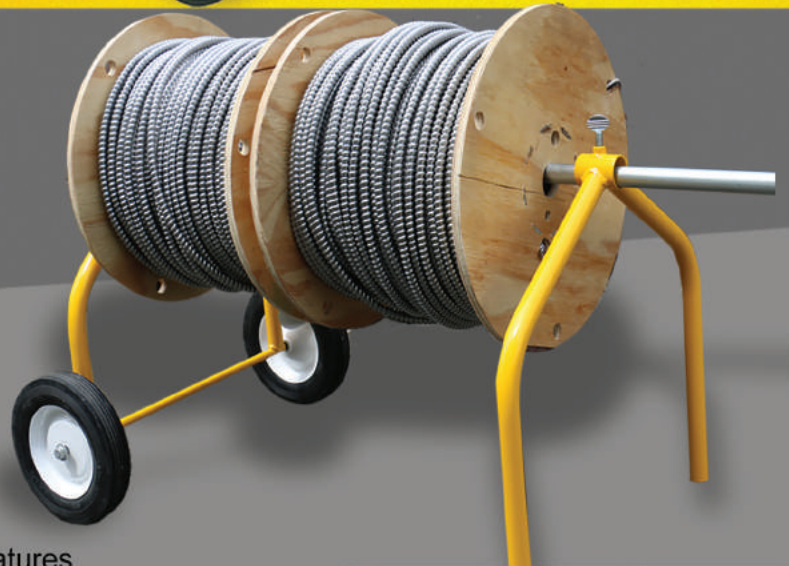
FEATURES:

- 150 lbs load tested
- Rigid steel construction
- Light-weight design
- Compact (fits in any job box)
- Holds reels up to 24"
- Replacement wheels available



***PIPE NOT INCLUDED
Part# 55455**

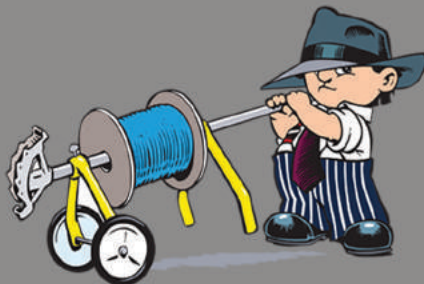
BIG EZ



The Big E-Z utilizes the same design and great features as the original EZ Roll while allowing you to dispense larger wire spools.

FEATURES:

- 300 lbs load tested
- Rigid steel construction
- Light-weight design
- Compact (fits in any job box)
- Holds up to 32"



***PIPE NOT INCLUDED
Part# 55632**



Ryno STAND WIRE CADDY



The RynoStand Wire Caddy is the leading solution for pulling wire from your vehicle on the market today. Leave the giant, heavy wire carts at home, along with the dolly style carts that never hold enough wire. The RynoStand Wire Caddy will hold up to eight spools of 2500' 10 gauge spools or twenty four spools of data wire. Do you have a job that requires multiple sizes? No problem, mix and match wire spools for whatever suits the task at hand. The RynoStand is completely mobile in a standard receiver hitch for any vehicle.

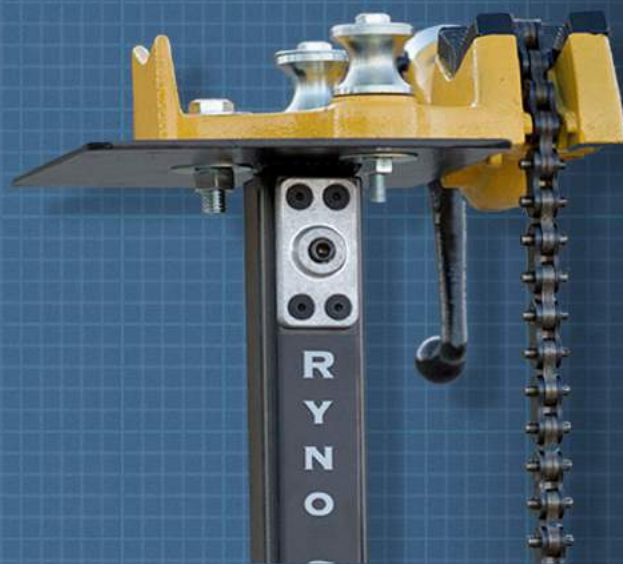
- Holds up to 8 2500' 10 gauge spools or 24 spools of data wire.
- Mix and match spools.
- Fits a standard receiver hitch.

PART#

11500 - HITCH MOUNT WIRE CADDY

11510 - HITCH MOUNT CHAIN VISE

11520 - COMBO WIRE CADDY & VISE



THE RACK-N-GO⁺

GET MOVING WITH THE RACK-N-GO!

Easily mount your Rack-A-Tiers wire dispenser onto the mobile Rack-N-Go framework. The Rack-N-Go expands to support up to a 42" wide spindle.

- 330 lbs load tested
- Locking casters keeps your Racks in place while dispensing
- Roll your wire spools and dispensers easily through a building
- Collapsed 16" x 32"
- Expanded 16" x 52"

Part# 11460



*RACK-A-TIERS
NOT INCLUDED

WIRE BENDING MADE EASY

THE Bulldog Bender



The Bulldog Bender is designed and manufactured by an electrician for electricians. Used for bending wire in panels, disconnects, LBs & wireways. The Bulldog Bender will prove to be a valuable tool to add to your arsenal. As with any specialty tool, with practice you will learn how to use the Bender to its full bending potential.

Features

- The Original and Pro bend up to 500 MCM
- Available in knurled or smooth dowels
- MADE IN THE USA



Hourglass Dowels (smooth)
 Part# 78050 – Up to 500MCM
 Part# 78060 – Up to 750MCM



Part# 78501



Part# 78600



Part# 78500

Part# 78502



Part# 78400

PART #	DESCRIPTION	SIZE
78500	BULLDOG ORIGINAL	UP TO 500 MCM
78501	BULLDOG PRO WITH ADAPTOR	UP TO 500 MCM
78502	BULLDOG 3-PIECE SET (ORIGINAL + PRO)	UP TO 500 MCM
78600	BULLDOG BIG DADDY 3-PIECE SET	UP TO 750 MCM
78400	NEW! BULLDOG PUP	UP TO 4/0

All Bulldogs except the "Pup" are shipped with knurled dowels – smooth dowels available

Bend-All

Save your knuckles by using our Bend-All cable bender! Made with machined aircraft aluminum, this cable bender is extremely strong and durable. It connects to your standard 1/2" ratchet, making cable bending a breeze for you.



Part# 77455
BENDS UP TO 500 MCM



1" Pipe & Conduit

1 1/4" - 1 1/2" Pipe & Conduit

2"x2", 2"x4", 2"x6" Lumber



1"x2" Lumber & 7/8" Unistrut

2" - 2 1/2" Pipe & Conduit & 2" angle Iron & Tubing

1/2" - 3/4" Pipe & Conduit

3" - 4" Pipe Conduit
 4"x4" Lumber & 4" Angle Iron & Tubing



- This one size fits all
- Holds many sizes of pipe, lumber, unistrut, and more
- Contact points do not allow materials to move or spin
- Labor and time saving
- Lightweight and portable

PLATE VISE

Part#13355

I SURE COULD HAVE USED THAT LAST WEEK



Hooker

PIPE WRENCH ADAPTER

The Hooker Pipe Wrench Adaptor lets you turn your Rack-A-Tiers Wire Dispensers into a pipe vise.

FEATURES

- Light weight
- Easy to use
- Fast implementation
- Inexpensive
- To be used with an 18" rigid pipe wrench

Part# 10455



COPPER WIRE STRIPPERS

RECOVER COPPER & ALUMINUM WIRE QUICKLY AND EASILY WITH T

COPPER WIRE STRIPPER 2

The top selling CWS-2 model weighs in at only 45lbs. This wire stripper is compact enough to easily move around, but still has the ability to strip a wide range of wire.

FEATURES:

- Strips from 14 AWG to 750 MCM (1.45" diameter)
- Strips NMSC cable 10-14 AWG
- 1/2 HP Motor
- All aluminum frame
- Hardened one piece blade
- Strips solid core or braided wire
- Blade made from tool steel
- Blade easily re-sharpened
- Fully adjustable wire guide
- Bench model - anti-slip base
- Made in Canada



Part# 47200

COPPER WIRE STRIPPER 1

The CWS-1 is the largest wire stripper available from Rack-A-Tiers. Powered by a 1 HP motor and with the ability to strip up to 3" in diameter, there isn't much this wire stripper can't handle.

FEATURES:

- Strips 14 AWG to up to 3" in diameter
- Strips NMSC cable 10-14 AWG
- 1 HP motor
- All aluminum frame
- Hardened one piece blade
- Strips solid core or braided wire
- Blade made from tool steel
- Blade easily re-sharpened
- Fully adjustable wire guide
- Bench model - anti-slip base



Part# 47100

REPLACEMENT PARTS

CWS-2

- Replacement Blade - Part# 47200B
- Red Feed Guide - Part# 47200G
- Replacement Pulling Wheels - Part# 47200W

CWS-1

- Replacement Blade - Part# 47100B
- Red Feed Guide - Part# 47100G
- Replacement Pulling Wheels - Part# 47100W

STRIPPERS

THESE MONEY MAKING MACHINES!

CWS JR.
SINGLE PASS CUTS
OUTER JACKET AND
1 INNER WIRE

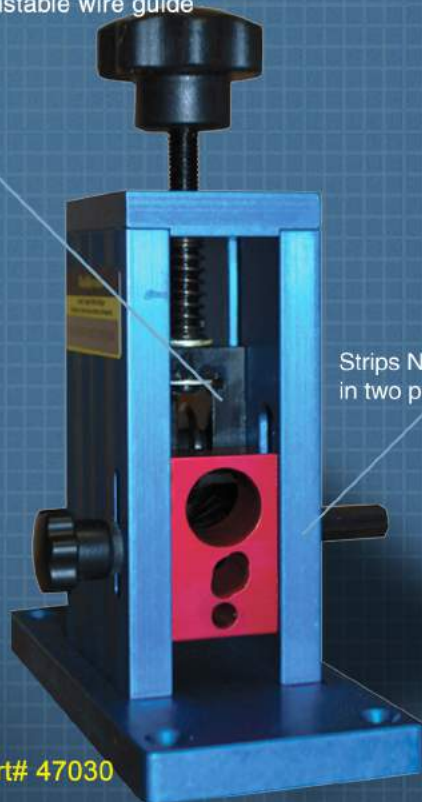


COPPER WIRE STRIPPER JR.

A low cost alternative to the CWS-2, the Copper Wire Stripper Jr. is the money making tool that you need in your warehouse. Driven by a standard power drill, you'll get more than double the money from your scrap wire. It's that simple!

FEATURES:

- MADE IN CANADA
- Wire Range: 14 AWG - 4/0
- Strips NMSC cable 10-14 AWG
- All aluminum frame
- Hardened one piece blade
- Strips solid core or braided wire
- Blade made from tool steel
- Blade easily re-sharpened
- Fully adjustable wire guide



Part# 47030

Strips NMSC cable
in two passes!

EASY STRIPPER

Strip the cover off your scrap wire in minutes with the Easy Stripper! Increase your earnings on every single job you complete.

FEATURES:

- Less than 10% the price of a standard motorized wire stripper
- Strips cable 12 to 4/0
- Powered by any normal power drill
- Way easier and faster than using your knife!
- Environmentally friendly - no burning required
- For Light Use Only



Part# 47020

CWS JR.

Replacement Blade - Part# 47030B
Red Feed Guide - Part# 47030G
Replacement Pulling Wheels - Part# 47030W
Replacement Shaft 47030S

EASY STRIPPER

Replacement Blade 1st Edition- Part# 47020B
Replacement Blade 2nd Edition - Part# 47020B2



HOPPY BENDER

EASY AS 1,2,3!

THE HOPPY BENDER IS HANDS DOWN THE SMARTEST & MOST INNOVATIVE BENDER ON THE MARKET. WE HAVE REVOLUTIONIZED THE WAY ELECTRICIANS BEND PIPE - IT HAS NEVER BEEN EASIER OR FASTER THAN IT IS NOW WITH THE HOPPY BENDER.

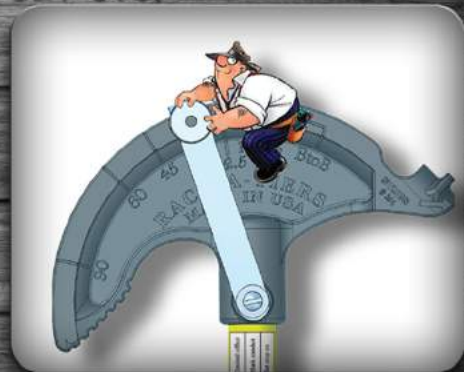
STEP ONE

READ TABLE AND MARK PIPE



STEP TWO

SET STOP



STEP THREE

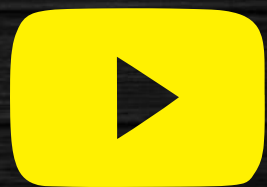
Get Bent



FEATURES:

- A "Stop" attached to the Bender head used to create exact & repeatable bends every time.
- Simplified "Multipliers" engraved into the bender for placing the "Stop" prior to making offsets & four-point saddles.
- Special 22.5 and 45 degree marks engraved into the bender for placement of conduit bend marks as well as standard degree marks for stop placement. Used together for bending three-point saddles without reversing the conduit in the shoe.
- Handy reference charts attached to the handle for locating bend marks.

- Part#
- 57050 - 1/2" Hoppy Bender
 - 57075 - 3/4" Hoppy Bender
 - 57002 - Replacement Handle
 - 57005 - Replacement Thumb Screw
 - 57050LAB - 1/2" Replacement Label
 - 57057 - 1/2" Replacement Swing-Stop
 - 57075LAB - 3/4" Replacement Label
 - 57077 - 3/4" Replacement Swing-Stop



WATCH A VIDEO

Part# 40905 - 1/2" thread
 40907 - 3/4" thread
 40910 - 1" thread

PIPE SPINNER

WRAP A 10 FOOT PIPE IN 10 - 20 SECONDS!

The Pipe Spinner allows you to speed up the process of taping IMC, galvanized conduit or black iron conduit in mil tape for underground applications. Instead of taping the pipe by hand, simply attach The Pipe Spinner to your drill and have your co-worker hold the tape while you spin the pipe.

FEATURES:

- 1/4" drill attachment for quick change drills
- Available in 3 sizes: 1/2", 3/4" and 1"
- Saves time and money



PIPE VIPER



GOLD BEND RIGID PVC PIPE WITHOUT PIPE COLLAPSE OR FRACTURE!



HOW?

Simply insert the spring into the pipe & bend across your knee!

- **NO HEAT GUNS**
- **NO HEAT BLANKETS**
- **FEWER PVC FITTINGS**

MFG NOTE:

Needs to be at least 50 degrees Fahrenheit to work effectively



PART#

- 58050 - 1/2" PVC Spring Bender
- 58075 - 3/4" PVC Spring Bender
- 58100 - 1" PVC Spring Bender
- 58125 - 1 1/4" PVC Spring Bender
- 58150 - 1 1/2" PVC Spring Bender
- 58200 - 2" PVC Spring Bender
- 58250 - 2 1/2" PVC Spring Bender
- 58300 - 3" PVC Spring Bender
- 58350 - 3 1/2" PVC Spring Bender
- 58400 - 4" PVC Spring Bender



**MAKE CONCENTRIC
 90 DEGREE BENDS QUICK
 & EASY WITH**

Better Bend

It's a shoehorn for your pipe bender! No longer do you need to do the time consuming math for bending 90's in multiple size of pipes. The Better Bend comes in a variety of sizes to meet the majority of your pipe bending needs.

Part#'s

- 61050 - 1-1/4" to 1/2"
- 61075 - 1-1/4" to 3/4"
- 61100 - 1-1/4" to 1"
- 60150 - 1" to 1/2"
- 60175 - 1" to 3/4"

Patent Pending



ALIGNMENT TOOL

Utilizing rare earth magnets, the alignment tool easily snaps into place and allows you to align all your 3/4" conduit without the need for a level or measuring tape.



Part# 68075



WIRE VORTEX



If you need an extra pair of hands on the job, try the Wire Vortex. This wire pulling guide fits on 4" square boxes and saves you tons of time when pulling wire.

Part# 40001

FEATURES:

- Protects wire from damage when pulling
- Can pull wire in all 4 directions
- Use for standard (shallow) or deep boxes
- Built with durable, impact-resistant plastic
- Easy to slip on and off

THE LOCKNUT WRENCH



How many locknuts have you bashed with your flat blade screw driver? The Locknut Wrench allows you to tighten locknuts quickly and works great in tight spaces. The patent pending design is available in 3 sizes.

- Offset ends allow access in tight locations. Handle cut away sections are engineered to exact lock nut engagement and rotation
- Singular handle prevents wrist tension
- Clear permanent laser etched markings to ease use
- Comprised of durable steel and strong enough for any job



Available Sizes:
 Part# 79050 - 1/2"
 Part# 79075 - 3/4"
 Part# 79100 - 1"
 Part# 79150 - Locknut Wrench Kit
 (Includes 1/2" & 3/4")

EXTENDO NUT DRIVER



WATCH A VIDEO

The Extendo Nut Driver kit is designed to adapt a standard 1/2" conduit into an extension nut driver for threaded rod. Utilizing the concept of a hollow shank nut driver, the Extendo Nut Driver gives you the flexibility to cut the conduit any length you need to drive the nut up the full length of threaded rod. With this tool on hand, you no longer need to buy multiple size hollow shank nut drivers! Save yourself time and money with this complete extension nut driver kit.

- Kit includes: 7/16", 9/16" sockets, and 1/4" adaptor
- No need to buy multiple hollow shank nut drivers
- Drill attachment designed for 3/8" chuck, will fit quick change drills
- Made from hardened steel
- Adaptable to any length nut driver needed
- Extends up to 10'

Part# NT1050



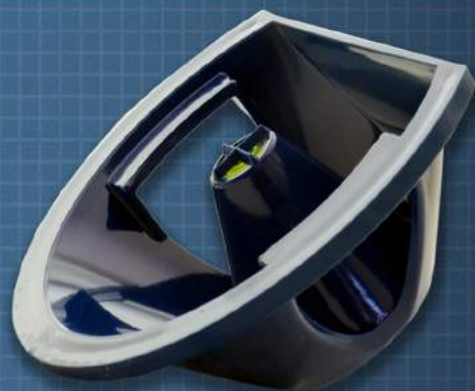
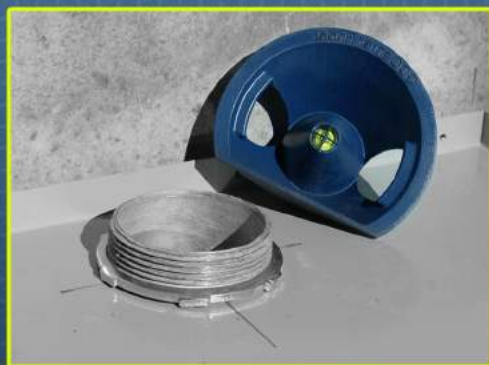
7/16" nut driver for 1/4" rod
9/16" nut driver for 3/8" rod

GDCENTER FINDER



Part# 67500

The GDCenter Finder is a new product that revolutionizes the installation of electrical panels and junction boxes. No need to learn a new installation process. Pull your layout just as you always have, but this time aided with the GDCenter Finder. Your center point will always be level and clearly identified. The days of "close enough" are over. Finally a center tool that works!



IT'S SIMPLE... FOAM LINE CARRIERS ARE EXPENSIVE

BAG PIPERS

ARE CHEAPER AND WORK MUCH BETTER

3 sizes available to fit conduit 1/2" up to 6"



Part#

BP05.125 (sm) 1/2" x 1 1/4" - 10 pack
BP150.40 (med) 1 1/2" x 4" - 5 pack
BP20.60 (lg) 2" x 6" - 3 pack
BP05.600 (multi-pack) 1/2" x 6" - 6 pack

FLEX PULLER



- Flexible metal conduit pulling tool easily screws onto exterior of MC cable & provides a hook to pull cable.
- No more getting caught up in insulation or other obstacles!
- Can be used on #14, #12, & #10 MC Cable!
- Provides a hook to pull cable through hollow & insulated walls and ceilings.



Part# 42620

THE PENGUIN PULLER

The Penguin Puller Sr. and Penguin Puller Jr. are revolutionary new tools designed to aid in easily pulling large cables. The sleek, bullet shape allows for seamless pulling, no tape or crimps required. Utilizing four slots and allen-key set screws, the Penguin Puller Sr. and Penguin Puller Jr. are rated for 4000 lbs. of pull strength. These tools are the cool new kids on the block and here to stay when it comes to pulling wire!

Part#

69700 - Penguin Puller Sr. For Pipe 2 1/2" and Larger
69705 - Penguin Puller Jr. For Pipe 2" and Larger



Features:

- 4000 LBS. MAX PULL STRENGTH
- Penguin Puller Sr. - 3/0 to 350 MCM Copper or Aluminum
- Penguin Puller Jr. - 2/0 to 4/0 Copper or Aluminum
- No tape, no crimps, no mess
- Reusable

THE ALL AMERICAN PULL BUDDY SHOEHORNS FOR YOUR WIRE



FEATURES:

- Reduces Time and Labor
- Reduces the chance of damaging wires
- Turns wire pulling into a one person job

Part#

- 42000 - Multi-Pack (6 pack / 2 of each)
- 42050 - 1/2" Blue (10 Pack)
- 42075 - 3/4" Red (10 Pack)
- 42100 - 1" White (10 Pack)

LB Wire Guide

THE LB WIRE GUIDE IS A "SHOE HORN" FOR 2" LB'S.



[WATCH A VIDEO](#)

FEATURES:

- ASSISTS WHILE WORKING ON YOUR OWN
- FOR PVC LB FITTINGS AND IS ADAPTABLE TO MOST METAL LB'S
- FAST FOR ONE PERSON CONDUCTOR INSTALLATIONS
- INSTALLS IN TWO POSITIONS TO FIT BOTH "ENDS" OF THE LB

MFG NOTE

TWO HUNDRED AMP SERVICES (3/0 WIRE) CAN BE HARD ON YOUR KNUCKLES. THE LB WIRE GUIDE PUTS THE WIRE IN THE PIPE AND LEAVES THE SKIN ON YOUR FINGERS.

Part# 42200



PullLee

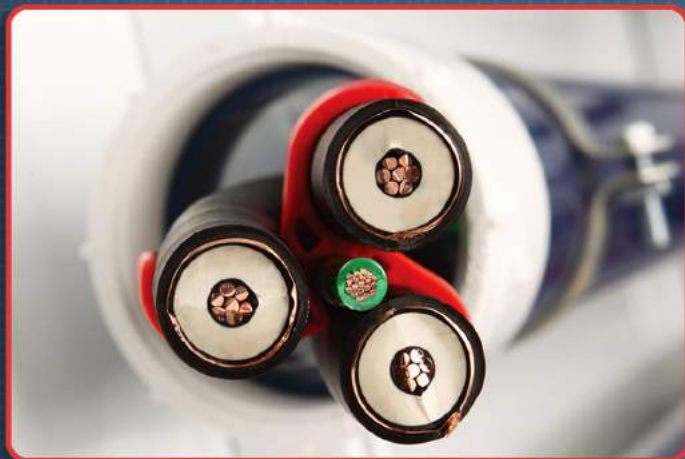
This slim, but strong, steel roller fits in all standard 4x4 boxes for smooth and controlled wire pulling. It effortlessly guides wire and cable into the feeding end of the job at the correct angle, eliminating the need for a second person to manually guide the feeding end.

Features

- Spring loaded tips keep it locked in place
- Stainless steel design for maximum strength

Part# 41100

Cable Glydz



Why Cable Glydz?

Cable Glydz create a level playing field for medium and high voltage cable installation no matter the cable manufacturer.



To find your Cable Glydz part number:

1. Determine the outside diameter in inches of the individual conductor
2. Select part number to go with the appropriate wire size range
3. Make sure the conduit you are pulling through is large enough for that part number

To determine how many Cable Glydz you need, take the length of your pull and divide the length in inches by 18.

Example:

OD of wire: .87"

Part#: 3-8590

Conduit required: 3"

Length of run: 220'

Quantity needed: 147



MV & HV Model's
 Range .60 - .65
 Range .65 - .70
 Range .70 - .75
 Range .75 - .80
 Range .80 - .85
 Range .85 - .90
 Range .90 - .95
 Range .95 - 1.00
 Range 1.00 - 1.05
 Range 1.05 - 1.10
 Range 1.10 - 1.15
 Range 1.15 - 1.20
 Range 1.20 - 1.25
 Range 1.25 - 1.30

Part Number
 3-6065
 3-6570
 3-7075
 3-7580
 3-8085
 3-8590
 3-9095
 3-95100
 3-100105
 3-105110
 3-110115
 3-115120
 3-120125
 3-125130

Cond. Size
 2.5"
 2.5"
 2.5"
 2.5"
 2.5"
 3"
 3"
 3"
 3"
 3.5"
 3.5"
 3.5"
 3.5"
 4"

MV & HV Model's
 Range 1.30 - 1.35
 Range 1.35 - 1.40
 Range 1.40 - 1.45
 Range 1.45 - 1.50
 Range 1.50 - 1.55
 Range 1.55 - 1.60
 Range 1.60 - 1.65
 Range 1.65 - 1.70
 Range 1.70 - 1.75
 Range 1.75 - 1.80
 Range 1.80 - 1.85
 Range 1.85 - 1.90
 Range 1.90 - 1.95
 Range 1.95 - 2.00

Part Number
 3-130135
 3-135140
 3-140145
 3-145150
 3-150155
 3-155160
 3-160165
 3-165170
 3-170175
 3-175180
 3-180185
 3-185190
 3-190195
 3-195200

Cond. Size
 4"
 4"
 4"
 5"
 5"
 5"
 5"
 5"
 5"
 5"
 6"
 6"
 6"
 6"

CP1000 WIRE PULLER

Save time and money with the CP1000. Today 80% of all project wire being pulled is branch circuit wire. Up to now there has only been one time-consuming and physically demanding method -- hand pulling. The CP1000 takes the time consuming process of hand pulling and reduces it by 75-80%.

The CP1000 made from 100% billet aluminum is a safer, faster, more efficient tool for pulling branch circuit wire and line materials. It is flexible and easy to use on a wide range of job site applications:

- Electrical junction boxes
- Gutters
- Switchgear
- Sub panels
- Light poles
- Underground and overhead conduits



Part# 69800

PVC Pipe Pounder

Crafted to perfection

Part# 67175



The PVC Pipe Pounder is a quick and easy method for connecting multiple sizes of PVC.

FASTER

Faster connection during gluing process which ensures the pipe is properly installed. You will meet deadlines and make more profit.

EFFICIENT

No more breaking pieces of wood and wasting time in finding another! Now you know you can get the job done efficiently without set backs.

SAFER!

Cut back on jobsite injuries caused by broken wood planks! The PVC Pipe Pounder is safer to use.





ROPEMATIC PRO

THE SMART WAY TO PULL



**STOP HURTING YOUR HANDS AND WRISTS.
STOP BREAKING EXPENSIVE FISH TAPE.**

PULL ROPE AND FISH TAPE THE SMART WAY WITH THE ROPEMATIC.

The Ropematic has a durable latch that grabs rope or fish tape when you are pulling down. As you pull back up, the latch loosens and easily slides up the rope or fish tape. You can then pull down again and the Ropematic will grab the rope or fish tape, pulling it down.

PART# 42400

FLEX FLYER

FEATURING "QUICK CHANGE SWIVEL HEAD"

The Flex Flyer features a quick change swivel head that installs on the end of a fish tape in 20 seconds by twisting the fish tape with 2 pairs of pliers. The loop technology allows the leader to move smoothly through all types of conduit including flex. The standard 1/4" - 28 threads allow for other types of leaders to be attached to the quick change base.



- Installs in under 20 seconds using two pairs of pliers, no torch needed
- Flies through those tough conduit runs
- Loop technology allows leader to glide through flex as well as all other types of conduit
- Loops allow leader to be snagged from other end of conduit run when necessary
- Standard 1/4"-28 threads allow for the use of other types of leaders on quick change base

Part#
69050 - Flex Flyer 1/2"
69075 - Flex Flyer 3/4"



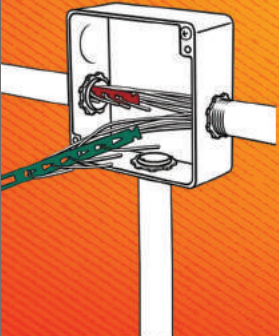
Snatch Straps

Use the Snatch Strap for fast attachment on conduit pulls. No stripping or taping required!

- Pull more conductors with less effort
- Can be chained together
- Color coded for easy circuit and phase identification

MFG Note:

Snatch Strap handles #22 - #12 AWG. If additional wires are required simply add additional straps.



FISH-HEADS

Tired of fish tapes getting snagged or breaking? Try Fish Heads to fix and improve your broken fish tape end.

FEATURES:

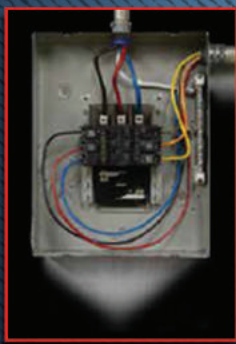
- Complete spherical head reduces the chance of getting stuck
- Tapered back end
- Tested 500+ pounds
- Reusable



PHASE WIRE MARKER

Quickly and conveniently use the UPhase wire marker to color cords and wires for fast and easy organization

- Electrical Panels
- Color Coding Wire
- Identifying Wiring Circuits
- CAT-5 Ethernet Cable
- Audio/Video Cable
- HDMI Cable
- Automotive wire



BEFORE

AFTER



Part #

- 52490BK – Black - 4 pack
- 52490BL – Blue - 4 pack
- 52490RD – Red - 4 pack
- 52490WT – White - 4 pack
- 52490GR – Green - 4 pack
- 52491 - 4 pack Kit (blue, red, white, green)
- 52493 - 4 pack Kit (gray, orange, yellow, brown)
- 52492 - Replacement tip

PHASE IT RIGHT

PRE-PRINTED COLOR WIRE MARKERS

Phase marking is more than just a numbers game. Get it right with Rack-A-Tiers' colored phase marking tags

#52600 - Low Voltage Sticker Booklets
#1-45 (BK, RD, BL)

52615 - Low Voltage Sticker Booklets
#46-90 (BK, RD, BL)

#52630 - High Voltage Sticker Booklets
#1-45 (BR, OR, YW)

#52645 - High Voltage Sticker Booklets
#46-90 (BR, OR, YW)

RACK-A-TIERS
SPECIALTY ELECTRICAL TOOLS

PHASE IT RIGHT
PRE-PRINTED COLOR WIRE MARKERS

PHASE MARKING IS MORE THAN JUST A NUMBERS GAME. GET IT RIGHT WITH RACK-A-TIERS' COLORED PHASE MARKING TAGS

#46-90
(BLACK, RED, BLUE)



Steve's Sticky Tags all-purpose self-laminating armored cable markers.

- Durable
- Waterproof
- Designed specifically for B/X and MC armored cable
- Includes permanent marker
- 100 Tags per book
- Ultra-Flexible

Part# 52500

DURABLE WATERPROOF ULTRA-FLEXIBLE



PHAZER III

STICK IT WHERE YOU WANT

Part# 52700



- Durable Clear Coat**
- Easy To Read Lettering**
- Aggressive Adhesive**

The Phazer 3 sticker allows electricians on the job to associate the correct circuit with the corresponding number accurately. The Phazer 3 reference guide, which fits conveniently on your tape measure, will ensure every job is completed as quick as possible, saving time and money.

Jack Locks Part# 75045

Jack Locks can give you the extra physical security that you need. The Jack Locks can be used in a variety of locations. For example, blocking unused ports on a switch to prevent unauthorized access. The RJ45 Jack Lock can prevent damage of an upgrade port on a wide range of devices. POS customers use this device to add security to their network and help prevent tampering with credit card machines. (PCI COMPLIANT)



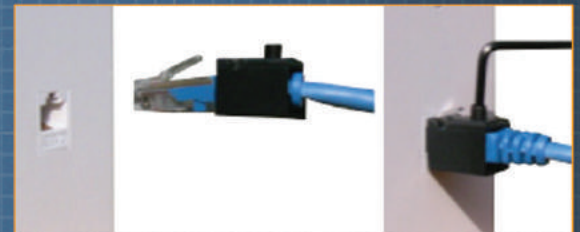
USB Locks Part # 75050

The patent pending USB Locks are a lockable port blocker. Install them without any tools, just slide the USB port block fully into the port. To remove the USB port blocker, insert the tool provided slide it towards the center of the block out device and then pull towards you.



Patch Locks Part# 75055

The RJ Patch Cord Lock works on patch cords that don't have a strain relief, as well as ones that do. To attach the lock to the modular plug, first slide the lock over the patch cord. Then insert the patch cord into the RJ45 jack. Next, slide the lock forward under the tab. Finally, secure the two outer set screws down onto the modular plug.



Proprietary Jack Locks Part# 75060

The RJ45JLP-10X are Jack Locks that are color coded with their own key. For example, only the red key will work on the red locks. These are great for networks to identify the ports. Red could mean bad port, yellow could be printers and green could identify a good port but you need to contact head of IT before adding device. Jack Locks don't just stop unauthorized use of ports but can help organize your network.



BREAKER LOK

SECURE ANY CIRCUIT BREAKER IN THE ON POSITION WITH EASE!

- Universal lock fits most breakers & standard toggle switches.
- Set screw and rigid leg prevents lock from slipping off breaker.
- Reusable & corrosion resistant.



Part# 75000 - 5 Pack

TrunkTie



Part # 75065


What is Trunktie?

Trunkties are a simple solution designed to hold, hang, or tag things in position relative to an unpopulated port. Their most common use is to hold tags for identifying network ports, but our customers have found countless creative applications for their use.

How it works

Trunkties plug into an unused port, providing a flexible cable that secures into a multipurpose loop. That's all, it's that simple.



Our Fiberfish and Glowfish rods with a durable plastic coating offer the same  great performance with no risk of splintering or slivering of the fiberglass.

PLASTIC COATED GLOWFISH

5/32" Diameter luminous rods

Super flexible glow-in-the-dark rods with our new plastic coating process. Great for tight jobs. The handy clear carry case keeps them constantly "charged" and ready.

KITS

GLF407 Glowfish Kit contains: 1 - 6' B/F, 4 - 6' M/F w/ tips
GLF408 3' Glowfish Kit contains: 1 - 3' B/F, 7- 3' M/F rods w/ tips

REPLACEMENT RODS

GLF403 6' Bullnose/Bullnose (B/B) rod
GLF406 6' Bullnose/Female (B/F) rod
GLF410 6' Male/Female (M/F) rod
GLF414 3' Bullnose/Female (B/F) rod
GLF415 3' Male/Female (M/F) rod



PLASTIC COATED FIBERFISH II

3/16" Diameter orange rods

The most versatile of the Fiberfish with our new plastic coating process. Perfect for a wide range of installation situations and challenges.

KITS

PCF207 Fiberfish Kit contains: 1 - 6' B/F, 4 - 6' M/F w/ tips
PCF208 3' Fiberfish Kit contains: 1 - 3' B/F, 7- 3' M/F rods w/ tips
PCF230 "FourPack" contains: 1 - 3' B/F, 3 - 3' M/F, tip, and FishHook in vinyl pouch

REPLACEMENT RODS

PCF206 6' Bullnose/Female (B/F) rod
PCF210 6' Male/Female (M/F) rod
PCF214 3' Bullnose/Female (B/F) rod
PCF215 3' Male/Female (M/F) rod



DELUXE SET 15

Part# SS15



INCLUDES:

4 x 3/16" Orange fiberfish Rods
1 x 5/32" Glow In The Dark Fiberfish Rod
1 Flexfish Leader
1 Fish Hook
1 Pull Ring
1 Bull Nose Tip
1 Carrying Case

DELUXE SET 18

Part# SS18



INCLUDES:

1 x 1/4" x 36" Yellow fiberfish Rod
3 x 3/16" Orange Fiberfish Rod
2 x 5/32" Glow In The Dark Fiberfish Rod
1 Flexfish Leader
1 Fish Hook
1 Pull Ring
1 Bull Nose Tip
1 Carrying Case



MISC. ATTACHMENTS

- FishHook - Use to retrieve or snag wire & cable.
- Directional Tool - Offset bend helps guide the Fiberfish around obstructions in walls.
- Magnet Head - Used with Fish Finder or to catch the ball chain inside wall cavities.
- Pull Ring - Used to attach multiple wires for larger pulls.
- Ball Chain - Attach to Fiberfish for interior wall pulls - can be retrieved through small access hole in wall with magnet or Flex-Fish.
- Wisp Head - Use over suspended ceilings — won't catch on T-bars.
- Screw Tip - Screws into the end of small communication wires for faster and easier pulls.

ATTACHMENT KIT

CONTAINS:

- FishHook
- Directional Tool
- Magnet Head
- Pull Ring
- Ball Chain
- 2 Replacement tips
- Stored in convenient vinyl pouch



FIB520 Universal Attachment Kit for ALL (3/16" rods) & (5/32" rods)



LED TIP ATTACHMENTS

Add the LED tip to your Fiberfish Rods to see exactly where your Rod is going.

LED Tip Part# FIB555,
for 5/32, 3/16 and 1/4 Rods



FIBERSNAKES

Fibersnake, Fishtapes and Rodders are designed for use in conduit. The reinforced fiberglass core is jacketed with a plastic coating for superior flexibility and durability. Non-conductive, so it's great for conduit with existing wiring. Rust-proof brass tips and fittings.

3/16" FIBERSNAKE

FIBT50	Fibersnake	RT50	50	Replacement Rodder only
FIBT100	Fibersnake	RT100	100	Replacement Rodder only
FIBT150	Fibersnake	RT150	150	Replacement Rodder only
FIBT200	Fibersnake	RT200	200	Replacement Rodder only
FIBT250	Fibersnake	RT250	250	Replacement Rodder only
FIBT300	Fibersnake	RT300	300	Replacement Rodder only

1/4" FIBERSNAKE

FIBR200	200' Fibersnake	RR200	200'	Replacement Rodder only
FIBR250	250' Fibersnake	RR250	250'	Replacement Rodder only
FIBR300	300' Fibersnake	RR300	300'	Replacement Rodder only
FIBR350	350' Fibersnake	RR350	350'	Replacement Rodder only
FIBR400	400' Fibersnake	RR400	400'	Replacement Rodder only
FIBR450	450' Fibersnake	RR450	450'	Replacement Rodder only
FIBR500	500' Fibersnake	RR500	500'	Replacement Rodder only
FIBR550	550' Fibersnake	RR550	550'	Replacement Rodder only
FIBR600	600' Fibersnake	RR600	600'	Replacement Rodder only

5/16" FIBERSNAKE

Fibersnakes and Replacement Rodders are available in 400'-1000'

Fibersnakes Part# FIBL400-FIBL1000

Replacement Rodder Part# RL400-RL1000

Rodder Diameter	Recommended conduit sizes (in inches)	Maximum Length
(FIBT) 3/16"	½, ¾, 1, 1¼	300'
(FIBR) ¼"	1, 1¼, 1½, 2, 2½	600'
(FIBL) 5/16"	1½, 2, 2½, 3, 3½, 4	1000'

MFG. NOTE: 5/16" Fibersnake cages include wheels, 3/16" and 1/4" do not.

POLYESTER FISH TAPE



4 CORE GREEN & BLACK POLYESTER FISH TAPE: 100FT (30M)

THE 4 CORE TWISTED POLYESTER FISH TAPE IS THE STRONGEST AND MOST POWERFUL PRODUCT SUITABLE FOR LONG DISTANCE ELECTRICAL WORK.
PART# EP430G



3 CORE RED & BLACK POLYESTER FISH TAPE: 100FT (30M)

3 CORE TWISTED POLYESTER FISH TAPE FOR INCREASED STRENGTH AND FLEXIBILITY.
PART# EP330R



2 CORE YELLOW & BLACK POLYESTER FISH TAPE: 165FT (50M)

2 CORE TWISTED POLYESTER FISH TAPE COATED FOR REDUCED FRICTION.
PART# EP250Y



1 CORE BLACK POLYESTER FISH TAPE: 100FT (30M)

SINGLE CORE TWISTED POLYESTER FISH TAPE FOR A LIGHT, ECONOMICAL OPTION.
PART# EP130B



POLYESTER FISH TAPE CASES

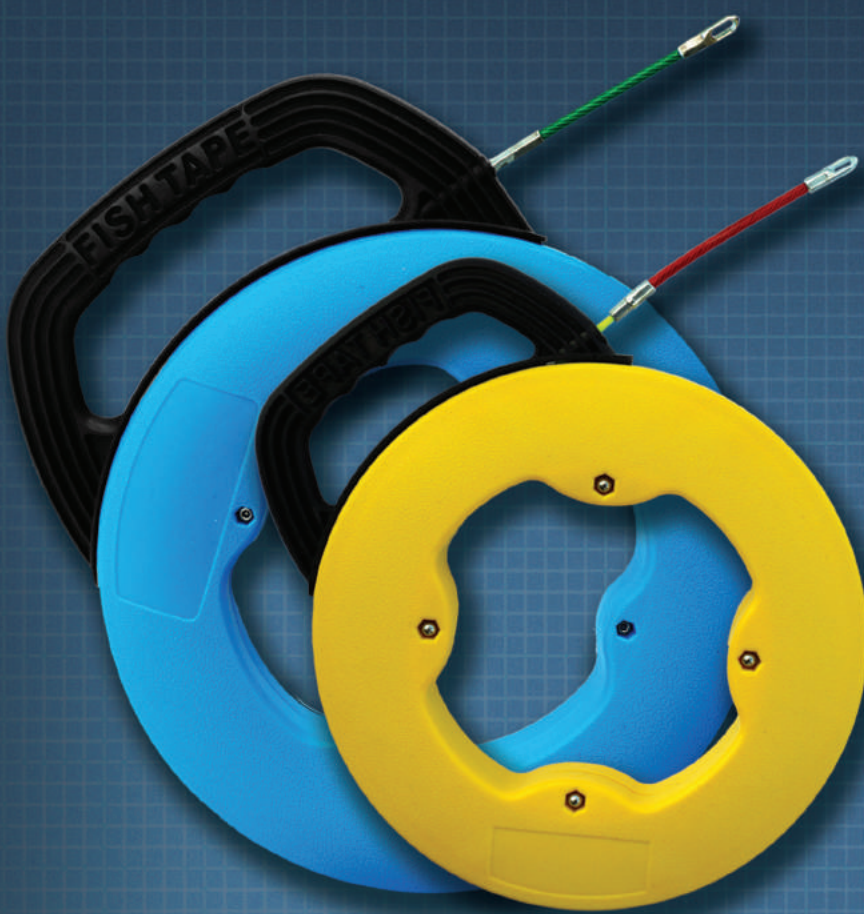
THESE NON-CONDUCTIVE, LIGHT-WEIGHT FISH TAPE CASES ARE PERFECT FOR LINE OR LOW VOLTAGE FISHING. AVAILABLE IN SINGLE OR 3 STRAND DEPENDING ON THE JOB, THEY ARE PERFECT FOR IN CONDUIT PULLS.

Part# EP515C

1 strand in Yellow Case 49.2' (15m)

Part# EP530C

3 strands in Blue Case 98.4' (30m)



NYLON FISH TAPE

NYLON FISH TAPE 4MM WITH M5 THREADED INTERCHANGEABLE TERMINALS. FLEXIBLE STARTING SPINNER WITH EYELET AND EYELET ON THE BACK SIDE OF THE FISH TAPE.

AVAILABLE LENGTHS: 15M (49FT) & 30M (98FT)

Part# EN050.BK

Part# EN098.BK



NYLON FISH TAPE PLUS

NYLON "PLUS" FISH TAPES 4MM, WITH M5 THREADED BRONZE INTERCHANGEABLE TERMINALS. FLEXIBLE METALLIC STARTING SPINNER WITH EYELET AND EYELET ON THE BACK SIDE OF THE FISH TAPE.

- Reinforced eyelet with special formation which facilitates excellent tying of cables
- Available lengths: 15M (49FT) & 20M (65FT)

Part# EN050.OR

Part# EN065.OR



COMBO TOOL BELT

INCLUDES:

Molded support belt, Electrician's tool pouch, Large 9 pocket tool pouch, Hammer holster and tape holder

FEATURES:

- Reinforced with bar-tack stitching & heavy duty metal rivets
- 1250 denier DuraTek fabric with high density nylon webbing around pocket openings.

Part#

43241 - Small Combo
43242 - Medium Combo
43243 - Large Combo
43244 - X-Large Combo
43245 - XX-Large Combo
43246 - XXX-Large Combo
43201 - Electrician's Tool Pouch
43202 - Lrg 9 Pocket Tool Pouch



MOLDED AIR-CHANNEL SUPPORT BELT

43401 - Small Belt
43402 - Medium Belt
43403 - Large Belt
43404 - X-Large Belt
43409 - XX-Large Belt
43410 - XXX-Large Belt

FEATURES:

- The first ever 'Molded Air-Channel Tool Belt' that offers incredible comfort, support, & ventilation for your back.
- The high density nylon 'Web Core' inside the padded belt provides strength to stitching & stress points.
- Metal rings are stitched to the belt's web core with high-density nylon webbing that provides the strongest way possible to attach suspenders.
- All stress points are reinforced with 'bar-tack' stitching along with heavy duty rivets.
- Double metal buckles that add strength and dependability.
- All of our belts and bags are made from double layered 1250 denier DuraTek fabric.
- Available in sizes from 26" to 54"



SMALL 25 POCKET TRAY TOOL CARRIER

FEATURES:

- 16 exterior pockets
- 9 interior compartments and pockets
- 1 qty 7" x 5.5" 12 compartment plastic tray
- 10.5" W x 10.5" L x 8" H
- Tape holder
- Includes shoulder strap

Part# 43707



LARGE 44 POCKET TRAY TOOL CARRIER

FEATURES:

- 29 exterior pockets
- 1 large clear pocket
- 14 interior compartments and pockets
- 2 qty 7" x 5.5" twelve compartment plastic tray
- Tape holder
- Includes shoulder strap

Part# 43706



MOLDED AIR-CHANNEL SUSPENDERS

Part# 43606

INCLUDES:

- Adjustable thick molded foam shoulder pads
- 2" wide adjustable nylon straps
- Leather crossover divider
- Heavy duty spring hooks that attach to the rings on the molded Air-Channel belts

FEATURES:

Our popular padded suspenders easily clip onto the sturdy metal rings that are built into our tool belts. The padded shoulder straps make these the ideal set of suspenders for your tool belt rig.



GEL IMPLANTED KNEE PADS



FEATURES:

- Sturdy
- Comfortable
- Hook & Loop Straps

Part# 66455



BUTT POUCH POCKET TOOL HOLDERS

FEATURES:

- Quick to put on & COMFORTABLE!
- Tool pouches fit in your pocket
- Made of ballistic nylon
- Lightweight & durable



GRANDE

Part# 43095



PAPA GRANDE

Part# 43100



MINI

Part# 43015

LASER PLUMB BOB

Looking for a better way to lay out complex ceiling and high bays? The Laser Plumb Bob, self leveling vertical laser from Rack-A-Tiers is the answer!

FEATURES:

- Solid brass construction
- Factory aligned laser module calibrated to precise 0.15 accuracy
- Magnetic damping for quick stabilization
- Self leveling and aligning (vertically)
- Durable plastic carry case
- Battery included



Before



After



MFG NOTE:

For all commercial, industrial, or residential installations. Great for laying out ceiling lights.

PART#

88455 -LASER PLUMB BOB

REPLACEMENT PARTS

88-ARM - LASER PLUMB BOB ARM WITH MAGNET ATTACHED

88-BASE - LASER PLUMB BOB BASE

88-BAT - LASER PLUMB BOB BATTERY CR123A



The Magnespot is a reference point locator that gives users complete self-assurance before drilling, cutting, or any other task you may previously had to do blindly.



Place the Magnespot Transmitter on the wall, ceiling, or floor that you need to drill. On the other side hold the Receiver in the general direction of the transmitter, the red LED arrows on the Receiver will indicate to you which direction to move.

When all 4 arrows illuminate, the Transmitter and Receiver are lined up within a 1/2 inch.



LASERLINE

REDUCE EFFORT IMPROVE PRODUCTION CUT LABOR EXPENSE

Tired of wiggling through a crawl space just to drag your wire to the other end? Fire the Laserline, attach your wire, then walk around and pull it across while standing. It's that easy!

The CO2 powered gun shoots a foam dart with a line attached to it up to 200ft. Stop climbing your ladder and moving it every ten feet to pull your wire across a t-bar ceiling. Pull your wire the entire distance in one shot with the Laserline!



FEATURES:

- Accurately install a pull line up to 200ft
- Cuts labor costs and improves production
- Ability to span over heavy and hard to move objects found in many commercial structures
- Replacement line and darts available.

MFG NOTE

- The Laserline Kit includes 1 gun,
- 2 spools of line (1200 ft each)
- 2 darts and 2 generic CO2 cartridges

PART

- 83000 - LASERLINE KIT
- 83001 - REPLACEMENT LINE 2-1200FT
- 83003 - DART 3 PACK



Part# 42800

Extremely powerful, yet delicate, magnetic wire snake for fishing wire through walls. It even works through insulation! This new version has a much stronger magnet and a smoother rolling surface.



FEATURES:

- Hand roller with powerful magnet & smooth finish to avoid damaging walls
- 6' ball chain included
- Flexible leader with magnet head
- Also makes a great stud finder

MFG NOTE

Any fiberfish can easily be threaded onto the magnet head. This will help push through dense insulation and guide through fire-block drill holes.



WATCH A VIDEO

PLUGFONES

WHERE EAR PLUGS MEET EARBUDS

AT WORK: Ear plugs certified to the ANSI noise reduction standards up to 30 dB. Head phone volume limiting technology that keeps the volume level of the Plugfones speakers at or below 82 dB per OSHA standards. Built with Tuff Cord tear resistant wires.

AT PLAY: Wireless Bluetooth battery lasts up to 12 hours of play, USB rechargeable. Comfortable design that won't fall out like regular ear buds.

MFG NOTE: Replaceable tips available for all sets in 10 or 100 packs, please visit rack-a-tiers.com for more details.

INDUSTRIAL GRADE WIRED & WIRELESS BLUETOOTH PROTECTIVE EARPLUGS & HEADPHONES ALL-IN-ONE.

Compliant with ANSI S3.19-1974 Noise Reduction Standards
WorkSafe: Volume Limiting Technology - Limits audio input to 85dB, enhances situational awareness
Bluetooth wireless technology
Never out battery - Up to 12 Hours of Play
Fast Charge - 5 Minute Charge = 2 Hours of Play
ISO Talk - Noise Isolating Mic and Quick Draw Easy Access Control
TuffCord - Tear Resistant Cables
Noise reduction Rating of 26dB with included Silicone Plugs
Premium sound quality

WORK HARD, ROCK HARD

Includes: Nylon Zipper Case, 2 pairs Interchangeable Foam Plugs, 2 pairs Interchangeable Silicone Plugs, Cable Mgmt Clip, USB Charge Cable and Quick Start Guide

Part# PIP-BE	Black/Green	Protector- wired earphones, replaceable foam/silicone tips
Part# PIPP-BE	Black/Green	Protector Plus - wired earphones, mic, replaceable tips
Part# PIPP-UY	Blue/Yellow	Protector Plus VL - 82db Volume Limited, wired earphones, mic, replaceable tips
Part# PIF-BE	Black/Green	Freedom - Bluetooth wireless earphones, mic, replaceable tips
Part# PIF-UY	Blue/Yellow	Freedom VL - Bluetooth 82db Volume Limited, mic, replaceable tips

SLUGGO OX™

**THE SLUGGO-OX IS THE ULTIMATE
GROUND ROD DRIVING TOOL.**

Just one piece and incredibly strong. It delivers the kind of power and strength you need to easily install ground rods, rebar, & other metal objects.



"I THINK IT'S TIME WE GOT A SLUGGO-OX!"

- Incredibly strong: made of 3" hot-rolled, heat-treated, hardened steel
- 3 1/2" bore to accept 3/4" and 5/8" ground rods
- 80% more striking surface
- Yellow zinc chromate surface to deter rust



Part# 67119

The Ground Pounder™

GROUND ROD DRIVER

The Ground Pounder™

Part# 67150



Tired or dragging out the hydraulic hoses to drive a ground rod? The Ground Pounder™ was designed by a lineman who knows about driving ground rods. Quickly and safely drive standard 5/8" and 1/2" ground rods with both feet on the ground.

The Ground Pounder™ handle slides over the ground rod to safely contain the rod while the weighted end drives the rod down. The length of the handle allows for a full striking stroke while the weight does all the work.

Once the handle is flush with the ground, turn the Ground Pounder™ over and use the flat end to finish the drive.

- Weight: 18 lbs.
- For use on 5/8" and 1/2" Ground Rods
- Safe and easy to use
- No more dragging hydraulic lines



STUD BALL

The Stud Ball is a protected magnetic stud finder that will outperform all other types of magnetic stud finder on the market. Unlike other steel stud finders, the Stud Ball can detect metal through 1/2" or 5/8" drywall or other thicker building materials. Will also work through ceramic tiling and up to 3/4" plywood paneling.

- Rare Earth magnets with 27 lbs of pull
- No batteries required
- Detects screws or nails in wood frame walls

Part# 52300



WATCH A VIDEO



PENCIL

Show up your buddies on the job site with your Rack-A-Tiers branded carpenter's pencil. They do the job and look great.

Part# 52466



QUICK DRAW FELT PEN

Complete your tool kit with a black felt marker from Rack-A-Tiers. These things come in handy and ours won't run dry on you.

Part# 52486



SURE MARK

FULLY ADJUSTABLE MARKING SYSTEM

Part# 82050

SAVES TIME AND MONEY ON OUTLET LAYOUT!

The Rough-In Stick allows you to mark out devices conveniently and efficiently by utilizing specifically designed holes to fit your felt marker. The Rod also features a telescopic pole for those tricky fishes.

FEATURES:

- Easily mark stud walls for device installation
- No need to use your tape measure while laying out devices
- Telescopic pole aids in pulling wire above ceiling grids and areas of limited access
- Retrieve metal tools and objects with the magnet attachment
- Extends up to 16'



1/2 INCH CONDUIT NOT INCLUDED



THE ROUGH-IN STICK

The Rough-In Stick allows you to mark out devices conveniently and efficiently by utilizing specifically designed holes to fit your felt marker. The Rod also features a telescopic pole for those tricky fishes.

FEATURES:

- Easily mark stud walls for device installation
- No need to use your tape measure while laying out devices
- Telescopic pole aids in pulling wire above ceiling grids and areas of limited access
- Extends up to 16'

Part# 82000

MARK STUDS AT 12", 18", 42" 48" & 60"



FLASHLIGHTS



Part# 53500
Stick Bug Jr.
60 lumens

THE STICK BUG

The Pocket Light just got brighter, stronger and better. Some call it supercharged! With the new technology of COB LED technology, it has 150/160 lumens - 2 times the amount of the original pocket light. With the durable and strong pocket clip and improved magnetic base, you'll never be left out in the dark again.

FEATURES:

- COB LED
- 160 Lumens
- Operates on (3) AAA batteries
- Up to 7 hours run time
- Water resistant button



THE SILVER BULLET Part# 53800

12-24v Car Charger Flashlight
CREE LED 300 Lumen
Li-ion Battery
Aluminum Alloy
Recharge Time 2-3 hours

FIREFLY Part# 53400

The Fire Fly is a compact aluminum flashlight that features 3 light outputs with and has an output of 120 lumens.

FEATURES:

- 120 lumen output
- Light Modes: High output, low output, flash
- Mechanical zoom function
- 3 AAA batteries included



Part# 53600
Stick Bug
160 lumens

HEAD LIGHT

USB RECHARGEABLE

Part# 54075
Bulb: COB LED
Max Output: 150 Lumens
3 Modes: High, Low and Strobe
Runtime: High (4 Hours) Low (12 Hours)
4-hour charge time
Impact and Water Resistance

STANDARD BATTERY OPERATED

Part# 54050
Features:
Bulb: COB LED
3 AAA Batteries Included
Runtime: 5 hours
Max Output: 150 Lumens



THE OWL EYE Part# 53300

Multi-function electronic switch. Softly press the switch once for high output. Press the switch and hold for dimming function (10%-100% brightness), press quickly two times at any position for strobe function.

Takes 3X AAA Batteries (not included)

FEATURES:

- Waterproof
- Dustproof
- 120 Lumens

GLOW SAFE 360°

The Glow Safe 360 attaches to any hard hat and produces a ring of light around the wearer, enabling him or her to be easily seen in all directions.



FEATURES:

- Shadow-free, panoramic visibility
- Non-slip hard hat attachment
- Only 40 grams (1.4 oz) extra hard hat weight
- Powered by two button cells or rechargeable LED
- Operates up to 24 hours with premium brand batteries or USB Charger

Part#'s
54000 – Standard
54020 – Rechargeable

BAT LIGHT

The Bat flashlight has a durable, scratch and corrosion resistant anodized aluminum frame.

10" Bat Flashlight

Part# 53700
- 3W Cree LED 300 Lumens
- 3 x AA Batteries Included

12" Bat Flashlight

Part# 53750
- 3W Cree LED 300 Lumens
- 3 x AAA Batteries Included



PLUG MASTER

The Plug Master combines a full function dual-outlet circuit tester with 220V detection and multiple direction bubble-levels. Eliminate the need for multiple tools to test and straighten any wall outlets.

FEATURES:

- Acts as horizontal and vertical level
- Use for diagnostics
- Perform quick wiring checks
- Panel identifies conditions shown by LED indicators
- Removable side panels cover outlet during insertion



Part# 99102

AC SENSOR & ULTIMATE AC SENSOR

Prevent electrical shock with this simple tool to locate dangerous defective grounds. This handheld device helps you determine the presence or absence of 50-1000 Volts AC in insulated wires, wall receptacles, fuses, junction boxes, and voltage carrying electrical systems. The bright, red glow indicates AC voltage.

FEATURES:

- Non-contact detection of 50-1000 VAC
- Includes 2 replaceable AAA alkaline batteries
- Senses voltage without metallic contact
- Outstanding safety instrument



Part# 99000 (Red Glow - No Sound)



Part# 99001 (Red Glow - w/Sound)

DUALCHECK™ NON-CONTACT VOLTAGE TESTER

Save time and money with 2 popular testers in 1 unit - featuring a Non-Contact Voltage Detector on one end and GFCI Outlet Tester on the other.

FEATURES:

- 360 degree LED indication
- Loud beeping audible indication
- Exclusive 1 LED readout. No Charts. Instant results
- On/Off button



Part# 99150

JET LEVEL

This convenient and strong pocket level comes with 4 precision vials of 0, 30, 45, and 90 degrees.

FEATURES:

- CNC milled from 6061 aluminum extra large "VD" groove, straddles up to 10" diameter
- Rare Earth magnets for extra holding
- Water and shock resistant



Part# 45404

SHOPPE ROCKET

This tool offers a better, faster, more cost effective solution for tasks commonly performed by electricians, plumbers and pipe fitters. Trade professionals will now have a multi-function tool that is designed to perform a number of tasks simultaneously & accurately, while increasing efficiency and reducing material waste.

- Multi-function leveling system provides an easier and faster way to create multiple bends on a single conduit.
- Built with aerospace engineered high impact polymer resin, this durable material will provide years of use for all trade professionals.
- Super grip rare earth magnets for hands free use on any magnetic surface



Part# 45200

AERIAL TOOL BIN

The Aerial Tool Bin offers a safe and efficient way of storing your tools at waist height while on a variety of Man-Lifts. It is designed to be used on: Aerial Platforms, Scissors Lifts, Boom Lifts, Scaffolding, Swing Stage Railings, and Mast Climbers.



Part# ATB1312

*Tools sold separately

LADDER MATE

MULTI-USE LADDER ORGANIZER

Part# 65300

TOOL HOLDER & PAINT TRAY WITH ADJUSTABLE DIVIDERS

- EASY TO ATTACH
- ADAPTER CLIPS INCLUDED
- WORKS WITH MOST FIBERGLASS, ALUMINUM & WOOD STEP LADDERS

*Tools sold separately



PART#
 65100 - STEP LADDER SHINMATE
 65200 - EXTENSION LADDER SHINMATE

TAKE THE STRESS OFF OF YOUR KNEES, SHINS & LEGS

The Shinmate provides SUPERIOR COMFORT & BETTER BALANCE. Designed by a tradesman for tradesmen, electricians, painters, carpenters & window washers or anyone who works on ladders for hours on end will benefit from the ShinMate.



NEED NEW BUCKET TRUCK PARTS?
 CHECK THE BACK PAGE TO FIND
 OUR NEW PRODUCT SEARCHING SERVICE!



NEEDLE NOSE WIRE STRIPPERS

Sometimes referred to as the best wire strippers on the market, the Croc's Needle Nose Wire Strippers will impress even the toughest critics. These strippers have countless features, each designed to make your job easier and more productive.

FEATURES:

- Glow in the dark handles
- Ergonomic handle design for maximum comfort
- Needle nose tips
- Strip from 22-10 AWG
- Barrel Sleeve Crimper
- NMSC cutter near the "nose" of the stripper
- 8-32 and 6-32 bolt cutters

Part# 47000



Introducing the Croc's Jr., A compact and lightweight version of the original. This model serves as an affordable predecessor to the original without skimping on its numerous applications.

FEATURES:

- Glow in the dark handles
- Ergonomic handle design for maximum comfort
- Compact design
- Strip from 22-8 AWG
- 8-32 and 6-32 bolt cutters

Part# 47002



SEE IT IN ACTION



V-CUTTER

ELECTRICIAN'S ADD-ON CABLE STRIPPER

STRIPS CABLE IN OR OUT OF ELECTRICAL BOXES WITH EASY TO PUSH ACTION

One of the smartest inventions to come to market this decade is the V-Cutter. This simple little blade attaches to most wire strippers and allows you to strip cable with a single swipe.

FEATURES:

- A new way to strip NMSC cable
- Easily attaches to most wire strippers
- Strips cable in or out of electrical boxes with action
- Virtually eliminates nicking or cutting the wire insulator

Part# 47010



STAPLESHARK

FEATURES:

- Includes a handy staple puller and pry bar for multi-purpose use!
- Ruler for quick on the job measurements.
- Use as a quick carpenter's square.
- Holds staples in tight spots and will open a beer bottle at the end of the day.

SEE IT IN ACTION



PART# 52455



STAPLE PULLER!



HOLDS STAPLES!



PRY BAR!



RULER!



BEER OPENER!



VAN MAGNETS

*All Van Magnets Include carabiner



Part# RV010 - 10 lbs 4 Pack



KEEP IT CLEAN

RACKY WIPES

Available in 2 different size bags, Racky Wipes are convenient, affordable rags made from recycled t-shirt material.

Part#
RAG05C - 5 lbs. colored
RAG10C - 10 lbs. colored



4' x 6' DROP SHEET

Every van needs a drop sheet for those days when you gotta make a mess!



PART# RAG46C

BOOTY PACK

Kit includes: 6 pairs of booties, 4 pairs of nitrile gloves, 4 pairs of vinyl gloves, and 3 N95 respirators



Part#
47099 - BOOTY PACK
47099B - BOOTIES ONLY (40 PAIRS)
47099BB - SIX PACK OF BOOTIES



TIMBERWOLF: WATERLESS HAND CLEANER

Packed with a variety of uses this hand cleaner isn't just for getting rid of dirt and grime it also makes for a great anti-itch remedy!

Features:

- Biodegradable
- Contains no petroleum solvents
- Repels mosquitoes
- Prevents and relieves bug bites & poison ivy symptoms

Part#'s

- TW008 - 8oz. Bottle
- TW016 - 16 oz. Bottle
- TW100 - 1 Gallon Jug W/ Pump
- TW714 - Wipes Cannister



Part# RV025 - 25 lbs 3 Pack



Part# RV050 - 50 lbs 2 Pack



KEEP IT STORED

Pop Open Garbage Can

- 9" x 7.5" x 10" while in use
 - Folds flat for easy storage
 - Perfect for quick cleanups
 - Includes handy pipe bending reference guide & Ohms law wheel
- Part# 51010



Exploding GARBAGE CAN

One of our classic products that everybody loves, the Exploding Garbage Can comes in use every single day. This collapsible trash container, featuring an internal support spring that "springs into action", is made of heavy duty, tear resistant polytuf™ fabric.



SEE THEM IN ACTION



FEATURES:

- Size of 19" x 24" when open
- Size of 1 1/2" x 24" when collapsed

PART# 51000

RECYCLE THOSE OLD EXPLODING BOXES...

GO GREEN WITH REUSABLE CONTAINERS!

No more spilling screws on the job because of a flimsy box. Reusable Containers from Rack-A-Tiers are a great way to organize your van, and go green at the same time!



PART# REJAR

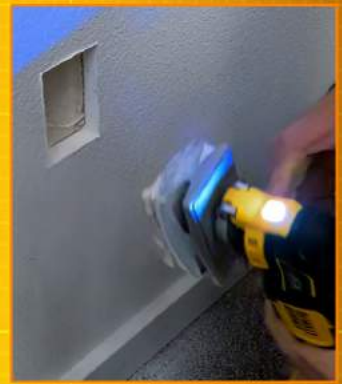


Q-BIT: DRYWALL HOLE CUTTER







NEW SIZES AVAILABLE



The Q-Bit is a revolutionary hole cutter that allows you to quickly cut out device holes. The Q-Bit is built to work with any standard oscillating tool



Q-BIT SAW SIZE CHART

PART #	BLADE SIZE						
42710	2 1/8" X 3 5/16"	X	X				
42740	2 1/4" X 3 5/8"			X			
42700	2 3/8" X 3 3/4"				X		
42720	3 3/4" X 4"					X	X

MULTI BIT: STEP DRILLS

Hardened stepped bits for clean cuts in sheet metal, electrical boxes, arborite, etc. Handy for creating knockouts. Made from high grade cobalt.

- Part# MLT1 - Size: 1/8" - 1/2" 13 Step
- Part# MLT3 - Size: 1/4" - 3/4" 9 Step
- Part# MLT4 - Size: 3/16" - 7/8" 12 Step
- Part# MLT5 - Size: 7/16" - 1 1/8" 12 Step
- Part# MLT7 - Size: 1/4" - 1 1/2" 11 Step



High Performance

CARBIDE TIPPED STEEL CUTTERS

- Part#'s
- 92HC4 - Steel Cutters 7/8"
 - 92HC8 - Steel Cutters 1 1/8"
 - 92HC14 - Steel Cutters 1 3/8"
 - 92HC20 - Steel Cutters 1 3/4"
 - 92HC22 - Steel Cutters 2"
 - 92HC24 - Steel Cutters 2 1/2"
 - 92KIT4 - 4-Pc Set: 7/8", 1-1/8", 1-3/8", extra pilot bit
 - 92KIT8 - 8-Pc Set: 7/8", 1-1/8", 1-3/8", 1-3/4", 2", 2-1/2", 2 extra pilot bits

FEATURES

- Ejector spring
- Tapered center drill
- Carbide tipping allows for repeated regrinding



THE GUIDE-O

The Guide-O allows you to enlarge holes utilizing a pilot bit the same size as the existing hole. By using a pilot bit that matches up to the existing hole, the hole cutter will stay centered while drilling the new, larger hole.



WATCH A VIDEO

FEATURES:

- Fits most standard carbide and bi-metal hole cutters
- Kit includes 1/2", 3/4" and 1" pilot bits
- Made from carbon steel
- *Hole Cutter not included*

- Part#'s
- 94050 - 1/2"
 - 94075 - 3/4"
 - 94100 - 1"
 - 94200 - Guide-O Kit (1/2", 3/4", 1")
 - 94225 - 2 1/2" Shaft Replacement
 - 94226 - 2" Shaft Replacement
 - 94050B - 1/2" Bi-Metal
 - 94075B - 3/4" Bi-Metal
 - 94100B - 1" Bi-Metal
 - 94200B - Guide-O Bi-Metal Kit (1/2", 3/4", 1")

JAVELIN

ALL IN ONE DRILLING EXTENSION Part# 95000

The Javelin is here to change the way we drill holes. Never get caught in a drilling extension jam again! This all-in-one extension drill can reach up to 10 feet. It comes with a fully adjustable hole cutter and auger bit extension kit. Just cut a 3/8" - 16 threaded rod to any length you need.

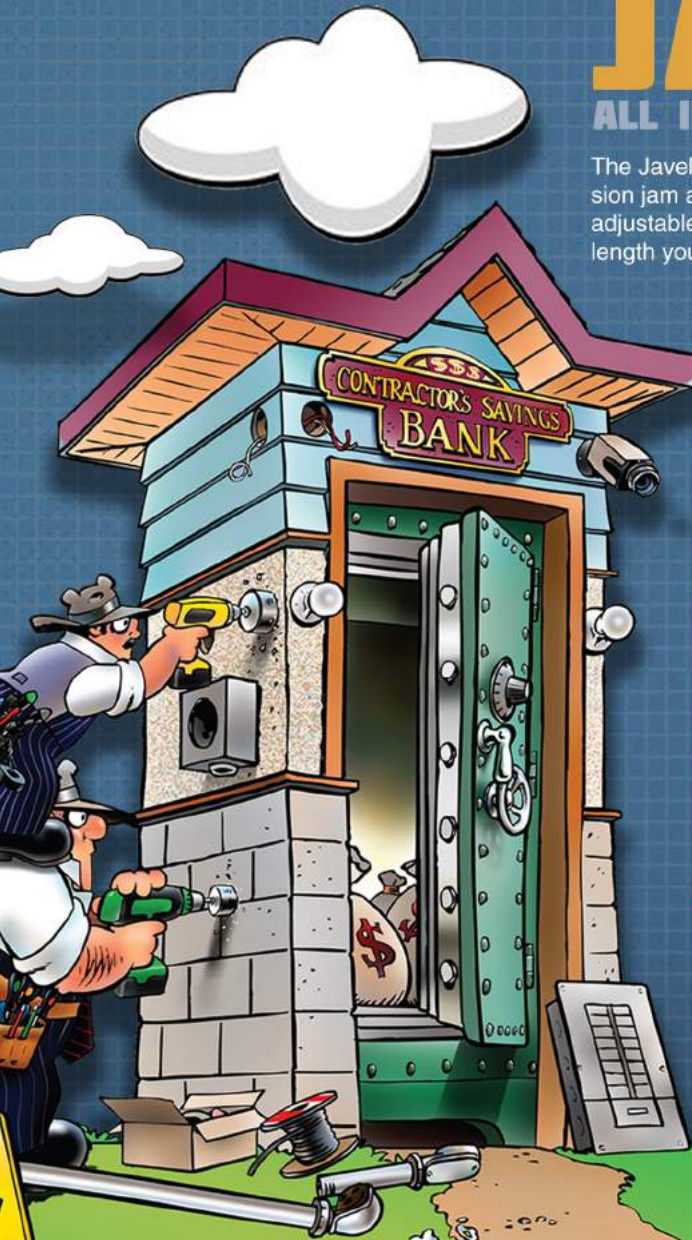
FEATURES:

- Holds drivers bits
- Holds nut drivers
- Holds drill bits
- Reaches up to 10 feet long



SDS Bits

- Part# 91814 - Masonry Drill Bit SDS 1/4"
- Part# 91838 - Masonry Drill Bit SDS 3/8"





SWITCH BITS

INTERCHANGEABLE FLEX BITS

Rack-A-Tiers is proud to announce the Switch Bit line, our newest line of flexible installer bits. Quickly and easily customize your own set with these flexible bits featuring interchangeable heads and different shank lengths to fit any job.



ETS31621	SINGLE SHANK	3/16"	21"
ETS31633	SINGLE SHANK	3/16"	33"
ETS31654	SINGLE SHANK	3/16"	51"
ETS31669	SINGLE SHANK	3/16"	69"
ETS1421	SINGLE SHANK	1/4"	21"
ETS1433	SINGLE SHANK	1/4"	33"
ETS1454	SINGLE SHANK	1/4"	51"
ETS1469	SINGLE SHANK	1/4"	69"
ETB38316	INTERCHANGEABLE HEAD	3/8"	
ETB916316	INTERCHANGEABLE HEAD	9/16"	
ETB3414	INTERCHANGEABLE HEAD	3/4"	

ETC38S316	SWITCHBIT COMBO HEAD (3/8") & SHANK (3/16" x 33")
ETC916S316	SWITCHBIT COMBO HEAD (9/16") & SHANK (3/16" x 33")
ETC34S14	SWITCHBIT COMBO HEAD (3/4") & SHANK (1/4" x 33")



QUATTRO FLEX AUGER BITS



Fast and aggressive self feed auger bits, welded to a flexible shaft. Cuts clean holes. Crossbored at both ends for easy wire pulling. Use for wood only.

Part# QTT3824	3/8"x24"	Part# QTT1224	1/2"x24"	Part# QTT91624	9/16"x24"	Part# QTT3424	3/4"x24"
Part# QTT3836	3/8"x36"	Part# QTT1236	1/2"x36"	Part# QTT91636	9/16"x36"	Part# QTT3436	3/4"x36"
Part# QTT3848	3/8"x48"	Part# QTT1248	1/2"x48"	Part# QTT91648	9/16"x48"	Part# QTT3448	3/4"x48"
Part# QTT3854	3/8"x54"	Part# QTT1254	1/2"x54"	Part# QTT91654	9/16"x54"	Part# QTT3454	3/4"x54"
Part# QTT3872	3/8"x72"	Part# QTT1272	1/2"x72"	Part# QTT91672	9/16"x72"	Part# QTT3472	3/4"x72"

More sizes available

HIGH SPEED STEEL

Superior quality M-2 High Speed Steel drill bit welded to a flexible shaft. Cuts both metal and wood. No need to worry about hidden nails or metal studs when drilling.

Part# FLX1424	1/4"x24"	Part# FLX3824	3/8"x24"	Part# FLX1224	1/2"x24"
Part# FLX1436	1/4"x36"	Part# FLX3836	3/8"x36"	Part# FLX1236	1/2"x36"
Part# FLX1448	1/4"x48"	Part# FLX3848	3/8"x48"	Part# FLX1248	1/2"x48"
Part# FLX1454	1/4"x54"	Part# FLX3854	3/8"x54"	Part# FLX1254	1/2"x54"
Part# FLX1472	1/4"x72"	Part# FLX3872	3/8"x72"	Part# FLX1272	1/2"x72"

GUIDE TOOL

Allows the Piranhbits to bend for drilling from outside the wall cavity.



Part# FIB-GUD





OverDRIVE™

FAST BORING AUGER BITS

The Over-Drive boring auger bits are specifically designed to not bog down your battery drill. Designed with a 1/4" chuck and available in 3/4" and 7/8".

Features:

- Available in 7" lengths
- 1/4" drill chuck
- Designed to put less strain on your battery drill

Part# AW34OD-3/4" x 7"
AW78OD-7/8" x 7"

DIRT AUGER SYSTEM

USE FOR AUGURING AND INSTALLING WIRE OR PIPE UNDER SIDEWALKS AND DRIVEWAYS

Features:

- 5' long 1/4" Shaft, 3/4" Auger
- Fish hole for easy retrieval of wire
- Custom heat treated drill bit designed for organic material
- Long taper for easy retrieval
- Interchangeable lengths
- Custom heat treated spring steel shank for optimum memory

Applications:

- Cable Installation
- Landscape Lighting
- Sprinkling Systems
- Landscape Feeding Stakes

Part# ETD034



Part# AUFILE



AUGER FILE

DON'T THROW AWAY EXPENSIVE AUGER BITS!

Save those precious auger bits from being another dull tool lying around your shop or work truck. Save time and money by sharpening your bits from the comfort of your own home.

FEATURES:

- Top teeth for auger's main cutters
- Side teeth for sharpening tip

18" AUGER BITS

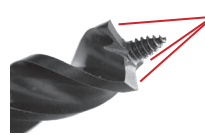
- Part# AW3818 3/8"
- Part# AW1218 1/2"
- Part# AW11618 11/16"
- Part# AW3418 3/4"
- Part# AW7818 7/8"
- Part# AW118 1"
- Part# AW1418 1 1/4"

7 1/2" AUGER BITS

- Part# AW3807 3/8"
- Part# AW1207 1/2"
- Part# AW11607 11/16"
- Part# AW3407 3/4"
- Part# AW7807 7/8"
- Part# AW107 1"

NAIL CHIPPER & STANDARD CHIP AUGER

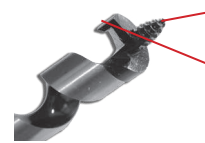
NAIL CHIPPER SHIP AUGER



TRI-CUT design with 3 precision ground edges for fast, smooth cutting without resistance.

REDUCES NAILS TO CHIPS without grabbing and leaves a clean hole with minimal "blowout."

STANDARD SHIP AUGER



Precision ground cutting edge for fast cutting of clean holes in wood.

Burr-free lead screw for easy starts and pull-through without material build-up.

To order Tri-Cut Bits add a 'T' to the part #'s



AUGER SHAFT CENTERING TOOL

- No more bit walking, nail hitting, wall patching or carpet replacing
- Fits all 3/16" shaft auger bits
- Includes 1 each of 1-3/4" & 2-1/4" Balls (Drill Bits not included)

Part# BB3412



BEFORE AFTER

HOLE-IN-ONE

MULTI-FUNCTION HOLE CUTTER

SAVE YOUR LUNGS! CUTTING HOLES WITHOUT PROTECTION CAN BE HAZARDOUS TO YOUR HEALTH. PROTECT YOU AND YOUR CREW WITH THE HOLE-IN-ONE.



Part# 90200 - 1 7/8" to 9"
Part# 90300 - 1 7/8" to 12"
Part# 90400 - 1 7/8" to 17"

CUTS THROUGH:

- Plywood
- Sheetrock
- Fiberglass
- Fiber cement board
- Up to 20 GA. sheet metal
- Aluminum



CARBIDE REPLACEMENT BLADES

Part# 90-VT



HSS REPLACEMENT BLADES

Part# 90-VH

NO MORE MESS EASY DISPOSAL OF DEBRIS WORKS WITH HOLE SAW UP TO 8" AND DRILL BITS TOO!

Driller's Dust Bowl

THE FLEXIBLE DRILLER'S DUST BOWL COMPRESSES AGAINST THE WORK SURFACE AND TRAPS ALL DUST AND DEBRIS AS YOU DRILL. THE BOWL FITS YOUR DRILL AND HOLE SAW WITHOUT ANY ADJUSTMENTS NEEDED.

MFG NOTE:

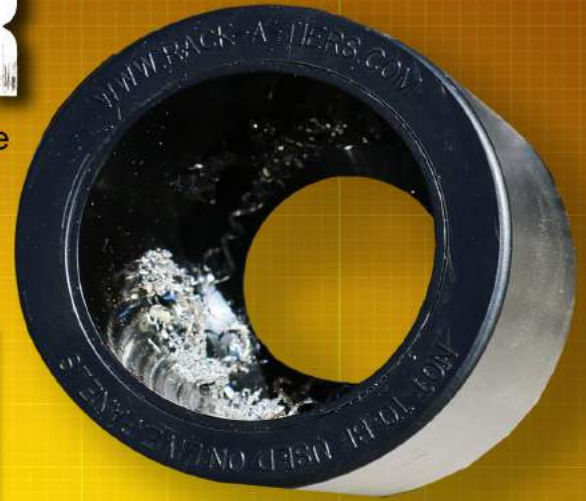
YOU MAY ENJOY A FACE FULL OF DRYWALL DUST, BUT YOUR CUSTOMERS MIGHT NOT. PUT AN END TO "UNPROTECTED HOLE SAWING" AND WRAP UP WITH THE DRILLER'S DUST BOWL.



PART# 48000

CHIP CATCHER

The Chip Catcher adheres to metal surfaces using rare earth magnets. Metal shavings are attracted to the magnets embedded in the cylinder walls. Makes for easy clean up!



Part# 84100

- Increases Safety
- Magnet base attaches to metal surfaces & catches metal shavings
- Quick & convenient clean-up

***NOT TO BE USED ON LIVE PANELS**



DIRT BAG

Electrical Safety Drilling Tool

The Dirt Bag is specifically designed to eliminate metal shavings from spreading throughout a panel while drilling. Utilizing extra strong rare earth magnets in the frame, The Dirt Bag clings to the metal surface to catch all debris caused by drilling.

Part# 84000

- Magnet in base of bag attracts filings
- Increases safety
- Easily attaches to metal surfaces
- Made from non-conductive material
- Removable magnet included in bag pocket
- Fits most panels



***NOT TO BE USED ON LIVE PANELS**

RACKY BITS

COLOR CODED DRIVER BITS

It's so simple but it works.

Racky Bits are easier to use and harder to lose. If that's not enough, our genuine Robertson® RACKY BITS have hardened tips that fit better and last longer.

IMPACT BITS



MAGNETIC HEX BITS



GENUINE ROBERTSON BITS



DOUBLE ENDED BITS



DOUBLE ENDED HEX BIT



Part# 72564RY

PHILLIPS BITS



WE HAVE SQUARE DRIVE SCREWS AVAILABLE IN THE USA. THE BEST SCREW ON THE STREET.

#0 YELLOW ROBERTSON® SQUARE BIT PART#'S

Part# 70030Y - 3" Bulk Bit
Part# 70040Y - 4" Bulk Bit
Part# 70030YP1 - 3" Packaged Bit
Part# 70040YP1 - 4" Packaged Bit

#1 GREEN ROBERTSON® SQUARE BIT PART#'S

Part# 70120G - 2" Bulk Bit
Part# 70120GP1 - 2" Packaged Bit
Part# 70130G - 3" Bulk Bit
Part# 70140G - 4" Bulk Bit
Part# 70160G - 6" Bulk Bit
Part# 70130GP1 - 3" Packaged Bit
Part# 70130GP2 - 3" Packaged Bits (Qty 2)
Part# 70140GP1 - 4" Packaged Bit
Part# 70140GP2 - 4" Packaged Bits (Qty 2)
Part# 70160GP1 - 6" Packaged Bit
Part# 70160GP2 - 6" Packaged Bits (Qty 2)

#2 RED ROBERTSON® SQUARE BIT PART#'S

Part# 70220R - 2" Bulk Bit
Part# 70220RP1 - 2" Packaged Bit
Part# 70230R - 3" Bulk Bit
Part# 70240R - 4" Bulk Bit
Part# 70260R - 6" Bulk Bit
Part# 70230RP1 - 3" Packaged Bit
Part# 70230RP2 - 3" Packaged Bits (Qty 2)
Part# 70240RP1 - 4" Packaged Bit
Part# 70240RP2 - 4" Packaged Bits (Qty 2)
Part# 70260RP1 - 6" Packaged Bit
Part# 70260RP2 - 6" Packaged Bits (Qty 2)

#2 BLUE PHILLIPS BIT PART#'S

Part# 70241BL - 4" Bulk Bit
Part# 70241BL - 6" Bulk Bit
Part# 70241BLP1 - 4" Packaged Bit
Part# 70241BLP2 - 4" Packaged Bits (Qty 2)

#2 BLUE PHILLIPS BIT PART#'S (CONT)

Part# 70261BLP1 - 6" Packaged Bit
Part# 70261BLP2 - 6" Packaged Bits (Qty 2)

#3 BLACK ROBERTSON® SQUARE BIT PART#'S

Part# 70340BK - 4" Bulk Bit
Part# 70360BK - 6" Bulk Bit
Part# 70340BKP1 - 4" Packaged Bit
Part# 70360BKP1 - 6" Packaged Bit -

#4 ORANGE ROBERTSON® SQUARE BIT PART#

Part# 70430P

1/4" RED HEX BIT PART#'S

Part# 70531R - 2.5" Bulk Hex Bit
Part# 70561R - 6" Bulk Hex Bit
Part# 70531RP1 - 2.5" Packaged Hex Bit
Part# 70561RP1 - 6" Packaged Hex Bit

5/16" YELLOW HEX BIT PART#'S

Part# 70631Y - 2.5" Bulk Hex Bit
Part# 70661Y - 6" Bulk Hex Bit
Part# 70631YP1 - 2.5" Packaged Hex Bit
Part# 70661YP1 - 6" Packaged Hex Bit

3/8" BLUE HEX BITS PART#'S

Part# 70731BL - 2.5" Bulk Hex Bit
Part# 70761BL - 6" Bulk Hex Bit
Part# 70731BLP1 - 2.5" Packaged Hex Bit
Part# 70761BLP1 - 6" Packaged Hex Bit

7/16" BROWN HEX BIT PART#'S

Part# 70831BR - 2.5" Bulk Hex Bit
Part# 70861BR - 6" Bulk Hex Bit
Part# 70831BRP1 - 2.5" Packaged Hex Bit
Part# 70861BRP1 - 6" Packaged Hex Bit

1/2" BLACK HEX BIT PART#'S

Part# 70931BK - 2.5" Bulk Hex Bit
Part# 70961BK - 6" Bulk Hex Bit
Part# 70931BKP1 - 2.5" Packaged Hex Bit
Part# 70961BKP1 - 6" Packaged Hex Bit

DOUBLE HEX BIT PART#

Part# 72564RY - 5/16" & 1/4" Hex Bit
Part# 72564RYP1 - 5/16" & 1/4" Hex Bit Packaged

#1 & #2 DOUBLE ENDED SQUARE BIT PART#'S

Part# 72124GR - 4" Bulk Bit
Part# 72126GR - 6" Bulk Bit
Part# 72124GRP1 - 4" Packaged Bit
Part# 72124GRP2 - 4" Packaged Bits (Qty 2)
Part# 72126GRP1 - 6" Packaged Bit
Part# 72126GRP2 - 6" Packaged Bits (Qty 2)

#2 PHILLIPS & 1/4" SLOT DOUBLE ENDED BIT PART#'S

Part# 72204BY - 4" Bulk Bit
Part# 72204BYP1 - 4" Packaged Bit

#1 LIGHT BLUE PHILLIPS BIT PART#'S

Part# 70141LB - 4" Bulk Bit
Part# 70141LBP1 - 4" Packaged Bit
Part# 70141LBP2 - 4" Packaged Bits (Qty 2)

IMPACT DRIVER BITS PART#'S

Part# 7011PI - Impact Driver Bit - Phillips #1 x 1"
Part# 7012PI - Impact Driver Bit - Phillips #1 x 2"
Part# 7011RI - Impact Driver Bit - Square Green #1x1"
Part# 7012RI - Impact Driver Bit - Square Green #1 x 2"
Part# 7021PI - Impact Driver Bit - Phillips #2 x 1"
Part# 7022PI - Impact Driver Bit - Phillips #2 x 2"
Part# 7021RI - Impact Driver Bit - Square Red #2 x 1"
Part# 7022RI - Impact Driver Bit - Square Red #2 x 2"
Part# 7031RI - Impact Driver Bit - Square Black #3 x 1"
Part# 7032RI - Impact Driver Bit - Square Black #3 x 2"

IMPACT BITS NOW AVAILABLE IN 4 & 6 INCHES

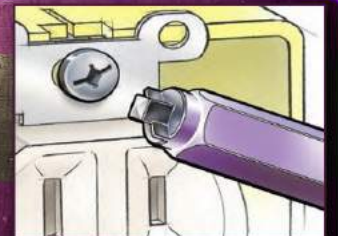
Part # 70144B - Impact Bit - Phillips Blue #1 x 4"
Part # 70144R - Impact Bit - Robertson Green #1 x 4"
Part # 70166B - Impact Bit - Phillips Blue #1 x 6"
Part # 70166R - Impact Bit - Robertson Green #1 x 6"
Part # 70244R - Impact Bit - Robertson Red #2 x 4"
Part # 70266R - Impact Bit - Robertson Red #2 x 6"

lockHARD bit

The lockHard bit has two strategically placed wings on the sides of its square bit end. This allows it to lock into place and makes sure you NEVER strip another screw

PART#

72133P - 3" BULK BIT
72134P - 4" BULK BIT





PICQUIC [®]



SIXPAC *plus*

- 7 - 3" LENGTH, 1/4" HEX POWERBITS
- 11.5" TOTAL LENGTH
- PART# P88001



DASH 7

- 7 - 2" LENGTH, 1/4" HEX POWERBITS
- COMES IN 4 BRIGHT NEW COLORS
- PART# P05001



STUBBY

- SOLID, COMFORTABLE, HIGH TORQUE HANDLE
- 6 HIGH QUALITY 1.3" LENGTH INSERT BITS
- IDEAL FOR WORK IN CLOSE QUARTERS
- PART# P91000



DEMAGNETIZER

MAGNETIZES OR DEMAGNETIZES DRIVER BITS, TOOLS AND SMALL STEEL PARTS INSTANTLY!
Part# 70988

MAGNETIC BIT HOLDER



QUICK CHANGE MAGNETIC BIT HOLDER
PART# 72000



proGrabit

DAMAGED SCREW REMOVER

Part# 72120

- WORKS ON JAGGED, UNEVEN AND ROUGH BREAKS
- SELF CENTERING TIP, NO WALKING
- COMPATIBLE WITH QUICK CONNECT CHUCK SYSTEMS
- EASY TO USE WITH 3/8" VARIABLE SPEED REVERSIBLE DRILL
- EXTRACTS SCREWS UP TO 4 INCHES

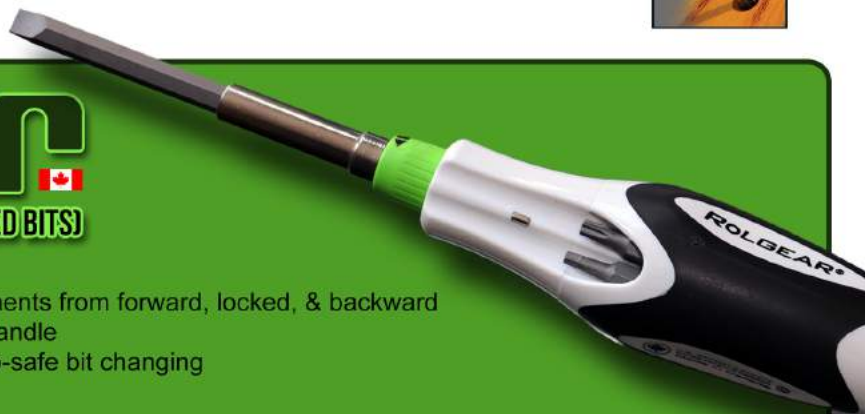


ROLGEAR [®]

MULTIBIT RATCHET SCREWDRIVER / 15 TIPS (DOUBLE ENDED BITS)

- Slotted: 3/16", 1/4"
- Square: 1, 2, 3, 4
- Phillips: 1, 2, 3, 4
- Torx: 10, 15, 20, 25
- Smooth and silent ratcheting
- Single-handed ratchet adjustments from forward, locked, & backward
- Ergonomic, cushion comfort handle
- Magnetic components for drop-safe bit changing
- Stainless steel bit adapter

PART# SDR14



PANEL BUDDY

Knockout System



Part# 7WBK100

Tired of trying to remove knockouts? Let the Panel Buddy take care of them for you. This simple but genius tool removes knockouts in half the time, with half the effort.

FEATURES:

- Kit removes knockouts on Electrical, Security, Alarm, and Datacom Panels
- Works with lipped and non-lipped panels



HOLDSaBIT

Every moment during a project that you spend looking for the right tool is wasted time and results in frustration and bad decisions. The ingenious HOLDSaBIT slips on or off a drill in seconds. Simply pull one loop over the front of the drill and pull the second loop to the back of the drill. The HOLDSaBIT will hold any 1/4" hex shank item as well as pencils, nut drivers and hex shank drill bits. Tips and bits are easily inserted and removed.



FEATURES:

- Sold in a kit with bits or sold separately.
- Hold any 1/4" hex shank items as well as pencils, drill bits, etc.
- 4 channels to fit a variety of length bits

Part# 70000 (Bits Not Included)

Part# 700.kit (includes 1-70140G, 1-70240R, 1-70241BL, 1-70531R, 1-70631Y & 1-72133P)



REVBIT: REVERSE PILOT BIT

The RevBit takes a common item, the pilot bit, and perfects it. By being reverse twist the RevBit eliminates any bending, breaking and mess caused by hole saw teeth catching once your pilot bit goes through the material.

FEATURES:

- Reverse threaded pilot bit for a soft landing once the pilot bit breaches the work surface
- 4" in length
- Made from high speed steel
- Works with any standard hole saw
- Will not tear sheetrock, or finished wall surface
- Preserves the hole saw teeth, for the entire life of the tool
- Made in the USA



Part# 91700

NUT BLASTER

Universal Wire Connector

- Fast, easy installation
- Prevents sore fingers and cramping hands
- Available in two sizes

Part#

XL - 72101 - Fits all brands yellow, tan & red twist on wire connectors

XXL - 72102 - Fits all brands large grey & blue twist on wire connectors



NUT BLASTER

In-Store Display

Contact us to order this counter display. Other counter displays also available.

NEED NEW FASTENERS?
CHECK OUT THE BACK PAGE
FOR MORE INFORMATION



MAG DADDY

MAGNETIC FASTENERS



MAG DADDY MAGNETIC FASTENERS UTILIZE ULTRA-STRONG MAGNETS TO STRAP WIRE AND CABLE. MAG DADDY MAGNETS WILL STAY ATTACHED THROUGH OIL, GREASE, PAINT OR DIRT. A VARIETY OF CONFIGURATIONS ARE AVAILABLE TO SUIT YOUR NEEDS.

CABLE HOLDERS



Magnetic Cable Holder (10 Pack)
 Part# RM050BK - 1/2" Black
 Part# RM050WT - 1/2" White
 Part# RM075BK - 3/4" Black
 Part# RM075WT - 3/4" White
 Part# RM100BK - 1" Black
 Part# RM100WT - 1" White

CABLE TIE MOUNTS



Magnetic Cable Tie Mount (10 Pack)
 Holds Standard Zip Ties
 Part# RM110BK - 10 lb Black
 Part# RM110WT - 10 lb White
 Part# RM115BK - 15 lb Black
 Part# RM115WT - 15 lb White

MAGNET MOUNT



Magnet Mounts (10 Pack)
 Part# RM164SL - 19 mm/16 lb Silver
 Part# RM265SL - 23 mm/26 lb Silver
 Part# RM266SL - 26 mm 26 lb Silver



Magnetic Clamp (10 Pack)
 Magnetic Strength: 15 lbs.
 Part# RM051BK - 1/2" Black



3/4" Wide Cable Mount (10 Pack)
 Part# RM215BK - 15 lbs Black



Mini Magnet Cable Tie Mount (10 Pack)
 Color: Black
 Magnetic Strength: 5 lbs
 Part# RM020BK



Female Magnet Mount
 1/4-20
 Part# RM420FM



Cable Hanger
 Cable Hanging Tool
 Part# RM300HT



Magnetic Bridle Ring
 Part# RM125BR - 1.25" 1/4-20
 Part# RM200BR - 2" 1/4-20



TOP J-HOOKS

(10 Pack)
 360° Rotation
 Part# RMJ075T - 3/4"
 Part# RMJ131T - 1 5/16"
 Part# RMJ200T - 2"



SIDE J-HOOKS

(10 Pack)
 360° Rotation
 Part# RMJ075S - 3/4"
 Part# RMJ131S - 1 5/16"
 Part# RMJ200S - 2"

RACKY STRAPS



Racky Strap utility straps hold almost anything wherever you need them. These are handy on any site with several wires or other loose items.

FEATURES

- Holds anything up to 33lb per sq. inch
- Quality hook and loop may be used with soft side up or down
- Double sided hook and loop may be used with soft side up or down
- Made with heavy duty Velcro®
- Available in 1/2" x 12" and 1"x12" strips

1/2" Strap

Part# RS1005



1" Strap

Part# RS1010



Handi-Hoops

CABLE MANAGEMENT SYSTEM

- Use for cable management in telecommunication
- Used as guides and supports to organize existing runs or assisting with new installs
- Install to conform to NEC and local codes
- A smart Handi-Hoop pathway creates the condition whereby "one man pulls" can be accomplished

Part# HH1010



Pull Elbow



The Pull Elbow™ is a well-designed, innovative cable routing solution that can be used in virtually any environment. If you are looking for a tool that will provide a safe bend radius for fiber optics and other sensitive data cabling, this item is perfect. Mount this product using one of many possible mounting methods (screws, nails, ties or beam clamps) to suit your application, indoors or outdoors.

- Allows you to pull cabling around corners in overhead wire installations
- Extra wide bend radius is more than sufficient for fiber optic, copper data, A/V, and power cabling
- 2.5" cable channel diameter provides space for large cable bundles
- Cable tie groove on tip allows you to keep the cables inside regardless of the angle at which you install it
- Ideal for providing proper support to all types of cables in attics, factories, data centers, sewers, under bridges, and many other applications

Part# 42125



FILLERS & CONNECTORS

KO KILLERS: PLASTIC KNOCKOUT FILLERS

Fits thin (1/32") and thick (1/8") wall thickness.

Features:

- No tools required
- Snap in and out with ease
- Non-conductive, safer



- Part# KOK50 - 1/2" Filler (50/bag)
- Part# KOK75 - 3/4" Filler (50/bag)
- Part# KOK100 - 1" Filler (25/bag)
- Part# KOK125 - 1 1/4" Filler (25/bag)
- Part# KOK150 - 1 1/2" Filler (25/bag)
- Part# KOK200 - 2" Filler (25/bag)
- Part# KOK999 - Assorted Fillers Kit (25/bag)



RAT 500

Rapid Fire NMSC connector (100 Pack)

Suitable for all 1/2" knockouts
Fast and Easy. No tools required

Features:

- 100/bag
- Single cables
- Two cables
- Install from outside

RAT 750

Rapid Fire NMSC connector (50 pack)

Suitable for all 3/4" knockouts
Fast and Easy. No tools required

Features:

- 50/bag
- Single cables
- Install from outside

Part#

- RAT500 1/2" Connector
- RAT750 3/4" Connector



TT500

NMSC Two Way 1/2" Connector (100 Pack)

Installs from inside and outside the box

Features:

- 100/bag
- Single cables
- Two cables

Part#
TT500



STUD BUDDIES

(100 Pack)

Why Square Bushing? 70%
More cross sectional area!
More cables, easier pulls.

- One piece
- One hand installation
- Fits all standard steel studs & punches
- Fire rated V.O.
- Faster, easier to use

Part#

- SB220 - ROUND
- SB240 - SQUARE





CROW'S FEET

3/8" Metal Flange

Crow's Feet are a galvanized steel ceiling flange designed to accommodate 3/8" threaded rod.



Part# SCF38

Part#

- LJ50R - 1/2" (30 pack)
- LJ58R - 5/8" (25 Pack)
- LJ100R - 1" (15 Pack)



LEVEL JACK

HOW DOES IT WORK?

Alignment tabs reach across wood/metal studs to level low voltage outlets with A.C. boxes.

NO TAPE MEASURE • NO LEVEL REQUIRED

Available in 1/2", 5/8" and 1" rise

If you're fussy about your rough-in layout, the Level Jack makes life easy. If you're not, no one will notice because you can't screw up with the Level Jack.

Just clip it on to the AC box and screw it down. No level, no tape measure, no special boxes, no special fittings required. Level Jacks fit most AC boxes.



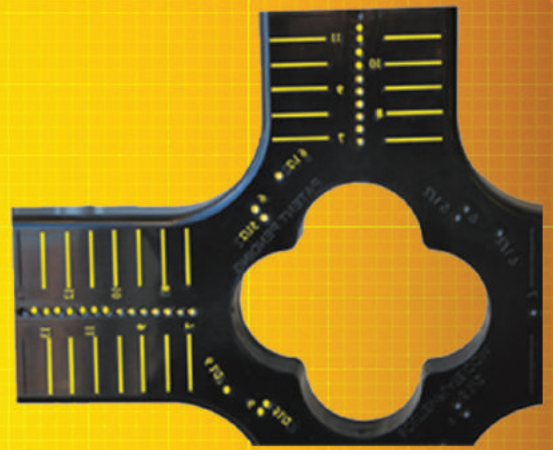
BOLT TEMPLATE

The Bolt Template helps you easily lay out bolts to be used in concrete for future installation of poles or beams. The template is multi-functional and has an easy guide for centering bolts.

Features

- Has a whopping 41 templates!
- Quick, easy, and reusable
- Weather resistant ABS plastic
- Sets poles and beams 8" - 24"

Part# 67441



AIRCRAFT CABLE & WIRE CRIMPS

- Available in 500 and 1,000 Feet.
- No need to go anywhere else - Buy it from us!
- Diameter of cable: 1/16"

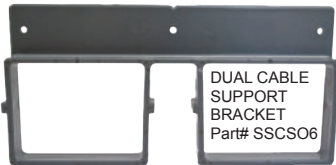
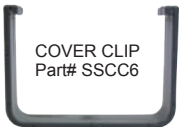
Part# SC500 – Aircraft Seismic Cable 500'
 Part# SC1000 – Aircraft Seismic Cable 1000'
 Part# SCC116 – Aircraft Seismic Cable Crimps (100 pack)



NON-METALLIC CABLE SUPPORT SYSTEM

QUICK & EASY INSTALLATION

- No structural damage from drilling
- No gluing
- Easily add cables
- Great for new construction
- Add circuits when needed
- Perfect for remodelling
- No more expensive drill bits
- Reduce home run length up to 30%



8 AND 10 FOOT LENGTHS AVAILABLE!

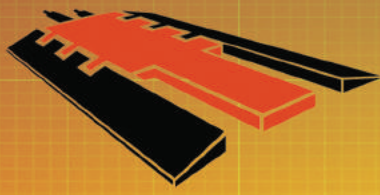


MAXIMUM NUMBER OF INSTALLED CABLES ALLOWED

CABLE TYPES NMB-UF-SEU	
CABLE WIRE SIZES	MAX NUMBER OF INSTALLED CABLES
14-2	38
12-2	30
10-2	22
8-2	14
6-2	10
4-2	5
2-2	4
2/0-2	2
4/0-2	2

CABLE TYPES NMB-UF-SEU	
CABLE WIRE SIZES	MAX NUMBER OF INSTALLED CABLES
14-3	29
12-3	23
10-3	16
8-3	10
6-3	6
4-3	3
2-3	2
2/0-3	1
4/0-3	1

Note: All cables listed contain an equipment grounding conductor that is bare and covered with the cable sheath. Passed UL temperature test with 80% load of the over-current device. Combinations of cables can be used not exceeding 40% maximum fill. UL Listed for one and two family dwellings.



ELASCO PRODUCTS



EXTREME CABLE PROTECTION

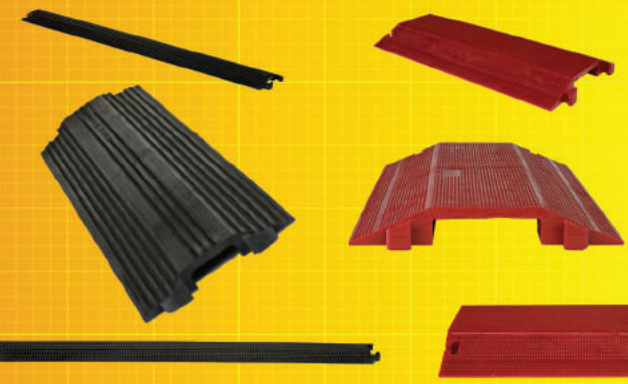
DURABLE

LONG LASTING

LIGHTWEIGHT

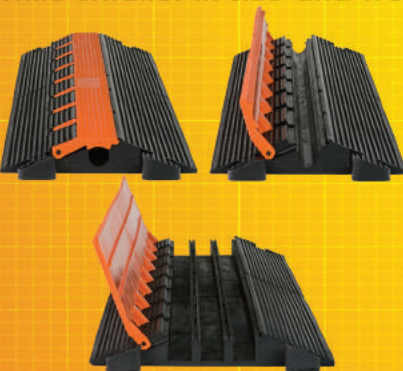
EASY TO USE

Elasco Drop Overs are quick and easy to install, protecting everything from small wires to large pipes. These cable management Drop Overs come with a single channel but can accommodate a multitude of pipes or wires within their protection.



Part#	Description	Channel			Overall				
		No.	Width	Height	Length	Width	Height	Weight	Load Capacity (Lbs/Tire)
ED1050-BK	Single channel, 1/2" x 1 1/2", black	1	1.50	0.50	36.00	5.25	0.75	2.00	6,125
ED1050R	Single channel, 1/2" x 1 1/2", red	1	1.50	0.50	36.00	5.25	0.75	2.00	6,125
ED1010-BK	Single channel, 1" x 4", black	1	4.00	1.00	36.00	10.50	1.50	6.00	8,850
ED1010-R	Single channel, 1" x 4", red	1	4.00	1.00	36.00	10.50	1.50	6.00	8,850
ED2010-BK	Single channel, 1 1/4" x 2 3/4", black	1	2.75	1.25	36.00	11.25	1.75	15.00	12,500
ED2010-R	Single channel, 1 1/4" x 2 3/4", red	1	2.75	1.25	36.00	11.25	1.75	15.00	12,500
ED8200-BK	Single channel, 1 3/5" x 7 1/2", black	1	7.50	1.60	36.00	20.00	2.50	30.00	7,500
ED8200-R	Single channel, 1 3/5" x 7 1/2", red	1	7.50	1.60	36.00	20.00	2.50	30.00	7,500

Commonly used in vehicle or pedestrian settings, the LifeGuard collection provides invaluable protection. While smaller in size and weight, these products are still designed for significant load bearing strength.



Part#	Description	Channel			Overall				
		No.	Width	Height	Length	Width	Height	Weight	Load Capacity (Lbs/Tire)
LG1100	Single channel, 1"	1	1.00	1.00	36.00	9.50	1.75	12.00	12,500
LG2125	Dual channel, 1 1/4"	2	1.25	1.25	36.00	11.25	1.75	13.00	12,500
LG2125-ED	End set for 2125 series	2	1.25	1.25	4.25/8.50	11.25	1.75	3.00	
LG3125	Triple channel, 1 1/4"	3	1.25	1.25	36.00	13.00	1.75	16.00	14,000
LG3125-ED	End set for 3125 series	3	1.25	1.25	4.25/8.50	13.00	1.75	3.00	
LG5150B	Five channel, 1 3/8", light duty	5	1.38	1.38	36.00	16.50	1.75	18.00	8,250



The Ultraguard collection offers an extra low profile and push buttons attached to lid to ensure extra lid closure and cable security.

Part#	Description	Channel			Overall				
		No.	Width	Height	Length	Width	Height	Weight	Load Capacity (Lbs/Tire)
UG5140	Five channel, 1 3/8", push button lid	5	1.38	1.25	36.00	20.00	1.75	24.00	20,000
UG5140-45L	Five channel, 1 3/8", 45 degree left	5	1.38	1.25	26.00	25.00	1.75	14.00	20,000
UG5140-45R	Five channel, 1 3/8", 45 degree right	5	1.38	1.25	25.50	23.00	1.75	13.00	20,000
UG5140-ED	End set for 5140 series	5	1.38	1.25	7.75/15.50	20.00	1.75	10.00	
UG7140	Seven channel, 1 3/8" x 1 1/4", push button lid	7	1.38	1.25	36.00	24.00	1.75	30.00	18,000
UG5140-ADA	Five channel, 1 3/8", push button lid, ADA Compliant	5	1.38	1.25	19.00	52.50	1.75	30.00	20,000

The Heavy Duty collection has been protecting cables and wires for over 25 years and is available in one, two, three, and five channel cable guards. Offering extra load bearing capacity compared to the lighter duty, the MightyGuard collection will stand the test of time.



Part#	Description	Channel			Overall				
		No.	Width	Height	Length	Width	Height	Weight	Load Capacity (Lbs/Tire)
MG1200	Single channel, 2"	1	2.00	2.00	36.00	14.00	2.50	23.00	19,000
MG1200-ED	End set for 1200 series	1	2.00	2.00	5.50/11.00	14.00	2.50	5.50	
MG1300	Single channel, 3"	1	3.00	3.00	36.00	20.50	3.50	30.00	19,750
MG2200	Dual channel, 2"	2	2.00	2.00	36.00	16.50	2.50	e	16,500
MG2200-ED	End set for 2200 series	2	2.00	2.00	5.25/10.50	16.50	2.50	6.00	
MG3200	Triple channel, 2"	3	2.00	2.00	36.00	19.00	2.50	28.50	12,250
MG3200-X	Intersection for 3200 series	3	2.00	2.00	36.25	38.25	2.50	36.00	12,250
MG3200-45L	45 degree left turn for 3200 series	3	2.00	2.00	25.50	23.00	2.50	19.00	12,250
MG3200-45R	45 degree right turn for 3200 series	3	2.00	2.00	30.50	25.00	2.50	25.00	12,250
MG3200-ED	End set for 3200 series	3	2.00	2.00	5.50/11.00	19.00	2.50	6.50	
MG5200	Five channel, 2"	5	2.00	2.00	36.00	24.00	2.50	35.00	15,750
MG5200-X	Intersection for 5200 series	5	2.00	2.00	36.25	38.25	2.50	40.00	15,750
MG5200-90L	90 degree left turn for 5200 series	5	2.00	2.00	31.75	30.50	2.50	36.00	15,750
MG5200-90R	90 degree right turn for 5200 series	5	2.00	2.00	31.75	30.50	2.50	36.00	15,750

The XtremeGuard Collection offers multiple channels able to accommodate 4" size hoses, cables, and pipes. With bonus 2" size channels, this patent pending design is the first and only product like it on the market, able to withstand almost any load capacity requirement.



Part#	Description	Channel			Overall				
		No.	Width	Height	Length	Width	Height	Weight	Load Capacity (Lbs/Tire)
XG2400	Two channel, 4.5" Xtreme Duty, one bonus 2" channel	2 / 1	4.5 / 2	4.5 / 2	27.50	32.00	6.00	100.00	40,000
XG4400	Four channel, 4.5" Xtreme Duty, two bonus 2" channels	4 / 2	4.5 / 2	4.5 / 2	27.50	40.00	6.00	118.00	30,000

Elasco now offers the most visible glow in the dark cable protectors in the industry. In addition to the high quality urethane protectors, they have incorporated the highest grade of strontium aluminate which requires only 10 seconds of UV exposure to fully charge and will maintain its visibility throughout the night. Requiring no maintenance, batteries or electricity, these glow protectors are ideal for providing additional visibility when needed in dark conditions.

Part#	Description	Channel			Overall				
		No.	Width	Height	Length	Width	Height	Weight	Load Capacity (Lbs/Tire)
ED1010-BK-GLOW	Single channel, 1" x 4", black, GLOW	1	4.00	1.00	36.00	10.50	1.50	6.00	8,850
ED1010-R-GLOW	Single channel, 1" x 4", red, GLOW	1	4.00	1.00	36.00	10.50	1.50	6.00	8,850
LG2125-GLOW	Dual channel, 1 1/4", GLOW	2	1.25	1.25	36.00	11.25	1.75	13.00	12,500
UG5140-GLOW	Five channel, 1 1/4", push button lid, GLOW	5	1.38	1.25	36.00	20.00	1.75	24.00	20,000



COUNTERTOP BOXES



Introducing Rack-A-Tiers new Pop-Up boxes. The sleek and compact design offers a great option for installing a pop-up outlet into a countertop or floor. Pops up while in use and is out of the way and flush when pushed down.

SQUARE COUNTERTOP POP-UP BOXES

SQUARE COUNTERTOP POP-UP PLATE ASSEMBLY WITH 20 AMP GFI RECEPTACLE

STAINLESS	- PART# VPU.SS
BLACK	- PART# VPU.BK
BRASS	- PART# VPU.BR
OFF WHITE	- PART# VPU.WT

SQUARE COUNTERTOP POP-UP PLATE ASSEMBLY WITH 15 AMP W/2 USB

STAINLESS	- PART# VPU.SS.2USB
BLACK	- PART# VPU.BK.2USB
BRASS	- PART# VPU.BR.2USB
OFF WHITE	- PART# VPU.WT.2USB



DESKTOP POP-UP BOX

Pop-up desktop box includes: 1 - Decora 15 Amp Duplex Receptacle W/ 2USB and 6 Port Empty Communication Plate.mpty Communication Plate. 9 foot power cable. Part # VPU.DTB.BK



Part# VKJ.BK - Black Voice Modular Coupler
Part# VKJIT.BK - Black Cat 5E Modular Coupler
Part# VKC.BK - Black Blank Modular Fill
Part# VKJHDMI.BK - Black HDMI Modular Coupler
Part# VKJUSB.BK - Black USB Pass Through

Features

- 120 V male cord attached
- Mounts flush in boardroom tables, desks, etc.
- 15 Amp Duplex Receptacle W/ 2USB
- 6 Port Empty Communication Plate

FLOOR BOXES



SQUARE FLOOR POP-UP BOXES WITH SLIDE BUTTON

SQUARE POP-UP FLOOR PLATE ASSEMBLY WITH 20 AMP GFI RECEPTACLE

STAINLESS - PART# VFPU.SS.GFI
BRASS - PART# VFPU.BR.GFI



SQUARE POP-UP FLOOR PLATE ASSEMBLY WITH 15 AMP W/2 USB

STAINLESS - PART# VFPU.SS.2USB
BRASS - PART# VFPU.BR.2USB

SQUARE POP-UP FLOOR PLATE ASSEMBLY WITH 15 AMP

STAINLESS - PART# VFPU.SS
BRASS - PART# VFPU.BR

SQUARE FLOOR POP-UP PLATE ASSEMBLY INCLUDE VPU.WB WOOD ENCLOSURE BOX. CONCRETE BOX SOLD SEPARATELY - PART# VPU.CB



ROUND FLOOR BOXES

ROUND FLOOR POP-UP PLATE ASSEMBLY WITH 15 AMP DECORA

STAINLESS - PART# VPU.FD.SS
BRASS - PART# VPU.FD.BR

ROUND FLOOR POP-UP PLATE ASSEMBLY WITH 15 AMP GFI

STAINLESS - PART# VPU.FB.SS
BRASS - PART# VPU.FB.BR

ROUND FLOOR POP-UP PLATE ASSEMBLY WITH 6 DATA PORTS

STAINLESS - PART# VPU.FC.SS
BRASS - PART# VPU.FC.BR

ROUND FLOOR POP-UP PLATE ASSEMBLIES DO NOT INCLUDE ENCLOSURE BOX. WOOD BOX, PART# VPU.WB AND CONCRETE BOX, PART# VPU.CB, SOLD SEPARATELY.



**ALSO
AVAILABLE**



Cast Iron
Floor Boxes



Nozzles

SEE WEB SITE FOR MORE DETAILS!

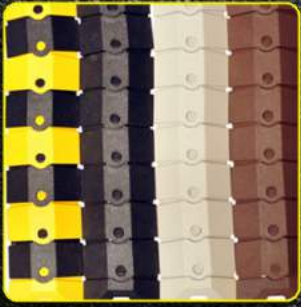
ULTRA- SIDEWINDER[®]

CABLE PROTECTION SYSTEMS

Cavity Size:
3/4" W x 3/8" H

FEATURES:

- ARTICULATION PIECES OFFER FLEXIBLE DESIGN - CURVES, CORNERS & S-CURVES ARE EASILY MADE WHILE MAINTAINING A COMPLETELY FLAT PROFILE.
- SIMPLE INSTALLATION. NO TOOLS REQUIRED.
- AVAILABLE IN BLACK, YELLOW, BROWN, AND GRAY.
- FULLY-CUSTOMIZABLE LENGTH - FROM 4.5" TO AN UNLIMITED LENGTH.



Part#

U1830BY - 3 ft. with end caps black/yellow
U1832BK - 3 ft. with end caps black
U1804BR - 3 ft. with end caps - Brown
U1806G - 3 ft. System with end caps - Gray

U1801BY - 1 ft. Extension System - Black & Yellow
U1803BK - 1 ft. Extension System - Black
U1805BR - 1 ft. Extension System - Brown
U1807G - 1 ft. Extension System - Gray

TEMPORARY CABLE GUARD

5' LONG X 4.5" WIDE X 1.25" HIGH

Accommodates cable up to .75" in diameter.
Withstands heavy vehicle traffic.
Part# TCG5

5' LONG X 10.5" WIDE X 2.75" HIGH

Accommodates a cable/bundle up to 2.25".
Withstands heavy vehicle traffic.
Part# TPG5

The Temporary Cable Guard withstands heavy vehicle traffic without damaging cable. Easily anchored with concrete screws if needed. The Temporary Cable Guard helps you restore services quickly by allowing you to run temporary cables over most any surface. It reduces truck rolls and eliminates downtime due to cable cuts, storm damage, traffic or roadway activities.

EFEERGY ELITE Classic



Part# EF003

Wireless Energy Monitor

Save up to 15% on your electricity bill through greater awareness!



The Elite Classic is our latest and renewed version of our Elite Wireless Power Monitor. It updates every 10 seconds so you can instantly see the impact of turning a light on or off, boiling the kettle or using your tumble dryer. It has an innovative memory function that allows you to see how much you have used today, yesterday and in the last week or month. The Elite Monitor also displays your daily average so you can see when you are using more electricity than normal and see how your average usage reduces as you change the way you do things - Great for sub panels to monitor tenant energy use

Accessories

200A Current Sensor

Additional sensor for measuring current up to 200 amperes. Works with the elite or e2. Perfect for whole house applications where a 200 ampere service is installed. Split core design easily fits around wire sizes up to #4/0 AWG without breaking connections.



Part# EF012

Hub Online Accessory Kit

Monitor your home energy use online in real-time engage hub accessory kit. Online platform FREE of charge with no subscription or monthly fees Access your energy data anytime, from anywhere



Part# EFH01

EZ GENERATOR SWITCH

EZ Generator Switch is the most affordable & efficient generator connecting manual transfer switch on the market. We are the only company in both the United States & Canada that builds switches that are matched to your exact generator. Our switches are safe and code compliant.



EFFICIENT

Our switches energize only essential circuits such as; heating circuits, kitchen circuits, lighting circuits, hot water systems, sump pumps and general outlets. Because you are only energizing essential circuits the need for large inefficient generators are not needed. More user friendly, fuel economical generators can be used.


AFFORDABLE

Because we have designed an essential circuit transfer switch that only handles the items you need during power outages we are able to provide you with the lowest cost manual transfer switch on the market. By only powering essential items during power outages, there is no need for larger, more expensive systems which also require larger generators, expensive systems which also require large generators. We conform to CAN/CSA Std. C22.2 #14 and UL standard 1640

Part# 99215



THE TOP HAT

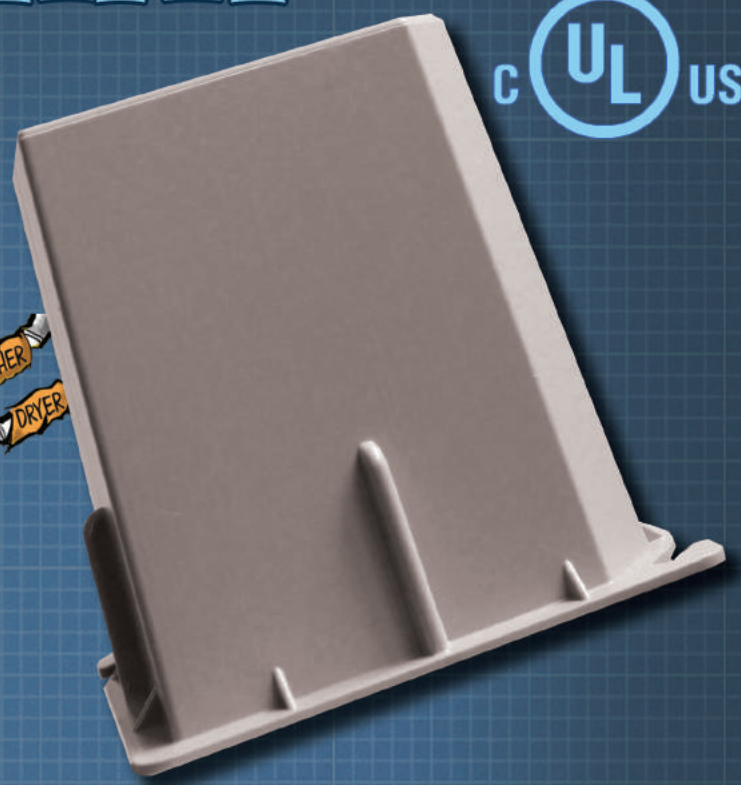
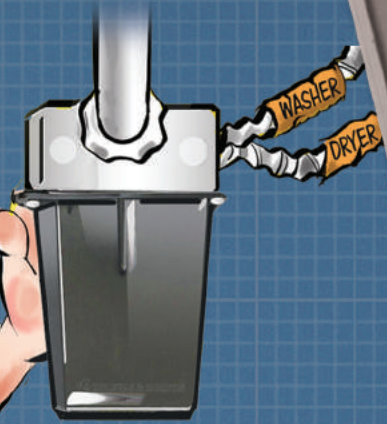

 PART# TC1400
 *PACKAGED IN 50 & 5 PACKS



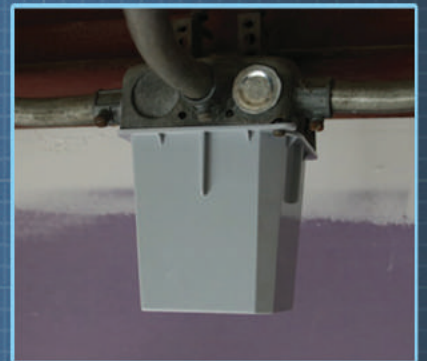
As a simple box cover, the Top Hat is used instead of a blank cover with several important advantages. It allows installers to leave wires that enter the junction boxes extending straight. With the depth of the Top Hat there is no need to coil wires and stuff them into the smaller parts of the junction box. This will save time during installation and more importantly during troubleshooting. Additionally, this high volume cover makes it easier to access the contents of any junction box.

FEATURES

- ULC Approved
 - Adds 35.8 cubic inches to the existing junction box
 - Plenum Rated
- Patent Pending*



BEFORE

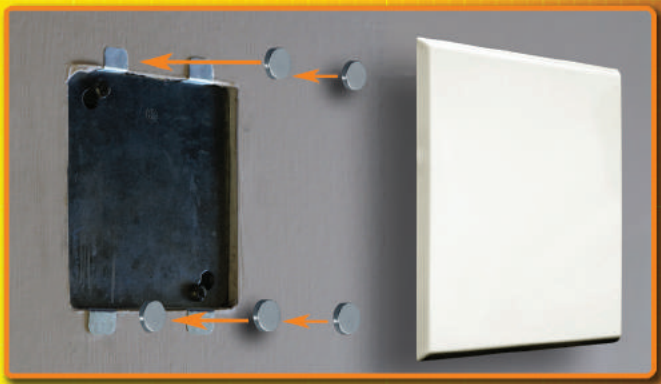


AFTER

6.5 INCH PLATE

FEATURES:

- Installs in seconds with rare earth magnets - snaps in place to metal clips (included)
- White decorative plate covers and 5-1/2" square hole or electrical box
- Can also be used to cover a round hole with up to a 5-1/2" diameter
- Visually appealing white decorative plate - no need to paint metal covers



Part# D612



GPS LIGHTLOCK ASTRONOMICAL TIMERS

GPS LightLock instantly installs everywhere you have existing photocells and programmable timers. GPS LightLock is used worldwide by Fortune 500 companies, public utilities, cities, counties, airports, universities, lighting manufacturers, HOA's, and private individuals alike.

Onboard GPS does all your programming & maintenance

GPS LightLock automatically sets your date/ time & location, programs the switch times for your location, self-recovers from power outages & keeps the clock timed to the GPS atomic clock. You'll never have to deal with controls maintenance again, and you never pay a fee to use the GPS system!

Pays for itself many times over in servicing costs alone

Servicing controls is very expensive. Electricians perform hazardous work. They are well paid, as they should be. The retail price of GPS LightLock is a fraction of the cost of a single service trip charge to replace a photocell or re-program a timer.

New Custom Switching Times!

GPS LightLock now offers custom programming to meet your requirements stored in memory forever, and you still won't have to program a timer ever again. Still self-recovers from power outages and still requires no user programming, maintenance or even batteries!

Examples:

- On 20 minutes before sunset & off 20 minutes after sunrise (for added security).
- On at any local time you require and off at any local time you require, with automatic daylight savings time already configured (lights, signs, facilities access, etc.)
- On at sunset and off at any time you require, with automatic daylight savings time (retail signs, landscape lighting, parking lot lights, etc.).
- On at sunrise and run for 8 hours (pool pump controllers).
- On at sunrise and off at sunset (access control to parks, pools, etc.).

And of course we still have our legacy dusk-to-dawn and standard sunrise to sunset controls. The default programming is always sunrise to sunset unless alternate switch times are requested by the customer at time of order.

Twist-Lock Astronomical Timer 120-277VAC

Installs in under a minute!
The world's only fully automatic astronomical timer.
Switches lights dusk-to-dawn anywhere in the world.
Plug & play. Never needs programming. Self recovers from power outages.
Direct replacement for twist-lock photocells.
Rated 120-277VAC 1800VA Listed UL916.
15 Year Warranty. Made in USA.

Part# 85-GPS-MV-T



Wire-In Astronomical Timer 120-277VAC

Model # GPS-MV-W
Our most popular model.
Includes twist-lock astronomical timer plus wire-in twist-lock socket with 1/2" standard female thread.
Direct replacement for all wire-in photocells and programmable timers.
Rated 120-277VAC 1800VA Listed UL916.
15 Year Warranty. Made in USA.

Part# 85-CPCR-MV-W



Additional Part#s

- 85-CPCR-1G - GPS LightLock Astronomical Timer - Landscape Lighting - Cord & Plug
- 85-CPCR-1G-GF - GPS LightLock Astronomical Timer - Landscape Lighting Cord & Plug w/ GFCI
- 85-CPCR-2G-4R - GPS LightLock Astronomical Timer - Landscape Lighting Cord & Plug - Double Gang
- 85-CPCR-2G-GF - GPS LightLock Astronomical Timer - Landscape Lighting Cord & Plug - Double Gang w/ GFCI
- 85-WPSM-BP-KIT - GPS LightLock Astronomical Timer - Weatherproof Surface Mount Box Kit 120-277VAC

REAL BRACKET

Real Bracket 10020G is a bracket that was designed to be used in the Electrical trade to support and strap 1/2" - 1" EMT, Rigid Metallic, PVC and Data Cables indoors or outdoors and it is plenum rated. Real Bracket is 7/8" wide 20 gauge galvanized with a series of mounting and forming holes and is sold in 23 15/16" sections.

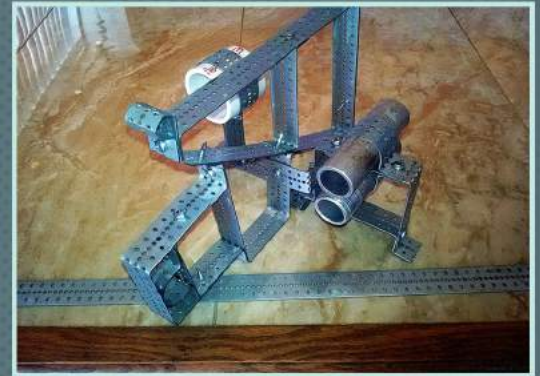
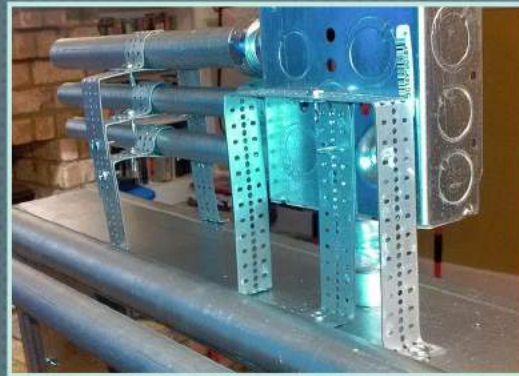
The bracket design allows for the user to bend and sever the bracket in the field with basic hand tools like needle nose, side cutters or etc. The holes in the middle of the bracket are 7/64" holes and are designed to work with #8 self-drilling or sharp point screws. Screw selection should be chosen according to requirements and environment that the bracket and screw will be subject to. The holes can be easily drilled out to 1/8" if rivets are preferred.

The outside oval holes are designed to help in forming straight bends and to serve as a fracture point when bent repeatedly to break the unused part off finished bracket. There are many more uses for the bracket outside the electrical field. The possibilities are endless.

10.25"

12"

24"



RB1025 –Real Bracket 10.25" long
 RB1200 –Real Bracket 12" long
 RB2400 –Real Bracket 24" long

Slammers

QUICK-CAPS AND SPACERS

This is the product the electrical industry has been waiting for to make their jobs easier. No longer will duct tape be necessary, the Quick Cap and Spacer System is here! The Spacer maintains the proper spacing for installing a 4 inch square electrical box, while the Cap guards against contamination by construction debris.



Part #		Description
SL-50RS		1/2" Rigid Conduit Spacer
SL-75RS		3/4" Rigid Conduit Spacer
SL-100RS		1" Rigid Conduit Spacer
SL-50RC		1/2" Rigid Conduit Cap
SL-75RC		3/4" Rigid Conduit Cap
SL-100RC		1" Rigid Conduit Cap
SL-50ES		1/2" EMT Spacer
SL-75ES		3/4" EMT Spacer
SL-100ES		1" EMT Spacer
SL-50EC		1/2" EMT Cap
SL-75EC		3/4" EMT Cap
SL-100EC		1" EMT Cap
SL-75RSWS		3/4" Rigid Spacer With Support
SL-100RSWS		1" Rigid Spacer With Support
SL-150RCL		1 1/2" Single Rigid Clip
SL-200RCL		2" Single Rigid Clip
SL-150RC		1 1/2" Single Rigid Cap
SL-200RC		2" Single Rigid Cap

HOT SPOTS

ELECTRICAL FIRE SAFETY & CONDITION MONITORING LABELS

FUNCTION

Hot Spots are colour changing labels that indicate electrical faults that are present and need to be repaired before electrical shut down or a fire happens. They come in two kinds. One is designed for the use on any electrical equipment that has an air space between the stickers and electrical components. Eg/ Doors of electrical cabinets or plugins. The second design is direct contact stickers that affix to any electrical components directly such as breakers, fuses, bus bars and switch gear for example. Both are patent designed to meet NFPA 70 B Law of temperature rise, and are CSA approved for electrical applications. Indoor use only.

Hot Spots come in desired size and shapes to fit electrical components.

They work on electrical door panels of all types MCC/ Fuse/CDP/ECT. They work of fuses/breakers/switch gear or any other electrical components.

INACTIVE

Hot Spots 23 C I S C

Hot Spots find and categorize your electrical faults by changing colors. When the fault is fixed they change back to the original color. CSA approved. Patent pending.

ACTIVE

Hot Spots 23 C

I S C

Important

Serious

Critical

APPLICATORS/ INSTALLATION

Hot Spots for safety and reliability should be installed by qualified electrical system technicians. To apply, measure the temperature of the fault free desired electrical component at normal peak load and apply the appropriate Hot Spot that is marked for that temperature by an A. (Eg. A 21) Deg C/F. If a fault develops, the Hot Spots will change colors indicating the fault severity of Important, Serious or Critical, at a glance.



Available In Packs of 5 or 100

Part#

21C/70F Door Application - Pack of 5: T2170-DA / Pack of 100: T2170-DA-100

21C/70F Electrical Components - Pack of 5: T2170-EC / Pack of 100: T2170-EC-100

23C/73F Door Application - Pack of 5 :T2373-DA / Pack of 100: T2373-DA-100

23C/73C - Electrical Components - Pack of 5 T2373-EC / Pack of 10: T2373-EC-100

25C/77F - Door Application - Pack of 5: T2577-DA / Pack of 100: T2577-DA-100

The Original

ELECTRICAL REFERENCE BOOKS

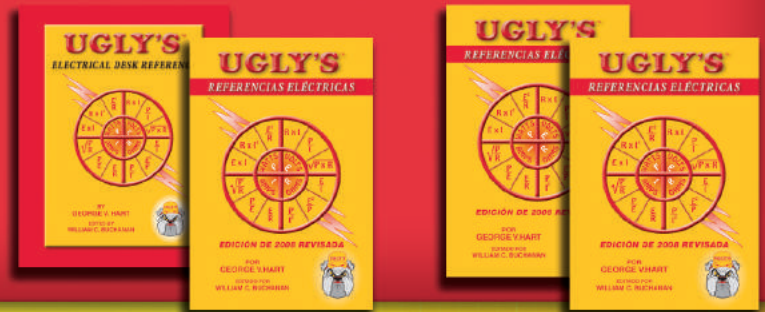
EVERYONE NEEDS AN UGLY'S

ON THE JOB REFERENCE

- Mathematical formulas
- National electrical code
- Wiring configurations
- Conduit bending
- Voltage drops

PART #'S

- 73214 - ELECTRICAL SAFETY & NFPA 70E®
- 73215 - ELECTRICAL REFERENCES
- 73216 - ELECTRIC MOTORS & CONTROLS
- 73217 - REFERENCIAS ELÉCTRICAS
- 73218 - CONDUIT BENDING



StingRay



- PROTECTS EXPENSIVE AND FRAGILE CABLES
- PROTECTS CEILING FROM TWISTING AND MARRING
- PREVENTS CABLES FROM TANGLING WITH THE CEILING, SAVING TIME AND LABOR
- SMOOTH INTERIOR CREATES AN ALMOST FRICTIONLESS CHASE
- SIDE SLIT ALLOWS FOR EASY CABLE REMOVAL AT ANY TIME
- EASY TO INSTALL AND REMOVE



SNAP IN PLACE AND PULL YOUR WIRE

Part# 40400

Part# 73400

EZ BULB

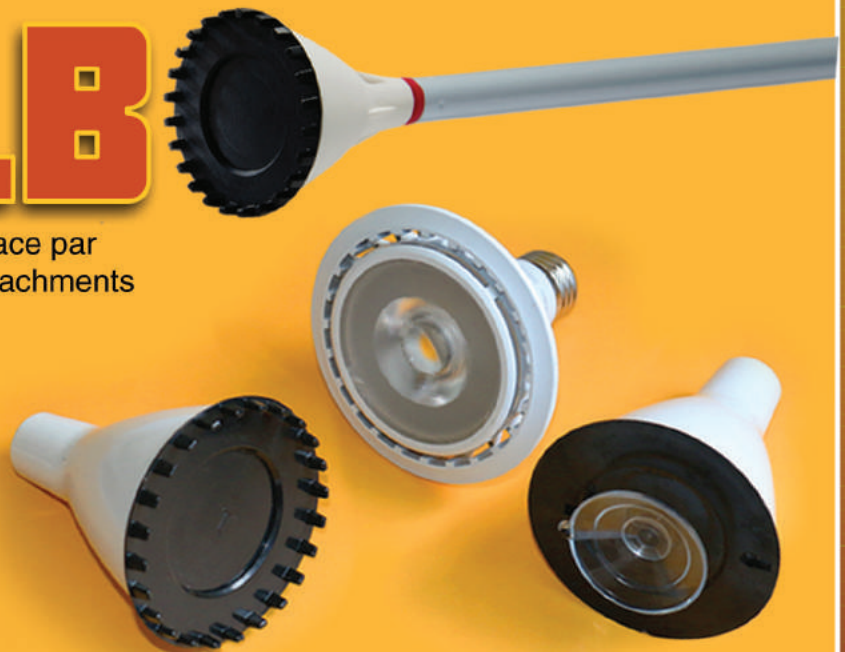
EZ Bulb makes it effortless to change and replace par LED light bulbs with simple and easy to use attachments that fit on any universal extension pole.

EZ Bulb is available as a Suction Cup Kit or 3" or 5" kit containing an interchangeable holder and 6 light bulb inserts for the top leading light bulb manufacturers in today's market.

Part#s

- 54400 EZ Bulb Suction Cup Kit
- 54300 EZ Bulb 3" 6 Piece LED Kit
- 54500 EZ Bulb 5" 6 Piece LED Kit

NOTE: Universal Extension Pole Not Included



Industrial



CORD CONNECTOR

Connect and Protect

A construction quality Cord Connection System for protecting your corded power tools and extension cords. The Industrial Cord Connector extends cable life and adds convenience to all your corded tools and extension cords. Simply add a Cord Stop to the ends of both the corded tool and the extension cord, cover the Stops with the Barrel Cover and cinch the straps tight. The snug Barrel Cover protects your electrical connection from the outdoor elements and job site knocks and bangs. The Industrial Cord Connector holds your cords tight and eliminates time wasting disconnects and puts an end to cord wear from knotting and tying.

THE INDUSTRIAL CORD CONNECTOR PROVIDES A SAFE AND EASIER WAY TO CONNECT YOUR ELECTRICAL CORDS TOGETHER

- Protects against arc flashing
- Eliminates the need to knot or tape cords together
- Prevents frustrating cord disconnects and ground plugs from breaking off
- Protects your electrical connections from outdoor elements

- Part# 97100 – Industrial Cord Connector Set (barrel & cord stops)
- Part# 97110 – Cord Stop #10
- Part# 97112 – Cord Stop #12
- Part# 97114 – Cord Stop #14
- Part# 97116 – Cord Stop #16
- Part# 97120 – Barrel Only



PROLOCK

For Secure & Safe Connections

Single End Extension Cord

- Molded Pro Lock connectors will not pull away from the cord body; offer extra water resistance.
- Automatic locking feature: insert male end into Pro Lock connector and push together to lock. Pull collar down to unlock.
- High impact polycarbonate on both housing & collar guarantees hard service, extra heavy duty use.
- Lighted Amber Power Check plug & Pro Lock connector indicates power is running through the cord and connector.
- Special cold weather (-58°F) PVC jacket guarantees flexibility in temperatures well below freezing



- Part# 98000 - Prolock Cord Connector
- 98050 - 50' 12/3 Extension Cord



Extension Cord Connector

- Specially designed automatic locking feature: insert male blades and pins into the Pro Lock connector and push together to lock; pull the collar down to unlock.
- We use high impact polycarbonate on both housing & collar to guarantee hard service, extra-heavy duty use.
- Temperature Range: -40°F to +160°F.
- Pull Strength: 80 Lbs horizontally or vertically.

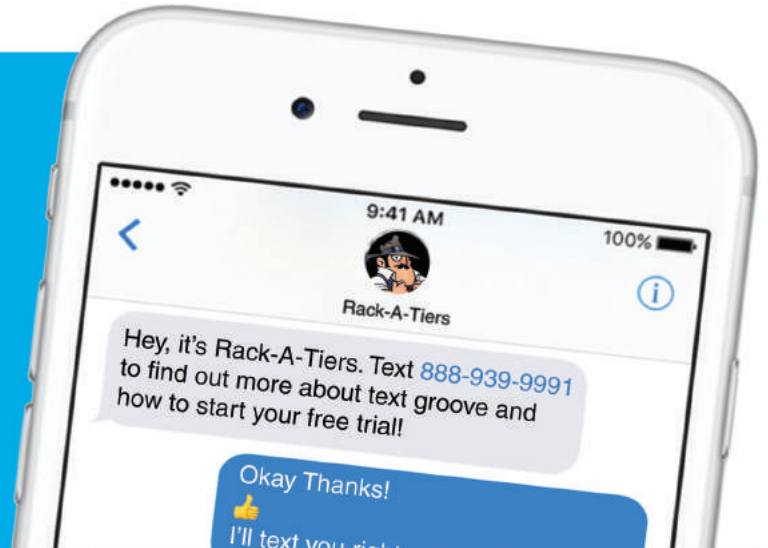
Our patented Pro Lock mechanical connector was designed to prevent all extension cords with standard straight blade 15A-125V plugs and connectors from pulling apart. It eliminates the problem of accidental disconnects that result in unnecessary power loss. Fits all standard 15A-125V U-Ground ends.

TEXT GROOVE

GOODBYE DIALING HELLO TEXTING

If you run a business and want to enable texting on your existing business line,

use what Rack-A-Tiers uses - Text Groove.
Text 888-939-9991 for information



INVENTOR'S CORNER



Find yourself flipping through the Rack-A-Tiers catalog wishing you had thought of that tool, or frustrated that you thought of that idea first?

Well, here's your chance to put your ideas into action. Rack-A-Tiers launched Inventor's Corner for creative folks like you to pitch ideas and read testimonials from past inventors.

Even if Rack-A-Tiers is unable to add your idea to our product line, we have the experience and knowledge to provide advice for your next move as an inventor.

Check out the Inventor's Corner at RACK-A-TIERS.COM/INVENTORS and who knows maybe in next year's catalog your product could have a full-page spread.

WWW.RACK-A-TIERS.COM/INVENTORS



Rack Rewards CONTRACTOR REWARDS PROGRAM

- Step 1) Buy an amazing Rack-A-Tiers product
- Step 2) Snap a picture of your receipt
- Step 3) Visit rewards.rack-a-tiers.com and upload a photo of your receipt to start earning reward points.



ATTENTION ALL WHOLESALESALEERS!

SPRUCE UP YOUR SHOWROOM WITH A GREAT
LOOKING DISPLAY FROM **RACK-A-TIERS**

*Tools Not Included



MOBILE 12 DISPLAY
Part# MOBILEDISPLAY12



**RACKY BITS
COUNTERTOP DISPLAY**
Part# 70SKE12

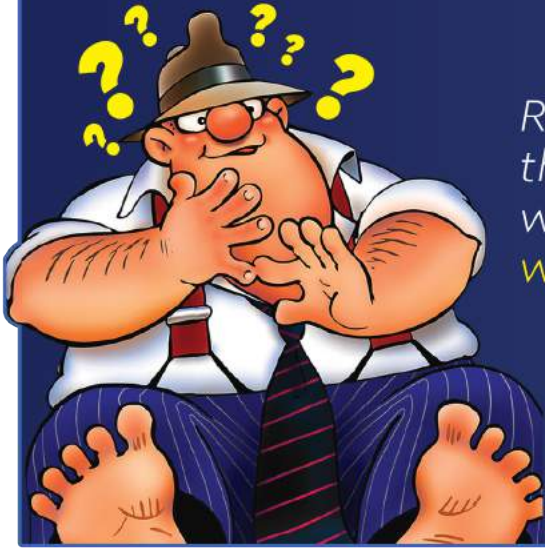


24" X 48" PAPER WALL PANELS
Part# WALLPAPER-BK
(24"x 48")



COUNTERTOP TUBE DISPLAYS

Need a specific product? We'll help you find it!



Rack-a-tiers has over 25 years experience in the electrical manufacturing industry and if we don't have what you are looking for we will find it for you!

TEXT: 888-939-9991
OR EMAIL: SALES@RACK-A-TIERS.COM

RACK MARKET

**AN ARRAY OF QUALITY
GOODS SOLD AT KILLER PRICES**

**LOOK GOOD IN
RACK-A-TIERS
GEAR**

**SORRY, NO
PINSTRIPE SUITS
AVAILABLE**



VISIT: STORE.RACK-A-TIERS.COM

WEB: WWW.RACK-A-TIERS.COM TOLL FREE: 1-888-939-9991 EMAIL: SALES@RACK-A-TIERS.COM