



9301-E



9331-EC2



9331-EK



9361-EK



9363-EK



9366-EK



9368-EK

Ears

Cu. In. Volume	Catalog Number	Component Description	Exterior Dimensions			UPC# 85339	Std. Pkg. Qty.	Std. Wt. (lb.)
			D	W	H			
9.0	9301-E	Ears, 2 wire clampss - bulk packed	1-3/4	2-3/8	3-1/4	10010	100	23
9.0	9301-EC2	Ears, 2 wire clamps - factory installed	1-3/4	2-3/8	3-1/4	10011	100	26
14.0	9331-E	Ears, Speed Klamps™- bulk packed	2-1/2	2-3/8	3-1/4	10235	100	28
14.0	9331-EC2	Ears, 2 wire clamps - factory installed	2-1/2	2-3/8	3-1/4	10236	100	31
14.0	9331-EK	Ears, Speed Klamps™ - factory installed	2-1/2	2-3/8	3-1/4	10239	100	28
16.0	9361-E	Ears, Speed Klamps™ - bulk packed	2-7/8	2-3/8	3-1/4	10555	100	29
16.0	9361-EC2	Ears, 2 wire clamps - factory installed	2-7/8	2-3/8	3-1/4	10560	100	33
16.0	9361-EK	Ears, Speed Klamps™ - factory installed	2-7/8	2-3/8	3-1/4	10561	100	29
16.0	9363-E	Ears, Speed Klamps™- bulk packed	2-27/32	2-3/8	3-1/4	10570	100	30
16.0	9363-EC2	Ears, 2 wire clamps - factory installed	2-27/32	2-3/8	3-1/4	10571	100	32
16.0	9363-EK	Ears, Speed Klamps™- factory installed	2-27/32	2-3/8	3-1/4	10576	100	30
18.0	9366-EK	Wide body box, ears, Speed Klamps™ - factory installed *Requires oversized device/receptacle plate	2-27/32	2-3/4	3-1/4	77003	100	32
18.0	9368-E	Ears, Speed Klamps™- bulk packed	3-3/16	2-3/8	3-1/4	76000	100	31
18.0	9368-EK	Ears, Speed Klamps™- factory installed	3-3/16	2-3/8	3-1/4	76003	100	32



9331-ES



9331-ESC2



9331-ESK



9361-ES



9361-ESC2



9361-ESK

Ears & Snap Brackets

Cu. In. Volume	Catalog Number	Component Description	Exterior Dimensions			UPC# 85339	Std. Pkg. Qty.	Std. Wt. (lb.)
			D	W	H			
14.0	9331-ES	Ears, snap bracket, Speed Klamps™ - bulk packed	2-1/2	2-3/8	3-1/4	10242	50	21
14.0	9331-ESC2	Ears, snap bracket, 2 wire clamps - factory installed	2-1/2	2-3/8	3-1/4	10244	50	23
14.0	9331-ESK	Ears, snap bracket, Speed Klamps™ - factory installed	2-1/2	2-3/8	3-1/4	10243	50	21
16.0	9361-ES	Ears, snap bracket, Speed Klamps™ - bulk packed	2-7/8	2-3/8	3-1/4	10562	50	22
16.0	9361-ESC2	Ears, snap bracket, 2 wire clamps - factory installed	2-7/8	2-3/8	3-1/4	10564	50	23
16.0	9361-ESK	Ears, snap bracket, Speed Klamps™ - factory installed	2-7/8	2-3/8	3-1/4	10566	50	23

All dimensions are in inches unless otherwise noted.
See page 7 for Attachment Coding suffix descriptions.

Old Work/Manufactured Housing Boxes

Flush-Device Box
UL File No. E30594



9301-E



9331-EC2



9331-EK



9361-EK



9363-EK



9366-EK



9368-EK

Ears

Cu. In. Volume	Catalog Number	Component Description	Exterior Dimensions			UPC# 85339	Std. Pkg. Qty.	Std. Wt. (lb.)
			D	W	H			
9.0	9301-E	Ears, 2 wire clampss - bulk packed	1-3/4	2-3/8	3-1/4	10010	100	23
9.0	9301-EC2	Ears, 2 wire clamps - factory installed	1-3/4	2-3/8	3-1/4	10011	100	26
14.0	9331-E	Ears, Speed Klamps™- bulk packed	2-1/2	2-3/8	3-1/4	10235	100	28
14.0	9331-EC2	Ears, 2 wire clamps - factory installed	2-1/2	2-3/8	3-1/4	10236	100	31
14.0	9331-EK	Ears, Speed Klamps™ - factory installed	2-1/2	2-3/8	3-1/4	10239	100	28
16.0	9361-E	Ears, Speed Klamps™ - bulk packed	2-7/8	2-3/8	3-1/4	10555	100	29
16.0	9361-EC2	Ears, 2 wire clamps - factory installed	2-7/8	2-3/8	3-1/4	10560	100	33
16.0	9361-EK	Ears, Speed Klamps™ - factory installed	2-7/8	2-3/8	3-1/4	10561	100	29
16.0	9363-E	Ears, Speed Klamps™- bulk packed	2-27/32	2-3/8	3-1/4	10570	100	30
16.0	9363-EC2	Ears, 2 wire clamps - factory installed	2-27/32	2-3/8	3-1/4	10571	100	32
16.0	9363-EK	Ears, Speed Klamps™- factory installed	2-27/32	2-3/8	3-1/4	10576	100	30
18.0	9366-EK	Wide body box, ears, Speed Klamps™ - factory installed *Requires oversized device/receptacle plate	2-27/32	2-3/4	3-1/4	77003	100	32
18.0	9368-E	Ears, Speed Klamps™- bulk packed	3-3/16	2-3/8	3-1/4	76000	100	31
18.0	9368-EK	Ears, Speed Klamps™- factory installed	3-3/16	2-3/8	3-1/4	76003	100	32



9331-ES



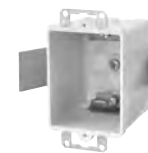
9331-ESC2



9331-ESK



9361-ES



9361-ESC2



9361-ESK

Ears & Snap Brackets

Cu. In. Volume	Catalog Number	Component Description	Exterior Dimensions			UPC# 85339	Std. Pkg. Qty.	Std. Wt. (lb.)
			D	W	H			
14.0	9331-ES	Ears, snap bracket, Speed Klamps™ - bulk packed	2-1/2	2-3/8	3-1/4	10242	50	21
14.0	9331-ESC2	Ears, snap bracket, 2 wire clamps - factory installed	2-1/2	2-3/8	3-1/4	10244	50	23
14.0	9331-ESK	Ears, snap bracket, Speed Klamps™ - factory installed	2-1/2	2-3/8	3-1/4	10243	50	21
16.0	9361-ES	Ears, snap bracket, Speed Klamps™ - bulk packed	2-7/8	2-3/8	3-1/4	10562	50	22
16.0	9361-ESC2	Ears, snap bracket, 2 wire clamps - factory installed	2-7/8	2-3/8	3-1/4	10564	50	23
16.0	9361-ESK	Ears, snap bracket, Speed Klamps™ - factory installed	2-7/8	2-3/8	3-1/4	10566	50	23

All dimensions are in inches unless otherwise noted.
See page 7 for Attachment Coding suffix descriptions.

Old Work/Manufactured Housing Boxes

Flush-Device Box
UL File No. E30594