

Industrial Specification Grade Manual Motor Controllers

30A, 600V/AC
Double-Pole & 3-Pole

Two-Position, Maintained Contact, Single Throw

Double-Pole, Single-Phase, 30 Amp

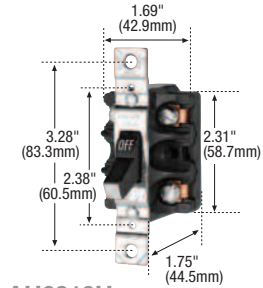


Rating A V	Description	Termination Style	Max. AWG Wire Size	Catalog No.	
30 600V/AC	Switch only	Front wired screw	#10 AWG	<input type="checkbox"/> AH6810U	
	Switch in NEMA Type 1 enclosure	Front wired screw	#10 AWG	<input type="checkbox"/> AH6810G	
	Switch in NEMA Type 3R enclosure	Front wired screw	#10 AWG	<input type="checkbox"/> AH6810W*	
	Switch in NEMA Type 3, 7 & 9 enclosure for hazardous enclosures Class I, Div. 1 & 2, Groups C, D Class II, Groups E, F, G	Front wired screw	#10 AWG	<input type="checkbox"/> AH6810E	

*For Canada, order Cat. No. AH6810WR
Type 3, 7, 9 enclosure: iron back box with galvanized and acrylic paint finish copperless aluminum

Horsepower Rated for Motor Loads per UL 508

	120V/AC	240V/AC	480V/AC	600V/AC
HP	2 HP	5 HP	7.5 HP	7.5 HP



AH6810U

Two-Position, Maintained Contact, Single Throw

3-Pole, 3-Phase, 30 Amp

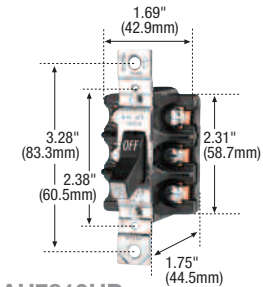


Rating A V	Description	Termination Style	Max. AWG Wire Size	Catalog No.	
30 600V/AC	Switch only	Front wired screw & clamp	#10 AWG	<input type="checkbox"/> AH7810UD	
	Switch with cover plate for flush mounting	Front wired screw & clamp	#10 AWG	<input type="checkbox"/> AH7810FD	
	Switch in NEMA Type 1 single-gang enclosure	Front wired screw & clamp	#10 AWG	<input type="checkbox"/> AH7810GD	
	Switch in NEMA Type 1 double-gang enclosure	Front wired screw & clamp	#10 AWG	<input type="checkbox"/> AH7810GDB	
	Switch in NEMA Type 3R enclosure	Front wired screw & clamp	#10 AWG	<input type="checkbox"/> AH7810WD	
	Switch in NEMA Type 3, 7 & 9 enclosure for hazardous enclosures Class I, Div. 1 & 2, Groups C, D Class II, Groups E, F, G	Front wired screw & clamp	#10 AWG	<input type="checkbox"/> AH7810ED	

Type 3, 7, 9 enclosure: iron back box with galvanized steel and acrylic paint finish copperless aluminum
Also available in Type 4X enclosure (see page D-25)

Horsepower Rated for Motor Loads per UL 508

	120V/AC	240V/AC	480V/AC	600V/AC
HP	3 HP	7.5 HP	15 HP	15 HP



AH7810UD



AH7810WD

Icon Key

NAFTA Compliant - see page O-30

Accessories for 30A Manual Motor Controllers

Description	Catalog No.	
Wet-location plastic 1-gang weather protective flush mount toggle switch cover	<input type="checkbox"/> S2983	
Cast aluminum single gang 3-hole powder coated back box	<input type="checkbox"/> 1113	



S2983



1113

Specification Information:

AH6800 & AH7800 Series: D-38

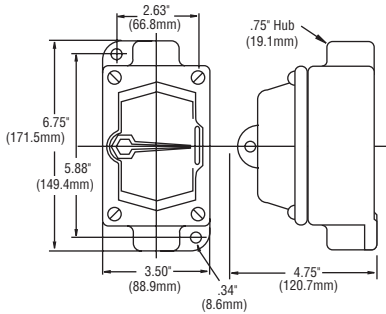
**Industrial Specification
 Grade Manual Motor
 Controllers**

20/30A, 600/250V/AC; 30A, 250V/AC; 40A, 600V/AC; 30A, 600V/AC
 10/20A, 250/125V/AC/DC; 20/30A, 250/125V/AC/DC
 Single-Phase & 3-Phase

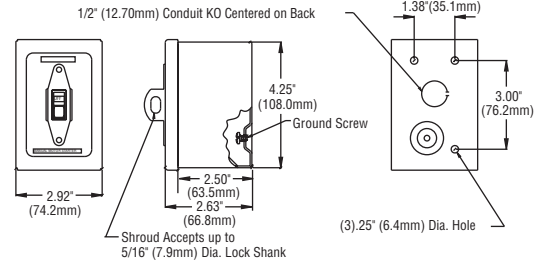
	Switch Type	Industrial Single-Phase & 3-Phase Maintained Contact Motor Controllers AH6800 & AH7800 Series	Industrial Single-Phase & 3-Phase Maintained Contact Motor Controllers AHMC200 & AHMC300 Series	Industrial 3-Position 2-Circuit Maintained & Momentary Contact Motor Controllers AH4300 & AH27900 Series
	Wiring Type	Back & side wire screw, front wired screw or front wired screw & clamp	Side wire, side wired screw & clamp, or side wired box lug	Side wired screw
	Testing & Code Compliance	• cULus Listed to UL 508, file no. E135083	• cULus Listed to UL 508, file no. E135083	<ul style="list-style-type: none"> Listed to UL 20, file no. E135162, except AH4300 series AH4300 series: UL recognized component
Specifications: Environmental	Flammability	Meets UL 94 requirements; V2 rated	Meets UL 94 requirements; V2 rated	Meets UL 94 requirements; V2 rated
	Temperature Rating	-20°C to 65°C (-4°F to 149°F)	-20°C to 65°C (-4°F to 149°F)	-20°C to 65°C (-4°F to 149°F)
Specifications: Electrical	Dielectric Voltage	Withstands 1500V per UL 20	Withstands 1500V per UL 20	Withstands 1500V per UL 20
	Current Interrupting	Yes, at full-rated current	Yes, at full-rated current	Yes, at full-rated current
	Temperature Rise	Max. 30°C (86°F) after 100 cycles of overload and 30,000 cycles of endurance testing	Max. 30°C (86°F) after 100 cycles of overload and 30,000 cycles of endurance testing	Max. 30°C (86°F) after 100 cycles of overload and 30,000 cycles of endurance testing
Specifications: Mechanical	Terminal Accommodation	#14 AWG - #10 AWG	#14 AWG - #8 AWG #14 AWG - #4 AWG	#14 AWG - #10 AWG
	Voltage Ratings	600V max	600V max	600V max
Materials:	Toggle	Glass-filled nylon	Glass-filled nylon	Thermoplastic, glass-filled nylon
	Top Housing	Glass-filled nylon	Glass-filled nylon	Thermoset
	Bottom Housing	Glass-filled nylon	Glass-filled nylon	Thermoset
	Strap	Plated steel	Plated steel	Plated steel
	Terminals	Copper alloy	Copper alloy	Copper alloy
	Terminal Screws	Plated brass	Brass	Brass
	Contacts	Silver alloy	Silver alloy	Silver plated copper
	Moveable Contact Arm	Copper alloy	Copper alloy	Silver plated copper

Enclosure Dimensional Data

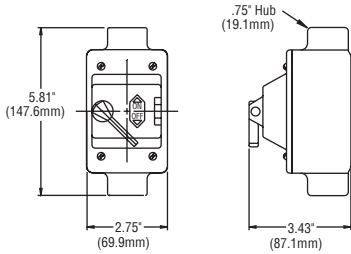
AH6810E, AH7810ED



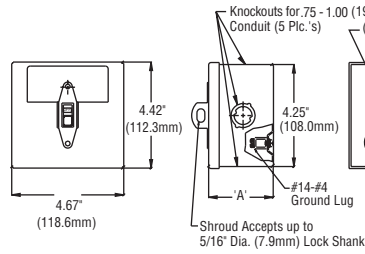
AHMC360L-1, AHMC260L-1, AH7810GD, AHMC340C-1, AHMC340L-1, AH6808GDAC, AH6810G, AHMC240C-1, AHMC240L-1, AH27940G, AHN1GD



AH6808WDAC

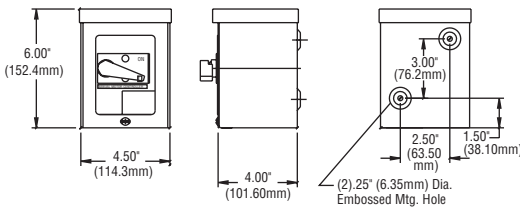


AH7810GDB, AHN1GD2 Dim A=2.63" (66.80mm)



AHN1GD2D Dim A=3.87" (98.30mm)

AHN3WD, AH6808WDAC, AH6810W, AHMC240C-3, AHMC240L-2, AHMC260L-3, AHMC340C-3, AHMC340L-2, AHMC360L-2



AH6808FDAC (plate only, no toggle guard) AH7810FD

