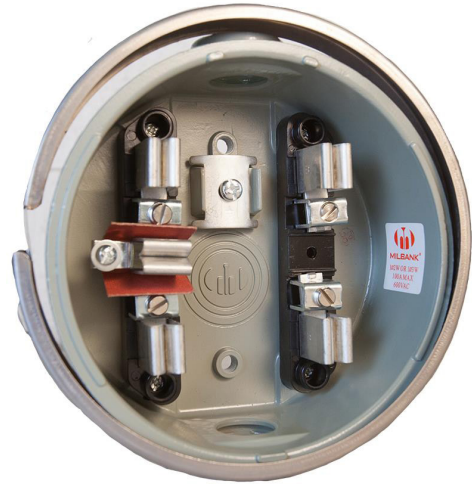




MILBANK
ENERGY AT WORK



AP2300-03-5T

Catalog Number	AP2300-03-5T	Jaw Quantity	5 Terminal
Marketing Product Description	5 Terminal Ring Type 1 In Hub	Bypass Type	No Bypass
UPC	784572110847	Number of Meter Positions	1 Position
Length (IN)	7.125	Equipment Ground	Triplex Ground
Width (IN)	2.25	Hub Opening	1 Inch Hub
Height (IN)	7.125	Line Side Wire Range	6 AWG - 350 kcmil
Brand Name	Milbank	Load Side Wire Range	12 - 1 AWG
Type	Ring Type Meter Socket	Number Of Receptacles	0
Application	Meter Socket		
Standard	Non UL Listed;Type 3R		
Voltage Rating	600 Volts Alternating Current		
Amperage Rating	100 Continuous Ampere		
Phase	1 Phase		
Frequency Rating	60 Hertz		
Size	7.125L x 2.25W x 7.125H		
Number Of Cutouts	0		
Cutout Size	No Main Breaker		
Cable Entry	Overhead		
Terminal	Single Mechanical		
Insulation	Glass Polyester		
Mounting	Surface Mount		
Enclosure	Aluminum with Powder Coat Finish		

Please consult serving utility for their requirements prior to ordering or installing, as specifications and approvals vary by utility and may require local electrical inspector approval. All installations must be installed by a licensed electrician and must comply with all national and local codes, laws and regulations. Milbank reserves the right to make changes in specifications and features shown without notice or obligation.



MILBANK[®]
ENERGY AT WORK

AP2300-03-5T



Catalog Number	AP2300-03-5T
Marketing Product Description	5 Terminal Ring Type 1 In Hub
UPC	784572110847
Length (IN)	7.125
Width (IN)	2.25
Height (IN)	7.125
Brand Name	Milbank
Type	Ring Type Meter Socket
Application	Meter Socket
Standard	Non UL Listed; Type 3R
Voltage Rating	600 Volts Alternating Current
Amperage Rating	100 Continuous Ampere
Phase	1 Phase
Frequency Rating	60 Hertz
Size	7.125L x 2.25W x 7.125H
Number Of Cutouts	0
Cutout Size	No Main Breaker
Cable Entry	Overhead
Terminal	Single Mechanical
Insulation	Glass Polyester
Mounting	Surface Mount
Enclosure	Aluminum with Powder Coat Finish

Jaw Quantity	5 Terminal
Bypass Type	No Bypass
Number of Meter Positions	1 Position
Equipment Ground	Triplex Ground
Hub Opening	1 Inch Hub
Line Side Wire Range	6 AWG - 350 kcmil
Load Side Wire Range	12 - 1 AWG
Number Of Receptacles	0

Please consult serving utility for their requirements prior to ordering or installing, as specifications and approvals vary by utility and may require local electrical inspector approval. All installations must be installed by a licensed electrician and must comply with all national and local codes, laws and regulations. Milbank reserves the right to make changes in specifications and features shown without notice or obligation.