

## Dual-Rated Mechanical Connectors

### Type ADR — ALCÜL™ Three-Conductor, Four-Hole Mount\*\*

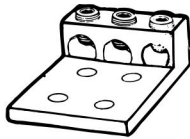


Fig. 1

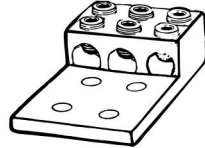


Fig. 2

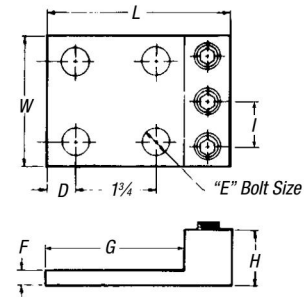


CAT. NO.	FIG.	CONDUCTOR RANGE (AL OR CU)		DIMENSIONS (IN.)							
		MAX.	MIN.	L	W	H	D	E	F	G	I
ADR02-34	1	2 Str.	14 AWG	2 <sup>3</sup> / <sub>16</sub>	1 <sup>5</sup> / <sub>8</sub>	5 <sup>7</sup> / <sub>8</sub>	1 <sup>1</sup> / <sub>32</sub>	5 <sup>1</sup> / <sub>16</sub>	3 <sup>1</sup> / <sub>16</sub>	1 <sup>1</sup> / <sub>16</sub>	9 <sup>1</sup> / <sub>16</sub>
ADR11-34	1	1/0 Str.	14 AWG	2 <sup>29</sup> / <sub>32</sub>	2	7 <sup>1</sup> / <sub>8</sub>	1 <sup>1</sup> / <sub>32</sub>	3 <sup>1</sup> / <sub>8</sub>	1 <sup>1</sup> / <sub>4</sub>	2 <sup>9</sup> / <sub>32</sub>	4 <sup>5</sup> / <sub>64</sub>
ADR31-34	1	3/0 Str.	6 Str.	4	2 <sup>13</sup> / <sub>16</sub>	1 <sup>1</sup> / <sub>16</sub>	5 <sup>7</sup> / <sub>8</sub>	1 <sup>1</sup> / <sub>2</sub>	5 <sup>1</sup> / <sub>16</sub>	3	3 <sup>1</sup> / <sub>32</sub>
ADR25-34*	1	250 kcmil	6 Str.	4 <sup>3</sup> / <sub>16</sub>	2 <sup>1</sup> / <sub>16</sub>	1 <sup>1</sup> / <sub>4</sub>	5 <sup>7</sup> / <sub>8</sub>	1 <sup>1</sup> / <sub>2</sub>	1 <sup>1</sup> / <sub>4</sub>	3 <sup>1</sup> / <sub>16</sub>	3 <sup>1</sup> / <sub>32</sub>
ADR35-34*	1	350 kcmil	6 Str.	4 <sup>3</sup> / <sub>16</sub>	3 <sup>3</sup> / <sub>16</sub>	1 <sup>1</sup> / <sub>4</sub>	5 <sup>7</sup> / <sub>8</sub>	1 <sup>1</sup> / <sub>2</sub>	1 <sup>1</sup> / <sub>4</sub>	3 <sup>1</sup> / <sub>16</sub>	1 <sup>1</sup> / <sub>32</sub>
ADR50-34*	1	500 kcmil	2 Str.	4 <sup>11</sup> / <sub>16</sub>	3 <sup>3</sup> / <sub>4</sub>	1 <sup>1</sup> / <sub>16</sub>	5 <sup>7</sup> / <sub>8</sub>	1 <sup>1</sup> / <sub>2</sub>	7 <sup>1</sup> / <sub>16</sub>	3 <sup>5</sup> / <sub>16</sub>	1 <sup>1</sup> / <sub>4</sub>
ADR60-34D	2	600 kcmil	2 Str.	5 <sup>5</sup> / <sub>16</sub>	4 <sup>3</sup> / <sub>16</sub>	1 <sup>1</sup> / <sub>2</sub>	5 <sup>7</sup> / <sub>8</sub>	1 <sup>1</sup> / <sub>2</sub>	3 <sup>1</sup> / <sub>8</sub>	3 <sup>1</sup> / <sub>16</sub>	1 <sup>7</sup> / <sub>16</sub>
ADR80-34*	2	800 kcmil	300 kcmil	6 <sup>3</sup> / <sub>16</sub>	4 <sup>1</sup> / <sub>2</sub>	1 <sup>1</sup> / <sub>8</sub>	5 <sup>7</sup> / <sub>8</sub>	1 <sup>1</sup> / <sub>2</sub>	5 <sup>1</sup> / <sub>16</sub>	3 <sup>1</sup> / <sub>16</sub>	1 <sup>9</sup> / <sub>16</sub>
ADR99-34*	2	1,000 kcmil	500 kcmil	6 <sup>3</sup> / <sub>16</sub>	4 <sup>3</sup> / <sub>4</sub>	1 <sup>1</sup> / <sub>8</sub>	5 <sup>7</sup> / <sub>8</sub>	1 <sup>1</sup> / <sub>2</sub>	9 <sup>1</sup> / <sub>16</sub>	3 <sup>1</sup> / <sub>16</sub>	1 <sup>4</sup> / <sub>64</sub>

\* UL Listed.

\*\* NEMA Spacing: 1<sup>3</sup>/<sub>4</sub>" centers except ADR02-34 (7<sup>1</sup>/<sub>8</sub>" centers) and ADR11-34 (1" centers).  
Connectors accommodating conductors 600 kcmil and larger have double row of set screws.

UL 486B, AL9CU



### Type ADR — ALCÜL™ Four-Conductor, Four-Hole Mount\*



Fig. 1

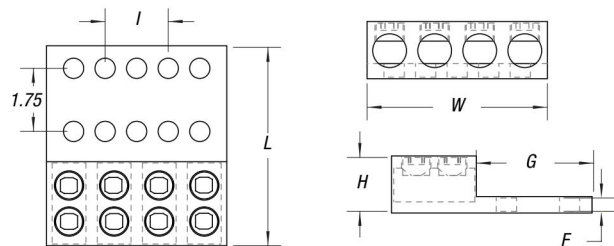


Fig. 2

CAT. NO.	CONDUCTOR RANGE		MOUNTING HOLES				G	F
	MAX.	MIN.	L	W	H	HOLES		
ADR25-44	250	#6	4.00	4.06	1.19	1.75	3.00	.31
ADR35-44	350	#6	4.31	3.94	1.38	1.75	3.00	.31
ADR60-44D	600	#2	5.50	5.00	1.50	1.75	3.25	.38
ADR80-44D	800	350	5.97	6.00	1.81	1.75	3.63	.50

\* NEMA Spacing: 1<sup>3</sup>/<sub>4</sub>" centers.

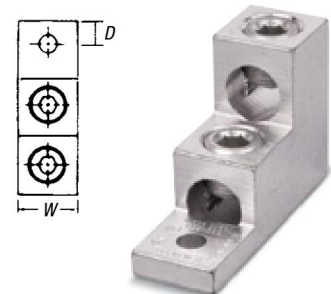
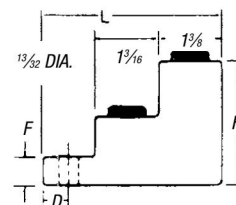
Connectors accommodating conductors 600 kcmil and larger have double row of set screws (D Suffix).



### Type ASL — ALCÜL™ Two-Conductor, One-Hole Mount



CAT. NO.	CONDUCTOR RANGE (AL OR CU)		DIMENSIONS (IN.)					MTG. HOLE DIA.
	MAX.	MIN.	L	W	H	D	F	
ASL30-21	300 kcmil	6 Str.	3	1 <sup>1</sup> / <sub>8</sub>	2	1 <sup>5</sup> / <sub>32</sub>	1 <sup>1</sup> / <sub>2</sub>	5 <sup>1</sup> / <sub>16</sub>



## Dual-Rated Mechanical Connectors

### Type ADR — ALCÜL™ Three-Conductor, Four-Hole Mount\*\*

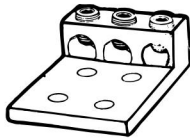


Fig. 1

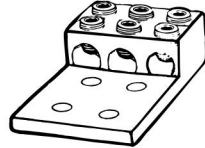


Fig. 2

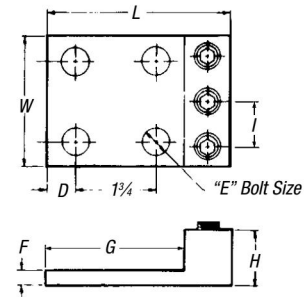


CAT. NO.	FIG.	CONDUCTOR RANGE (AL OR CU)		DIMENSIONS (IN.)							
		MAX.	MIN.	L	W	H	D	E	F	G	I
ADR02-34	1	2 Str.	14 AWG	2 <sup>3</sup> / <sub>16</sub>	1 <sup>5</sup> / <sub>8</sub>	5 <sup>7</sup> / <sub>8</sub>	1 <sup>1</sup> / <sub>32</sub>	5 <sup>1</sup> / <sub>16</sub>	3 <sup>1</sup> / <sub>16</sub>	1 <sup>1</sup> / <sub>16</sub>	9 <sup>1</sup> / <sub>16</sub>
ADR11-34	1	1/0 Str.	14 AWG	2 <sup>29</sup> / <sub>32</sub>	2	7 <sup>1</sup> / <sub>8</sub>	1 <sup>1</sup> / <sub>32</sub>	3 <sup>1</sup> / <sub>8</sub>	1 <sup>1</sup> / <sub>4</sub>	2 <sup>9</sup> / <sub>32</sub>	4 <sup>5</sup> / <sub>64</sub>
ADR31-34	1	3/0 Str.	6 Str.	4	2 <sup>13</sup> / <sub>16</sub>	1 <sup>1</sup> / <sub>16</sub>	5 <sup>7</sup> / <sub>8</sub>	1 <sup>1</sup> / <sub>2</sub>	5 <sup>1</sup> / <sub>16</sub>	3	3 <sup>1</sup> / <sub>32</sub>
ADR25-34*	1	250 kcmil	6 Str.	4 <sup>3</sup> / <sub>16</sub>	2 <sup>1</sup> / <sub>16</sub>	1 <sup>1</sup> / <sub>4</sub>	5 <sup>7</sup> / <sub>8</sub>	1 <sup>1</sup> / <sub>2</sub>	1 <sup>1</sup> / <sub>4</sub>	3 <sup>1</sup> / <sub>16</sub>	3 <sup>1</sup> / <sub>32</sub>
ADR35-34*	1	350 kcmil	6 Str.	4 <sup>3</sup> / <sub>16</sub>	3 <sup>3</sup> / <sub>16</sub>	1 <sup>1</sup> / <sub>4</sub>	5 <sup>7</sup> / <sub>8</sub>	1 <sup>1</sup> / <sub>2</sub>	1 <sup>1</sup> / <sub>4</sub>	3 <sup>1</sup> / <sub>16</sub>	1 <sup>1</sup> / <sub>32</sub>
ADR50-34*	1	500 kcmil	2 Str.	4 <sup>11</sup> / <sub>16</sub>	3 <sup>3</sup> / <sub>4</sub>	1 <sup>1</sup> / <sub>16</sub>	5 <sup>7</sup> / <sub>8</sub>	1 <sup>1</sup> / <sub>2</sub>	7 <sup>1</sup> / <sub>16</sub>	3 <sup>5</sup> / <sub>16</sub>	1 <sup>1</sup> / <sub>4</sub>
ADR60-34D	2	600 kcmil	2 Str.	5 <sup>5</sup> / <sub>16</sub>	4 <sup>3</sup> / <sub>16</sub>	1 <sup>1</sup> / <sub>2</sub>	5 <sup>7</sup> / <sub>8</sub>	1 <sup>1</sup> / <sub>2</sub>	3 <sup>1</sup> / <sub>8</sub>	3 <sup>1</sup> / <sub>16</sub>	1 <sup>7</sup> / <sub>16</sub>
ADR80-34*	2	800 kcmil	300 kcmil	6 <sup>3</sup> / <sub>16</sub>	4 <sup>1</sup> / <sub>2</sub>	1 <sup>1</sup> / <sub>8</sub>	5 <sup>7</sup> / <sub>8</sub>	1 <sup>1</sup> / <sub>2</sub>	5 <sup>1</sup> / <sub>16</sub>	3 <sup>1</sup> / <sub>16</sub>	1 <sup>9</sup> / <sub>16</sub>
ADR99-34*	2	1,000 kcmil	500 kcmil	6 <sup>3</sup> / <sub>16</sub>	4 <sup>3</sup> / <sub>4</sub>	1 <sup>1</sup> / <sub>8</sub>	5 <sup>7</sup> / <sub>8</sub>	1 <sup>1</sup> / <sub>2</sub>	9 <sup>1</sup> / <sub>16</sub>	3 <sup>1</sup> / <sub>16</sub>	1 <sup>4</sup> / <sub>64</sub>

\* UL Listed.

\*\* NEMA Spacing: 1<sup>3</sup>/<sub>4</sub>" centers except ADR02-34 (7<sup>1</sup>/<sub>8</sub>" centers) and ADR11-34 (1" centers).  
Connectors accommodating conductors 600 kcmil and larger have double row of set screws.

UL 486B, AL9CU



### Type ADR — ALCÜL™ Four-Conductor, Four-Hole Mount\*



Fig. 1

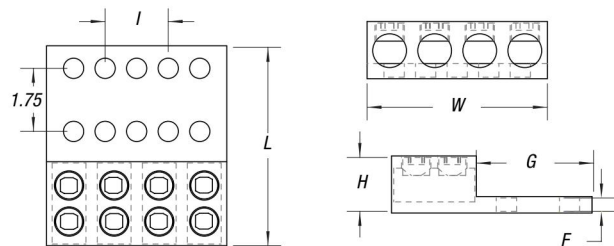


Fig. 2

CAT. NO.	CONDUCTOR RANGE		MOUNTING HOLES				G	F
	MAX.	MIN.	L	W	H	HOLES		
ADR25-44	250	#6	4.00	4.06	1.19	1.75	3.00	.31
ADR35-44	350	#6	4.31	3.94	1.38	1.75	3.00	.31
ADR60-44D	600	#2	5.50	5.00	1.50	1.75	3.25	.38
ADR80-44D	800	350	5.97	6.00	1.81	1.75	3.63	.50

\* NEMA Spacing: 1<sup>3</sup>/<sub>4</sub>" centers.

Connectors accommodating conductors 600 kcmil and larger have double row of set screws (D Suffix).



### Type ASL — ALCÜL™ Two-Conductor, One-Hole Mount



CAT. NO.	CONDUCTOR RANGE (AL OR CU)		DIMENSIONS (IN.)					MTG. HOLE DIA.
	MAX.	MIN.	L	W	H	D	F	
ASL30-21	300 kcmil	6 Str.	3	1 <sup>1</sup> / <sub>8</sub>	2	1 <sup>5</sup> / <sub>32</sub>	1 <sup>1</sup> / <sub>2</sub>	5 <sup>1</sup> / <sub>16</sub>

