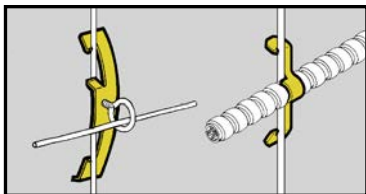


Conduit & cable

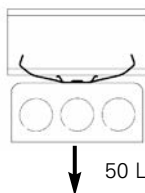


- BW2 and BW6 support #10-24 or 1/4"-20 threaded bridle rings and provide attachment for electrical boxes.
- BW2S & BW6S are provided with one each 1/4"-20 x 3/8" screw and hex nut.
- BW4 supports cables from #12 thru #8 wire.

Rod & Wire Fasteners



| UPC/Part Number | Catalog Number | Drop Rod/ Wire Size | Flange Thickness | Box Qty. |
|-----------------|----------------|---|---------------------|----------|
| 78101119700 | BW2 | #12 wire thru 1/4" plain or threaded rod | 1/8" - 3/8" | 100 |
| 78205140156 | BW2S | #12 wire thru 1/4" plain or threaded rod | 1/8" - 3/8" | 100 |
| 78101195516 | BW6 | 3/8" plain or threaded rod | 3/8" - 7/16" | 100 |
| 78205140157 | BW6S | 3/8" plain or threaded rod | 3/8" - 7/16" | 100 |



Static Load Capacity



| UPC/Part Number | Catalog Number | Description | Box Qty. |
|-----------------|----------------|-----------------------------|----------|
| 78101119705 | BW4 | Multi-size Wire Fastener | 100 |

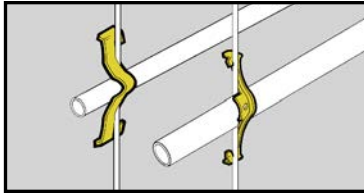


| MC/AC Cable Size | #12 Wire | #10 Wire | #8 & #9 Wire |
|---------------------|-------------|-------------|-----------------|
| 14/2 Cable | BW4 | BW4 | BW4 |
| 14/3 Cable | BW4 | BW4 | BW4 |
| 12/2 Cable | BW4 | BW4 | BW4 |
| 12/3 Cable | BW4 | BW-8 | BW-8 |

BW4 is designed for positioning only. No load rating.

Note: An independent means of support is required by NEC Article 300.11. Refer to pages 221-222 for additional support methods.

Read safety/installation instruction sheets in packages before use.



- See BX8 and BX18 for a better solution.
- Attaches conduit to wire rods or flanges.
- Can be used for flexible metallic tubing or armored cable.

Rod & Wire Fasteners



BW-8



BW-16

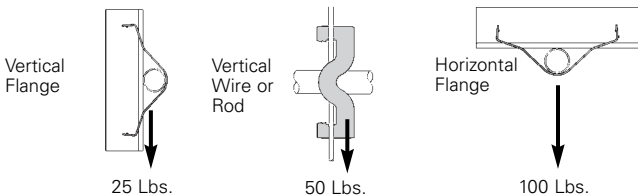


| UPC/Part Number | Catalog Number | Box Qty. |
|-----------------|----------------|----------|
| 78101119710 | BW-8 | 100 |
| 78101119715 | BW-12 | 100 |
| 78101119720 | BW-16 | 100 |
| 78101119725 | BW-20 | 100 |

| Conduit Size | #10 & #12 Wire | #8 & #9 Wire | 3/16" & 1/4" Rod | 1/8" to 1/4" Flange | 5/16" to 3/8" Flange | 7/16" to 1/2" Flange |
|--------------|----------------|--------------|------------------|---------------------|----------------------|----------------------|
| 1/2" EMT | BW-8 | BW-8 | BW-8 | BW-8 | BW-12 | BW-12 |
| 1/2" Rigid | BW-8 | BW-12 | BW-12 | BW-12 | BW-12 | BW-16 |
| 3/4" EMT | BW-12 | BW-12 | BW-12 | BW-12 | BW-16 | BW-16 |
| 3/4" Rigid | BW-12 | BW-12 | BW-16 | BW-16 | BW-20* | BW-20* |
| 1" EMT | — | BW-16 | BW-16 | BW-16 | BW-20* | BW-20* |
| 1" Rigid | — | — | — | BW-20* | BW-20* | BW-20* |
| 1 1/4" EMT | — | BW-20 | BW-20 | BW-20 | — | — |

*Note: For horizontal applications only.

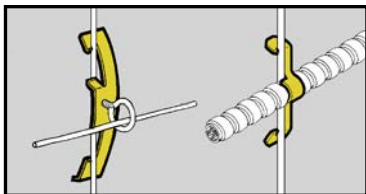
Static Load Capacity



Note: An independent means of support is required by NEC Article 300.11. Refer to pages 221-222 for additional support methods.

Read safety/installation instruction sheets in packages before use.

Conduit & cable

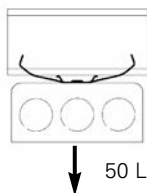


- BW2 and BW6 support #10-24 or 1/4"-20 threaded bridle rings and provide attachment for electrical boxes.
- BW2S & BW6S are provided with one each 1/4"-20 x 3/8" screw and hex nut.
- BW4 supports cables from #12 thru #8 wire.

Rod & Wire Fasteners



| UPC/Part Number | Catalog Number | Drop Rod/ Wire Size | Flange Thickness | Box Qty. |
|-----------------|----------------|---|---------------------|----------|
| 78101119700 | BW2 | #12 wire thru 1/4" plain or threaded rod | 1/8" - 3/8" | 100 |
| 78205140156 | BW2S | #12 wire thru 1/4" plain or threaded rod | 1/8" - 3/8" | 100 |
| 78101195516 | BW6 | 3/8" plain or threaded rod | 3/8" - 7/16" | 100 |
| 78205140157 | BW6S | 3/8" plain or threaded rod | 3/8" - 7/16" | 100 |



Static Load Capacity



| UPC/Part Number | Catalog Number | Description | Box Qty. |
|-----------------|----------------|-----------------------------|----------|
| 78101119705 | BW4 | Multi-size Wire Fastener | 100 |

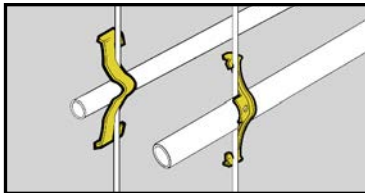


| MC/AC Cable Size | #12 Wire | #10 Wire | #8 & #9 Wire |
|---------------------|-------------|-------------|-----------------|
| 14/2 Cable | BW4 | BW4 | BW4 |
| 14/3 Cable | BW4 | BW4 | BW4 |
| 12/2 Cable | BW4 | BW4 | BW4 |
| 12/3 Cable | BW4 | BW-8 | BW-8 |

BW4 is designed for positioning only. No load rating.

Note: An independent means of support is required by NEC Article 300.11. Refer to pages 221-222 for additional support methods.

Read safety/installation instruction sheets in packages before use.



- See BX8 and BX18 for a better solution.
- Attaches conduit to wire rods or flanges.
- Can be used for flexible metallic tubing or armored cable.

Rod & Wire Fasteners



BW-8



BW-16

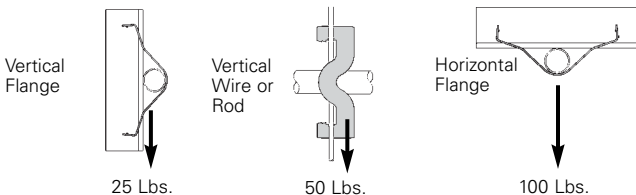


| UPC/Part Number | Catalog Number | Box Qty. |
|-----------------|----------------|----------|
| 78101119710 | BW-8 | 100 |
| 78101119715 | BW-12 | 100 |
| 78101119720 | BW-16 | 100 |
| 78101119725 | BW-20 | 100 |

| Conduit Size | #10 & #12 Wire | #8 & #9 Wire | 3/16" & 1/4" Rod | 1/8" to 1/4" Flange | 5/16" to 3/8" Flange | 7/16" to 1/2" Flange |
|--------------|----------------|--------------|------------------|---------------------|----------------------|----------------------|
| 1/2" EMT | BW-8 | BW-8 | BW-8 | BW-8 | BW-12 | BW-12 |
| 1/2" Rigid | BW-8 | BW-12 | BW-12 | BW-12 | BW-12 | BW-16 |
| 3/4" EMT | BW-12 | BW-12 | BW-12 | BW-12 | BW-16 | BW-16 |
| 3/4" Rigid | BW-12 | BW-12 | BW-16 | BW-16 | BW-20* | BW-20* |
| 1" EMT | — | BW-16 | BW-16 | BW-16 | BW-20* | BW-20* |
| 1" Rigid | — | — | — | BW-20* | BW-20* | BW-20* |
| 1 1/4" EMT | — | BW-20 | BW-20 | BW-20 | — | — |

*Note: For horizontal applications only.

Static Load Capacity



Note: An independent means of support is required by NEC Article 300.11. Refer to pages 221-222 for additional support methods.

Read safety/installation instruction sheets in packages before use.