

3 3/4" ROUND OLD WORK BOX

C118WAC | [Pass & Seymour](#)

FEATURES & BENEFITS

3 3/4" Round Old Work Box with Swing brackets for mounting that adjust from 1 1/4" down to 1/8". Four Auto/Clamps, Includes Device mounting holes. 50 pack.



- Box designed so mounting strap of the device, with plaster ears removed, fits flush, allowing use of standard depth wall plate without unsightly gap between plate and wall surface.
- Swing out wing brackets permit installation of box in wall with 1 1/4 inch thick wallboard down to 1/8 inch thick paneling.
- New longer swing brackets have greater reach to clamp onto oversize cutouts.
- Made of high impact thermoplastic.
- Combination slotted/Phillips head swing bracket screws.
- Include exclusive Auto/Clamp feature.
- Suitable for in-wall use.
- Suitable for in-ceiling use for supporting weights up to up to 6 lbs.
- Includes device mounting holes.
- For covering patents, see www.legrand.us/patents.

SPECIFICATIONS

GENERAL INFO

Size: 3 1/4"

Type: Round Old Work Box

Special Features: Round

LISTING AGENCIES/THIRD PARTY CERTIFICATIONS

RoHS: Yes
CSA Listing Info: No
CUL Listing No: No
cULus: No
cURus: No
Federal Spec: No
UL Listing No: Yes
UN SPSC: 39121308
UR: No

DIMENSIONS

Depth (US): 2.6875
Diameter (US): 3.75
Volume: 18.0

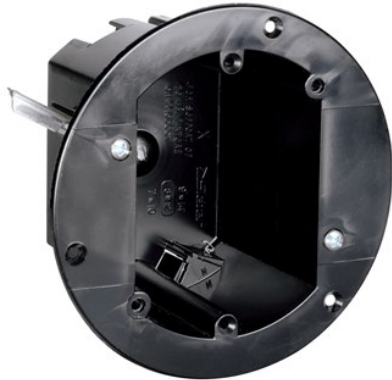
TECHNICAL INFORMATION

Material: Plastic
Mounting: Captive mounting nails
Shape: round

BUY AMERICAN ACT COMPLIANCE

Country Of Origin: UNITED STATES OF AMERICA
Buy American Act Status: Buy American Act Compliant





3 3/4" ROUND OLD WORK BOX

C118WAC | [Pass & Seymour](#)

FEATURES & BENEFITS

3 3/4" Round Old Work Box with Swing brackets for mounting that adjust from 1 1/4" down to 1/8". Four Auto/Clamps, Includes Device mounting holes. 50 pack.



- Box designed so mounting strap of the device, with plaster ears removed, fits flush, allowing use of standard depth wall plate without unsightly gap between plate and wall surface.
- Swing out wing brackets permit installation of box in wall with 1 1/4 inch thick wallboard down to 1/8 inch thick paneling.
- New longer swing brackets have greater reach to clamp onto oversize cutouts.
- Made of high impact thermoplastic.
- Combination slotted/Phillips head swing bracket screws.
- Include exclusive Auto/Clamp feature.
- Suitable for in-wall use.
- Suitable for in-ceiling use for supporting weights up to up to 6 lbs.
- Includes device mounting holes.
- For covering patents, see www.legrand.us/patents.

SPECIFICATIONS

GENERAL INFO

Size: 3 1/4"

Type: Round Old Work Box

Special Features: Round

LISTING AGENCIES/THIRD PARTY CERTIFICATIONS

RoHS: Yes
CSA Listing Info: No
CUL Listing No: No
cULus: No
cURus: No
Federal Spec: No
UL Listing No: Yes
UN SPSC: 39121308
UR: No

DIMENSIONS

Depth (US): 2.6875
Diameter (US): 3.75
Volume: 18.0

TECHNICAL INFORMATION

Material: Plastic
Mounting: Captive mounting nails
Shape: round

BUY AMERICAN ACT COMPLIANCE

Country Of Origin: UNITED STATES OF AMERICA
Buy American Act Status: Buy American Act Compliant

