

Straight-Sided Utility Channel

FEATURES

- Die formed steel housing with heat sink embossments for cooler running ballasts
- Ballast cover retained by ¼ turn fasteners
- Individual or row mounting, surface or suspended
- Channel ends double as joiners
- All metal parts are treated with a five stage phosphate bonding process and finished with baked white enamel
- UL listed 1598, cUL or CSA. Damp Location standard



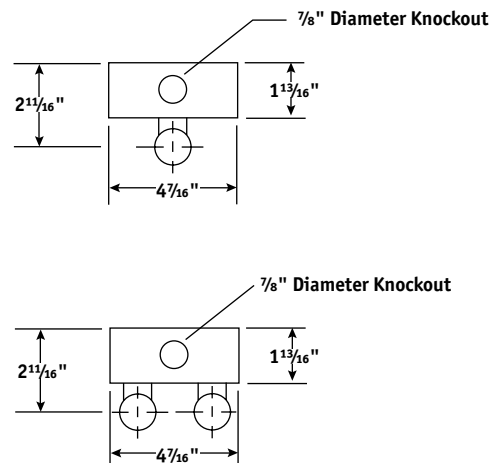
STRIPLIGHTS

ORDERING INFORMATION

| MODEL | SIZE | NO. OF LAMPS IN CROSS SECTION | LAMP TYPE | BALLAST | VOLTAGE | OPTIONS |
|--|---|--|---|---|---------------------------------------|---|
| CS Straight-Sided Utility Channel | 2 2' 3 3' 4 4' 6 6' 8 8' 16 16' (Two housings) | 1 One 2 Two 3 Three See Product Availability table below. | 14 2', T5: 14 Watt 17 2', T8: 17 Watt 21 3', T5: 21 Watt 24 2', T5HO: 24 Watt 25 3', T8: 25 Watt 28 4', T5: 28 Watt 32 4', T8: 32, 30, 28 or 25 Watt 39 3', T5HO: 39 Watt 54 4', T5HO: 54 or 51 Watt 96 8', T12: 75 or 60 Watt 96T8 8', T8: 59 Watt | NOTE: See Technical Section for other ballast options. E Electronic T8, Instant Start 3E 3-Lamp Electronic T8, Instant Start 4E 4-Lamp Electronic T8, Instant Start 24E (1) 2-Lamp and (1) 4-Lamp Electronic T8, Instant Start EP Electronic T5 or T8, Programmed Start 3EP 3-Lamp Electronic T5 or T8, Programmed Start 4EP 4-Lamp Electronic T5HO (N/A 347V) or T8, Programmed Start | U 120V-277V 347 347V | BC1 Branch Circuit Wiring, Single Circuit (For more branch circuit wiring options see page 113) GLR Fast Blow Fuse EL Emergency Battery Pack PAF Paint After Fabrication NYC NYC Compliant NYCU NYC Compliant, Union Label |
| ACCESSORIES (ORDER SEPARATELY) | | | | | | |
| CSWG3 3' Wire Guard | | | | | | |
| CSWG4 4' Wire Guard | | | | | | |
| CSR4 4' Symmetric Reflector | | | | | | |
| CSRA4 4' Asymmetric Reflector | | | | | | |
| CSRU4 4' Symmetric Reflector 5% Uplight | | | | | | |
| S18 18" Stem, 8° Swivel Stem and Canopy | | | | | | |
| SS18 18", 45° Swivel Stem, and Canopy | | | | | | |
| CSHC Chain Hanger Assembly | | | | | | |

PRODUCT AVAILABILITY

| SIZE | NO. OF LAMPS IN CROSS SECTION | NO. OF LAMPS IN FIXTURE | LAMP TYPE | WIDTH | LENGTH | HEIGHT |
|------|-------------------------------|-------------------------|------------|----------------------------------|--------|-----------------------------------|
| 2' | 1 | 1 | 14, 17, 24 | 4 ⁷ / ₁₆ " | 24" | 1 ¹³ / ₁₆ " |
| | 2 | 2 | 14, 17, 24 | 4 ⁷ / ₁₆ " | 24" | 1 ¹³ / ₁₆ " |
| | 3 | 3 | 17 | 4 ⁷ / ₁₆ " | 24" | 1 ¹³ / ₁₆ " |
| 3' | 1 | 1 | 21, 25, 39 | 4 ⁷ / ₁₆ " | 36" | 1 ¹³ / ₁₆ " |
| | 2 | 2 | 21, 25, 39 | 4 ⁷ / ₁₆ " | 36" | 1 ¹³ / ₁₆ " |
| | 3 | 3 | 25 | 4 ⁷ / ₁₆ " | 36" | 1 ¹³ / ₁₆ " |
| 4' | 1 | 1 | 28, 32, 54 | 4 ⁷ / ₁₆ " | 48" | 1 ¹³ / ₁₆ " |
| | 2 | 2 | 28, 32, 54 | 4 ⁷ / ₁₆ " | 48" | 1 ¹³ / ₁₆ " |
| | 3 | 3 | 28, 32, 54 | 4 ⁷ / ₁₆ " | 48" | 1 ¹³ / ₁₆ " |
| 6' | 1 | 1 | 21, 25, 39 | 4 ⁷ / ₁₆ " | 72" | 1 ¹³ / ₁₆ " |
| | 2 | 2 | 21, 25, 39 | 4 ⁷ / ₁₆ " | 72" | 1 ¹³ / ₁₆ " |
| | 3 | 6 | 21, 25, 39 | 4 ⁷ / ₁₆ " | 72" | 1 ¹³ / ₁₆ " |
| 8' | 1 | 2 | 28, 32, 54 | 4 ⁷ / ₁₆ " | 96" | 1 ¹³ / ₁₆ " |
| | 1 | 1 | 54, 96T8 | 4 ⁷ / ₁₆ " | 96" | 1 ¹³ / ₁₆ " |
| | 2 | 4 | 28, 32, 54 | 4 ⁷ / ₁₆ " | 96" | 1 ¹³ / ₁₆ " |
| | 2 | 2 | 54, 96T8 | 4 ⁷ / ₁₆ " | 96" | 1 ¹³ / ₁₆ " |
| | 2 | 2 | 28, 32 | 4 ⁷ / ₁₆ " | 96" | 1 ¹³ / ₁₆ " |
| | 3 | 6 | 28, 32 | 4 ⁷ / ₁₆ " | 96" | 1 ¹³ / ₁₆ " |
| 16' | 1 | 4 | 28, 32, 54 | 4 ⁷ / ₁₆ " | 192" | 1 ¹³ / ₁₆ " |
| | 1 | 2 | 54, 96T8 | 4 ⁷ / ₁₆ " | 192" | 1 ¹³ / ₁₆ " |
| | 2 | 8 | 28, 32, 54 | 4 ⁷ / ₁₆ " | 192" | 1 ¹³ / ₁₆ " |
| | 2 | 4 | 54, 96T8 | 4 ⁷ / ₁₆ " | 192" | 1 ¹³ / ₁₆ " |



Straight-Sided Utility Channel

FEATURES

- Die formed steel housing with heat sink embossments for cooler running ballasts
- Ballast cover retained by ¼ turn fasteners
- Individual or row mounting, surface or suspended
- Channel ends double as joiners
- All metal parts are treated with a five stage phosphate bonding process and finished with baked white enamel
- UL listed 1598, cUL or CSA. Damp Location standard



STRIPLIGHTS

ORDERING INFORMATION

| MODEL | SIZE | NO. OF LAMPS IN CROSS SECTION | LAMP TYPE | BALLAST | VOLTAGE | OPTIONS |
|--|---|--|---|---|---------------------------------------|---|
| CS Straight-Sided Utility Channel | 2 2' 3 3' 4 4' 6 6' 8 8' 16 16' (Two housings) | 1 One 2 Two 3 Three See Product Availability table below. | 14 2', T5: 14 Watt 17 2', T8: 17 Watt 21 3', T5: 21 Watt 24 2', T5HO: 24 Watt 25 3', T8: 25 Watt 28 4', T5: 28 Watt 32 4', T8: 32, 30, 28 or 25 Watt 39 3', T5HO: 39 Watt 54 4', T5HO: 54 or 51 Watt 96 8', T12: 75 or 60 Watt 96T8 8', T8: 59 Watt | NOTE: See Technical Section for other ballast options. E Electronic T8, Instant Start 3E 3-Lamp Electronic T8, Instant Start 4E 4-Lamp Electronic T8, Instant Start 24E (1) 2-Lamp and (1) 4-Lamp Electronic T8, Instant Start EP Electronic T5 or T8, Programmed Start 3EP 3-Lamp Electronic T5 or T8, Programmed Start 4EP 4-Lamp Electronic T5HO (N/A 347V) or T8, Programmed Start | U 120V-277V 347 347V | BC1 Branch Circuit Wiring, Single Circuit (For more branch circuit wiring options see page 113) GLR Fast Blow Fuse EL Emergency Battery Pack PAF Paint After Fabrication NYC NYC Compliant NYCU NYC Compliant, Union Label |

| ACCESSORIES (ORDER SEPARATELY) | |
|--------------------------------|-------------------------------------|
| CSWG3 | 3' Wire Guard |
| CSWG4 | 4' Wire Guard |
| CSR4 | 4' Symmetric Reflector |
| CSRA4 | 4' Asymmetric Reflector |
| CSRU4 | 4' Symmetric Reflector 5% Uplight |
| S18 | 18" Stem, 8° Swivel Stem and Canopy |
| SS18 | 18", 45° Swivel Stem, and Canopy |
| CSHC | Chain Hanger Assembly |

PRODUCT AVAILABILITY

| SIZE | NO. OF LAMPS IN CROSS SECTION | NO. OF LAMPS IN FIXTURE | LAMP TYPE | WIDTH | LENGTH | HEIGHT |
|------|-------------------------------|-------------------------|------------|----------------------------------|--------|-----------------------------------|
| 2' | 1 | 1 | 14, 17, 24 | 4 ⁷ / ₁₆ " | 24" | 1 ¹³ / ₁₆ " |
| | 2 | 2 | 14, 17, 24 | 4 ⁷ / ₁₆ " | 24" | 1 ¹³ / ₁₆ " |
| | 3 | 3 | 17 | 4 ⁷ / ₁₆ " | 24" | 1 ¹³ / ₁₆ " |
| 3' | 1 | 1 | 21, 25, 39 | 4 ⁷ / ₁₆ " | 36" | 1 ¹³ / ₁₆ " |
| | 2 | 2 | 21, 25, 39 | 4 ⁷ / ₁₆ " | 36" | 1 ¹³ / ₁₆ " |
| | 3 | 3 | 25 | 4 ⁷ / ₁₆ " | 36" | 1 ¹³ / ₁₆ " |
| 4' | 1 | 1 | 28, 32, 54 | 4 ⁷ / ₁₆ " | 48" | 1 ¹³ / ₁₆ " |
| | 2 | 2 | 28, 32, 54 | 4 ⁷ / ₁₆ " | 48" | 1 ¹³ / ₁₆ " |
| | 3 | 3 | 28, 32, 54 | 4 ⁷ / ₁₆ " | 48" | 1 ¹³ / ₁₆ " |
| 6' | 1 | 1 | 21, 25, 39 | 4 ⁷ / ₁₆ " | 72" | 1 ¹³ / ₁₆ " |
| | 2 | 2 | 21, 25, 39 | 4 ⁷ / ₁₆ " | 72" | 1 ¹³ / ₁₆ " |
| | 3 | 6 | 21, 25, 39 | 4 ⁷ / ₁₆ " | 72" | 1 ¹³ / ₁₆ " |
| 8' | 1 | 2 | 28, 32, 54 | 4 ⁷ / ₁₆ " | 96" | 1 ¹³ / ₁₆ " |
| | 1 | 1 | 54, 96T8 | 4 ⁷ / ₁₆ " | 96" | 1 ¹³ / ₁₆ " |
| | 2 | 4 | 28, 32, 54 | 4 ⁷ / ₁₆ " | 96" | 1 ¹³ / ₁₆ " |
| | 2 | 2 | 54, 96T8 | 4 ⁷ / ₁₆ " | 96" | 1 ¹³ / ₁₆ " |
| | 2 | 2 | 28, 32 | 4 ⁷ / ₁₆ " | 96" | 1 ¹³ / ₁₆ " |
| | 3 | 6 | 28, 32 | 4 ⁷ / ₁₆ " | 96" | 1 ¹³ / ₁₆ " |
| 16' | 1 | 4 | 28, 32, 54 | 4 ⁷ / ₁₆ " | 192" | 1 ¹³ / ₁₆ " |
| | 1 | 2 | 54, 96T8 | 4 ⁷ / ₁₆ " | 192" | 1 ¹³ / ₁₆ " |
| | 2 | 8 | 28, 32, 54 | 4 ⁷ / ₁₆ " | 192" | 1 ¹³ / ₁₆ " |
| | 2 | 4 | 54, 96T8 | 4 ⁷ / ₁₆ " | 192" | 1 ¹³ / ₁₆ " |

