

## Straight-Sided Utility Channel

### FEATURES

- Die formed steel housing with heat sink embossments for cooler running ballasts
- Ballast cover retained by ¼ turn fasteners
- Individual or row mounting, surface or suspended
- Channel ends double as joiners
- All metal parts are treated with a five stage phosphate bonding process and finished with baked white enamel
- UL listed 1598, cUL or CSA. Damp Location standard



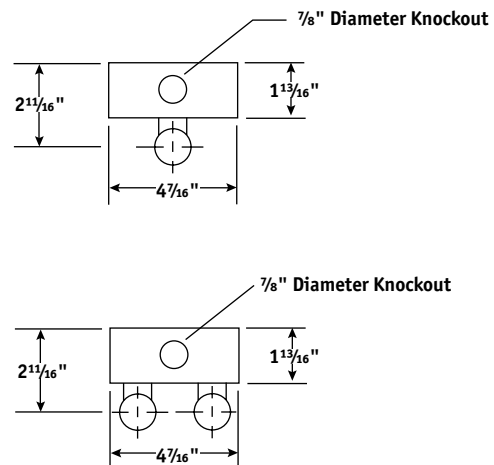
STRIPLIGHTS

### ORDERING INFORMATION

MODEL	SIZE	NO. OF LAMPS IN CROSS SECTION	LAMP TYPE	BALLAST	VOLTAGE	OPTIONS
<b>CS</b> Straight-Sided Utility Channel	2 2' 3 3' 4 4' 6 6' 8 8' 16 16' (Two housings)	1 One 2 Two 3 Three See Product Availability table below.	14 2', T5: 14 Watt 17 2', T8: 17 Watt 21 3', T5: 21 Watt 24 2', T5HO: 24 Watt 25 3', T8: 25 Watt 28 4', T5: 28 Watt 32 4', T8: 32, 30, 28 or 25 Watt 39 3', T5HO: 39 Watt 54 4', T5HO: 54 or 51 Watt 96 8', T12: 75 or 60 Watt 96T8 8', T8: 59 Watt	<b>NOTE:</b> See Technical Section for other ballast options. <b>E</b> Electronic T8, Instant Start <b>3E</b> 3-Lamp Electronic T8, Instant Start <b>4E</b> 4-Lamp Electronic T8, Instant Start <b>24E</b> (1) 2-Lamp and (1) 4-Lamp Electronic T8, Instant Start <b>EP</b> Electronic T5 or T8, Programmed Start <b>3EP</b> 3-Lamp Electronic T5 or T8, Programmed Start <b>4EP</b> 4-Lamp Electronic T5HO (N/A 347V) or T8, Programmed Start	<b>U</b> 120V-277V <b>347</b> 347V	<b>BC1</b> Branch Circuit Wiring, Single Circuit (For more branch circuit wiring options see page 113) <b>GLR</b> Fast Blow Fuse <b>EL</b> Emergency Battery Pack <b>PAF</b> Paint After Fabrication <b>NYC</b> NYC Compliant <b>NYCU</b> NYC Compliant, Union Label
<b>ACCESSORIES (ORDER SEPARATELY)</b>						
<b>CSWG3</b> 3' Wire Guard						
<b>CSWG4</b> 4' Wire Guard						
<b>CSR4</b> 4' Symmetric Reflector						
<b>CSRA4</b> 4' Asymmetric Reflector						
<b>CSRU4</b> 4' Symmetric Reflector 5% Uplight						
<b>S18</b> 18" Stem, 8° Swivel Stem and Canopy						
<b>SS18</b> 18", 45° Swivel Stem, and Canopy						
<b>CSHC</b> Chain Hanger Assembly						

### PRODUCT AVAILABILITY

SIZE	NO. OF LAMPS IN CROSS SECTION	NO. OF LAMPS IN FIXTURE	LAMP TYPE	WIDTH	LENGTH	HEIGHT
2'	1	1	14, 17, 24	4 <sup>7</sup> / <sub>16</sub> "	24"	1 <sup>13</sup> / <sub>16</sub> "
	2	2	14, 17, 24	4 <sup>7</sup> / <sub>16</sub> "	24"	1 <sup>13</sup> / <sub>16</sub> "
	3	3	17	4 <sup>7</sup> / <sub>16</sub> "	24"	1 <sup>13</sup> / <sub>16</sub> "
3'	1	1	21, 25, 39	4 <sup>7</sup> / <sub>16</sub> "	36"	1 <sup>13</sup> / <sub>16</sub> "
	2	2	21, 25, 39	4 <sup>7</sup> / <sub>16</sub> "	36"	1 <sup>13</sup> / <sub>16</sub> "
	3	3	25	4 <sup>7</sup> / <sub>16</sub> "	36"	1 <sup>13</sup> / <sub>16</sub> "
4'	1	1	28, 32, 54	4 <sup>7</sup> / <sub>16</sub> "	48"	1 <sup>13</sup> / <sub>16</sub> "
	2	2	28, 32, 54	4 <sup>7</sup> / <sub>16</sub> "	48"	1 <sup>13</sup> / <sub>16</sub> "
	3	3	28, 32, 54	4 <sup>7</sup> / <sub>16</sub> "	48"	1 <sup>13</sup> / <sub>16</sub> "
6'	1	1	21, 25, 39	4 <sup>7</sup> / <sub>16</sub> "	72"	1 <sup>13</sup> / <sub>16</sub> "
	2	2	21, 25, 39	4 <sup>7</sup> / <sub>16</sub> "	72"	1 <sup>13</sup> / <sub>16</sub> "
	3	6	21, 25, 39	4 <sup>7</sup> / <sub>16</sub> "	72"	1 <sup>13</sup> / <sub>16</sub> "
8'	1	2	28, 32, 54	4 <sup>7</sup> / <sub>16</sub> "	96"	1 <sup>13</sup> / <sub>16</sub> "
	1	1	54, 96T8	4 <sup>7</sup> / <sub>16</sub> "	96"	1 <sup>13</sup> / <sub>16</sub> "
	2	4	28, 32, 54	4 <sup>7</sup> / <sub>16</sub> "	96"	1 <sup>13</sup> / <sub>16</sub> "
	2	2	54, 96T8	4 <sup>7</sup> / <sub>16</sub> "	96"	1 <sup>13</sup> / <sub>16</sub> "
	2	2	28, 32	4 <sup>7</sup> / <sub>16</sub> "	96"	1 <sup>13</sup> / <sub>16</sub> "
	3	6	28, 32	4 <sup>7</sup> / <sub>16</sub> "	96"	1 <sup>13</sup> / <sub>16</sub> "
16'	1	4	28, 32, 54	4 <sup>7</sup> / <sub>16</sub> "	192"	1 <sup>13</sup> / <sub>16</sub> "
	1	2	54, 96T8	4 <sup>7</sup> / <sub>16</sub> "	192"	1 <sup>13</sup> / <sub>16</sub> "
	2	8	28, 32, 54	4 <sup>7</sup> / <sub>16</sub> "	192"	1 <sup>13</sup> / <sub>16</sub> "
	2	4	54, 96T8	4 <sup>7</sup> / <sub>16</sub> "	192"	1 <sup>13</sup> / <sub>16</sub> "



## Straight-Sided Utility Channel

### FEATURES

- Die formed steel housing with heat sink embossments for cooler running ballasts
- Ballast cover retained by ¼ turn fasteners
- Individual or row mounting, surface or suspended
- Channel ends double as joiners
- All metal parts are treated with a five stage phosphate bonding process and finished with baked white enamel
- UL listed 1598, cUL or CSA. Damp Location standard



STRIPLIGHTS

### ORDERING INFORMATION

MODEL	SIZE	NO. OF LAMPS IN CROSS SECTION	LAMP TYPE	BALLAST	VOLTAGE	OPTIONS
<b>CS</b> Straight-Sided Utility Channel	2 2' 3 3' 4 4' 6 6' 8 8' 16 16' (Two housings)	1 One 2 Two 3 Three See Product Availability table below.	14 2', T5: 14 Watt 17 2', T8: 17 Watt 21 3', T5: 21 Watt 24 2', T5HO: 24 Watt 25 3', T8: 25 Watt 28 4', T5: 28 Watt 32 4', T8: 32, 30, 28 or 25 Watt 39 3', T5HO: 39 Watt 54 4', T5HO: 54 or 51 Watt 96 8', T12: 75 or 60 Watt 96T8 8', T8: 59 Watt	<b>NOTE:</b> See Technical Section for other ballast options. <b>E</b> Electronic T8, Instant Start <b>3E</b> 3-Lamp Electronic T8, Instant Start <b>4E</b> 4-Lamp Electronic T8, Instant Start <b>24E</b> (1) 2-Lamp and (1) 4-Lamp Electronic T8, Instant Start <b>EP</b> Electronic T5 or T8, Programmed Start <b>3EP</b> 3-Lamp Electronic T5 or T8, Programmed Start <b>4EP</b> 4-Lamp Electronic T5HO (N/A 347V) or T8, Programmed Start	<b>U</b> 120V-277V <b>347</b> 347V	<b>BC1</b> Branch Circuit Wiring, Single Circuit (For more branch circuit wiring options see page 113) <b>GLR</b> Fast Blow Fuse <b>EL</b> Emergency Battery Pack <b>PAF</b> Paint After Fabrication <b>NYC</b> NYC Compliant <b>NYCU</b> NYC Compliant, Union Label
<b>ACCESSORIES (ORDER SEPARATELY)</b>						
						<b>CSWG3</b> 3' Wire Guard <b>CSWG4</b> 4' Wire Guard <b>CSR4</b> 4' Symmetric Reflector <b>CSRA4</b> 4' Asymmetric Reflector <b>CSRU4</b> 4' Symmetric Reflector 5% Uplight <b>S18</b> 18" Stem, 8° Swivel Stem and Canopy <b>SS18</b> 18", 45° Swivel Stem, and Canopy <b>CSHC</b> Chain Hanger Assembly

### PRODUCT AVAILABILITY

SIZE	NO. OF LAMPS IN CROSS SECTION	NO. OF LAMPS IN FIXTURE	LAMP TYPE	WIDTH	LENGTH	HEIGHT
2'	1	1	14, 17, 24	4 <sup>7</sup> / <sub>16</sub> "	24"	1 <sup>13</sup> / <sub>16</sub> "
	2	2	14, 17, 24	4 <sup>7</sup> / <sub>16</sub> "	24"	1 <sup>13</sup> / <sub>16</sub> "
	3	3	17	4 <sup>7</sup> / <sub>16</sub> "	24"	1 <sup>13</sup> / <sub>16</sub> "
3'	1	1	21, 25, 39	4 <sup>7</sup> / <sub>16</sub> "	36"	1 <sup>13</sup> / <sub>16</sub> "
	2	2	21, 25, 39	4 <sup>7</sup> / <sub>16</sub> "	36"	1 <sup>13</sup> / <sub>16</sub> "
	3	3	25	4 <sup>7</sup> / <sub>16</sub> "	36"	1 <sup>13</sup> / <sub>16</sub> "
4'	1	1	28, 32, 54	4 <sup>7</sup> / <sub>16</sub> "	48"	1 <sup>13</sup> / <sub>16</sub> "
	2	2	28, 32, 54	4 <sup>7</sup> / <sub>16</sub> "	48"	1 <sup>13</sup> / <sub>16</sub> "
	3	3	28, 32, 54	4 <sup>7</sup> / <sub>16</sub> "	48"	1 <sup>13</sup> / <sub>16</sub> "
6'	1	1	21, 25, 39	4 <sup>7</sup> / <sub>16</sub> "	72"	1 <sup>13</sup> / <sub>16</sub> "
	2	2	21, 25, 39	4 <sup>7</sup> / <sub>16</sub> "	72"	1 <sup>13</sup> / <sub>16</sub> "
	3	6	21, 25, 39	4 <sup>7</sup> / <sub>16</sub> "	72"	1 <sup>13</sup> / <sub>16</sub> "
8'	1	2	28, 32, 54	4 <sup>7</sup> / <sub>16</sub> "	96"	1 <sup>13</sup> / <sub>16</sub> "
	1	1	54, 96T8	4 <sup>7</sup> / <sub>16</sub> "	96"	1 <sup>13</sup> / <sub>16</sub> "
	2	4	28, 32, 54	4 <sup>7</sup> / <sub>16</sub> "	96"	1 <sup>13</sup> / <sub>16</sub> "
	2	2	54, 96T8	4 <sup>7</sup> / <sub>16</sub> "	96"	1 <sup>13</sup> / <sub>16</sub> "
	2	2	28, 32	4 <sup>7</sup> / <sub>16</sub> "	96"	1 <sup>13</sup> / <sub>16</sub> "
	3	6	28, 32	4 <sup>7</sup> / <sub>16</sub> "	96"	1 <sup>13</sup> / <sub>16</sub> "
16'	1	4	28, 32, 54	4 <sup>7</sup> / <sub>16</sub> "	192"	1 <sup>13</sup> / <sub>16</sub> "
	1	2	54, 96T8	4 <sup>7</sup> / <sub>16</sub> "	192"	1 <sup>13</sup> / <sub>16</sub> "
	2	8	28, 32, 54	4 <sup>7</sup> / <sub>16</sub> "	192"	1 <sup>13</sup> / <sub>16</sub> "
	2	4	54, 96T8	4 <sup>7</sup> / <sub>16</sub> "	192"	1 <sup>13</sup> / <sub>16</sub> "

