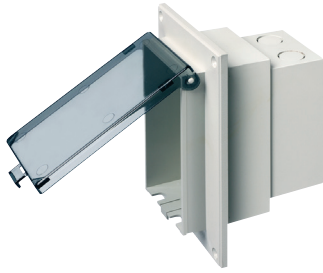


## Low Profile IN BOX™ for Flat Surface Retrofit Construction

IN BOX™



DBVR1C



DBHR1W

One-piece, 22.0 cu. inch recessed electrical box with weatherproof-in-use extra-duty cover for flat surfaces in existing construction. Non-metallic cover and base. Accepts most single gang wiring devices and uses standard indoor wall plates or a GFCI cover plate. Box and white cover are textured/ paintable. UV rated plastic for long outdoor life.

### FEATURES AND BENEFITS

- IN BOX's one-piece assembly replaces the installation of an electrical box and bubble cover assembly
- Installs in the wall, so less of it shows outside
- Use the retrofit IN BOX on plywood, T-111, and other flat surfaces
- Install option: Cover is removable for easier device installation
- No gaskets required

| CATALOG NUMBER | UPC/DCI/NAED MFG #018997 | ORIENTATION/COVER COLOR | UNIT PKG | STD PKG | DIM A | DIM B | DIM C | DIM D | DIM E |
|----------------|--------------------------|-------------------------|----------|---------|-------|-------|-------|-------|-------|
| DBVR1C         | 14313                    | Vertical/Clear          | 1        | 4       | 7.186 | 4.934 | 5.160 | 1.313 | 3.847 |
| DBVR1W         | 14314                    | Vertical/White          | 1        | 4       | 7.186 | 4.934 | 5.160 | 1.313 | 3.847 |
| DBHR1C         | 77604                    | Horizontal/Clear        | 1        | 4       | 4.934 | 7.186 | 5.160 | 1.313 | 3.847 |
| DBHR1W         | 77606                    | Horizontal/White        | 1        | 4       | 4.934 | 7.186 | 5.160 | 1.313 | 3.847 |

Add suffix "GC" to Catalog # when ordering in Canada, for example DBVR1CGC.  
Replacement covers available on page K-17.

2-Gang style available on page K-8.

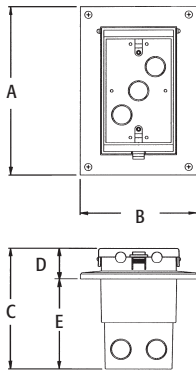
**PATENTED. ADDITIONAL PATENTS PENDING.**

Note: Meets 2015 CEC (Rule 26-702), NEMA 3R, NEC 406.9 (b); Where a weatherproof-in-use cover is required for 15 or 20 AMP receptacles installed outdoors.



E170558 LR49636

22 cu. in.



**WEATHERPROOF-IN-USE**  
**EXTRA-DUTY**



Bug Plugs ship installed in all IN BOX styles to seal unused cord hole openings.

### IN BOX for retrofit, flat surfaces includes...

Box with weatherproof-in-use extra-duty cover; installed bug plugs; (1) standard duplex and (1) standard GFCI face plate; (1) set installation screws; (1) NM cable connector; and (1) roll of caulk.

Scan For Video



### INSTALLATION INSTRUCTIONS



1 Cut a 3-1/4" x 5-1/2" hole in substrate. Pull wiring.



2 Apply the supplied caulk around back edges of flange. Install NM cable connector and wire, then press onto surface.



3 Attach IN BOX with stainless steel screws (provided).



4 Install wiring device per manufacturer's instructions, Local and National Electrical Codes.



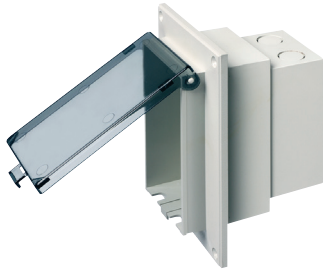
Accepts most single gang wiring devices, and uses a standard indoor wall plate. DBVR1C shown.



DBVR1W shown. IN BOX Saves Time. Looks Great!

## Low Profile IN BOX™ for Flat Surface Retrofit Construction

IN BOX™



DBVR1C



DBHR1W

One-piece, 22.0 cu. inch recessed electrical box with weatherproof-in-use extra-duty cover for flat surfaces in existing construction. Non-metallic cover and base. Accepts most single gang wiring devices and uses standard indoor wall plates or a GFCI cover plate. Box and white cover are textured/ paintable. UV rated plastic for long outdoor life.

### FEATURES AND BENEFITS

- IN BOX's one-piece assembly replaces the installation of an electrical box and bubble cover assembly
- Installs in the wall, so less of it shows outside
- Use the retrofit IN BOX on plywood, T-111, and other flat surfaces
- Install option: Cover is removable for easier device installation
- No gaskets required

| CATALOG NUMBER | UPC/DCI/NAED MFG #018997 | ORIENTATION/COVER COLOR | UNIT PKG | STD PKG | DIM A | DIM B | DIM C | DIM D | DIM E |
|----------------|--------------------------|-------------------------|----------|---------|-------|-------|-------|-------|-------|
| DBVR1C         | 14313                    | Vertical/Clear          | 1        | 4       | 7.186 | 4.934 | 5.160 | 1.313 | 3.847 |
| DBVR1W         | 14314                    | Vertical/White          | 1        | 4       | 7.186 | 4.934 | 5.160 | 1.313 | 3.847 |
| DBHR1C         | 77604                    | Horizontal/Clear        | 1        | 4       | 4.934 | 7.186 | 5.160 | 1.313 | 3.847 |
| DBHR1W         | 77606                    | Horizontal/White        | 1        | 4       | 4.934 | 7.186 | 5.160 | 1.313 | 3.847 |

Add suffix "GC" to Catalog # when ordering in Canada, for example DBVR1CGC.

Replacement covers available on page K-17.

2-Gang style available on page K-8.

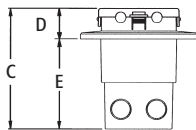
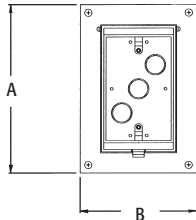
**PATENTED. ADDITIONAL PATENTS PENDING.**

Note: Meets 2015 CEC (Rule 26-702), NEMA 3R, NEC 406.9 (b); Where a weatherproof-in-use cover is required for 15 or 20 AMP receptacles installed outdoors.

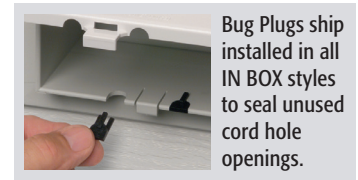


E170558 LR49636

22 cu. in.



**WEATHERPROOF-IN-USE**  
**EXTRA-DUTY**



Bug Plugs ship installed in all IN BOX styles to seal unused cord hole openings.

### IN BOX for retrofit, flat surfaces includes...

Box with weatherproof-in-use extra-duty cover; installed bug plugs; (1) standard duplex and (1) standard GFCI face plate; (1) set installation screws; (1) NM cable connector; and (1) roll of caulk.

Scan For Video



### INSTALLATION INSTRUCTIONS



1 Cut a 3-1/4" x 5-1/2" hole in substrate. Pull wiring.



2 Apply the supplied caulk around back edges of flange. Install NM cable connector and wire, then press onto surface.



3 Attach IN BOX with stainless steel screws (provided).



4 Install wiring device per manufacturer's instructions, Local and National Electrical Codes.



Accepts most single gang wiring devices, and uses a standard indoor wall plate. DBVR1C shown.



DBVR1W shown. IN BOX Saves Time. Looks Great!