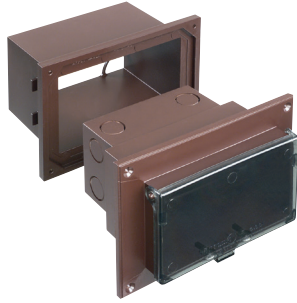
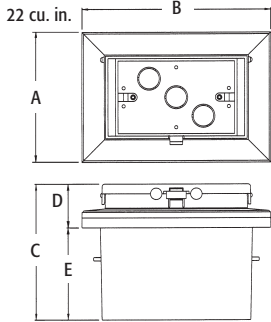


## Low Profile IN BOX™ with Adapter Sleeve for New Brick



DHB1BRC



22.0 cu. inch recessed electrical box with weatherproof-in-use extra-duty cover for new brick construction. Includes a protective adapter sleeve that keeps mortar out. Non-metallic cover and base. Accepts most single gang wiring devices and uses standard indoor wall plates or a GFCI cover plate. White box and cover are textured/paintable. UV rated plastic for long outdoor life.

### FEATURES AND BENEFITS

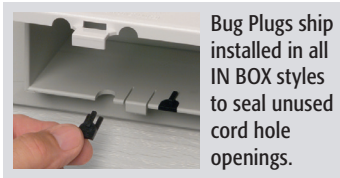
- IN BOX's one-piece assembly replaces the installation of an electrical box and bubble cover assembly
- Adapter sleeve, with loops in back for tying off cable, keeps mortar out of the box while brick mason works
- The clean IN BOX slips into the sleeve for easy installation
- Built-in anchor tabs seat IN BOX sleeve into mortar for a super secure installation
- Installs in the wall, so less of it shows outside
- Install option: Cover is removable for easier device installation
- No gaskets required

CATALOG NUMBER	UPC/DCI/NAED MFG #018997	DESCRIPTION/COVER COLOR	UNIT PKG	STD PKG	DIM A	DIM B	DIM C	DIM D	DIM E
DHB1C	54880	Horiz./Clear Cover/White Box	1	4	4.934	7.186	5.283	1.658	3.625
DHB1W	54882	Horiz./White Cover/White Box	1	4	4.934	7.186	5.283	1.658	3.625
DHB1BRC	54881	Horiz./Clear Cover/Brown Box	1	4	4.934	7.186	5.283	1.658	3.625
DHB1BR	54875	Horiz./Brown Cover/Brown Box	1	4	4.934	7.186	5.283	1.658	3.625
DVB1C	43609	Vertical/Clear Cover/White Box	1	4	7.186	4.934	5.283	1.658	3.625
DVB1W	43620	Vertical/White Cover/White Box	1	4	7.186	4.934	5.283	1.658	3.625
DVB1BRC	43608	Vertical/Clear Cover/Brown Box	1	4	7.186	4.934	5.283	1.658	3.625
DVB1BR	43595	Vertical/Brown Cover/Brown Box	1	4	7.186	4.934	5.283	1.658	3.625

Add suffix "GC" to Catalog # when ordering in Canada, for example DHB1CGC. Replacement covers available on page K-17.

**PATENTED. ADDITIONAL PATENTS PENDING.**

Note: Meets 2015 CEC (Rule 26-702), NEMA 3R, NEC 406.9 (b); Where a weatherproof-in-use cover is required for 15 or 20 AMP receptacles installed outdoors.



Bug Plugs ship installed in all IN BOX styles to seal unused cord hole openings.

### IN BOX for new brick includes...

Box with weatherproof-in-use extra-duty cover, adapter sleeve, installed bug plugs, (1) standard duplex and (1) standard GFCI face plate, installation screws, (1) NM cable connector, and (1) roll of caulk, disposable mud cover.

Scan For Video



### INSTALLATION INSTRUCTIONS



Mortar in adapter sleeve. Pull wire and tie off to loop in adapter sleeve.



When ready to complete...apply supplied caulk as shown and press around edges of adapter sleeve.



Install the supplied NM cable connector and wire. Insert the clean IN BOX into the sleeve.



Attach IN BOX with screws provided. Install wiring device per manufacturer's instructions, Local and National Electrical Codes.



Accepts most single gang wiring devices, and uses a standard indoor wall plate. DHB1C shown.



Weatherproof-in-use. DHB1BRC shown. IN BOX Saves Time. Looks Great!