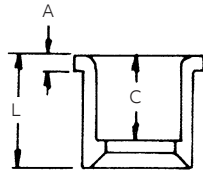


Conduit bodies and fittings

For use with Schedule 40 and 80 conduit



For connecting different sizes of conduit. Bell x Spigot.



UL LISTED
E23018
Except where noted by ►

Reducer bushings

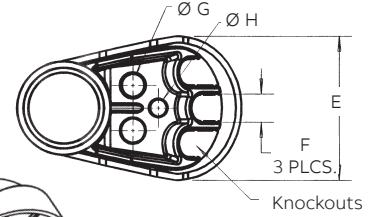
| Cat. No. | Size (in.) | Std. Ctn. | L (in.) Typical | A (in.) Typical | C (in.) Typical |
|------------|---------------|-----------|---------------------------------|--------------------------------|---------------------------------|
| E950ED | 3/4 x 1/2 | 100 | 1 ⁵ / ₃₂ | 1 ³ / ₆₄ | 1 ¹ / ₃₂ |
| E950FD-CAR | 1 x 1/2 | 25 | 1 ¹¹ / ₃₂ | 3/16 | 5 ⁷ / ₆₄ |
| E950FE | 1 x 3/4 | 100 | 1 ¹¹ / ₃₂ | 3/16 | 1 ¹ / ₆₄ |
| E950GE-CAR | 1 1/4 x 3/4 | 10 | 1 ¹⁵ / ₃₂ | 3/16 | 1 ¹ / ₆₄ |
| E950GF | 1 1/4 x 1 | 50 | 1 ¹⁵ / ₃₂ | 3/16 | 1 ⁹ / ₆₄ |
| E950HF-CAR | 1 1/2 x 1 | 10 | 1 ¹⁹ / ₃₂ | 3/16 | 1 ⁹ / ₆₄ |
| E950HG-CAR | 1 1/2 x 1 1/4 | 10 | 1 ¹⁹ / ₃₂ | 3/16 | 1 ¹⁷ / ₆₄ |
| E950JG-CAR | 2 x 1 1/4 | 10 | 1 3/4 | 7/32 | 1 ¹⁷ / ₆₄ |
| E950JH-CAR | 2 x 1 1/2 | 10 | 1 3/4 | 7/32 | 1 ²⁵ / ₆₄ |
| E950KJ-CAR | 2 1/2 x 2 | 10 | 2 ⁵ / ₃₂ | 3/8 | 1 ²⁷ / ₆₄ |
| E950LJ-CAR | 3 x 2 | 10 | 2 1/8 | 1/4 | 1 7/8 |
| ► E950LK | 3 x 2 1/2 | 25 | 1 ¹⁵ / ₁₆ | 1/4 | 1 ¹¹ / ₁₆ |
| E950NL | 4 x 3 | 25 | 2 3/4 | 5/16 | 1 ¹⁵ / ₁₆ |



UL LISTED
E23018
Except where noted by ►

Fabricated reducers

| Cat. No. | Size (in.) | Std. Ctn. | Std. Wt. (lbs.) |
|----------------------|------------|-----------|-----------------|
| Male x male | | | |
| ► E952JH | 1 1/2 x 2 | 48 | 20 |
| ► E952KJ | 2 1/2 x 2 | 48 | 26 |
| ► E952LJ | 3 x 2 | 36 | 21 |
| ► E952LK | 3 x 2 1/2 | 36 | 32 |
| ► E952NL | 4 x 3 | 15 | 21 |
| ► E952NM | 4 x 3 1/2 | 15 | 25 |
| ► E952PN | 5 x 4 | 12 | 27 |
| ► E952RP | 6 x 5 | 10 | 31 |
| Male x female | | | |
| ► E952NJF | 4 x 2 | 15 | 16 |
| ► E952RNF | 6 x 4 | 10 | 28 |



UL LISTED
E13938

Service entrance caps (Vertical applications only)

| Cat. No. | Size (in.) | Std. Ctn. | Dimensions (in.) | | | |
|-----------|------------|-----------|------------------|------|------|------|
| | | | E | F | G | H |
| E998D | 1/2 | 5 | 1.76 | .45 | .45 | - |
| E998E | 3/4 | 20 | 1.76 | .45 | .45 | - |
| E998E-CAR | 3/4 | 5 | 1.76 | .45 | .45 | - |
| E998F | 1 | 15 | 2.26 | .59 | .58 | - |
| E998F-CAR | 1 | 5 | 2.26 | .59 | .58 | - |
| E998G-CAR | 1 1/4 | 5 | 3.52 | .74 | .71 | .50 |
| E998H-CAR | 1 1/2 | 5 | 3.52 | .74 | .71 | .50 |
| E998J-CAR | 2 | 5 | 4.26 | .83 | .78 | .56 |
| E998K-UPC | 2 1/2 | 2 | 7.47 | 1.70 | 1.31 | 1.00 |
| E998L | 3 | 2 | 7.47 | 1.70 | 1.31 | 1.00 |
| E998N | 4 | 2 | 10.45 | 2.25 | 1.88 | 1.31 |

End caps

| Cat. No. | Size (in.) | Std. Ctn. | Std. Wt. (lbs.) |
|----------|------------|-----------|-----------------|
| ► E958D | 1/2 | 100 | 3 |
| ► E958E | 3/4 | 100 | 4 |
| ► E958F | 1 | 75 | 5 |
| ► E958G | 1 1/4 | 40 | 4 |
| ► E958H | 1 1/2 | 30 | 4 |
| ► E958J | 2 | 25 | 5 |
| ► E958K | 2 1/2 | 10 | 4 |
| ► E958L | 3 | 10 | 5 |
| ► E958N | 4 | 5 | 17 |
| ► E958P | 5 | 5 | 11 |
| ► E958R | 6 | 5 | 13 |

UL LISTED
E23018
Except where noted by ►

PVC riser caps

| Cat. No. | Size (in.) | Std. Ctn. | Std. Wt. (lbs.) |
|----------|------------|-----------|-----------------|
| ► E935J | 2 | 25 | 3 |
| ► E935L | 3 | 25 | 5 |
| ► E935N | 4 | 25 | 7 |
| ► E935P | 5 | 25 | 35 |
| ► E935R | 6 | 10 | 7 |

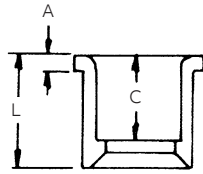


Conduit bodies and fittings

For use with Schedule 40 and 80 conduit



For connecting different sizes of conduit. Bell x Spigot.



UL LISTED
E23018
Except where noted by ▶

Reducer bushings

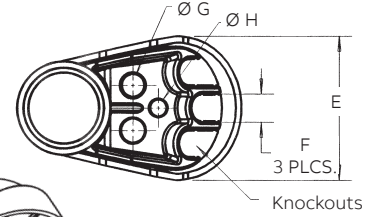
| Cat. No. | Size (in.) | Std. Ctn. | L (in.) Typical | A (in.) Typical | C (in.) Typical |
|------------|---|-----------|---------------------------------|--------------------------------|---------------------------------|
| E950ED | 3/4 x 1/2 | 100 | 1 ⁵ / ₃₂ | 1 ³ / ₆₄ | 1 ¹ / ₃₂ |
| E950FD-CAR | 1 x 1/2 | 25 | 1 ¹¹ / ₃₂ | 3/16 | 57/64 |
| E950FE | 1 x 3/4 | 100 | 1 ¹¹ / ₃₂ | 3/16 | 1 ¹ / ₆₄ |
| E950GE-CAR | 1 ¹ / ₄ x 3/4 | 10 | 1 ¹⁵ / ₃₂ | 3/16 | 1 ¹ / ₆₄ |
| E950GF | 1 ¹ / ₄ x 1 | 50 | 1 ¹⁵ / ₃₂ | 3/16 | 1 ⁹ / ₆₄ |
| E950HF-CAR | 1 ¹ / ₂ x 1 | 10 | 1 ¹⁹ / ₃₂ | 3/16 | 1 ⁹ / ₆₄ |
| E950HG-CAR | 1 ¹ / ₂ x 1 ¹ / ₄ | 10 | 1 ¹⁹ / ₃₂ | 3/16 | 1 ¹⁷ / ₆₄ |
| E950JG-CAR | 2 x 1 ¹ / ₄ | 10 | 1 ³ / ₄ | 7/32 | 1 ¹⁷ / ₆₄ |
| E950JH-CAR | 2 x 1 ¹ / ₂ | 10 | 1 ³ / ₄ | 7/32 | 1 ²⁵ / ₆₄ |
| E950KJ-CAR | 2 ¹ / ₂ x 2 | 10 | 2 ⁵ / ₃₂ | 3/8 | 1 ²⁷ / ₆₄ |
| E950LJ-CAR | 3 x 2 | 10 | 2 ¹ / ₈ | 1/4 | 1 ⁷ / ₈ |
| ▶ E950LK | 3 x 2 ¹ / ₂ | 25 | 1 ¹⁵ / ₁₆ | 1/4 | 1 ¹¹ / ₁₆ |
| E950NL | 4 x 3 | 25 | 2 ³ / ₄ | 5/16 | 1 ¹⁵ / ₁₆ |



UL LISTED
E23018
Except where noted by ▶

Fabricated reducers

| Cat. No. | Size (in.) | Std. Ctn. | Std. Wt. (lbs.) |
|----------------------|-----------------------------------|-----------|-----------------|
| Male x male | | | |
| ▶ E952JH | 1 ¹ / ₂ x 2 | 48 | 20 |
| ▶ E952KJ | 2 ¹ / ₂ x 2 | 48 | 26 |
| ▶ E952LJ | 3 x 2 | 36 | 21 |
| ▶ E952LK | 3 x 2 ¹ / ₂ | 36 | 32 |
| ▶ E952NL | 4 x 3 | 15 | 21 |
| ▶ E952NM | 4 x 3 ¹ / ₂ | 15 | 25 |
| ▶ E952PN | 5 x 4 | 12 | 27 |
| ▶ E952RP | 6 x 5 | 10 | 31 |
| Male x female | | | |
| ▶ E952NJF | 4 x 2 | 15 | 16 |
| ▶ E952RNF | 6 x 4 | 10 | 28 |



UL LISTED
E13938

Service entrance caps (Vertical applications only)

| Cat. No. | Size (in.) | Std. Ctn. | Dimensions (in.) | | | |
|-----------|-------------------------------|-----------|------------------|------|------|------|
| | | | E | F | G | H |
| E998D | 1/2 | 5 | 1.76 | .45 | .45 | - |
| E998E | 3/4 | 20 | 1.76 | .45 | .45 | - |
| E998E-CAR | 3/4 | 5 | 1.76 | .45 | .45 | - |
| E998F | 1 | 15 | 2.26 | .59 | .58 | - |
| E998F-CAR | 1 | 5 | 2.26 | .59 | .58 | - |
| E998G-CAR | 1 ¹ / ₄ | 5 | 3.52 | .74 | .71 | .50 |
| E998H-CAR | 1 ¹ / ₂ | 5 | 3.52 | .74 | .71 | .50 |
| E998J-CAR | 2 | 5 | 4.26 | .83 | .78 | .56 |
| E998K-UPC | 2 ¹ / ₂ | 2 | 7.47 | 1.70 | 1.31 | 1.00 |
| E998L | 3 | 2 | 7.47 | 1.70 | 1.31 | 1.00 |
| E998N | 4 | 2 | 10.45 | 2.25 | 1.88 | 1.31 |

End caps

| Cat. No. | Size (in.) | Std. Ctn. | Std. Wt. (lbs.) |
|----------|-------------------------------|-----------|-----------------|
| ▶ E958D | 1/2 | 100 | 3 |
| ▶ E958E | 3/4 | 100 | 4 |
| ▶ E958F | 1 | 75 | 5 |
| ▶ E958G | 1 ¹ / ₄ | 40 | 4 |
| ▶ E958H | 1 ¹ / ₂ | 30 | 4 |
| ▶ E958J | 2 | 25 | 5 |
| ▶ E958K | 2 ¹ / ₂ | 10 | 4 |
| ▶ E958L | 3 | 10 | 5 |
| ▶ E958N | 4 | 5 | 17 |
| ▶ E958P | 5 | 5 | 11 |
| ▶ E958R | 6 | 5 | 13 |

UL LISTED
E23018
Except where noted by ▶

PVC riser caps

| Cat. No. | Size (in.) | Std. Ctn. | Std. Wt. (lbs.) |
|----------|------------|-----------|-----------------|
| ▶ E935J | 2 | 25 | 3 |
| ▶ E935L | 3 | 25 | 5 |
| ▶ E935N | 4 | 25 | 7 |
| ▶ E935P | 5 | 25 | 35 |
| ▶ E935R | 6 | 10 | 7 |

