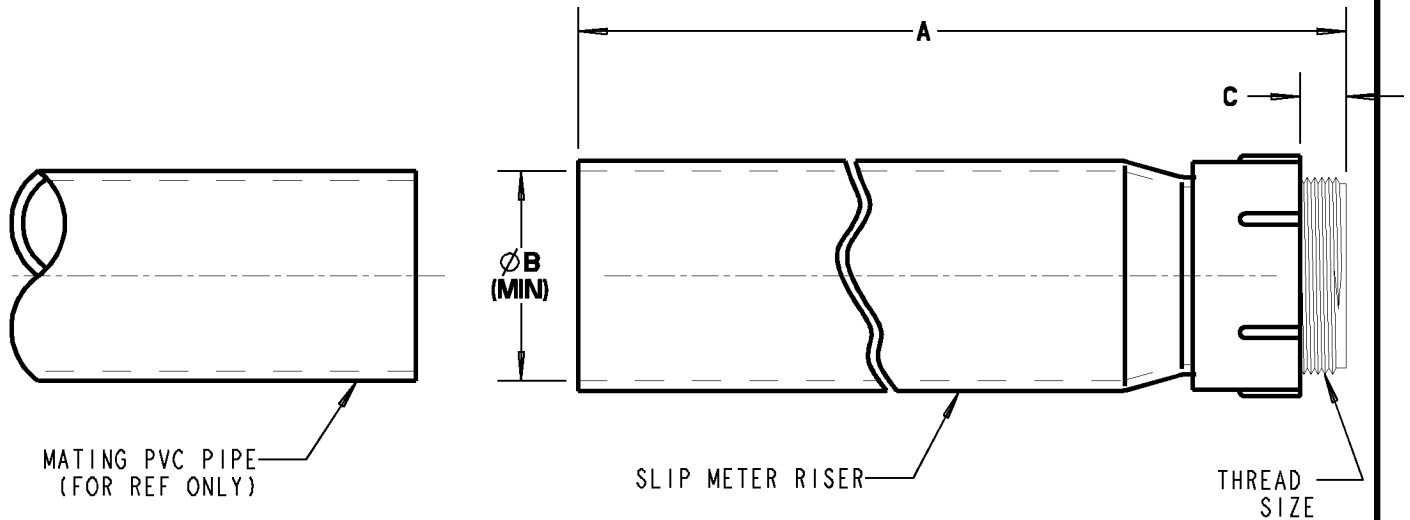


# Carlton®

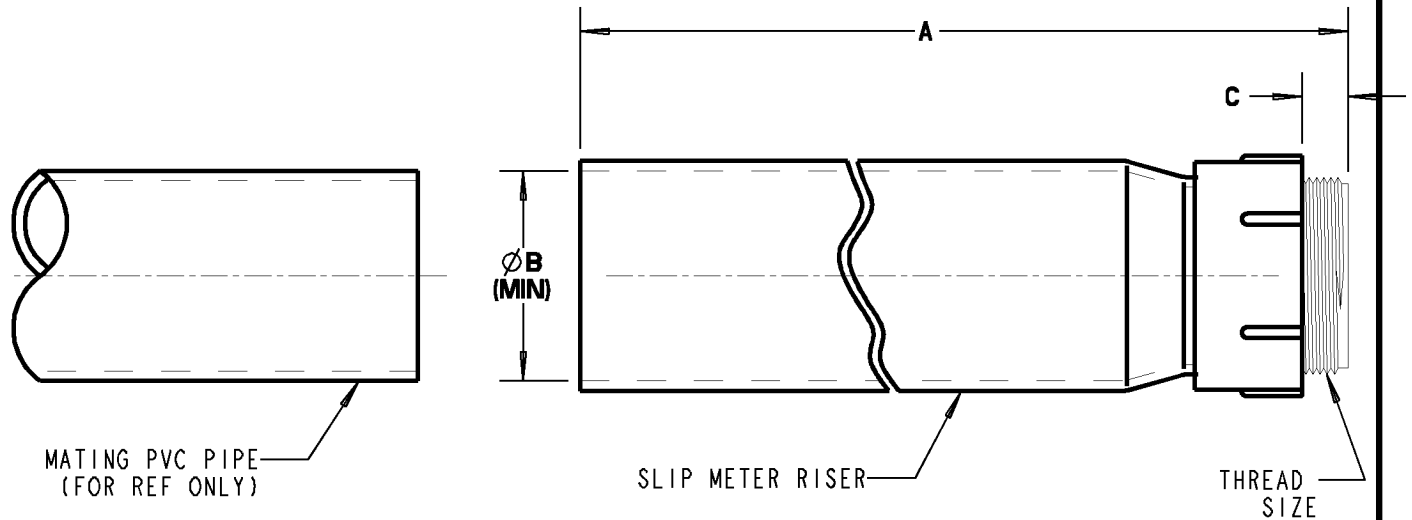


| PART NO. | SIZE   | A (LENGTH)    | B (MINIMUM)       | C              | THREAD SIZE | MATING PVC PIPE SIZE & TYPE                |
|----------|--------|---------------|-------------------|----------------|-------------|--|
| E954JXX  | 2"     | 24.0<br>[610] | 2.492<br>[63.30]  | .83<br>[20.95] | 2" NPT      | 2" SCH 40 CONDUIT<br>(REF O.D. Ø2.375)     |
| E954JXS  | 2"     | 24.0<br>[610] | 2.492<br>[63.30]  | .83<br>[20.95] | 2" NPT      | 2" SCH 40 CONDUIT<br>(REF O.D. Ø2.375)     |
| E954KXX  | 2-1/2" | 24.0<br>[610] | 2.961<br>[75.21]  | .81<br>[20.6]  | 2-1/2" NPSC | 2 1/2" SCH 40 CONDUIT<br>(REF O.D. Ø2.875) |
| E954LXX  | 3"     | 24.0<br>[610] | 3.616<br>[91.85]  | .80<br>[20.24] | 3" NPSC     | 3" SCH 40 CONDUIT<br>(REF O.D. Ø3.500)     |
| E954LXS  | 3"     | 24.0<br>[610] | 3.616<br>[91.85]  | .80<br>[20.24] | 3" NPSC     | 3" SCH 40 CONDUIT<br>(REF O.D. Ø3.500)     |
| E954NXX  | 4"     | 24.0<br>[610] | 4.859<br>[123.42] | .77<br>[19.6]  | 4" NPSC     | 4" SCH 40 CONDUIT<br>(REF O.D. Ø4.500)     |

NOTES:  
1. P/N'S E954JXS & E954LXS ARE SPLIT AT CENTERLINE.


|   |  |   |           |          |              |
|---|--|---|-----------|----------|--------------|
| <b>GENERAL NOTES</b>  |  | <b>Thomas &amp; Betts</b><br><small>www.tnb.com</small> |           |          |              |
| 1. ALL DIMENSIONS ARE FOR REFERENCE ONLY.<br>2. DIMENSIONS IN BRACKETS [ ] ARE IN METRIC UNITS. |  |   |           |          |              |
| <b>REVISIONS</b>  |  | <b>DESCRIPTION: SLIP METER RISER, CONDUIT</b>           |           |          |              |
| ** SEE ERN (****) FOR APPROVAL SIGNATURES & RELEASE DATE.<br>PROJECT NO: ****                   |  | ORIGINAL PROJECT NO / ( ERN NO )                        | SHEET NO: | REV. NO: | DRAWING NO:  |
|   |  | / ( )   | 1 OF 1    | D        | WSD- AC03046 |

# Carlton®



| PART NO. | SIZE   | A (LENGTH)    | B (MINIMUM)       | C              | THREAD SIZE | MATING PVC PIPE SIZE & TYPE                |
|----------|--------|---------------|-------------------|----------------|-------------|--|
| E954JXX  | 2"     | 24.0<br>[610] | 2.492<br>[63.30]  | .83<br>[20.95] | 2" NPT      | 2" SCH 40 CONDUIT<br>(REF O.D. Ø2.375)     |
| E954JXS  | 2"     | 24.0<br>[610] | 2.492<br>[63.30]  | .83<br>[20.95] | 2" NPT      | 2" SCH 40 CONDUIT<br>(REF O.D. Ø2.375)     |
| E954KXX  | 2-1/2" | 24.0<br>[610] | 2.961<br>[75.21]  | .81<br>[20.6]  | 2-1/2" NPSC | 2 1/2" SCH 40 CONDUIT<br>(REF O.D. Ø2.875) |
| E954LXX  | 3"     | 24.0<br>[610] | 3.616<br>[91.85]  | .80<br>[20.24] | 3" NPSC     | 3" SCH 40 CONDUIT<br>(REF O.D. Ø3.500)     |
| E954LXS  | 3"     | 24.0<br>[610] | 3.616<br>[91.85]  | .80<br>[20.24] | 3" NPSC     | 3" SCH 40 CONDUIT<br>(REF O.D. Ø3.500)     |
| E954NXX  | 4"     | 24.0<br>[610] | 4.859<br>[123.42] | .77<br>[19.6]  | 4" NPSC     | 4" SCH 40 CONDUIT<br>(REF O.D. Ø4.500)     |

NOTES:  
1. P/N'S E954JXS & E954LXS ARE SPLIT AT CENTERLINE.

|   |  |  |           |          |              |
|---|--|--|-----------|----------|--------------|
| <b>GENERAL NOTES</b>  |  | <br>www.tnb.com |           |          |              |
| 1. ALL DIMENSIONS ARE FOR REFERENCE ONLY.<br>2. DIMENSIONS IN BRACKETS [ ] ARE IN METRIC UNITS. |  |  |           |          |              |
| <b>REVISIONS</b>  |  | <b>DESCRIPTION: SLIP METER RISER, CONDUIT</b>  |           |          |              |
| ** SEE ERN (****) FOR APPROVAL SIGNATURES & RELEASE DATE.<br>PROJECT NO: ****                   |  | ORIGINAL PROJECT NO / ( ERN NO )   | SHEET NO: | REV. NO: | DRAWING NO:  |
|   |  | / ( )  | 1 OF 1    | D        | WSD- AC03046 |