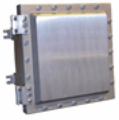




ELLIOTT ELECTRIC SUPPLY

We Deliver...Lower Cost, Quality Products, & Personal Service

2310 N. Stallings Dr.
75964-0000, TX Nacogdoches
Phone: 936-569-7941
Fax: 936-560-4685



ECP242408 24X24X8 Al Ecp Haz Loc Encl

Crouse-Hinds

Catalog Number	ECP242408
Manufacturer	Crouse-Hinds
Description	Eaton Crouse-Hinds Series Ecp Enclosure, Square Cover, 9-7/16" Depth, 24" X 24" X 8", Copper-Free Aluminum, Tap-In Mounting Feet
Weight per unit	279.0 (lbs/each)
Product Category	Nema Types 3 & 3R Metallic Enc

Features

dimensions	29.3300 IN X 12.5300 IN X 29.3300 IN
Material	Copper-Free Aluminum

Material, Color, and Finish

Color	Alumunim - natural
-------	--------------------

Dimensions and Weight

Size	24x24x08
------	----------

Descriptions

Construction	Cast Aluminum
Description	24X24X8 AL ECP HAZ LOC ENCL
extra long description	CRS-H ECP242408 NEMA 7 EXPLOSIONPRO
Features	Featuring an optimized design and fast lead times for OEMs, Crouse-Hinds series ECP explosionproof enclosures are available in 40 standard sizes with optional conduit and device drilling and tapping. ECP enclosures are globally certified for use in worldwide applications. They are listed for Class I, Division 1 and Class II, Division 1 hazardous areas, and they also have IECEx and ATEX certifications.
Long Description	Eaton Crouse-Hinds series ECP enclosure, Square cover, 9-7/16" depth, 24" x 24" x 8", Copper-free aluminum, Tap-in mounting feet
Product Type	Nema 7 Explosionproof Enclosure

Manufacturer Information

Brand	Eaton
GTIN	00662276321984
Manufacturers Part Number	ECP242408
UPC	662276321984

Taxonomies, Classifications, and Categories

Category Description	Busway and Busway Accessories
Type	ENCLOSURE



ELLIOTT ELECTRIC SUPPLY

We Deliver...Lower Cost, Quality Products, & Personal Service

2310 N. Stallings Dr.
75964-0000, TX Nacogdoches
Phone: 936-569-7941
Fax: 936-560-4685

Packaging

Carton	1
Weight Per each	279

Uses, Certifications, and Standards

Application	Ind Facilities & Factories - Facility: Power Distribution and Control
Mounting	Tap in