

**NEW!**  
more on  
reverse

# Non-Metallic Insulating Bushings for EMT

*Cable Protection at its Best*



**Easy installation on EMT!**



**EMT400S**  
4" Split Insulating Bushing  
\*Cable tie included

Arlington's non-metallic Insulating Bushings protect cable from abrasion when using EMT, Rigid, IMC or PVC rigid conduit – holding firmly in place as cable is pulled through.

When used for cable protection only these insulating bushings are a perfect substitution for costly fittings. Uses include power, computer data lines, cable TV, audio/video cables, phone, or alarm/security systems.

**Try our new, convenient SPLIT bushings. They're perfect for easy installation on EMT, and other conduit when cables are already in place.**

**SPLIT bushings are available in 2", 2-1/2", 3", 3-1/2" and 4" trade sizes. Look for the 'S' suffix in the chart on reverse.**

Arlington Insulating Bushings...

- Listed for use in environmental air handling spaces per 2014 NEC requirements 300-22(c)
- Meet 2014 NEC requirements for 300-15(c) protection
- UL/CSA Listed



Scan for info

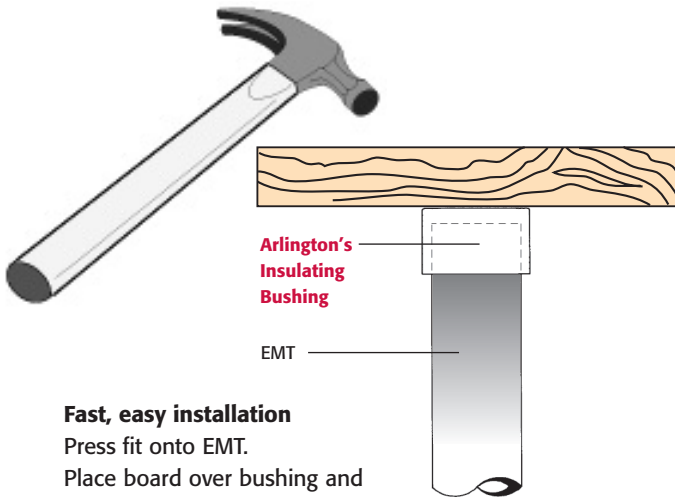


**Arlington**

1 Stauffer Industrial Park  
Scranton, PA 18517  
**800/233.4717**  
**Fax 570/562.0646**  
[www.aifittings.com](http://www.aifittings.com)

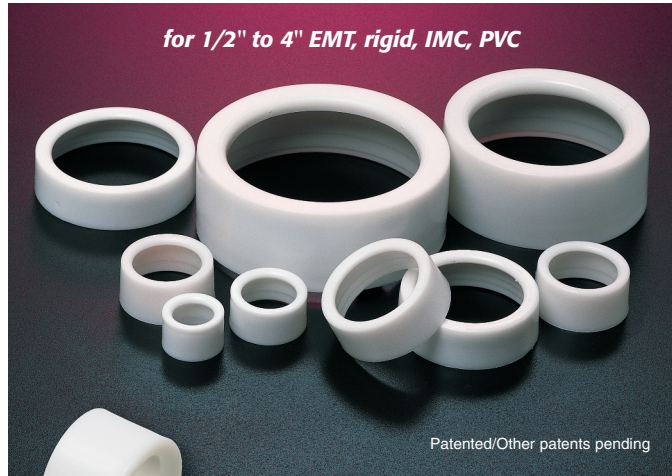
# Insulating Bushings for EMT, Rigid, IMC, PVC

Listed for Environmental Air Handling Spaces



**Fast, easy installation**  
 Press fit onto EMT.  
 Place board over bushing and tap onto conduit for extra-firm hold.

Arlington's Insulating Bushings meet 2014 NEC requirements for 300-15(c) protection



for 1/2" to 4" EMT, rigid, IMC, PVC

Patented/Other patents pending



**EMT50**  
 1/2" Insulating Bushing for EMT

CATALOG NUMBER	UPC/DCI/NAED MFG #01 8997	Trade Size	DESCRIPTION Insulating Bushings	UNIT PKG	STD PKG
EMT50	12200	1/2"	Press-fit Non-metallic Insulating Bushings for use with EMT	100	1000
EMT75	12205	3/4"		100	1000
EMT100	12220	1"		100	100
EMT125	12225	1-1/4"		100	100
EMT150	12230	1-1/2"		100	100
EMT200	12235	2"	50	50	
EMT200S	15301	2"	Insulating Bushing wv Split	50	50

These larger EMT Bushings can also be used with rigid, IMC, PVC conduit

EMT250	12240	2-1/2"	25	25	
EMT300	12245	3"	25	25	
EMT350	12250	3-1/2"	25	25	
EMT400	12255	4"	25	25	
EMT250S	12270	2-1/2"	Insulating Bushing wv Split	25	25
EMT300S	12271	3"	Insulating Bushing wv Split	25	25
EMT350S	12272	3-1/2"	Insulating Bushing wv Split	25	25
EMT400S	22001	4"	Insulating Bushing wv Split	25	25

SPLIT Insulating Bushings include cable tie



**Arlington**

1 Stauffer Industrial Park  
 Scranton, PA 18517  
 800/233.4717  
 Fax 570/562.0646  
 www.aifittings.com



Split Insulating Bushings

Scan for info



Distributed by

Patent pending  
 EMT400S/15M 0813 REV0314

**NEW!**  
more on  
reverse

# Non-Metallic Insulating Bushings for EMT

*Cable Protection at its Best*



**Easy installation on EMT!**



**EMT400S**  
4" Split Insulating Bushing  
\*Cable tie included

Arlington's non-metallic Insulating Bushings protect cable from abrasion when using EMT, Rigid, IMC or PVC rigid conduit – holding firmly in place as cable is pulled through.

When used for cable protection only these insulating bushings are a perfect substitution for costly fittings. Uses include power, computer data lines, cable TV, audio/video cables, phone, or alarm/security systems.

**Try our new, convenient SPLIT bushings. They're perfect for easy installation on EMT, and other conduit when cables are already in place.**

**SPLIT bushings are available in 2", 2-1/2", 3", 3-1/2" and 4" trade sizes. Look for the 'S' suffix in the chart on reverse.**

Arlington Insulating Bushings...

- Listed for use in environmental air handling spaces per 2014 NEC requirements 300-22(c)
- Meet 2014 NEC requirements for 300-15(c) protection
- UL/CSA Listed



Scan for info

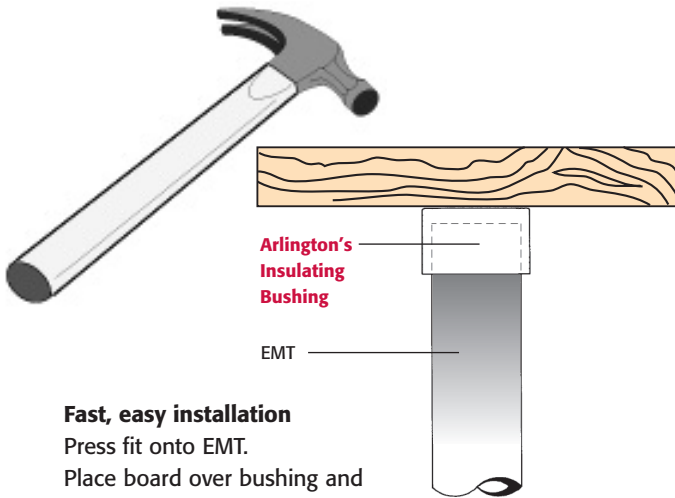


**Arlington**

1 Stauffer Industrial Park  
Scranton, PA 18517  
**800/233.4717**  
**Fax 570/562.0646**  
[www.aifittings.com](http://www.aifittings.com)

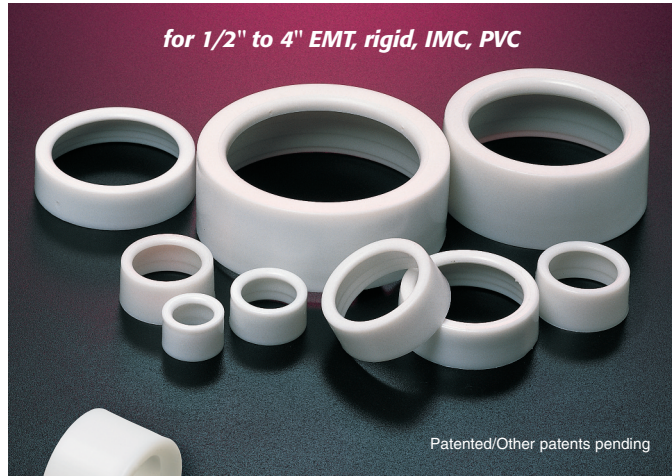
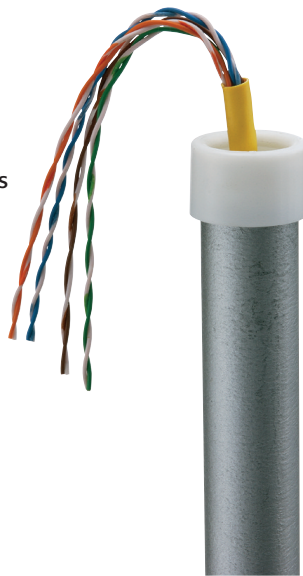
# Insulating Bushings for EMT, Rigid, IMC, PVC

Listed for Environmental Air Handling Spaces



**Fast, easy installation**  
 Press fit onto EMT.  
 Place board over bushing and tap onto conduit for extra-firm hold.

Arlington's Insulating Bushings meet 2014 NEC requirements for 300-15(c) protection



for 1/2" to 4" EMT, rigid, IMC, PVC

Patented/Other patents pending



**EMT50**  
 1/2" Insulating Bushing for EMT

CATALOG NUMBER	UPC/DCI/NAED MFG #01 8997	Trade Size	DESCRIPTION Insulating Bushings	UNIT PKG	STD PKG
EMT50	12200	1/2"	Press-fit Non-metallic Insulating Bushings for use with EMT	100	1000
EMT75	12205	3/4"		100	1000
EMT100	12220	1"		100	100
EMT125	12225	1-1/4"		100	100
EMT150	12230	1-1/2"		100	100
EMT200	12235	2"	50	50	
EMT200S	15301	2"	Insulating Bushing wv Split	50	50

These larger EMT Bushings can also be used with rigid, IMC, PVC conduit

EMT250	12240	2-1/2"	25	25	
EMT300	12245	3"	25	25	
EMT350	12250	3-1/2"	25	25	
EMT400	12255	4"	25	25	
EMT250S	12270	2-1/2"	Insulating Bushing wv Split	25	25
EMT300S	12271	3"	Insulating Bushing wv Split	25	25
EMT350S	12272	3-1/2"	Insulating Bushing wv Split	25	25
EMT400S	22001	4"	Insulating Bushing wv Split	25	25

SPLIT Insulating Bushings include cable tie



**Arlington**

1 Stauffer Industrial Park  
 Scranton, PA 18517  
 800/233.4717  
 Fax 570/562.0646  
 www.aifittings.com



**NEW**

Split Insulating Bushings

Scan for info



Distributed by

Patent pending  
 EMT400S/15M 0813 REV0314