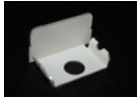




# ELLIOTT ELECTRIC SUPPLY

We Deliver...Lower Cost, Quality Products, & Personal Service

2310 N. Stallings Dr.  
75964-0000, TX Nacogdoches  
Phone: 936-569-7941  
Fax: 936-560-4685



## G2010B STL Blank End Fitting 2000 Gy

*Wiremold/Legrand*

Catalog Number	G2010B
Manufacturer	Wiremold/Legrand
Description	<P>Closes Off The Open End Of 2000 Series Raceway.</P>
Weight per unit	0.0237 (lbs/each)
Product Category	Metallic Raceway & Accessories

### Features

Enclosure Type	Steel
Voltage	125.0 V

### Descriptions

Description	STL BLANK END FITTING 2000 GY
extra long description	WM G2010B STL BLANK END FITTING 200
Long Description	<p>Closes off the open end of 2000 Series Raceway.</p>
Product Type	STL Blank End Fitting 2000 Gray
Special Features	Steel Raceway, Compact low profile design, Full range of fittings, one and two - gang device boxes.

### Manufacturer Information

Brand	WIREMOLD
GTIN	00786776189742
Manufacturers Part Number	G2010B
UPC	786776189742

### Taxonomies, Classifications, and Categories

Category Description	Wire/Plug Strips, Surf Raceways, Power Pole, Walkerduct, & Plugmolds
Type	Plugmold

### Trade Size

Amperage	15.0
----------	------

### Packaging

Carton	5
Weight Per each	0.0237

### Uses, Certifications, and Standards

standard	CULUS, ROHS, cULus Listed Base & Blank Cover: File E4376 Guide RJBT. Multioutlet Assemblies: File E15191 Guide PVGT. Fittings: File E41751 Guide RJPR. Base & Blank Cover & Plugmold Series w/Snapicoil Haarness: Meets Article 386 of NEC. Meets Section 12-3032 of CEC. cULus Listed Raceway: File E4376 Guide RJBT. Fittings: File E41751 Guide RJPR. Base & Black Cover: Meets Article 386 of NEC. Meets Section 12-600 of CEC.
----------	-------------------------------------------------------------------------------------------------------------------------------------------------------------------------------------------------------------------------------------------------------------------------------------------------------------------------------------------------------------------------------------------------------------------------------------