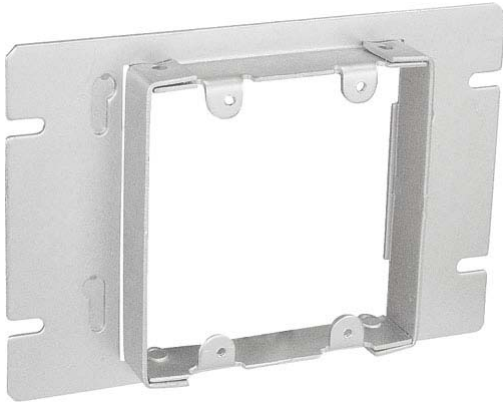


Stock #: GBDC-342

Product Description:



Two gang multi-gang box 3/4" raised device covers are used when multiple electrical or low voltage devices must be installed in finished wall applications. Garvin Industries' gang boxes accept all manufacturers' wallplates. Each cover fits corresponding box size and one box size smaller. Garvin Industries' gang box raised device covers allow the installer to mount multiple devices in one box location and attach finished wallplates flush with interior drywall plaster or tile surfaces.

Product Specifications:

Material : Steel
No. of Gangs : 2
Special : 2 Hour Fire Rating
Features :
Compliance : CUL,RoHS Compliant,UL

Contact Garvin Industries today:

Phone: 1-847-455-0188

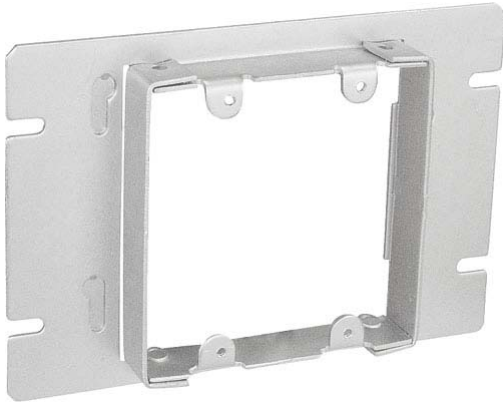
Fax: 1-847-455-0334

info@garvinindustries.com

www.garvinindustries.com

Stock #: GBDC-342

Product Description:



Two gang multi-gang box 3/4" raised device covers are used when multiple electrical or low voltage devices must be installed in finished wall applications. Garvin Industries' gang boxes accept all manufacturers' wallplates. Each cover fits corresponding box size and one box size smaller. Garvin Industries' gang box raised device covers allow the installer to mount multiple devices in one box location and attach finished wallplates flush with interior drywall plaster or tile surfaces.

Product Specifications:

Material : Steel
No. of Gangs : 2
Special : 2 Hour Fire Rating
Features :
Compliance : CUL,RoHS Compliant,UL

Contact Garvin Industries today:

Phone: 1-847-455-0188

Fax: 1-847-455-0334

info@garvinindustries.com

www.garvinindustries.com