

## DESCRIPTION

Designed for sloped ceiling installations for ceilings from 2/12 to 6/12 pitch. The socket aiming mechanism allows the lamp to be aimed straight down regardless of ceiling pitch. H47ICAT is sealed and gasketed to limit airflow between plenum and heated or air conditioned areas.

|             |      |
|-------------|------|
| Catalog #   | Type |
| Project     |      |
| Comments    |      |
| Prepared by | Date |

## SPECIFICATION FEATURES

### A...Baffle

One piece seamless baffle presents a clean finished appearance.

### B...Trim Ring

White Polycarbonate trim ring.

### C...Housing

Double wall housing construction. Door in outer housing allows junction box access from below ceiling.

### D...Junction Box

Junction box is listed for through branch circuit wiring and has seven 1/2" knockouts with true pry-out slots.

### E...GOT NAIL! Pass-N-Thru™ Bar Hangers

Bar Hanger Features include:

- Pre-installed nail easily installs in regular lumber, engineered lumber and laminated beams
- Safety and guidance system prevents snagging, ensures smooth straight nail penetration and allows bar hangers to be easily removed if necessary.
- Automatic levelling flange aligns the housing and lets you hold the housing in place with one hand while driving nails
- Housing can be positioned at any point within 24" joist span
- Score lines allow "toeless" shortening for 12" joists
- Bar hangers may be repositioned 90°
- Bar hangers do not need to be removed from frame for shortening

- Integral T-bar clips snaps onto T-bars - no additional clips required

### F...Socket

Exclusive socket aiming mechanism swivels and rotates to properly align lamp. Slope indicator provides quick and consistent lamp settings (factory set for 3/12 slope).

### G...Integral Thermal Protector

Integral thermal protector guards against improper lamping.

### Labels

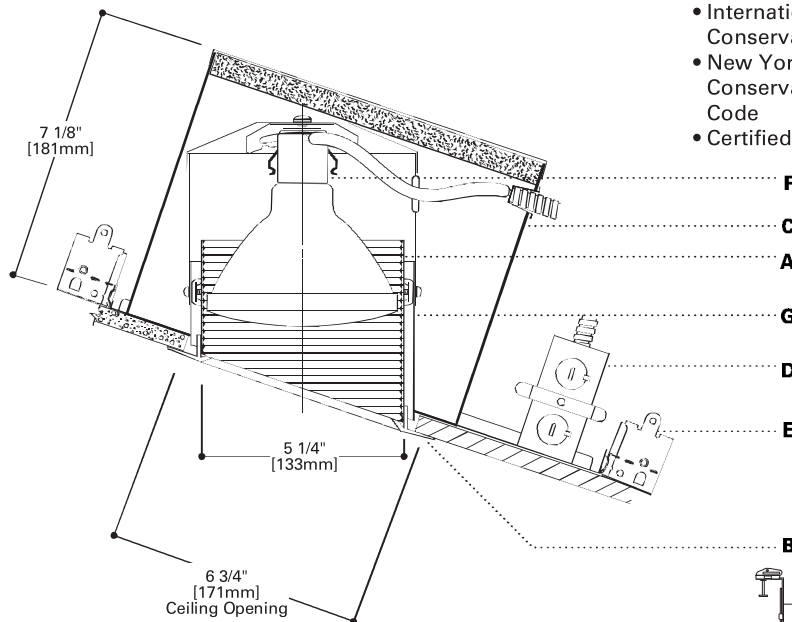
- UL Listed for Damp Location
  - UL listed for Feed Through
  - UL listed for Direct Contact with Insulation and combustible material
  - CSA Certified
- Meets following requirements:
- State of California Title 24
  - Washington State Energy Code
  - International Energy Conservation Code (IECC)
  - New York State Energy Conservation Construction Code
  - Certified Under ASTM-E283



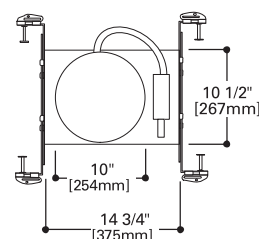
## H47ICAT

2 0 W 1 2 V M R 1 6  
 7 5 W R 3 0  
 7 5 W A 1 9  
 9 0 W P A R 3 8  
 1 0 0 W R 3 0

6" RECESSED  
 INCANDESCENT  
 DOWNLIGHT



B Top View



## TRIMS

## ORDERING INFORMATION

SAMPLE NUMBER: H47ICAT498P

Complete unit consists of housing and trim.

## Housing

H47ICAT=6" AIR-TITE IC  
Slope Ceiling Housing

## Trims

**BAFFLES**

**Coilex Baffle**  
**90W PAR38**  
 498P=Black  
 498W=White  
 OD: 7 7/8" (200mm)



**Coilex Baffle with Reflector**  
**75W A19**  
 496P=Black  
 496W=White  
 OD: 7 7/8" (200mm)

**ADJUSTABLES**

**Coilex Baffle Eyeball**  
**75W R30, 65W BR30**  
 417P=Black  
 417PB=Polished Brass  
 417W=White  
 OD: 8" (203mm)



**Eyeball-30° Tilt**  
**100W R30, 85W BR30**  
 78P=Satin White  
 78B=Brass  
 78PB=Polished Brass  
 78PAT=White Air-Tite  
 OD: 8" (203mm)



**Baffle Eyeball**  
**20W 12V MR16**  
 1417P=Black Baffle, White Eyeball, White Trim Ring  
 1417W=White Baffle, White Eyeball, White Trim Ring  
 OD: 8" (203mm)



**Lensed Shower Light**  
**60W A19**  
 170PS=Glass Lens, White Trim Ring wet location  
 Listed  
 OD: 8" (203mm)

Note: Specifications and Dimensions subject to change without notice.

Visit our web site at [www.cooperlighting.com](http://www.cooperlighting.com)

## DESCRIPTION

Designed for sloped ceiling installations for ceilings from 2/12 to 6/12 pitch. The socket aiming mechanism allows the lamp to be aimed straight down regardless of ceiling pitch. H47ICAT is sealed and gasketed to limit airflow between plenum and heated or air conditioned areas.

|             |      |
|-------------|------|
| Catalog #   | Type |
| Project     |      |
| Comments    |      |
| Prepared by | Date |

## SPECIFICATION FEATURES

### A...Baffle

One piece seamless baffle presents a clean finished appearance.

### B...Trim Ring

White Polycarbonate trim ring.

### C...Housing

Double wall housing construction. Door in outer housing allows junction box access from below ceiling.

### D...Junction Box

Junction box is listed for through branch circuit wiring and has seven 1/2" knockouts with true pry-out slots.

### E...GOT NAIL! Pass-N-Thru™ Bar Hangers

Bar Hanger Features include:

- Pre-installed nail easily installs in regular lumber, engineered lumber and laminated beams
- Safety and guidance system prevents snagging, ensures smooth straight nail penetration and allows bar hangers to be easily removed if necessary.
- Automatic levelling flange aligns the housing and lets you hold the housing in place with one hand while driving nails
- Housing can be positioned at any point within 24" joist span
- Score lines allow "toeless" shortening for 12" joists
- Bar hangers may be repositioned 90°
- Bar hangers do not need to be removed from frame for shortening

- Integral T-bar clips snaps onto T-bars - no additional clips required

### F...Socket

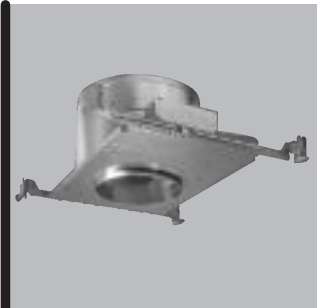
Exclusive socket aiming mechanism swivels and rotates to properly align lamp. Slope indicator provides quick and consistent lamp settings (factory set for 3/12 slope).

### G...Integral Thermal Protector

Integral thermal protector guards against improper lamping.

### Labels

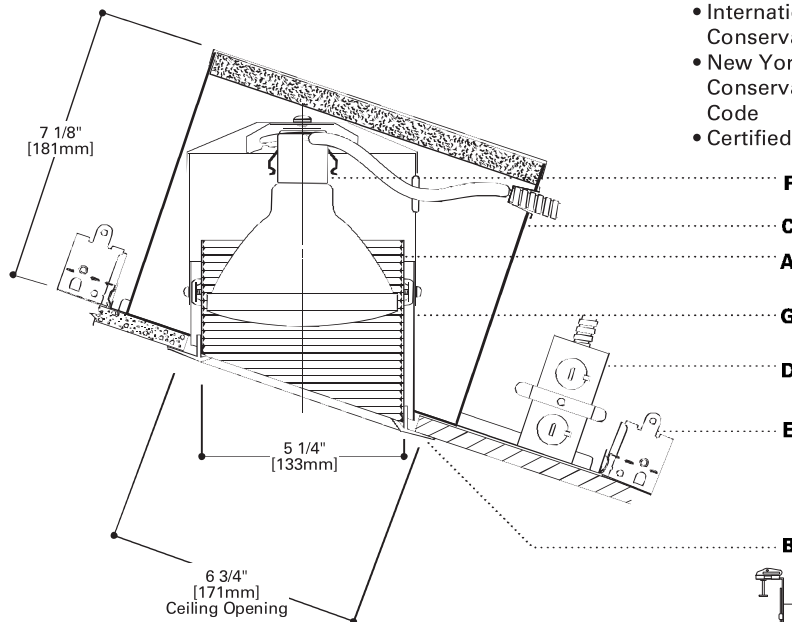
- UL Listed for Damp Location
  - UL listed for Feed Through
  - UL listed for Direct Contact with Insulation and combustible material
  - CSA Certified
- Meets following requirements:
- State of California Title 24
  - Washington State Energy Code
  - International Energy Conservation Code (IECC)
  - New York State Energy Conservation Construction Code
  - Certified Under ASTM-E283



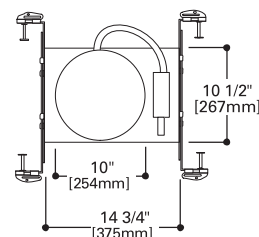
## H47ICAT

2 0 W 1 2 V M R 1 6  
 7 5 W R 3 0  
 7 5 W A 1 9  
 9 0 W P A R 3 8  
 1 0 0 W R 3 0

6" RECESSED  
 INCANDESCENT  
 DOWNLIGHT



B Top View



## TRIMS

## ORDERING INFORMATION

SAMPLE NUMBER: H47ICAT498P

Complete unit consists of housing and trim.

## Housing

H47ICAT=6" AIR-TITE IC  
Slope Ceiling Housing

## Trims

**BAFFLES**

**Coilex Baffle**  
**90W PAR38**  
 498P=Black  
 498W=White  
 OD: 7 7/8" (200mm)



**Coilex Baffle with Reflector**  
**75W A19**  
 496P=Black  
 496W=White  
 OD: 7 7/8" (200mm)

**ADJUSTABLES**

**Coilex Baffle Eyeball**  
**75W R30, 65W BR30**  
 417P=Black  
 417PB=Polished Brass  
 417W=White  
 OD: 8" (203mm)



**Eyeball-30° Tilt**  
**100W R30, 85W BR30**  
 78P=Satin White  
 78B=Brass  
 78PB=Polished Brass  
 78PAT=White Air-Tite  
 OD: 8" (203mm)



**Baffle Eyeball**  
**20W 12V MR16**  
 1417P=Black Baffle, White Eyeball, White Trim Ring  
 1417W=White Baffle, White Eyeball, White Trim Ring  
 OD: 8" (203mm)



**Lensed Shower Light**  
**60W A19**  
 170PS=Glass Lens, White Trim Ring wet location  
 Listed  
 OD: 8" (203mm)

Note: Specifications and Dimensions subject to change without notice.

Visit our web site at [www.cooperlighting.com](http://www.cooperlighting.com)