

# NEER™ Safety Plates and Switch Box Supports

NEC:  
Rated for Ordinary Locations

NEC:  
Rated for Ordinary Locations

NEC:  
Rated for Ordinary Locations

## SP: Safety Plates

### Applications

- Installed over areas in wooden structures where cables are run to protect cable insulation from being damaged by protruding screws or nails.

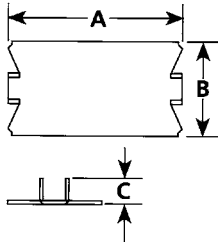
### Standard Material

- Pre-galvanized steel



SP-100

### Illustrated Dimensions



| Trade Size<br>(Inches) | Dimensions in<br>Millimeters (Inches) |                |                | Catalog<br>Number |
|------------------------|---------------------------------------|----------------|----------------|-------------------|
|                        | A                                     | B              | C              |                   |
| 1/16x1-<br>1/2x2-1/2   | 63.5<br>(2.50)                        | 38.9<br>(1.53) | 11.4<br>(0.45) | <b>SP-100</b>     |
| 1/16x1-<br>1/2x2-1/2   | 63.5<br>(2.50)                        | 38.9<br>(1.53) | 11.4<br>(0.45) |                   |

## HI: Switch Box Supports

### Applications

- To support attachment of boxes in drywall, paneling, etc., where there are no means of attaching the box to a mounting structure.

### Feature

- Two are required per box.
- Sold in pairs.

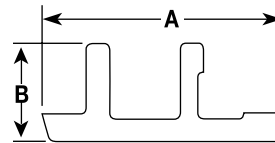
### Standard Material

- Pre-galvanized steel



HI-102

### Illustrated Dimensions



| Trade Size<br>(Inches) | Dimensions in<br>Millimeters (Inches) |                | Catalog<br>Number |
|------------------------|---------------------------------------|----------------|-------------------|
|                        | A                                     | B              |                   |
| —                      | 129.8<br>(5.11)                       | 57.2<br>(2.25) | <b>HI-102</b>     |

## KO: Knockout Seals

### Applications

- To close unused opening or knockout in sheet metal box, enclosure or cabinet.

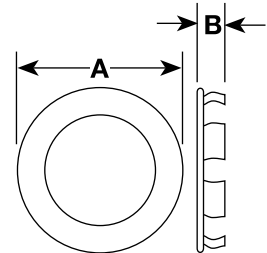
### Standard Material

- Steel/zinc plated



KO-50

### Illustrated Dimensions



| Trade Size<br>(Inches) | Dimensions in<br>Millimeters (Inches) |             | Catalog<br>Number |
|------------------------|---------------------------------------|-------------|-------------------|
|                        | A                                     | B           |                   |
| 1/2                    | 27.4 (1.08)                           | 10.2 (0.40) | <b>KO-50</b>      |
| 3/4                    | 31.8 (1.25)                           | 8.4 (0.33)  | <b>KO-75</b>      |
| 1                      | 37.6 (1.48)                           | 8.4 (0.33)  | <b>KO-100</b>     |
| 1-1/4                  | 46.0 (1.81)                           | 8.4 (0.33)  | <b>KO-125</b>     |
| 1-1/2                  | 56.1 (2.21)                           | 9.4 (0.37)  | <b>KO-150</b>     |
| 2                      | 68.1 (2.68)                           | 9.7 (0.38)  | <b>KO-200</b>     |

# NEER™ Safety Plates and Switch Box Supports

NEC:  
Rated for Ordinary Locations

NEC:  
Rated for Ordinary Locations

NEC:  
Rated for Ordinary Locations

## SP: Safety Plates

### Applications

- Installed over areas in wooden structures where cables are run to protect cable insulation from being damaged by protruding screws or nails.

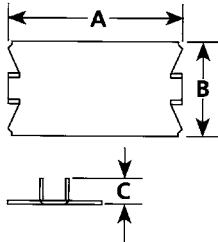
### Standard Material

- Pre-galvanized steel



SP-100

### Illustrated Dimensions



| Trade Size<br>(Inches) | Dimensions in<br>Millimeters (Inches) |                |                | Catalog<br>Number |
|------------------------|---------------------------------------|----------------|----------------|-------------------|
|                        | A                                     | B              | C              |                   |
| 1/16x1-<br>1/2x2-1/2   | 63.5<br>(2.50)                        | 38.9<br>(1.53) | 11.4<br>(0.45) | <b>SP-100</b>     |
| 1/16x1-<br>1/2x2-1/2   | 63.5<br>(2.50)                        | 38.9<br>(1.53) | 11.4<br>(0.45) |                   |

## HI: Switch Box Supports

### Applications

- To support attachment of boxes in drywall, paneling, etc., where there are no means of attaching the box to a mounting structure.

### Feature

- Two are required per box.
- Sold in pairs.

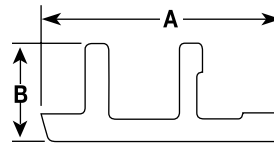
### Standard Material

- Pre-galvanized steel



HI-102

### Illustrated Dimensions



| Trade Size<br>(Inches) | Dimensions in<br>Millimeters (Inches) |                | Catalog<br>Number |
|------------------------|---------------------------------------|----------------|-------------------|
|                        | A                                     | B              |                   |
| —                      | 129.8<br>(5.11)                       | 57.2<br>(2.25) | <b>HI-102</b>     |

## KO: Knockout Seals

### Applications

- To close unused opening or knockout in sheet metal box, enclosure or cabinet.

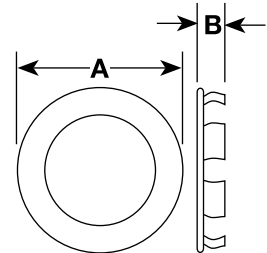
### Standard Material

- Steel/zinc plated



KO-50

### Illustrated Dimensions



| Trade Size<br>(Inches) | Dimensions in<br>Millimeters (Inches) |             | Catalog<br>Number |
|------------------------|---------------------------------------|-------------|-------------------|
|                        | A                                     | B           |                   |
| 1/2                    | 27.4 (1.08)                           | 10.2 (0.40) | <b>KO-50</b>      |
| 3/4                    | 31.8 (1.25)                           | 8.4 (0.33)  | <b>KO-75</b>      |
| 1                      | 37.6 (1.48)                           | 8.4 (0.33)  | <b>KO-100</b>     |
| 1-1/4                  | 46.0 (1.81)                           | 8.4 (0.33)  | <b>KO-125</b>     |
| 1-1/2                  | 56.1 (2.21)                           | 9.4 (0.37)  | <b>KO-150</b>     |
| 2                      | 68.1 (2.68)                           | 9.7 (0.38)  | <b>KO-200</b>     |