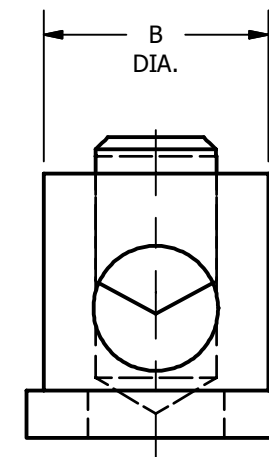
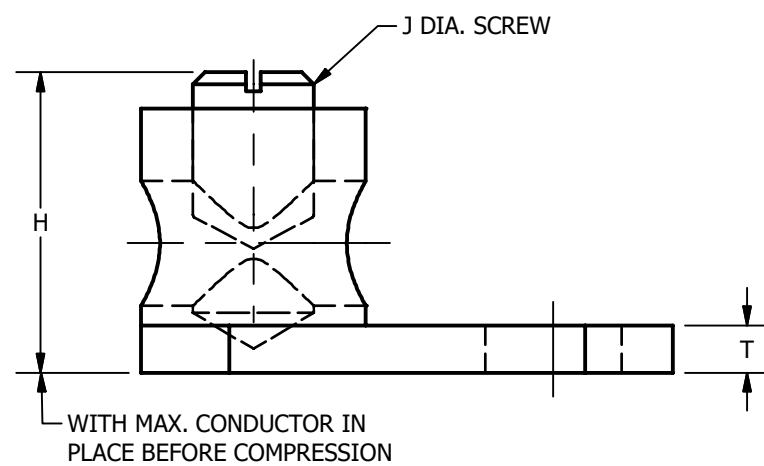
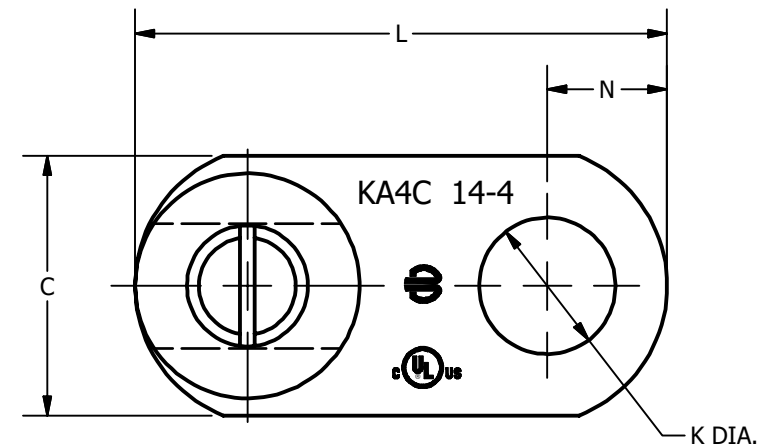


CATALOG NUMBER	ACCOMMODATES COPPER CABLE	B DIA.	C	H	J DIA. SCREW	K DIA.	L	N	T	FINISH	SCREW DESCRIPTION
KA8C	#14 SOL. (.064 DIA.) - #8 STR. (.146 DIA.)	.32 [8.1]	.38 [9.7]	.607 [15.42]	12-24 UNC	.21 [5.3]	.81 [20.6]	.19 [4.8]	.08 [2.0]	--	FLAT HD. (ROUND TIP) ZINC PLATED SET SCREW. STEEL
KA4C	#14 SOL. (.064 DIA.) - #4 STR. (.232 DIA.)	.47 [11.9]	.54 [13.7]	.77 [19.6]	5/16"-24 UNF	.28 [7.1]	1.11 [28.2]	.25 [6.4]	.10 [2.8]	--	
KA8CTN	#14 SOL. (.064 DIA.) - #8 STR. (.146 DIA.)	.32 [8.1]	.38 [9.7]	.607 [15.42]	12-24 UNC	.21 [5.3]	.81 [20.6]	.19 [4.8]	.08 [2.0]	TIN PLATE	FLAT HD. (FLAT TIP) NICKEL PLATED SCREW. STEEL
KA4CTN	#14 SOL. (.064 DIA.) - #4 STR. (.232 DIA.)	.47 [11.9]	.54 [13.7]	.77 [19.6]	5/16"-24 UNF	.28 [7.1]	1.11 [28.2]	.25 [6.4]	.10 [2.8]	TIN PLATE	
KA4CG16NKHEX	#14 SOL. (.064 DIA.) - #4 STR. (.232 DIA.)	.47 [11.9]	.54 [13.7]	1.02 [26]	5/16"-24 UNF	.32 [8.1]	1.11 [28.2]	.25 [6.4]	.10 [2.8]	NICKEL PLATE	HEX HD. (FLAT TIP) NICKEL PLATED SCREW. STEEL
KA4CG16	#14 SOL. (.064 DIA.) - #4 STR. (.232 DIA.)	.47 [11.9]	.54 [13.7]	.77 [19.6]	5/16"-24 UNF	.32 [8.1]	1.11 [28.2]	.25 [6.4]	.10 [2.8]	--	FLAT HD. (ROUND TIP) ZINC PLATED SET SCREW. STEEL
KA4CG16TN	#14 SOL. (.064 DIA.) - #4 STR. (.232 DIA.)	.47 [11.9]	.54 [13.7]	.77 [19.6]	5/16"-24 UNF	.32 [8.1]	1.11 [28.2]	.25 [6.4]	.10 [2.8]	TIN PLATE	

REV	DATE	DESCRIPTION	ECO	BY	C'H'K.
D	03/14/2023	ADDED KA4CG16TN PER FOCUS FPN2303022	230310028550	PB	RG



**NOTES:**

- 1 NOT "UL" LISTED OR "CSA" CERTIFIED.
2. MATERIAL : BODY - COPPER ALLOY  
FINISH - SEE TABLE  
SCREW DESC. - SEE TABLE
3. DIMENSIONS IN BRACKETS [ ] ARE IN MILLIMETERS.

TO ORDER BURNDY® PRODUCTS CALL  
 UNITED STATES  
 1-800-346-4175 (LONDONDERRY, NH)  
 CANADA:  
 1-800-387-6487  
 FOR PRODUCT INFO: <http://www.burndy.com>

COPPER TERMINAL	
ITEM NO: N/A	
CAT. NO: KAC, KACTN (TABLE)	
DRAWN BY: H.C.	3/14/1984
CHECKER: A.J.M.	4/13/1984
DSN APRVL: M.J.M.	6/12/1984
MFG APRVL: --	
QA APRVL: --	
MKT APRVL: --	
PROD FAM: --	
PROJECT #: --	SIZE
DOCUMENT TYPE: SALES	B
REL LEVEL: Released	
DRAWING NO	REV
SC088846-01	D
SHEET 1 OF 1	

