

TYPE GRL
Ground Rod Clamp



UL467 Listed. Acceptable for direct burial.

Catalog Number	Rod Size	Conductor Range	
		Min.	Max.
GRL3*	3/8	10 AWG	4 AWG
GRL4	1/2	10 AWG	2 AWG
GRL5	5/8	10 AWG	2 AWG
GRL6	3/4	10 AWG	2 AWG

* Item not UL Listed.

TYPE GRC
Bronze Ground Rod Clamps



High copper alloy ground connector for joining a range of cable to rod. UL467 Listed. Acceptable for direct burial. GRCT1/0 is range taking.

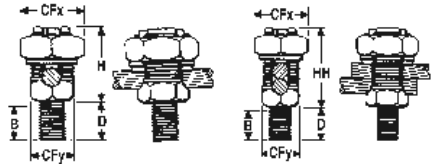
Catalog Number	Ground Rod	Conductor Range
GRC12	1/2	10 sol.-2 str.
GRC58	5/8	10 sol.-1 str.
GRC34	3/4	8 sol.-1/0 str.
GRCT1/0	1/2, 5/8, or 3/4	8 sol. - 1/0 str.

TYPES KC, K2C

SERVIT® POST™
For Copper Cable to Flat



SERVIT® POST™ used to ground one or two cables to steel structures, fence posts, and transformers. Also used to tap one or two cables from bus bar. One-wrench installation.



Catalog Number		Conductor		Stud Dia.	B	CFx	CFy	D	H	HH
Type KC*	Type K2C†	Str.	Sol.							
KC15	K2C15	12 - 9	12 - 8	1/4-20"	3/8"	1/2"	3/8"	1/2"	5/8"	7/8"
KC15B1	K2C15B1				1"					
KC17	K2C17	10 - 7	10 - 6	1/4-20"	3/8"	5/8"	7/16"	1/2"	7/8"	1"
KC17B1	K2C17B1				1"					
KC20	K2C20	10 - 5	10 - 4	5/16-18"	13/32"	11/16"	1/2"	5/8"	7/8"	1"
KC20B1	K2C20B1				27/32"					
KC22	K2C22	10 - 3	10 - 2	3/8-16"	15/32"	3/4"	5/8"	5/8"	1"	1-1/4"
KC22B1	K2C22B1				31/32"					
KC23	K2C23	8 - 2	10 - 1	3/8-16"	15/32"	13/16"	5/8"	5/8"	1"	1-3/8"
KC23B1	K2C23B1				31/32"					
KC25	K2C25	2 - 1/0	2 - 2/0	1/2-13"	9/16"	15/16"	3/4"	3/4"	1-1/8"	1-5/8"
KC25B1	K2C25B1				1-1/16"					
KC26	K2C26	2 - 1/0	2 - 3/0	1/2"-13"	17/32"	1"	7/8"	3/4"	1-3/8"	1-7/8"
KC26B1	K2C26B1				1-1/16"					
KC28	K2C28	1 - 4/0	1 - 4/0	5/8"-11"	3/4"	1-1/2"	1-3/16"	1"	1-3/4"	2-1/4"
KC28B1	K2C28B1				1-1/4"					
KC31	K2C31	1 - 350	—	5/8"-11"	3/4"	1-11/16"	1-3/8"	1"	2-1/4"	2-7/8"
KC31B1	K2C31B1				1-1/4"					
KC34	K2C34	3/0 - 500	—	3/4-10	1"	2"	1-5/8"	1-1/4"	2-3/8"	3-1/4"
KC34B1	K2C34B1				1-1/2"					

* = 1 conductor † = 2 conductors