



# SYLVANIA LED

## Lamp Catalog

2017-2018



## Important Notice

The data and suggested applications contained in this catalog, as well as any additional information our representatives may be able to furnish, are for general information only and are not intended and should not be taken as representations or warranties as to the suitability of a lamp for any particular application or use in any particular equipment, nor are our representatives authorized to make any such representations or give any such warranties. Applications and conditions of use are many and varied and beyond our control. We do not have the same degree of knowledge that the purchaser has with respect to the design of his equipment and the conditions of its use. Therefore, it is up to the purchaser to make his own determination as to the suitability of a lamp for his intended application or use and to assume responsibility for that determination.

The specifications and information shown in this catalog are believed to be accurate. Although LEDVANCE believes this information to be correct, no warranty is made or implied as to the accuracy of this information and LEDVANCE does not accept or assume responsibility of liability for errors, changes, omissions, or for harm resulting therefrom.

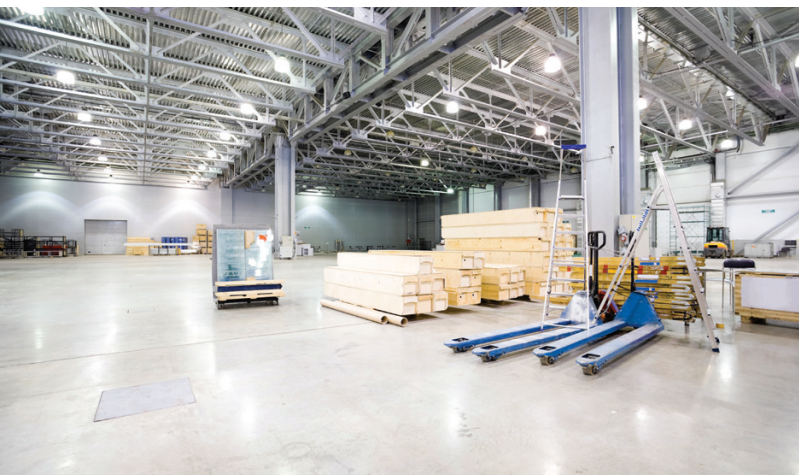
In accordance with our established policy to consistently improve our products, the specifications contained herein are subject to change without notice.

LEDVANCE Analytics & Metrology is a participant in the Energy Efficient Lighting (EEL) Program of the National Voluntary Laboratory Accreditation Program (NVLAP) and is accredited for testing of lighting products according to the guidelines for the EEL Program.

SYLVANIA lamp measurements are conducted in compliance with consensus methods including American National Standards Institute (ANSI), Canadian Standards Association (CSA), Commission Internationale de l'Eclairage (CIE), Illuminating Engineering Society of North America (IESNA) standards and practices, National Electrical Manufacturers Association (NEMA) guidelines, and test standards promulgated by the Department of Energy (DOE), California Energy Commission (CEC), and Environmental Protection Agency (EPA) specific to their regulations. Actual lamp performance may vary depending on application and environment (i.e. ambient temperature, input voltage, ballast type, etc.)

LEDVANCE designs and manufactures lamps to meet American National Standard Institutes (ANSI) and/or IEC (International Electrotechnical Commission) standards of construction and performance through Total Quality Manufacturing (TQM) practices where applicable. In addition, ballasts are designed and manufactured to meet Underwriters Laboratory (UL) and Canadian Standards Association (CSA) safety standards as necessary. Ratings may change as a result of changes made to remain compliant with modified or updated standards. LEDVANCE will release new or updated technical bulletins when appropriate. All product data presented in this catalog supersedes all data published before 10/01/17.

Many SYLVANIA products listed in this catalog qualify under the North American Free Trade Agreement (NAFTA) as manufactured in Canada, the United States of America or Mexico.





## Advancing light in manufacturing

LEDVANCE is committed to investing in a robust domestic manufacturing and logistics network for greater flexibility and higher service levels. We are expanding our manufacturing capabilities beyond our traditional SYLVANIA lighting portfolio. For generations, we have developed new technologies and expanded portfolios to meet the ever-changing needs of more demanding codes, standards and design trends. Our manufacturing locations, as well as distribution and customer service centers, are ISO 9001 and ISO14001 certified following stringent quality and environmental management systems to ensure performance and sustainable practice.

“Our high-quality SYLVANIA light bulbs are a result of over a hundred years of lighting experience in the US. Some of our best innovations come from our manufacturing employees in the factories. All of our employees in our factories and distribution centers are proud, hard-working, and dedicated to delivering the SYLVANIA general lighting you see on retail shelves, through our industrial commercial channel partners, and online,” said Graham Wark, head of North America manufacturing, LEDVANCE.

# A century of ILLUMINATION

Our leadership in the industry results from our proud legacy, which extends back to the dawn of the twentieth century, and points the way for continued success in years to come.

We're proud of our long standing reputation of providing solutions in homes, businesses, institutions and a broad range of specialty applications. Over the years, we've changed to reflect the markets we serve and the customers we reach.

But one thing has remained constant – a belief that our ideas can make a difference in every person's life and that our products reflect a commitment to making our world more comfortable, more productive and more imaginative.

- |             |                             |             |  |
|-------------|-----------------------------|-------------|--|
| <b>1964</b> | METALARC®                   | <b>2001</b> | SUPER METALARC, OCTRON XP®, XPS® ECOLOGIC            |
| <b>1972</b> | LUMALUX®                    | <b>2002</b> | OCTRON SUPERSAVER ECOLOGIC                           |
| <b>1973</b> | UNALUX®                     | <b>2005</b> | PENTRON PREMIER™ ECOLOGIC                            |
| <b>1974</b> | SUPERSAVER® T12             | <b>2005</b> | DULUX L SUPERSAVER ECOLOGIC                          |
| <b>1981</b> | OCTRON®                     | <b>2009</b> | METALARC POWERBALL EL ECOLOGIC                       |
| <b>1982</b> | DULUX®                      | <b>2009</b> | OCTRON XP XL ECOLOGIC                                |
| <b>1983</b> | SUPERSAVER PLUS™            | <b>2010</b> | DULUX SUPERSAVER ECOLOGIC                            |
| <b>1984</b> | LUMALUX ECOLOGIC®           | <b>2010</b> | METALARC POWERBALL Ceramic 15W TF                    |
| <b>1985</b> | OCTRON CURVALUME®           | <b>2011</b> | PENTRON HO XL ECOLOGIC                               |
| <b>1992</b> | METALARC PRO-TECH®          | <b>2012</b> | ULTRA IQ™ LED Lamps with integrated wireless dimming |
| <b>1995</b> | LUMALUX PLUS®               | <b>2012</b> | ULTRA SE™ LED Lamps with Sunset Effect               |
| <b>1995</b> | METALARC Pulse Start        | <b>2013</b> | OCTRON® 800 XP® XL Ecologic® 3 T8 Fluorescent Lamp   |
| <b>1996</b> | METALARC SUPERSAVER         | <b>2014</b> | ORIOS LED Lamps                                      |
| <b>1996</b> | DULUX D ECOLOGIC            | <b>2014</b> | SubstiTUBE® IS T8 LED Lamp                           |
| <b>1997</b> | ICETRON®                    | <b>2014</b> | ULTRA HE T8 LED Retrofit Kit                         |
| <b>1997</b> | PENTRON®                    | <b>2015</b> | SubstiTUBE IPS LED T8 Lamps                          |
| <b>1997</b> | PENTRON HO                  | <b>2015</b> | ULTRA LED™ High Output PAR Lamps                     |
| <b>1999</b> | METALARC POWERBALL® Ceramic | <b>2015</b> | Contractor Series LED Lamp Portfolio                 |
|             |                             | <b>2017</b> | LEDlescent™ T8 Ballast Free Lamps                    |
|             |                             | <b>2017</b> | Renaissance™ PAR Family                              |

# LED

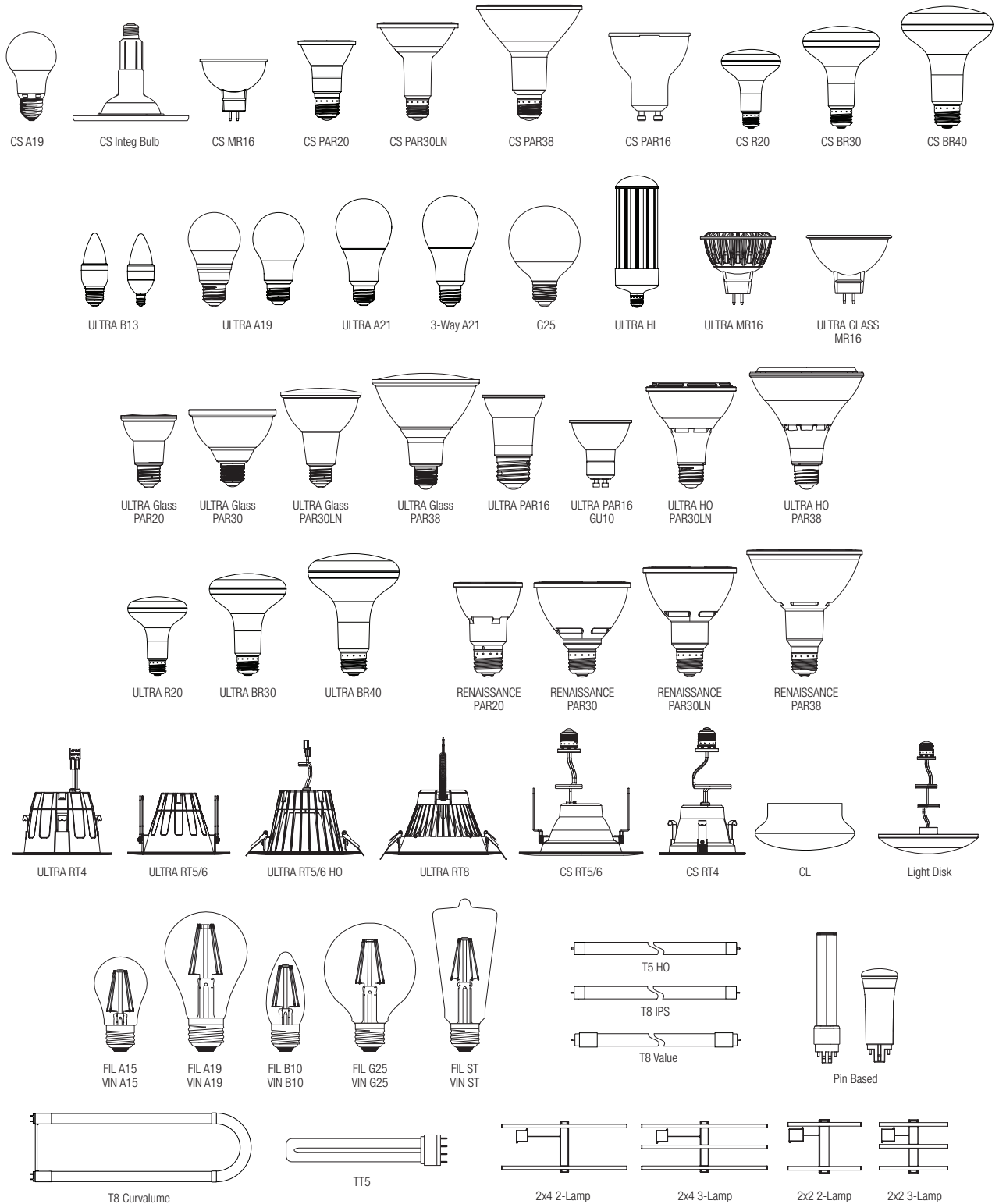


## Table of contents

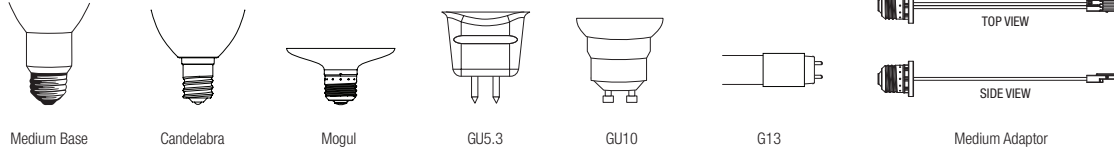
Lamp and Base Identification	2
General Purpose	4
Decorative	7
Reflector	10
Directional	11
Downlights	15
Tubes	19
Troffers	22
High Lumen Integrated Ballast Retrofit	23
Smart Wireless	24
Notes	26

## LED LAMP SHAPES

A bulb designation consists of a letter(s) to indicate the shape and a figure to indicate the approximate major diameter in eighths of an inch. For example, an A19 bulb is an Aline, 19/8 of an inch in diameter.



## BASE IDENTIFICATION



## HOW TO READ PRODUCT INFORMATION – LED

Nominal Wattage	MOL (in)	Base	Product Number	Ordering Abbreviation	Pkg Qty	Beam Angle (deg)	Average Rated Life (hrs)	CCT (K) CRI	Approx. Initial Lumens at 25°C/77°F	Life in Years	Cost per Year	Notes
-----------------	----------	------	----------------	-----------------------	---------	------------------	--------------------------	-------------	-------------------------------------	---------------	---------------	-------

**Base** See Base Identification above.

**Notes** All notes that apply to a specific product will appear in this space. The explanations of the notes are in the notes section.

**Ordering Abbreviation** A text description of the lamp. See below for several examples and explanations of some of the codes.

**Lumens, Beam Angle, CBCP** These columns may contain data for any of these values.

## HOW TO READ ORDERING ABBREVIATIONS

LED12A19/DIM/0/827		LED13PAR30LN/DIM/827/FL40		LED/RT6/700/827/FL80		LED12T8/L48/FG/830/SUB/G6	
LED	Lamp technology	LED	Lamp technology	LED	Lamp technology	LED	Lamp technology
12	Nominal wattage	13	Nominal wattage	RT6	Retrofit 6" housing	12	Nominal wattage
A19	Lamp shape	PAR30LN	Lamp shape	700	Lumen output	T8	Lamp shape
DIM	Dimmable	DIM	Dimmable	827	CRI: 80+; Color temperature 2700K	L48	Length: 48 inches
0	Omnidirectional	827	CRI: 80+; Color temperature 2700K	FL80	Flood 80°	FG	Frosted Glass
827	CRI: 80+; Color temperature 2700K	FL40	Flood 40°			830	CRI: 80+; Color temperature 3000K
						SUB	SubstiTUBE
						G6	6th Generation LED Lamp technology

<sup>1</sup>Life in years based on 3 hours per day

<sup>2</sup>Cost per year based on 3 hours per day, \$0.11 per kWh





ULTRA A19



FILAMENT A19

## General Purpose LED Lamps

### ULTRA LED™ A-line Lamps (120V, Dimmable)

Replaces 40W, 60W, 75W &amp; 100W A19 Incandescent lamps

Nominal Wattage	Bulb Shape	MOL (in)	Base	Product Number	Ordering Abbreviation	Pkg Qty	Finish	Rated Life L <sub>70</sub> (hrs)	Initial Lumens	LPW	CCT (K)	CRI	Life in Years <sup>1</sup>	Cost per Year <sup>2</sup>	Notes
5.5	A19	4.21	Medium	74435	LED5.5A19/DIM/O/827/U	1	Frosted	15,000	450	82	2700	80	13.7	\$0.66	★2,4,5
				74398	LED5.5A19/DIM/O/830/U	1	Frosted	15,000	450	82	3000	80	13.6	\$0.66	★2,4,5
				74419	LED5.5A19/DIM/O/850/U/RP	1	Frosted	15,000	450	82	5000	80	13.7	\$0.66	★2,4,5
9	A19	4.23	Medium	74436	LED9A19/DIM/O/827/U	1	Frosted	15,000	800	89	2700	80	13.7	\$1.08	★2,4,5
9	A19	4.21	Medium	74399	LED9A19/DIM/O/830/U	1	Frosted	15,000	800	89	3000	80	13.7	\$1.08	★2,4,5
9	A19	4.23	Medium	78037	LED9A19/DIM/O/835/U/RP	1	Frosted	15,000	800	89	3500	80	13.7	\$1.08	★2,4,5
				78038	LED9A19/DIM/O/835/U/RP4	4	Frosted	15,000	800	89	3500	80	13.7	\$1.08	★2,4,5
				78039	LED9A19/DIM/O/850/U/RP	1	Frosted	15,000	800	89	5000	80	13.7	\$1.08	★2,4,5
				78040	LED9A19/DIM/O/850/U/RP4	4	Frosted	15,000	800	89	5000	80	13.7	\$1.08	★2,4,5
12	A19	4.41	Medium	74437	LED12A19/DIM/O/827/U	1	Frosted	15,000	1100	92	2700	80	13.7	\$1.44	★2,4,5
				74424	LED12A19/DIM/O/827/U/RP	1	Frosted	15,000	1100	92	2700	80	13.7	\$1.44	★2,4,5
				74425	LED12A19/DIM/O/827/U/RP4	4	Frosted	15,000	1100	92	2700	80	13.7	\$1.44	★2,4,5
				74426	LED12A19/DIM/O/835/U/RP	1	Frosted	15,000	1100	92	3500	80	13.7	\$1.44	★2,4,5
				74427	LED12A19/DIM/O/835/U/RP4	4	Frosted	15,000	1100	92	3500	80	13.7	\$1.44	★2,4,5
				74428	LED12A19/DIM/O/850/U/RP	1	Frosted	15,000	1100	92	5000	80	13.7	\$1.44	★2,4,5
				74429	LED12A19/DIM/O/850/U/RP4	4	Frosted	15,000	1100	92	5000	80	13.7	\$1.44	★2,4,5
16	A21	5.16	Medium	74438	LED16A21/DIM/O/827/U	1	Frosted	15,000	1600	100	2700	80	13.7	\$1.92	★2,4,5
				73187	LED16A21/DIM/O/827/U/RP	1	Frosted	15,000	1600	100	2700	80	13.7	\$1.92	★2,4,5
				73188	LED16A21/DIM/O/827/U/RP4	4	Frosted	15,000	1600	100	2700	80	13.7	\$1.92	★2,4,5
				73189	LED16A21/DIM/O/835/U/RP	1	Frosted	15,000	1600	100	3500	80	13.7	\$1.92	★2,4,5
				73190	LED16A21/DIM/O/835/U/RP4	4	Frosted	15,000	1600	100	3500	80	13.7	\$1.92	★2,4,5
				73191	LED16A21/DIM/O/850/U/RP	1	Frosted	15,000	1600	100	5000	80	13.7	\$1.92	★2,4,5
				72978	LED16A21/DIM/O/850/U/RP4	4	Frosted	15,000	1600	100	5000	80	13.7	\$1.92	★2,4,5

### ULTRA LED A19 Filament Lamps (120V, Dimmable)

Replaces 40W &amp; 60W A19 Incandescent lamps

Nominal Wattage	Bulb Shape	MOL (in)	Base	Product Number	Ordering Abbreviation	Pkg Qty	Finish	Rated Life L <sub>70</sub> (hrs)	Initial Lumens	LPW	CCT (K)	CRI	Life in Years <sup>1</sup>	Cost per Year <sup>2</sup>	Notes
4.5	A19	4.13	Medium	74414	LED4.5A19/DIM/827/FIL	1	Clear	15,000	450	104	2700	80	13.7	\$0.54	★2,4,5
				74590	LED4.5A19/DIM/827/FIL/G2/RP	1	Clear	15,000	450	100	2700	80	13.7	\$0.54	★2,4,5
6.5	A19	4.13	Medium	74416	LED6.5A19/DIM/827/FIL	1	Clear	15,000	800	123	2700	80	13.7	\$0.78	★2,4,5
				74591	LED6.5A19/DIM/827/FIL/G2/RP	1	Clear	15,000	800	123	2700	80	13.7	\$0.78	★2,4,5

### ULTRA LED Premium Dimmable A19 Lamp (120V, CCT Dimming)

Replaces 60W A19 Incandescent lamps

Nominal Wattage	Bulb Shape	MOL (in)	Base	Product Number	Ordering Abbreviation	Pkg Qty	Finish	Rated Life L <sub>70</sub> (hrs)	Initial Lumens	LPW	CCT (K)	CRI	Life in Years <sup>1</sup>	Cost per Year <sup>2</sup>	Notes
9	A19	4.21	Medium	74479	LED9A19/DIM/O/SE/830/RP	1	Frosted	15,000	800	89	3000	80	13.7	\$1.08	★2,4,5

<sup>1</sup>Life in years based on 3 hours per day<sup>2</sup>Cost per year based on 3 hours per day, \$0.11 per kWh



ULTRA 3-Way



CS A19

**General Purpose LED Lamps (cont.)****ULTRA LED™ A-line 3-Way Lamp (120V)**

Replaces 3-Way A19 Incandescent lamps

Nominal Wattage	Bulb Shape	MOL (in)	Base	Product Number	Ordering Abbreviation	Pkg Qty	Finish	Rated Life L <sub>70</sub> (hrs)	Initial Lumens	LPW	CCT (K)	CRI	Life in Years <sup>1</sup>	Cost per Year <sup>2</sup>	Notes
4.5/8.5/15	A21	5.26	Medium	74021	LED15A21/3WAY/0/827/RP	1	Frosted	25,000	450/800/1600	100/94/106	2700	80	22.8	\$.54/1.02/1	2,5

**Contractor Series LED A19 Lamps (120V, Non-Dimmable)**

Replaces 40W, 60W, 75W &amp; 100W A19 Incandescent lamps

Nominal Wattage	Bulb Shape	MOL (in)	Base	Product Number	Ordering Abbreviation	Pkg Qty	Finish	Rated Life L <sub>70</sub> (hrs)	Initial Lumens	LPW	CCT (K)	CRI	Life in Years <sup>1</sup>	Cost per Year <sup>2</sup>	Notes
6	A19	4.33	Medium	74076	LED6A19/F/827/10YV/RP	1	Frosted	11,000	450	75	2700	80	10.0	\$0.70	2,5,8
				74077	LED6A19/F/827/10YV/RP2	2	Frosted	11,000	450	75	2700	80	10.0	\$0.70	2,5,8
				74079	LED6A19/F/827/10YV/RP4	4	Frosted	11,000	450	75	2700	80	10.0	\$0.70	2,5,8
				79701	LED6A19/F/835/10YV/RP	1	Frosted	11,000	450	75	3500	80	10.0	\$0.72	2,5,8
				79703	LED6A19/F/835/10YV/RP4	4	Frosted	11,000	450	75	3500	80	10.1	\$0.72	2,5,8
				74080	LED6A19/F/850/10YV/RP	1	Frosted	11,000	450	75	5000	80	10.0	\$0.72	2,5,8
				74081	LED6A19/F/850/10YV/RP2	2	Frosted	11,000	450	75	5000	80	10.0	\$0.72	2,5,8
				74084	LED6A19/F/850/10YV/RP4	4	Frosted	11,000	450	75	5000	80	10.0	\$0.72	2,5,8
8.5	A19	4.33	Medium	73885	LED8.5A19/F/827/10YV/RP	1	Frosted	11,000	800	94	2700	80	10.0	\$1.02	2,5,8
				73886	LED8.5A19/F/827/10YV/RP2	2	Frosted	11,000	800	94	2700	80	10.1	\$0.72	2,5,8
				73888	LED8.5A19/F/827/10YV/RP4	4	Frosted	11,000	800	94	2700	80	10.0	\$1.02	2,5,8
				72629	LED8.5A19/F/835/10YV/RP	1	Frosted	11,000	800	94	3500	80	10.0	\$1.02	2,5,8
				79702	LED8.5A19/F/835/10YV/RP	1	Frosted	11,000	800	94	3500	80	10.1	\$1.02	2,5,8
				79704	LED8.5A19/F/835/10YV/RP4	4	Frosted	11,000	800	94	3500	80	10.1	\$1.02	2,5,8
				74321	LED8.5A19/F/841/10YV	1	Frosted	11,000	800	94	4100	80	10.0	\$1.02	2,5,8
				79281	LED8.5A19/F/850/10YV/RP	1	Frosted	11,000	800	94	5000	80	10.0	\$1.02	2,5,8
				79282	LED8.5A19/F/850/10YV/RP2	2	Frosted	11,000	800	94	5000	80	10.0	\$1.02	2,5,8
				79284	LED8.5A19/F/850/10YV/RP4	4	Frosted	11,000	800	94	5000	80	10.0	\$1.02	2,5,8
8.5	A19	4.33	GU24 Bi-Pin	78106	LED8.5A19/F/827/GU24/10YV/RP	1	Frosted	11,000	800	94	2700	80	10.1	\$1.02	2,5,8
				78107	LED8.5A19/F/850/GU24/10YV/RP	1	Frosted	11,000	800	94	5000	80	10.1	\$1.02	2,5,8
12	A19	4.29	Medium	79291	LED12A19/F/827/10YV/RP	1	Frosted	11,000	1100	92	2700	80	10.0	\$1.44	2,5,8
				78097	LED12A19/F/827/10YV/RP4	4	Frosted	11,000	1100	92	2700	80	10.0	\$1.44	2,5,8
				78096	LED12A19/F/835/10YV/RP	1	Frosted	11,000	1100	92	3500	80	10.0	\$1.44	2,5,8
				78099	LED12A19/F/835/10YV/RP4	4	Frosted	11,000	1100	92	3500	80	10.0	\$1.44	2,5,8
				79293	LED12A19/F/850/10YV/RP	1	Frosted	11,000	1100	92	5000	80	10.0	\$1.44	2,5,8
				78100	LED12A19/F/850/10YV/RP4	4	Frosted	11,000	1100	92	5000	80	10.0	\$1.44	2,5,8
14	A19	4.29	Medium	79292	LED14A19/F/827/10YV/RP	1	Frosted	11,000	1500	107	2700	80	10.0	\$1.68	2,5,8
				78101	LED14A19/F/827/10YV/RP4	4	Frosted	11,000	1500	107	2700	80	10.0	\$1.66	2,5,8
				78098	LED14A19/F/835/10YV/RP	1	Frosted	11,000	1500	107	3500	80	10.0	\$1.68	2,5,8
				78102	LED14A19/F/835/10YV/RP4	4	Frosted	11,000	1500	107	3500	80	10.0	\$1.68	2,5,8
				79294	LED14A19/F/850/10YV/RP	1	Frosted	11,000	1500	107	5000	80	10.0	\$1.68	2,5,8
				78103	LED14A19/F/850/10YV/RP4	4	Frosted	11,000	1500	107	5000	80	10.0	\$1.68	2,5,8

<sup>1</sup>Life in years based on 3 hours per day<sup>2</sup>Cost per year based on 3 hours per day, \$0.11 per kWh



CS A19



FILAMENT ST

**General Purpose LED Lamps (cont.)****Contractor Series LED A19 Colored Lamps (120V, Non-Dimmable)**

Nominal Wattage	Bulb Shape	MOL (in)	Base	Product Number	Ordering Abbreviation	Pkg Qty	Finish	Rated Life L <sub>70</sub> (hrs)	Initial Lumens	LPW	CCT (K)	CRI	Life in Years <sup>1</sup>	Cost per Year <sup>2</sup>	Notes
8.5	A19	4.4	Medium	74712	LED8.5A19/RED/10YV/BL	1	Red	11,000	600	71	—	—	10.0	\$1.02	☀️ 2,5,8,17
				74713	LED8.5A19/GREEN/10YV/BL	1	Green	11,000	600	71	—	—	10.0	\$1.02	☀️ 2,5,8,17
				74714	LED8.5A19/BLUE/10YV/BL	1	Blue	11,000	600	71	—	—	10.0	\$1.02	☀️ 2,5,8,17
				74715	LED8.5A19/ORANGE/10YV/BL	1	Orange	11,000	600	71	—	—	10.0	\$1.02	☀️ 2,5,8,17
				74716	LED8.5A19/YELLOW/10YV/BL	1	Yellow	11,000	600	71	—	—	10.0	\$1.02	☀️ 2,5,8,17
				74717	LED8.5A19/PURPLE/10YV/BL	1	Purple	11,000	600	71	—	—	10.0	\$1.02	☀️ 2,5,8,17

**ULTRA LED™ ST19 Filament Lamps (120V, Dimmable)**

Replaces 40W &amp; 60W A19 Incandescent lamps

Nominal Wattage	Bulb Shape	MOL (in)	Base	Product Number	Ordering Abbreviation	Pkg Qty	Finish	Rated Life L <sub>70</sub> (hrs)	Initial Lumens	LPW	CCT (K)	CRI	Life in Years <sup>1</sup>	Cost per Year <sup>2</sup>	Notes
4.5	ST19	5.43	Medium	74324	LED4.5ST19/DIM/827/FIL	1	Clear	15,000	450	100	2700	80	13.7	\$0.54	☀️ ☀️ 2,4,5
				74588	LED4.5ST19/DIM/827/FIL/G2/RP	1	Clear	15,000	450	100	2700	80	13.7	\$0.54	☀️ ☀️ 2,4,5
6.5	ST19	5.43	Medium	74326	LED6.5ST19/DIM/827/FIL	1	Clear	15,000	800	123	2700	80	13.7	\$0.78	☀️ ☀️ 2,4,5
				74589	LED6.5ST19/DIM/827/FIL/G2/RP	1	Clear	15,000	800	123	2700	80	13.7	\$0.78	☀️ ☀️ 2,4,5

<sup>1</sup>Life in years based on 3 hours per day<sup>2</sup>Cost per year based on 3 hours per day, \$0.11 per kWh



FIL/VIN A15



VINTAGE A19



FILAMENT B10

## Decorative LED Lamps

### ULTRA LED™ A15 Filament Lamps (120V, Dimmable)

Replaces 40W A15 Incandescent lamps

Nominal Wattage	Bulb Shape	MOL (in)	Base	Product Number	Ordering Abbreviation	Pkg Qty	Finish	Rated Life L <sub>70</sub> (hrs)	Initial Lumens	LPW	CCT (K)	CRI	Life in Years <sup>1</sup>	Cost per Year <sup>2</sup>	Notes
4.5	A15	3.39	Medium	74410	LED4.5A15/827/FIL	1	Clear	15,000	470	104	2700	80	13.7	\$0.54	☀️, 📶, 2,4,5
				74409	LED4.5A15/827/FIL/RP	1	Clear	15,000	470	104	2700	80	13.7	\$0.54	☀️, 📶, 2,4,5
				74694	LED4.5A15/827/FIL/BL	1	Clear	15,000	470	104	2700	80	13.7	\$0.54	📶, ⭐, 2,4,5
4.5	A15	3.39	Candelabra	74412	LED4.5A15C/827/FIL	1	Clear	15,000	470	104	2700	80	13.7	\$0.54	☀️, 📶, 2,4,5
				74695	LED4.5A15C/827/FIL/BL	1	Clear	15,000	470	104	2700	80	13.7	\$0.54	📶, 2,4,5

### LED A15 Vintage Lamps (120V, Dimmable & Non-Dimmable)

Replaces 40W A15 Incandescent lamps

Nominal Wattage	Bulb Shape	MOL (in)	Base	Product Number	Ordering Abbreviation	Pkg Qty	Finish	Rated Life L <sub>70</sub> (hrs)	Initial Lumens	LPW	CCT (K)	CRI	Life in Years <sup>1</sup>	Cost per Year <sup>2</sup>	Notes
4	A15	3.39	Medium	74328	LED4A15/822/VIN	1	Amber	15,000	380	95	2200	80	13.7	\$0.48	☀️, 📶, 2,5,8
				75343	LED4A15/DIM/822/VIN/RP	1	Amber	15,000	380	95	2200	80	13.7	\$0.48	📶, 2,4,5
4	A15	3.39	Candelabra	74336	LED4A15C/822/VIN	1	Amber	15,000	380	95	2200	80	13.7	\$0.48	☀️, 📶, 2,5,8
				75345	LED4A15C/DIM/822/VIN/RP	1	Amber	15,000	380	95	2200	80	13.7	\$0.48	📶, 2,4,5

### LED A19 Vintage Lamps (120V, Dimmable & Non-Dimmable)

Replaces 40W &amp; 60W A19 Incandescent lamps

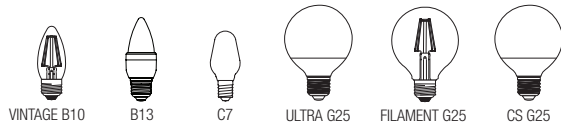
Nominal Wattage	Bulb Shape	MOL (in)	Base	Product Number	Ordering Abbreviation	Pkg Qty	Finish	Rated Life L <sub>70</sub> (hrs)	Initial Lumens	LPW	CCT (K)	CRI	Life in Years <sup>1</sup>	Cost per Year <sup>2</sup>	Notes
4	A19	4.13	Medium	77321	LED4A19/822/VIN	1	Amber	15,000	380	95	2200	80	13.7	\$0.48	☀️, 📶, 2,5,8
6	A19	4.13	Medium	77323	LED6A19/822/VIN	1	Amber	15,000	650	108	2200	80	13.7	\$0.72	☀️, 📶, 2,5,8
4.5	A19	4.13	Medium	75347	LED4.5A19/DIM/822/VIN/RP	1	Amber	15,000	380	84	2200	80	13.7	\$0.54	📶, 2,4,5
6.5	A19	4.13	Medium	75349	LED6.5A19/DIM/822/VIN/RP	1	Amber	15,000	650	100	2200	80	13.7	\$0.78	📶, 2,4,5

### ULTRA LED B10 Filament Lamps (120V, Dimmable)

Replaces 40W B10 Incandescent lamps

Nominal Wattage	Bulb Shape	MOL (in)	Base	Product Number	Ordering Abbreviation	Pkg Qty	Finish	Rated Life L <sub>70</sub> (hrs)	Initial Lumens	LPW	CCT (K)	CRI	Life in Years <sup>1</sup>	Cost per Year <sup>2</sup>	Notes
2	B10	4.69	Candelabra	70945	LED1.6B10/C/BENT/DIM/827/FIL/RP2	2	Clear	15,000	100	62.5	2700	80	13.7	\$0.19	📶, 2,4,5
				79592	LED1.6B10/C/BENT/DIM/850/FIL/RP2	2	Clear	15,000	100	62.5	5000	80	13.7	\$0.19	📶, 2,4,5
2	B10	4.25	Candelabra	79587	LED1.6B10/C/BLUNT/DIM/827/FIL	1	Clear	15,000	100	62.5	2700	80	13.7	\$0.19	📶, 2,4,5
3	B10	4.69	Candelabra	79595	LED2.5B10/C/BENT/DIM/827/FIL/RP2	2	Clear	15,000	200	80	2700	80	13.7	\$0.30	📶, 2,4,5
				79606	LED2.5B10/C/BENT/DIM/850/FIL/RP2	2	Clear	15,000	200	80	5000	80	13.7	\$0.30	📶, 2,4,5
4	B10	4.25	Candelabra	70941	LED3.5B10/C/BENT/DIM/827/FIL/RP2	2	Clear	15,000	350	100	2700	80	13.7	\$0.42	📶, 2,4,5
				70939	LED3.5B10/C/BENT/DIM/850/FIL/RP2	2	Clear	15,000	350	100	5000	80	13.7	\$0.42	📶, 2,4,5
5	B10	4.25	Medium	70942	LED4.5B10/BENT/DIM/827/FIL/RP2	2	Clear	15,000	400	88.89	2700	80	13.7	\$0.54	📶, 2,4,5
				70940	LED4.5B10/BENT/DIM/850/FIL/RP2	2	Clear	15,000	400	88.89	5000	80	13.7	\$0.54	📶, 2,4,5
5	B10	4.35	Medium	79610	LED5B10/BENT/DIM/827/FIL/RP2	2	Clear	15,000	500	100	2700	80	13.7	\$0.60	📶, 2,4,5
				79617	LED5B10/BENT/DIM/850/FIL/RP2	2	Clear	15,000	500	100	5000	80	13.7	\$0.60	📶, 2,4,5
5	B10	4.69	Candelabra	71169	LED5B10/C/BENT/827/DIM/FIL	1	Clear	15,000	450	90	2700	80	13.7	\$0.60	📶, 2,4,5
				79611	LED5B10/C/BENT/DIM/827/FIL/RP2	2	Clear	15,000	500	100	2700	80	13.7	\$0.60	📶, 2,4,5
				79616	LED5B10/C/BENT/DIM/850/FIL/RP2	2	Clear	15,000	500	100	5000	80	13.7	\$0.60	📶, 2,4,5

<sup>1</sup>Life in years based on 3 hours per day<sup>2</sup>Cost per year based on 3 hours per day, \$0.11 per kWh



## Decorative LED Lamps (cont.)

### LED B10 Vintage Lamps (120V, Dimmable)

Replaces 40W B10 Incandescent lamps

Nominal Wattage	Bulb Shape	MOL (in)	Base	Product Number	Ordering Abbreviation	Pkg Qty	Finish	Rated Life L <sub>70</sub> (hrs)	Initial Lumens	LPW	CCT (K)	CRI	Life in Years <sup>1</sup>	Cost per Year <sup>2</sup>	Notes
4	B10	4.25	Candelabra	79582	LED3.5B10/C/BENT/DIM/822/VIN/RP	1	Amber	15,000	360	90	2200	80	13.7	\$0.42	☑️ 2,4,5
				79578	LED4B10/DIM/C/BLUNT/822/VIN/RP	1	Amber	15,000	360	90	2200	80	13.7	\$0.48	☑️ 2,4,5
4	B10	3.56	Medium	79576	LED4B10/DIM/BLUNT/822/VIN/RP	1	Amber	15,000	360	90	2200	80	13.7	\$0.48	☑️ 2,4,5
4.5	B10	3.56	Medium	79580	LED4.5B10/DIM/BENT/822/VIN/RP	1	Amber	15,000	360	80	2200	80	13.7	\$0.48	☑️ 2,4,5

### ULTRA LED™ B13 Lamps (120V, Dimmable)

Replaces 60W B13 Incandescent lamps

Nominal Wattage	Bulb Shape	MOL (in)	Base	Product Number	Ordering Abbreviation	Pkg Qty	Finish	Rated Life L <sub>70</sub> (hrs)	Initial Lumens	LPW	CCT (K)	CRI	Life in Years <sup>1</sup>	Cost per Year <sup>2</sup>	Notes
7	B13	4.13	Medium	79626	LED7B13/BLUNT/DIM/827/G2/RP	1	Clear	15,000	500	71	2700	80	13.7	\$0.84	☑️ ☑️ ★ 2,4,5
7	B13	4.09	Candelabra	79627	LED7B13/C/BLUNT/DIM/827/G2/RP	1	Clear	15,000	500	71	2700	80	13.7	\$0.84	☑️ ☑️ ★ 2,4,5

### ULTRA LED C7 Lamp (120V)

Nominal Wattage	Bulb Shape	MOL (in)	Base	Product Number	Ordering Abbreviation	Pkg Qty	Finish	Rated Life L <sub>70</sub> (hrs)	Initial Lumens	LPW	CCT (K)	CRI	Life in Years <sup>1</sup>	Cost per Year <sup>2</sup>	Notes
0.6	C7	2.17	Candelabra	78563	LED1C7/C/865/2PK	12	Clear	15,000	4	—	6500	80	13.7	\$0.07	☑️ 2,5

### ULTRA LED G25 Glass Lamps (120V, Dimmable)

Replaces 40W G25 Incandescent lamps

Nominal Wattage	Bulb Shape	MOL (in)	Base	Product Number	Ordering Abbreviation	Pkg Qty	Finish	Rated Life L <sub>70</sub> (hrs)	Initial Lumens	LPW	CCT (K)	CRI	Life in Years <sup>1</sup>	Cost per Year <sup>2</sup>	Notes
4.5	G25	4.45	Medium	75317	LED4.5G25/DIM/F/827/GL/RP	1	Frosted	15,000	420	91	2700	80	13.7	\$0.54	☑️ ★ 2,4,5
				75298	LED4.5G25/DIM/F/830/GL/RP	1	Frosted	15,000	420	93	3000	80	13.7	\$0.54	☑️ ★ 2,4,5
				75315	LED4.5G25/DIM/F/850/GL/RP	1	Frosted	15,000	420	93	5000	80	13.7	\$0.54	☑️ ★ 2,4,5

### ULTRA LED G25 Filament Lamp (120V, Dimmable)

Replaces 40W G25 Incandescent lamps

Nominal Wattage	Bulb Shape	MOL (in)	Base	Product Number	Ordering Abbreviation	Pkg Qty	Finish	Rated Life L <sub>70</sub> (hrs)	Initial Lumens	LPW	CCT (K)	CRI	Life in Years <sup>1</sup>	Cost per Year <sup>2</sup>	Notes
4.5	G25	4.45	Medium	74587	LED4.5G25/DIM/827/FIL/G2/RP	1	Clear	15,000	450	100	2700	80	13.7	\$0.54	☑️ ★ 2,4,5

### Contractor Series LED G25 Lamps (120V, Non-Dimmable)

Replaces 40W and 60W G25 Incandescent lamps

Nominal Wattage	Bulb Shape	MOL (in)	Base	Product Number	Ordering Abbreviation	Pkg Qty	Finish	Rated Life L <sub>70</sub> (hrs)	Initial Lumens	LPW	CCT (K)	CRI	Life in Years <sup>1</sup>	Cost per Year <sup>2</sup>	Notes
5.5	G25	4.41	Medium	79699	LED5.5G25/827/10YV/RP2	2	Frosted	11,000	465	84.5	2700	82	10.0	\$0.66	☑️ 2,5,8
				79700	LED5.5G25/850/10YV/RP2	2	Frosted	11,000	465	84.5	5000	83	10.0	\$0.66	☑️ 2,5,8
7.5	G25	4.41	Medium	79697	LED7.5G25/827/10YV/RP2	2	Frosted	11,000	650	86.6	2700	82	10.0	\$0.84	☑️ 2,5,8
				79698	LED7.5G25/850/10YV/RP2	2	Frosted	11,000	650	86.6	5000	83	10.0	\$0.84	☑️ 2,5,8

<sup>1</sup>Life in years based on 3 hours per day

<sup>2</sup>Cost per year based on 3 hours per day, \$0.11 per kWh



VINTAGE G25



VINTAGE ST

**Decorative LED Lamps (cont.)****LED G25 Vintage Lamp (120V, Dimmable)**

Replaces 40W G25 Incandescent lamps

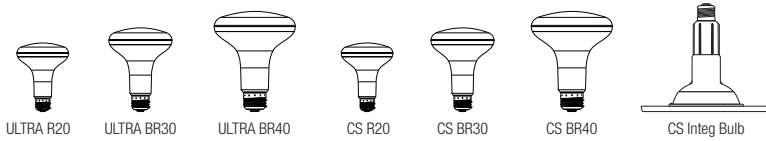
Nominal Wattage	Bulb Shape	MOL (in)	Base	Product Number	Ordering Abbreviation	Pkg Qty	Finish	Rated Life L <sub>70</sub> (hrs)	Initial Lumens	LPW	CCT (K)	CRI	Life in Years <sup>1</sup>	Cost per Year <sup>2</sup>	Notes
4.5	G25	4.45	Medium	79586	LED4.5G25/DIM/822/VIN/G2/RP	1	Amber	15,000	380	84	2200	80	13.7	\$0.54	☑️ 2,4,5

**LED ST19 Vintage Lamps (120V, Dimmable & Non-Dimmable)**

Replaces 40W &amp; 60W A19 Incandescent lamps

Nominal Wattage	Bulb Shape	MOL (in)	Base	Product Number	Ordering Abbreviation	Pkg Qty	Finish	Rated Life L <sub>70</sub> (hrs)	Initial Lumens	LPW	CCT (K)	CRI	Life in Years <sup>1</sup>	Cost per Year <sup>2</sup>	Notes
4	ST19	5.43	Medium	74330	LED4ST19/822/VIN	1	Amber	15,000	380	95	2200	80	13.7	\$0.48	☑️ 2,5,8
6	ST19	5.43	Medium	74332	LED6ST19/822/VIN	1	Amber	15,000	650	108	2200	80	13.7	\$0.72	☑️ 2,5,8
4.5	ST19	5.43	Medium	75351	LED4.5ST19/DIM/822/VIN/RP	1	Amber	15,000	380	84	2200	80	13.7	\$0.48	☑️ 2,4,5
6	ST19	5.43	Medium	75353	LED6ST19/DIM/822/VIN/RP	1	Amber	15,000	650	108	2200	80	13.7	\$0.72	☑️ 2,4,5

<sup>1</sup>Life in years based on 3 hours per day<sup>2</sup>Cost per year based on 3 hours per day, \$0.11 per kWh



## Reflector LED Lamps

### ULTRA LED™ HO R20, BR30, BR40 Lamps (120V, Dimmable)

Replaces 50W R20, 65W BR30 and 85W & 120W BR40 Incandescent lamps

Nominal Wattage	Bulb Shape	MOL (in)	Base	Product Number	Ordering Abbreviation	Pkg Qty	Finish	Rated Life L <sub>70</sub> (hrs)	Initial Lumens	LPW	CCT (K)	CRI	Life in Years <sup>1</sup>	Cost per Year <sup>2</sup>	Notes
6	R20	3.68	Medium	78062	LED6R20/DIM/HO/827/G5	6	Frosted	25,000	525	88	2700	80	22.8	\$0.72	UL★2,4,5,6
				78061	LED6R20/DIM/HO/850/G5/RP	6	Frosted	25,000	550	92	5000	80	22.8	\$0.72	UL★2,4,5,6
9	BR30	4.98	Medium	78055	LED9BR30/DIM/HO/827/G5	6	Frosted	25,000	800	89	2700	80	22.8	\$1.08	UL★2,4,5,6
9	BR30	4.96	Medium	78679	LED9BR30/DIM/HO/850/G5/RP	6	Frosted	25,000	800	92	5000	80	22.8	\$1.44	UL★2,4,5,6
12	BR40	6.38	Medium	78063	LED12BR40/DIM/HO/827/G5	6	Frosted	25,000	1100	92	2700	80	22.8	\$1.44	UL★2,4,5,6
				78773	LED12BR40/DIM/HO/850/G5/RP	6	Frosted	25,000	1250	104	5000	80	22.8	\$1.44	UL★2,4,5,6

### ULTRA LED R20 & BR30 Lamps (120V, Dimmable)

Replaces 45W R20 & 65W BR30 Incandescent lamps

Nominal Wattage	Bulb Shape	MOL (in)	Base	Product Number	Ordering Abbreviation	Pkg Qty	Finish	Rated Life L <sub>70</sub> (hrs)	Initial Lumens	LPW	CCT (K)	CRI	Life in Years <sup>1</sup>	Cost per Year <sup>2</sup>	Notes
4.5	R20	3.74	Medium	74477	LED4.5R20/DIM/827/G3/RP	6	Frosted	25,000	325	72	2700	80	22.8	\$0.54	UL★2,4,5,6
8	BR30	5.00	Medium	74475	LED8BR30/DIM/827/G3/RP	6	Frosted	25,000	650	81	2700	80	22.8	\$0.96	UL★2,4,5,6

### ULTRA LED Premium Dimmable R20, BR30, BR40 Lamps (120V, CCT Dimming)

Replaces 50W R20, 65W BR30 & 85W BR40 Incandescent lamps

Nominal Wattage	Bulb Shape	MOL (in)	Base	Product Number	Ordering Abbreviation	Pkg Qty	Finish	Rated Life L <sub>70</sub> (hrs)	Initial Lumens	LPW	CCT (K)	CRI	Life in Years <sup>1</sup>	Cost per Year <sup>2</sup>	Notes
6.5	R20	3.74	Medium	79618	LED6.5R20/DIM/SE/830/G5/RP	6	Frosted	25,000	525	81	3000	80	22.8	\$0.78	UL★2,4,5,6
10	BR30	4.92	Medium	79619	LED10/BR30/DIM/SE/830/G5/RP	6	Frosted	25,000	800	81	3000	80	22.8	\$1.20	UL★2,4,5,6
13	BR40	6.06	Medium	79620	LED13BR40/DIM/SE/830/G5/RP	6	Frosted	25,000	1100	85	3000	80	22.8	\$1.57	UL★2,4,5,6

### Contractor Series LED R20, BR30, BR40 Lamps (120V, Dimmable)

Replaces 35W R20, 65W BR30 & 85W BR40 Incandescent lamps

Nominal Wattage	Bulb Shape	MOL (in)	Base	Product Number	Ordering Abbreviation	Pkg Qty	Finish	Rated Life L <sub>70</sub> (hrs)	Initial Lumens	LPW	CCT (K)	CRI	Life in Years <sup>1</sup>	Cost per Year <sup>2</sup>	Notes
5	R20	3.74	Medium	73993	LED5R20/DIM/827/10YV/RP2	12	Frosted	11,000	325	65	2700	80	10	\$0.60	UL2,4,5,6
				73991	LED5R20/DIM/850/10YV/RP2	12	Frosted	11,000	325	65	5000	80	10	\$0.60	UL2,4,5,6
9	BR30	5.00	Medium	73954	LED9BR30/DIM/827/10YV/RP2	12	Frosted	11,000	650	72	2700	80	10	\$1.08	UL2,4,5,6
				73956	LED9BR30/DIM/850/10YV/RP2	12	Frosted	11,000	650	72	5000	80	10	\$1.08	UL2,4,5,6
13	BR40	4.80	Medium	79498	LED13/BR40/DIM/827/10YV/RP2	12	Frosted	11,000	900	69	2700	80	10	\$1.56	UL2,4,5,6
				79624	LED13/BR40/DIM/850/10YV/RP2	12	Frosted	11,000	1050	81	5000	80	10	\$1.56	UL2,4,5,6

### Contractor Series LED Integrated Bulb and Trim (120V, Dimmable)

Replaces 50W R20 and 65W BR30 Incandescent Lamps

Nominal Wattage	Bulb Shape	MOL (in)	Base	Product Number	Ordering Abbreviation	Pkg Qty	Finish	Rated Life L <sub>70</sub> (hrs)	Initial Lumens	LPW	CCT (K)	CRI	Life in Years <sup>1</sup>	Cost per Year <sup>2</sup>	Notes
9	R20	5.24	Medium	79686	LED9LT4/DIM/SK/827/G1/RP2	6	Frosted	11,000	500	56	2700	80	10	\$1.08	UL2,4,5,6
15	BR30	6.26	Medium	79695	LED15LT6/DIM/SK/827/RP	6	Frosted	11,000	800	56	2700	80	10	\$1.08	UL2,4,5,6

<sup>1</sup>Life in years based on 3 hours per day

<sup>2</sup>Cost per year based on 3 hours per day, \$0.11 per kWh



ULTRA PAR16



CS PAR16



RENAISSANCE PAR20



ULTRA Glass PAR20



CS PAR20

## Directional LED Lamps

### ULTRA LED™ PAR16 Glass Lamps (120V, Dimmable)

Replaces 50W Halogen PAR16

Nominal Wattage	MOL (in)	Base	Product Number	Ordering Abbreviation	Pkg Qty	Rated Life L <sub>70</sub> (hrs)	Beam Angle	CBCP (cd)	Initial Lumens	LPW	CCT (K)	CRI	Life in Years <sup>1</sup>	Cost per Year <sup>2</sup>	Notes
6	2.41	Medium	79287	LED6PAR16/DIM/830/FL36/GL1/RP	1	25,000	36°	1000	450	75	3000	82	22.8	0.72	☑️★,2,4,5,6
6	2.41	GU10	79288	LED6PAR16/GU10/DIM/830/FL36/GL1/RP	1	25,000	36°	1000	450	75	3000	82	22.8	\$0.72	☑️★,2,4,5,6

### Contractor Series LED PAR16 Lamp (120V, Dimmable)

Replaces 35W Halogen PAR16

Nominal Wattage	MOL (in)	Base	Product Number	Ordering Abbreviation	Pkg Qty	Rated Life L <sub>70</sub> (hrs)	Beam Angle	CBCP (cd)	Initial Lumens	LPW	CCT (K)	CRI	Life in Years <sup>1</sup>	Cost per Year <sup>2</sup>	Notes
4	2.41	GU10	78560	LED4PAR16/GU10/DIM/830/FL35/10YV/RP	3	11,000	35°	650	350	88	3000	81	10	\$0.48	1,2,4,5,6

### RENAISSANCE™ LED PAR20 Lamps (120V, Dimmable) 90+ CRI

Replaces 50W Halogen PAR20

Nominal Wattage	MOL (in)	Base	Product Number	Ordering Abbreviation	Pkg Qty	Rated Life L <sub>70</sub> (hrs)	Beam Angle	CBCP (cd)	Initial Lumens	LPW	CCT (K)	CRI	Life in Years <sup>1</sup>	Cost per Year <sup>2</sup>	Notes
8	3.46	Medium	78363	LED8PAR20/HD/DIM/927/NFL25	1	25,000	25°	1300	500	63	2700	91	22.8	\$0.96	☑️★,2,4,5,6
			78366	LED8PAR20/HD/DIM/927/FL40	1	25,000	40°	1100	500	63	2700	91	22.8	\$0.96	☑️★,2,4,5,6
			78364	LED8PAR20/HD/DIM/930/NFL25	1	25,000	25°	1400	500	69	3000	91	22.8	\$0.96	☑️★,2,4,5,6
			78367	LED8PAR20/HD/DIM/930/FL40	1	25,000	40°	1200	550	69	3000	91	22.8	\$0.96	☑️★,2,4,5,6
			78365	LED8PAR20/HD/DIM/935/NFL25	1	25,000	25°	1400	600	75	3500	91	22.8	\$0.96	☑️★,2,4,5,6
			78368	LED8PAR20/HD/DIM/935/FL40	1	25,000	40°	1200	600	75	3500	91	22.8	\$0.96	☑️★,2,4,5,6

### ULTRA LED Glass PAR20 Lamps (120V, Dimmable)

Replaces 50W Halogen PAR20

Nominal Wattage	MOL (in)	Base	Product Number	Ordering Abbreviation	Pkg Qty	Rated Life L <sub>70</sub> (hrs)	Beam Angle	CBCP (cd)	Initial Lumens	LPW	CCT (K)	CRI	Life in Years <sup>1</sup>	Cost per Year <sup>2</sup>	Notes
8	3.39	Medium	78982	LED8PAR20/DIM/827/NFL25/GL1	1	25,000	25°	1700	500	63	2700	81	22.8	\$0.96	☑️★,2,4,5,6,17
			78983	LED8PAR20/DIM/827/FL40/GL1	1	25,000	40°	950	500	63	2700	81	22.8	\$0.96	☑️★,2,4,5,6,17
			78980	LED8PAR20/DIM/830/NFL25/GL1	1	25,000	25°	1700	500	63	3000	81	22.8	\$0.96	☑️★,2,4,5,6,17
			78981	LED8PAR20/DIM/830/FL40/GL1	1	25,000	40°	950	500	63	3000	81	22.8	\$0.96	☑️★,2,4,5,6,17
			78978	LED8PAR20/DIM/840/FL40/GL2	1	25,000	40°	950	500	63	4000	81	22.8	\$0.96	☑️★,2,4,5,6,17
			74053	LED8PAR20/DIM/850/FL40/GL1/RP	1	25,000	40°	950	550	69	5000	81	22.8	\$0.96	☑️★,2,4,5,6,17

### Contractor Series LED PAR20 Lamp (120V, Non-Dimmable)

Replaces 50W Halogen PAR20

Nominal Wattage	MOL (in)	Base	Product Number	Ordering Abbreviation	Pkg Qty	Rated Life L <sub>70</sub> (hrs)	Beam Angle	CBCP (cd)	Initial Lumens	LPW	CCT (K)	CRI	Life in Years <sup>1</sup>	Cost per Year <sup>2</sup>	Notes
6	3.33	Medium	79279	LED6PAR20/830/FL45/10YV/RP2	2	11,000	45°	525	425	71	3000	82	10	\$0.72	☑️,2,5,6,8

<sup>1</sup>Life in years based on 3 hours per day<sup>2</sup>Cost per year based on 3 hours per day, \$0.11 per kWh





RENAISSANCE PAR30



ULTRA Glass PAR30



RENAISSANCE PAR30LN



ULTRA HO PAR30LN



ULTRA Glass PAR30LN

**Directional LED Lamps (cont.)****RENAISSANCE™ LED PAR30 Lamps (120V, Dimmable) 90+ CRI** Replaces 75W Halogen PAR30

Nominal Wattage	MOL (in)	Base	Product Number	Ordering Abbreviation	Pkg Qty	Rated Life L <sub>70</sub> (hrs)	Beam Angle	CBCP (cd)	Initial Lumens	LPW	CCT (K)	CRI	Life in Years <sup>1</sup>	Cost per Year <sup>2</sup>	Notes
12.5	3.62	Medium	79570	LED12.5PAR30/HD/DIM/927/NFL25	1	25,000	25°	4500	900	72	2700	91	22.8	\$1.51	VI★2,4,5,6
			79573	LED12.5PAR30/HD/DIM/927/FL40	1	25,000	40°	1800	900	72	2700	91	22.8	\$1.51	VI★2,4,5,6
			79571	LED12.5PAR30/HD/DIM/930/NFL25	1	25,000	25°	4650	1000	80	3000	91	22.8	\$1.51	VI★2,4,5,6
			79574	LED12.5PAR30/HD/DIM/930/FL40	1	25,000	40°	1900	1000	80	3000	91	22.8	\$1.51	VI★2,4,5,6
			79572	LED12.5PAR30/HD/DIM/935/NFL25	1	25,000	25°	4650	1050	84	3500	91	22.8	\$1.51	VI★2,4,5,6
			79575	LED12.5PAR30/HD/DIM/935/FL40	1	25,000	40°	1900	1050	84	3500	91	22.8	\$1.51	VI★2,4,5,6

**ULTRA LED™ Glass PAR30 Lamps (120V, Dimmable)** Replaces 75W Halogen PAR30

Nominal Wattage	MOL (in)	Base	Product Number	Ordering Abbreviation	Pkg Qty	Rated Life L <sub>70</sub> (hrs)	Beam Angle	CBCP (cd)	Initial Lumens	LPW	CCT (K)	CRI	Life in Years <sup>1</sup>	Cost per Year <sup>2</sup>	Notes
13	3.32	Medium	79373	LED13PAR30/DIM/830/NFL25/GL1	1	25,000	25°	3200	825	63	3000	82	22.8	\$1.57	VI★2,4,5,6,17
			79372	LED13PAR30/DIM/830/FL40/GL1/RP	1	25,000	40°	1500	825	63	3000	82	22.8	\$1.57	VI★2,4,5,6,17

**RENAISSANCE LED PAR30LN Lamps (120V, Dimmable) 90+ CRI** Replaces 75W Halogen PAR30LN

Nominal Wattage	MOL (in)	Base	Product Number	Ordering Abbreviation	Pkg Qty	Rated Life L <sub>70</sub> (hrs)	Beam Angle	CBCP (cd)	Initial Lumens	LPW	CCT (K)	CRI	Life in Years <sup>1</sup>	Cost per Year <sup>2</sup>	Notes
12.5	4.49	Medium	79564	LED12.5PAR30LN/HD/DIM/927/NFL25	1	25,000	25°	4500	900	72	2700	91	22.8	\$1.51	VI★2,4,5,6
			79567	LED12.5PAR30LN/HD/DIM/927/FL40	1	25,000	40°	1800	900	72	2700	91	22.8	\$1.51	VI★2,4,5,6
			79565	LED12.5PAR30LN/HD/DIM/930/NFL25	1	25,000	25°	4650	1000	80	3000	91	22.8	\$1.51	VI★2,4,5,6
			79568	LED12.5PAR30LN/HD/DIM/930/FL40	1	25,000	40°	1900	1000	80	3000	91	22.8	\$1.51	VI★2,4,5,6
			79566	LED12.5PAR30LN/HD/DIM/935/NFL25	1	25,000	25°	4650	1050	84	3500	91	22.8	\$1.51	VI★2,4,5,6
			79569	LED12.5PAR30LN/HD/DIM/935/FL40	1	25,000	40°	1900	1050	84	3500	91	22.8	\$1.51	VI★2,4,5,6

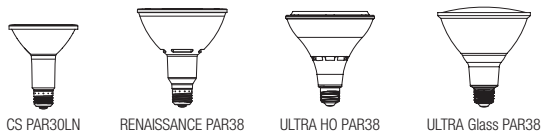
**ULTRA LED HO PAR30LN Lamps (120V, Dimmable & 120/277V, Non-Dimmable)** Replaces 75W Halogen PAR30LN

Nominal Wattage	MOL (in)	Base	Product Number	Ordering Abbreviation	Pkg Qty	Rated Life L <sub>70</sub> (hrs)	Beam Angle	CBCP (cd)	Initial Lumens	LPW	CCT (K)	CRI	Life in Years <sup>1</sup>	Cost per Year <sup>2</sup>	Notes
19	4.49	Medium	79361	LED19PAR30LN/HO/DIM/830/SP15/W/120	1	25,000	15°	17,600	1800	95	3000	81	22.8	\$2.20	VI★2,4,5,6
			79362	LED19PAR30LN/HO/830/SP15/W/UNV	1	25,000	15°	17,600	1800	95	3000	81	22.8	\$2.20	VI★2,5,6,8
25	4.69	Medium	79693	LED25PAR30LN/HO/830/NFL25/W/UNV	1	25,000	25°	10,000	2300	92	3000	82	22.8	\$3.01	VI★2,5,6,8

**ULTRA LED Glass PAR30LN Lamps (120V, Dimmable)** Replaces 75W Halogen PAR30LN

Nominal Wattage	MOL (in)	Base	Product Number	Ordering Abbreviation	Pkg Qty	Rated Life L <sub>70</sub> (hrs)	Beam Angle	CBCP (cd)	Initial Lumens	LPW	CCT (K)	CRI	Life in Years <sup>1</sup>	Cost per Year <sup>2</sup>	Notes
13	4.49	Medium	78230	LED13PAR30LN/DIM/827/FL40/GL1	1	25,000	40°	1500	825	63	2700	82	22.8	\$1.57	VI★2,4,5,6,17
			78229	LED13PAR30LN/DIM/827/NFL25/GL1	1	25,000	25°	3200	825	63	2700	82	22.8	\$1.57	VI★2,4,5,6,17
			78228	LED13PAR30LN/DIM/830/FL40/GL1	1	25,000	40°	1500	825	63	3000	82	22.8	\$1.57	VI★2,4,5,6,17
			78227	LED13PAR30LN/DIM/830/NFL25/GL1	1	25,000	25°	3200	825	63	3000	82	22.8	\$1.57	VI★2,4,5,6,17
			78224	LED13PAR30LN/DIM/840/FL40/GL2	1	25,000	40°	1500	825	63	4000	82	22.8	\$1.56	VI★2,4,5,6,17
			74059	LED13PAR30LN/DIM/850/FL40/GL1/RP	1	25,000	40°	1500	900	69	5000	82	22.8	\$1.50	VI★2,4,5,6,17

<sup>1</sup>Life in years based on 3 hours per day<sup>2</sup>Cost per year based on 3 hours per day, \$0.11 per kWh



CS PAR30LN      RENAISSANCE PAR38      ULTRA HO PAR38      ULTRA Glass PAR38

## Directional LED Lamps (cont.)

### Contractor Series LED PAR30LN Lamp (120V, Non-Dimmable) Replaces 65W Halogen PAR30LN

Nominal Wattage	MOL (in)	Base	Product Number	Ordering Abbreviation	Pkg Qty	Rated Life L <sub>70</sub> (hrs)	Beam Angle	CBCP (cd)	Initial Lumens	LPW	CCT (K)	CRI	Life in Years <sup>1</sup>	Cost per Year <sup>2</sup>	Notes
9	4.47	E26 Medium	79280	LED9PAR30LN/830/FL45/10YV/RP2	1	11,000	45°	900	800	72	3000	82	10	\$1.08	UCI★2,5,6,8

### RENAISSANCE™ LED PAR38 Lamps (120V, Dimmable) 90+ CRI Replaces 90W & 120W Halogen PAR38

Nominal Wattage	MOL (in)	Base	Product Number	Ordering Abbreviation	Pkg Qty	Rated Life L <sub>70</sub> (hrs)	Beam Angle	CBCP (cd)	Initial Lumens	LPW	CCT (K)	CRI	Life in Years <sup>1</sup>	Cost per Year <sup>2</sup>	Notes
13	5.20	Medium	78351	LED13PAR38/HD/DIM/930/SP15	1	25,000	15°	9000	1000	77	3000	91	22.8	\$1.56	UCI★2,4,5,6
			78362	LED13PAR38/HD/DIM/930/NFL25	1	25,000	25°	4000	1000	77	3000	91	22.8	\$1.56	UCI★2,4,5,6
			78361	LED13PAR38/HD/DIM/930/FL40	1	25,000	40°	1800	1000	77	3000	91	22.8	\$1.56	UCI★2,4,5,6
16.5	5.20	Medium	78352	LED16.5PAR38/HD/DIM/927/SP15	1	25,000	15°	12500	1250	76	2700	91	22.8	\$1.98	UCI★2,4,5,6
			78353	LED16.5PAR38/HD/DIM/927/NFL25	1	25,000	25°	5600	1250	76	2700	91	22.8	\$1.98	UCI★2,4,5,6
			78354	LED16.5PAR38/HD/DIM/927/FL40	1	25,000	40°	2300	1250	76	2700	91	22.8	\$1.98	UCI★2,4,5,6
			78355	LED16.5PAR38/HD/DIM/930/SP15	1	25,000	15°	13000	1350	82	3000	91	22.8	\$1.98	UCI★2,4,5,6
			78356	LED16.5PAR38/HD/DIM/930/NFL25	1	25,000	25°	5800	1350	82	3000	91	22.8	\$1.98	UCI★2,4,5,6
			78357	LED16.5PAR38/HD/DIM/930/FL40	1	25,000	40°	2350	1350	82	3000	91	22.8	\$1.98	UCI★2,4,5,6
			78358	LED16.5PAR38/HD/DIM/935/SP15	1	25,000	15°	13000	1350	82	3500	91	22.8	\$1.98	UCI★2,4,5,6
			78359	LED16.5PAR38/HD/DIM/935/NFL25	1	25,000	25°	5800	1350	82	3500	91	22.8	\$1.98	UCI★2,4,5,6
			78360	LED16.5PAR38/HD/DIM/935/FL40	1	25,000	40°	2350	1350	82	3500	91	22.8	\$1.98	UCI★2,4,5,6

### ULTRA LED™ HO PAR38 Lamps (120V, Dimmable & 120/277V, Non-Dimmable) 15° Replaces 150W Halogen; 25° and 40° replace 250W Halogen

Nominal Wattage	MOL (in)	Base	Product Number	Ordering Abbreviation	Pkg Qty	Rated Life L <sub>70</sub> (hrs)	Beam Angle	CBCP (cd)	Initial Lumens	LPW	CCT (K)	CRI	Life in Years <sup>1</sup>	Cost per Year <sup>2</sup>	Notes
26	5.09	Medium	79364	LED26PAR38/HO/830/SP15/W/UNV	1	25,000	15°	20,000	2400	92	3000	81	22.8	\$3.13	WV★2,5,6,7,8,17
			79363	LED26PAR38/HO/DIM/830/SP15/W/120	1	25,000	15°	20,000	2400	92	3000	81	22.8	\$3.13	WV★2,4,5,6,7,17
			74085	LED26PAR38/HO/DIM/830/FL40/W	1	25,000	40°	4500	2400	92	3000	82	22.8	\$3.13	WV★2,4,5,6,7,17
			79479	LED26PAR38/HO/DIM/850/FL40/W/RP	1	25,000	40°	4500	2400	92	5000	82	22.8	\$3.10	WV★2,4,5,6,7,17
30	5.12	Medium	79600	LED30PAR38/HO/830/NFL25/W/UNV	1	25,000	25°	14,000	3000	100	3000	82	22.8	\$3.61	WV★2,5,6,7,8,17

### ULTRA LED Glass PAR38 Lamps (120V, Dimmable) 14W Replaces 90W Halogen PAR38; 17W Replaces 120W Halogen PAR38

Nominal Wattage	MOL (in)	Base	Product Number	Ordering Abbreviation	Pkg Qty	Rated Life L <sub>70</sub> (hrs)	Beam Angle	CBCP (cd)	Initial Lumens	LPW	CCT (K)	CRI	Life in Years <sup>1</sup>	Cost per Year <sup>2</sup>	Notes
14	5.09	Medium	74035	LED14PAR38/DIM/827/NFL25/GL1	1	25,000	25°	5500	1050	75	2700	82	22.8	\$1.68	WV★2,4,5,6,17
			74037	LED14PAR38/DIM/827/FL40/GL1	1	25,000	40°	2000	1050	75	2700	82	22.8	\$1.68	WV★2,4,5,6,17
			74036	LED14PAR38/DIM/830/SP12/GL1	1	25,000	12°	14000	1050	75	3000	82	22.8	\$1.68	WV★2,4,5,6,17
			74032	LED14PAR38/DIM/830/NFL25/GL1	1	25,000	25°	5500	1050	75	3000	82	22.8	\$1.68	WV★2,4,5,6,17
			74034	LED14PAR38/DIM/830/FL40/GL1	1	25,000	40°	2000	1050	75	3000	82	22.8	\$1.68	WV★2,4,5,6,17
			74088	LED14PAR38/DIM/840/FL40/GL1	1	25,000	40°	2000	1050	75	4000	82	22.8	\$1.68	WV★2,4,5,6,17
			74064	LED14PAR38/DIM/850/FL40/GL1/RP	1	25,000	40°	2000	1050	75	5000	82	22.8	\$1.60	WV★2,4,5,6,17
17	5.09	Medium	74070	LED17PAR38/DIM/830/FL40/GL1/RP	1	25,000	40°	2500	1300	76	3000	82	22.8	\$2.00	WV★2,4,5,6,17
			74052	LED17PAR38/DIM/830/NFL25/GL1	1	25,000	25°	6500	1300	76	3000	82	22.8	\$2.04	UCI★2,4,5,17
			74068	LED17PAR38/DIM/850/FL40/GL1/RP	1	25,000	40°	2500	1300	76	5000	82	22.8	\$2.00	WV★2,4,5,6,17

<sup>1</sup>Life in years based on 3 hours per day

<sup>2</sup>Cost per year based on 3 hours per day, \$0.11 per kWh



CS PAR38



ULTRA GLASS MR16



ULTRA MR16



CS MR16

**Directional LED Lamps (cont.)****Contractor Series LED PAR38 Lamps (120V, Non-Dimmable)**

Replaces 90W Halogen PAR38

Nominal Wattage	MOL (in)	Base	Product Number	Ordering Abbreviation	Pkg Qty	Rated Life L <sub>70</sub> (hrs)	Beam Angle	CBCP (cd)	Initial Lumens	LPW	CCT (K)	CRI	Life in Years <sup>1</sup>	Cost per Year <sup>2</sup>	Notes
13	5.06	Medium	79736	LED13PAR38/850/FL45/10YV/RP2	2	11,000	45°	1250	1200	92	5000	82	10	\$1.57	☑️2,5,6,8
			79333	LED13PAR38/830/FL45/10YV/RP2/DIS	2	11,000	45°	1250	1050	69	3000	80	10	\$1.57	☑️2,5,6,8
			79276	LED13PAR38/830/FL45/10YV/RP2	2	11,000	45°	1250	1050	69	3000	80	10	\$1.56	☑️2,5,6,8

**ULTRA LED™ MR16 Glass Lamps (12V, Dimmable)**

Replaces 20W &amp; 35W Halogen MR16 Lamps

Nominal Wattage	MOL (in)	Base	Product Number	Ordering Abbreviation	Pkg Qty	Rated Life L <sub>70</sub> (hrs)	Beam Angle	CBCP (cd)	Initial Lumens	LPW	CCT (K)	CRI	Life in Years <sup>1</sup>	Cost per Year <sup>2</sup>	Notes
5	1.73	GU5.3 Bipin	78232	LED5MR16/DIM/827/NFL25/GL/RP	1	25,000	25°	975	350	70	2700	81	22.8	\$0.60	☑️★2,4,5,9,15,17
			78231	LED5MR16/DIM/827/FL35/GL/RP	1	25,000	35°	650	350	70	2700	81	22.8	\$0.60	☑️★2,4,5,9,15,17
			78234	LED5MR16/DIM/830/NFL25/GL/RP	1	25,000	25°	975	350	70	3000	82	22.8	\$0.60	☑️★2,4,5,9,15,17
			78233	LED5MR16/DIM/830/FL35/GL/RP	1	25,000	35°	650	350	70	3000	82	22.8	\$0.60	☑️★2,4,5,9,15,17
6	1.73	GU5.3 Bipin	78240	LED6MR16/DIM/830/NFL25/GL/RP	1	25,000	25°	2000	450	75	3000	83	22.8	\$0.72	☑️★2,4,5,9,15,17
			78239	LED6MR16/DIM/830/FL35/GL/RP	1	25,000	35°	1000	450	75	3000	82	22.8	\$0.72	☑️★2,4,5,9,15,17
			78235	LED6MR16/DIM/930/FL35/GL/RP	1	25,000	35°	1000	425	70	3000	93	22.8	\$0.72	☑️★2,4,5,9,15,17

**ULTRA LED MR16 Lamps (12V, Dimmable)**

Replaces 50W Halogen MR16 Lamps

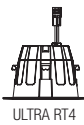
Nominal Wattage	MOL (in)	Base	Product Number	Ordering Abbreviation	Pkg Qty	Rated Life L <sub>70</sub> (hrs)	Beam Angle	CBCP (cd)	Initial Lumens	LPW	CCT (K)	CRI	Life in Years <sup>1</sup>	Cost per Year <sup>2</sup>	Notes
9	1.89	GU5.3 Bipin	78200	LED9MR16/DIM/827/FL35	1	25,000	35°	1500	700	78	2700	80	22.8	\$1.08	☑️★2,4,5,9,10,15,17
			78199	LED9MR16/DIM/827/NFL25	1	25,000	25°	2600	700	78	2700	80	22.8	\$1.08	☑️★2,4,5,9,10,15,17
			74044	LED9MR16/DIM/830/NFL25	1	25,000	25°	2600	700	78	3000	80	22.8	\$1.08	☑️★2,4,5,9,10,15,17
			74042	LED9MR16/DIM/830/FL35	1	25,000	35°	1500	700	78	3000	80	22.8	\$1.08	☑️★2,4,5,9,10,15,17

**Contractor Series LED MR16 Lamp (12V, Non-Dimmable)**

Replaces 35W Halogen MR16 Lamps

Nominal Wattage	MOL (in)	Base	Product Number	Ordering Abbreviation	Pkg Qty	Rated Life L <sub>70</sub> (hrs)	Beam Angle	CBCP (cd)	Initial Lumens	LPW	CCT (K)	CRI	Life in Years <sup>1</sup>	Cost per Year <sup>2</sup>	Notes
5	1.79	GU5.3 Bipin	79129	LED5MR16/830/FL35/10YV/BL	3	11,000	35°	650	350	70	3000	81	10	\$0.60	1,2,5,6,8,9,10,15

<sup>1</sup>Life in years based on 3 hours per day<sup>2</sup>Cost per year based on 3 hours per day, \$0.11 per kWh



ULTRA RT4



CS RT4



ULTRA RT5/6

## Downlight LED Retrofits

### ULTRA LED™ RT4 (120V, Dimmable)

Retrofit for standard four inch insulated ceiling, airtight and non-IC Incandescent downlight housings

Nominal Wattage	Replacement Wattage	MOL (in)	Base	Product Number	Ordering Abbreviation	Pkg Qty	Rated Life L70 (hrs)	Beam Angle	Initial Lumens	LPW	CCT (K)	CRI	Notes
9	50	3.15	Med Adaptor	73835	LED/RT4/600/840	2	50,000	80°	600	67	4000	82	☒★2,4,5
				73836	LED/RT4/600/850	2	50,000	80°	600	67	5000	82	☒★2,4,5
				74285	LED/RT4/600/927/FL80	2	50,000	80°	600	67	2700	90	☒★2,4,5
				74286	LED/RT4/600/930/FL80	2	50,000	80°	600	67	3000	90	☒★2,4,5
				74287	LED/RT4/600/930/FL80/RP	2	50,000	80°	600	67	3000	90	☒★2,4,5
9	50	3.57	Med Adaptor	74288	LED/RT4/600/940	2	50,000	80°	600	67	4000	90	☒★2,4,5
				74289	LED/RT4/600/950	2	50,000	80°	600	67	5000	90	☒★2,4,5

### ULTRA LED RT4 Gimbal (30° Tilt, 120V, Dimmable)

Retrofit for standard four inch insulated ceiling, airtight and non-IC Incandescent downlight housings

Nominal Wattage	Replacement Wattage	MOL (in)	Base	Product Number	Ordering Abbreviation	Pkg Qty	Rated Life L70 (hrs)	Beam Angle	Initial Lumens	LPW	CCT (K)	CRI	Notes
9	50	3.60	Med Adaptor	70387	LED/RT4/G/600/827	4	50,000	80°	600	67	2700	82	☒☒★2,4,5
				70395	LED/RT4/G/600/830	4	50,000	80°	600	67	3000	82	☒☒★2,4,5

### Contractor Series LED RT4 (120V, Dimmable)

Retrofit for standard four inch insulated ceiling, airtight and non-IC Incandescent downlight housings

Nominal Wattage	Replacement Wattage	MOL (in)	Base	Product Number	Ordering Abbreviation	Pkg Qty	Rated Life L70 (hrs)	Beam Angle	Initial Lumens	LPW	CCT (K)	CRI	Notes
8	50	3.15	Med Adaptor	70520	LED/RT4/550/827	4	11,000	80°	550	69	2700	82	☒☒3,4,5
				70521	LED/RT4/550/830	4	11,000	80°	550	69	3000	82	☒☒3,4,5
				74181	LED/RT4/550/840	4	11,000	80°	550	69	4000	82	☒☒3,4,5
				74182	LED/RT4/550/850	4	11,000	80°	550	69	5000	82	☒☒3,4,5

### ULTRA LED RT5/6 HO (120V, Dimmable)

Retrofit for standard five or six inch downlight housings with compact fluorescent pin-base lamps

Nominal Wattage	Replacement Wattage	MOL (in)	Base	Product Number	Ordering Abbreviation	Pkg Qty	Rated Life L70 (hrs)	Beam Angle	Initial Lumens	LPW	CCT (K)	CRI	Notes
9	13	3.46	Conduit Adaptor	75330	LED/RT5/6/HO/650/927	2	35,000	80°	650	72	2700	90	☒☒★2,4,6,10
				75331	LED/RT5/6/HO/650/930	2	35,000	80°	650	72	3000	90	☒☒★2,4,6,10
				75332	LED/RT5/6/HO/650/940	2	35,000	80°	650	72	4000	90	☒☒★2,4,6,10

### ULTRA LED RT5/6 HO (120-277V, Dimmable)

Retrofit for standard five or six inch downlight housings with compact fluorescent pin-base lamps

Nominal Wattage	Replacement Wattage	MOL (in)	Base	Product Number	Ordering Abbreviation	Pkg Qty	Rated Life L70 (hrs)	Beam Angle	Initial Lumens	LPW	CCT (K)	CRI	Notes
8	13	3.46	Conduit Adaptor	75228	LED/RT5/6/HO/700/827	2	50,000	80°	700	88	2700	>80	☒☒★2,4,6,10
				75229	LED/RT5/6/HO/700/830	2	50,000	80°	700	88	3000	>80	☒☒★2,4,6,10
				75230	LED/RT5/6/HO/700/835	2	50,000	80°	700	88	3500	>80	☒☒★2,4,6,10
				75231	LED/RT5/6/HO/700/840	2	50,000	80°	700	88	4000	>80	☒☒★2,4,6,10
13	13	3.46	Conduit Adaptor	75137	LED/RT5/6/HO/900/827	2	50,000	80°	900	69	2700	>80	☒☒★2,4,6,10
				75138	LED/RT5/6/HO/900/830	2	50,000	80°	900	69	3000	>80	☒☒★2,4,6,10
				75140	LED/RT5/6/HO/900/835	2	50,000	80°	900	69	3500	>80	☒☒★2,4,6,10
				75139	LED/RT5/6/HO/900/840	2	50,000	80°	900	69	4000	>80	☒☒★2,4,6,10
17	26/32	4.29	Conduit Adaptor	72528	LED/RT6/1500/HO/830	4	50,000	80°	1500	88	3000	>80	☒☒★2,4,6,10
				72529	LED/RT6/1500/HO/835	4	50,000	80°	1500	88	3500	>80	☒☒★2,4,6,10
				72530	LED/RT6/1500/HO/840	4	50,000	80°	1500	88	4000	>80	☒☒★2,4,6,10



## Downlight LED Retrofits (cont.)

### ULTRA LED™ RT5/6 HO (347V, Non-Dimmable)

Retrofit for standard five or six inch downlights with compact fluorescent pin-base lamps

Nominal Wattage	Replacement Wattage	MOL (in)	Base	Product Number	Ordering Abbreviation	Pkg Qty	Rated Life L <sub>70</sub> (hrs)	Beam Angle	Initial Lumens	LPW	CCT (K)	CRI	Notes
13	18	4.43	Conduit Adaptor	75327	LED/RT5/6/HO/900/840/347V	2	50,000	80°	900	69	4000	>80	☒★ <sub>2,5,6,8,10</sub>
17	26/32	4.29	Conduit Adaptor	75328	LED/RT5/6/HO/1500/840/347V	4	50,000	80°	1500	88	4000	>80	☒★ <sub>2,5,6,8,10</sub>

### ULTRA LED RT5/6 (120V, Dimmable)

Retrofit for standard five or six inch insulated ceiling, airtight and non-IC Incandescent downlight housings

Nominal Wattage	Replacement Wattage	MOL (in)	Base	Product Number	Ordering Abbreviation	Pkg Qty	Rated Life L <sub>70</sub> (hrs)	Beam Angle	Initial Lumens	LPW	CCT (K)	CRI	Notes
10	65	4.43	Med Adaptor	74290	LED/RT5/6/700/927/FL80	2	50,000	80°	700	70	2700	90	☒★ <sub>3,4,5</sub>
				74291	LED/RT5/6/700/930/FL80	2	50,000	80°	700	70	3000	90	☒★ <sub>3,4,5</sub>
				71730	LED/RT5/6/700/930/RP	2	50,000	80°	700	70	3000	90	☒★ <sub>3,4,5</sub>
				74292	LED/RT5/6/700/940/FL80	2	50,000	80°	700	70	4000	90	☒★ <sub>3,4,5</sub>
				74293	LED/RT5/6/700/950/FL80	2	50,000	80°	700	70	5000	90	☒★ <sub>3,4,5</sub>
13	75	4.43	Med Adaptor	74294	LED/RT5/6/900/927/FL80	2	50,000	80°	900	69	2700	90	☒★ <sub>3,4,5</sub>
				74295	LED/RT5/6/900/930/FL80	2	50,000	80°	900	69	3000	90	☒★ <sub>3,4,5</sub>
				74296	LED/RT5/6/900/930/RP	2	50,000	80°	900	69	3000	90	☒★ <sub>3,4,5</sub>
				74297	LED/RT5/6/900/950/RP	2	50,000	80°	900	69	5000	90	☒★ <sub>3,4,5</sub>
16	100	4.43	Med Adaptor	79750	LED/RT5/6/1200/927	2	50,000	80°	1200	75	2700	90	☒★ <sub>3,4,5</sub>
				79751	LED/RT5/6/1200/930	2	50,000	80°	1200	75	3000	90	☒★ <sub>3,4,5</sub>
				79752	LED/RT5/6/1200/930/RP	2	50,000	80°	1200	75	3000	90	☒★ <sub>3,4,5</sub>
				79753	LED/RT5/6/1200/940	2	50,000	80°	1200	75	4000	90	☒★ <sub>3,4,5</sub>

### ULTRA LED RT5/6 Gimbal (30° Tilt, 120V, Dimmable)

Retrofit for standard five or six inch insulated ceiling, airtight and non-IC Incandescent downlight housings

Nominal Wattage	Replacement Wattage	MOL (in)	Base	Product Number	Ordering Abbreviation	Pkg Qty	Rated Life L <sub>70</sub> (hrs)	Beam Angle	Initial Lumens	LPW	CCT (K)	CRI	Notes
13	75	3.45	Med Adaptor	73466	LED/RT5/6/G/900/827/FL80/RP	4	50,000	80°	900	69	2700	84	☒☒★ <sub>3,4,5</sub>
				73467	LED/RT5/6/G/900/830	4	50,000	80°	900	69	3000	84	☒☒★ <sub>3,4,5</sub>
13	75	4.24	Med Adaptor	73464	LED/RT5/6/G/900/830/FL80/RP	2	50,000	80°	900	69	3000	84	☒☒★ <sub>3,4,5</sub>
				72369	LED/RT6/G/900/830/FL80/RP	2	50,000	80°	900	69	3000	84	☒☒★ <sub>3,4,5</sub>

### ULTRA LED Premium Dimmable RT5/6 (120V, Dimmable, Warm CCT dimming)

Retrofit for standard five or six inch insulated ceiling, airtight and non-IC Incandescent downlight housings

Nominal Wattage	Replacement Wattage	MOL (in)	Base	Product Number	Ordering Abbreviation	Pkg Qty	Rated Life L <sub>70</sub> (hrs)	Beam Angle	Initial Lumens	LPW	CCT (K)	CRI	Notes
10	65	4.43	Medium	73497	LED/RT5/6/700/SE/830	6	50,000	80°	700	70	3000	83	★ <sub>2,4,5</sub>

### Contractor Series LED RT5/6 (120V, Dimmable)

Retrofit for standard five or six inch insulated ceiling, airtight and non-IC Incandescent downlight housings

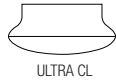
Nominal Wattage	Replacement Wattage	MOL (in)	Base	Product Number	Ordering Abbreviation	Pkg Qty	Rated Life L <sub>70</sub> (hrs)	Beam Angle	Initial Lumens	LPW	CCT (K)	CRI	Notes
9	65	4.43	Med Adaptor	74401	LED/RT/5/6/625/830/RP	4	11,000	80°	625	69	3000	80	☒ <sub>3,4,5</sub>
				74402	LED/RT/5/6/625/840/RP	4	11,000	80°	625	69	4000	80	☒ <sub>3,4,5</sub>
				74403	LED/RT/5/6/625/850/RP	4	11,000	80°	625	69	5000	80	☒ <sub>3,4,5</sub>
10	65	4.43	Med Adaptor	74404	LED/RT/5/6/625/827	4	11,000	80°	625	63	2700	82	☒ <sub>3,4,5</sub>
				74405	LED/RT/5/6/625/830	4	11,000	80°	625	63	3000	82	☒ <sub>3,4,5</sub>
				74406	LED/RT/5/6/625/840	4	11,000	80°	625	63	4000	82	☒ <sub>3,4,5</sub>
				74407	LED/RT/5/6/625/850	4	11000	80°	625	63	5000	82	☒ <sub>3,4,5</sub>



ULTRA RT8



ULTRA Light Disk



ULTRA CL

## Downlight LED Retrofits (cont.)

### ULTRA LED™ RT8 (120-277V, Low Voltage Dimmable)

Retrofit for standard eight inch downlight housings with compact fluorescent pin-base lamps

Nominal Wattage	Replacement Wattage	MOL (in)	Base	Product Number	Ordering Abbreviation	Pkg Qty	Rated Life L <sub>70</sub> (hrs)	Beam Angle	Initial Lumens	LPW	CCT (K)	CRI	Notes
24	2x26, 1x42	5.31	Conduit Adaptor	74466	LED/RT8/2000/830	4	50,000	80°	2000	83	3000	80	☒★2,4,5,6,10
				74467	LED/RT8/2000/835	4	50,000	80°	2000	83	3500	80	☒★2,4,5,6,10
				74468	LED/RT8/2000/840	4	50,000	80°	2000	83	4000	80	☒★2,4,5,6,10
40	2x26	5.31	Conduit Adaptor	72625	LED/RT8/3000/930	4	50,000	80°	3000	75	3000	90	☒★2,4,5,6,10
				72626	LED/RT8/3000/935	4	50,000	80°	3000	75	3500	90	☒★2,4,5,6,10
				72628	LED/RT8/3000/940	4	50,000	80°	3000	75	4000	90	☒★2,4,5,6,10
55	2x42	5.51	Conduit Adaptor	79740	LED/RT8/5000/830	4	50,000	80°	5000	91	3000	82	☒★2,4,5,6,10
				79741	LED/RT8/5000/835	4	50,000	80°	5000	91	3500	82	☒★2,4,5,6,10
				79742	LED/RT8/5000/840	4	50,000	80°	5000	91	4000	82	☒★2,4,5,6,10
92	150W HPS	5.51	Conduit Adaptor	79754	LED/RT8/8000/830	2	50,000	80°	8000	87	3000	82	☒★2,4,5,6,10
				79755	LED/RT8/8000/835	2	50,000	80°	8000	87	3500	82	☒★2,4,5,6,10
				79756	LED/RT8/8000/840	2	50,000	80°	8000	87	4000	82	☒★2,4,5,6,10

### ULTRA LED RT8 (347V, Non-Dimmable)

Retrofit for standard eight inch downlight housings with compact fluorescent pin-base lamps

Nominal Wattage	Replacement Wattage	MOL (in)	Base	Product Number	Ordering Abbreviation	Pkg Qty	Rated Life L <sub>70</sub> (hrs)	Beam Angle	Initial Lumens	LPW	CCT (K)	CRI	Notes
23	2X26, 1X42	5.31	Conduit Adaptor	75397	LED/RT8/2000/830/347V	4	50,000	80°	2000	87	3000	82	☒★2,5,6,8,10
				75398	LED/RT8/2000/840/347V	4	50,000	80°	2000	87	4000	82	☒★2,5,6,8,10
				75399	LED/RT8/2000/850/347V	4	50,000	80°	2000	87	5000	82	☒★2,5,6,8,10

### ULTRA LED Light Disk (120V, Dimmable)

Recessed and surface mount downlight retrofit kit

Nominal Wattage	Replacement Wattage	MOL (in)	Base	Product Number	Ordering Abbreviation	Pkg Qty	Rated Life L <sub>70</sub> (hrs)	Beam Angle	Initial Lumens	LPW	CCT (K)	CRI	Notes
13	100	1.44	Medium	75044	LED/LD/900/930/FL120	2	50,000	120°	900	69	3000	90	☒★2,4,5,7
				75045	LED/LD/900/930/FL120/RP	2	50,000	120°	900	69	3000	90	☒★2,4,5,7
13	120	1.44	Medium	75046	LED/LD/1100/950/FL120	2	50,000	120°	1100	85	5000	90	☒★2,4,5,7

### ULTRA LED CL Lamp (120V, Non-Dimmable)

Medium base retrofit for ceiling fixtures

Nominal Wattage	Replacement Wattage	MOL (in)	Base	Product Number	Ordering Abbreviation	Pkg Qty	Rated Life L <sub>70</sub> (hrs)	Beam Angle	Initial Lumens	LPW	CCT (K)	CRI	Notes
10	60	3.26	Medium	75080	LED/700/CL/827/RP	2	50,000	80°	700	70	2700	82	☒★2,5,8
				75081	LED/700/CL/840/RP	2	50,000	80°	700	70	4000	82	☒★2,5,8
15	100	3.33	Medium	75112	LED/1200/CL/827/RP	2	50,000	80°	1200	80	2700	82	☒★2,5,8
				75113	LED/1200/CL/840/RP	2	50,000	80°	1200	80	4000	82	☒★2,5,8
31	150	3.93	Medium	75123	LED/2500/CL/827/RP	2	50,000	80°	2500	81	2700	82	☒★2,5,8
				75124	LED/2500/CL/840/RP	2	50,000	80°	2500	81	4000	82	☒★2,5,8

<sup>1</sup>Life in years based on 3 hours per day

<sup>2</sup>Cost per year based on 3 hours per day, \$0.11 per kWh

## Downlight LED Retrofits (cont.)

### Accessories for RT4

Product Number	Ordering Abbreviation	Description	Pkg Qty
70696	RT4/TRIM/BLK	Black trim and reflector	4
70697	RT4/TRIM/ORBZ	Bronze trim and reflector	4
70698	RT4/TRIM/SN	Satin nickel trim and reflector	4
70716	RT4/TRIM/ALZAK	Alzak trim and reflector	4
75109	RT4/TRIM/DKBZ	Dark Bronze trim and reflector	4
75105	LED/ADAPTOR/GU24	GU24 socket adaptor	100
75107	LED/ADAPTOR/PUSHWIRE	Push wire adaptor	100

### Accessories for RT5/6

Product Number	Ordering Abbreviation	Description	Pkg Qty
75097	RT56TRIMBLK	Black trim and reflector for RT5/6	4
75098	RT56TRIMORBZ	Bronze trim and reflector for RT5/6	4
75099	RT56TRIMSN	Satin nickel trim and reflector for RT5/6	4
75095	RT5/6/TRIM/DKBZ	Dark bronze trim and reflector for RT5/6	4

### Accessories for RT6

Product Number	Ordering Abbreviation	Description	Pkg Qty
75096	LED/ADAPTOR/MEDBASE	Socket adaptor for non-gimbal version	10
75082	RT6/8/TRIMEXT	6" to 8" Trim extender	6
70663	RT6/RETROFITBAND	Retrofit bands (6" housing models Progress Lighting P87-AT and Lightolier 11041C)	4

### Accessories for RT6 HO

Product Number	Ordering Abbreviation	Description	Pkg Qty
71708	LED/RT6HO/FRAME	Rough in frame	2

### Accessories for RT8

Product Number	Ordering Abbreviation	Description	Pkg Qty
75092	RT8TRIMALZAK	Alzak trim and alzak reflector for RT8	4
75093	RT8TRIMSN	Satin nickel trim and satin nickel reflector for RT8	4
75083	RT8/10/TRIMEXT	8" to 10" Trim extender	6
71709	LED/RT8/FRAME	Rough in frame	2

### Accessories for Light Disk

Product Number	Ordering Abbreviation	Description	Pkg Qty
75100	LD/TRIM/BLK	Black trim for Light Disk	4
75102	LD/TRIM/SN	Satin nickel trim for Light Disk	4
75101	LD/TRIM/DKBZ	Dark bronze trim for Light Disk	4
75105	LED/ADAPTOR/GU24	GU24 socket adaptor	100

### Accessories for LED High Lumen Lamp

Product Number	Ordering Abbreviation	Description	Pkg Qty
75055	LED/ADAPTOR/MOGULBASE	Mogul base adaptor	100



T8 IPS

## LED Tubes

### LEDlescent™ T8 Ballast Free Lamps (120-277V, Plastic, Non-Dimmable)

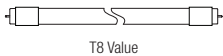
Nominal Wattage <sup>1</sup>	Bulb Shape	MOL (in)	Base	Product Number	Ordering Abbreviation	Pkg Qty	Rated Life L <sub>70</sub> (hrs)	Beam Angle	Initial Lumens <sup>1</sup>	LPW	CCT (K)	CRI	Notes
17	T8	48	G13	75024	LED17T8/L48/FG/830/BF	25	50,000	220°	2100	122	3000	82	IVQ DLE 2,5,8,11
				75025	LED17T8/L48/FG/835/BF	25	50,000	220°	2100	122	3500	82	IVQ DLE 2,5,8,11
				75026	LED17T8/L48/FG/841/BF	25	50,000	220°	2200	122	4100	82	IVQ DLE 2,5,8,11
				75027	LED17T8/L48/FG/850/BF	25	50,000	220°	2200	122	5000	82	IVQ DLE 2,5,8,11
14	T8	48	G13	75020	LED14T8/L48/FG/830/BF	25	50,000	220°	1700	128	3000	82	IVQ DLE 2,5,8,11
				75021	LED14T8/L48/FG/835/BF	25	50,000	220°	1700	128	3500	82	IVQ DLE 2,5,8,11
				75022	LED14T8/L48/FG/841/BF	25	50,000	220°	1800	128	4100	82	IVQ DLE 2,5,8,11
				75023	LED14T8/L48/FG/850/BF	25	50,000	220°	1800	128	5000	82	IVQ DLE 2,5,8,11
12	T8	48	G13	75005	LED12T8/L48/FG/830/BF	25	50,000	220°	1700	150	3000	82	IVQ DLE 2,5,8,11
				75006	LED12T8/L48/FG/835/BF	25	50,000	220°	1700	150	3500	82	IVQ DLE 2,5,8,11
				75007	LED12T8/L48/FG/841/BF	25	50,000	220°	1800	150	4100	82	IVQ DLE 2,5,8,11
				75008	LED12T8/L48/FG/850/BF	25	50,000	220°	1800	150	5000	82	IVQ DLE 2,5,8,11
12	T8	36	G13	75009	LED12T8/L36/FG/830/BF	25	50,000	220°	1650	117	3000	82	IVQ 5,8,11,14
				75010	LED12T8/L36/FG/835/BF	25	50,000	220°	1650	117	3500	82	IVQ 5,8,11,14
				75011	LED12T8/L36/FG/841/BF	25	50,000	220°	1650	117	4100	82	IVQ 5,8,11,14
				75012	LED12T8/L36/FG/850/BF	25	50,000	220°	1650	117	5000	82	IVQ 5,8,11,14
9	T8	24	G13	75013	LED9T8/L24/FG/830/BF	25	50,000	220°	1100	122	3000	82	IVQ DLE 2,5,8,11
				75014	LED9T8/L24/FG/835/BF	25	50,000	220°	1100	122	3500	82	IVQ DLE 2,5,8,11
				75015	LED9T8/L24/FG/841/BF	25	50,000	220°	1100	122	4100	82	IVQ DLE 2,5,8,11
				75016	LED9T8/L24/FG/850/BF	25	50,000	220°	1100	122	5000	82	IVQ DLE 2,5,8,11

### SubstiTUBE® IPS LED T8 Lamps (Ballast Compatible, Glass, Dimmable)

Nominal Wattage <sup>1</sup>	Bulb Shape	MOL (in)	Base	Product Number	Ordering Abbreviation	Pkg Qty	Rated Life L <sub>70</sub> (hrs)	Beam Angle	Initial Lumens <sup>1</sup>	LPW	CCT (K)	CRI	Notes
15	T8	48	G13	75339	LED15T8/L48/DIM/830/SUB/G7	25	60,000	220°	2000	117	3000	82	IVQ DLE 11,12,13,14,16,17,18
				75340	LED15T8/L48/DIM/835/SUB/G7	25	60,000	220°	2100	117	3500	82	IVQ DLE 11,12,13,14,16,17,18
				75341	LED15T8/L48/DIM/841/SUB/G7	25	60,000	220°	2200	122	4100	82	IVQ DLE 11,12,13,14,16,17,18
				75342	LED15T8/L48/DIM/850/SUB/G7	25	60,000	220°	2200	122	5000	82	IVQ DLE 11,12,13,14,16,17,18

1. Lamp Power and Lamp Lumens rated on QHE2x32T8/UNV ISN.





## LED Tubes (cont.)

### SubstiTUBE® IPS LED T8 Lamps (Ballast Compatible, Glass)

Nominal Wattage <sup>1</sup>	Bulb Shape	MOL (in)	Base	Product Number	Ordering Abbreviation	Pkg Qty	Rated Life L <sub>70</sub> (hrs)	Beam Angle	Initial Lumens <sup>1</sup>	LPW	CCT (K)	CRI	Notes
12	T8	48	G13	79526	LED12T8/L48/FG/830/SUB/G6	10	50,000	220°	1650	114	3000	82	UVI, DLC, 11,12,13,14,16,17,18
				79527	LED12T8/L48/FG/835/SUB/G6	10	50,000	220°	1650	114	3500	82	UVI, DLC, 11,12,13,14,16,17,18
				79528	LED12T8/L48/FG/841/SUB/G6	10	50,000	220°	1650	114	4100	82	UVI, DLC, 11,12,13,14,16,17,18
				79529	LED12T8/L48/FG/850/SUB/G6	10	50,000	220°	1650	114	5000	82	UVI, DLC, 11,12,13,14,16,17,18
12.5	T8	36	G13	75128	LED12T8/L36/FG/830/SUB/G6	10	50,000	220°	1575	109	3000	82	UVI, 11,12,13,14,16,17,18
				75129	LED12T8/L36/FG/835/SUB/G6	10	50,000	220°	1575	109	3500	82	UVI, 11,12,13,14,16,17,18
				75130	LED12T8/L36/FG/841/SUB/G6	10	50,000	220°	1600	110	4100	82	UVI, 11,12,13,14,16,17,18
				75131	LED12T8/L36/FG/850/SUB/G6	10	50,000	220°	1600	110	5000	82	UVI, 11,12,13,14,16,17,18
8.5	T8	24	G13	75064	LED8T8/L24/FG/830/SUB/G6	10	50,000	220°	1100	110	3000	82	UVI, 11,12,13,14,16,17,18
				75065	LED8T8/L24/FG/835/SUB/G6	10	50,000	220°	1100	110	3500	82	UVI, 11,12,13,14,16,17,18
				75066	LED8T8/L24/FG/841/SUB/G6	10	50,000	220°	1100	110	4100	82	UVI, 11,12,13,14,16,17,18
				75070	LED8T8/L24/FG/850/SUB/G6	10	50,000	220°	1100	110	5000	82	UVI, 11,12,13,14,16,17,18

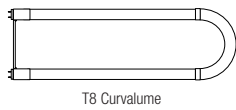
### SubstiTUBE IPS LED T8 Lamps (Ballast Compatible, Plastic)

Nominal Wattage <sup>1</sup>	Bulb Shape	MOL (in)	Base	Product Number	Ordering Abbreviation	Pkg Qty	Rated Life L <sub>70</sub> (hrs)	Beam Angle	Initial Lumens <sup>1</sup>	LPW	CCT (K)	CRI	Notes
15.5	T8	48	G13	75132	LED15T8/L48/FP/830/SUB/G6	10	50,000	150°	2100	117	3000	82	UVI, DLC, 11,12,13,14,16,17,18
				75133	LED15T8/L48/FP/835/SUB/G6	10	50,000	150°	2100	117	3500	82	UVI, DLC, 11,12,13,14,16,17,18
				75134	LED15T8/L48/FP/841/SUB/G6	10	50,000	150°	2200	122	4100	82	UVI, DLC, 11,12,13,14,16,17,18
				75135	LED15T8/L48/FP/850/SUB/G6	10	50,000	150°	2200	122	5000	82	UVI, DLC, 11,12,13,14,16,17,18

### SubstiTUBE Value LED T8 Lamps (Ballast Compatible, Glass)

Nominal Wattage <sup>1</sup>	Bulb Shape	MOL (in)	Base	Product Number	Ordering Abbreviation	Pkg Qty	Rated Life L <sub>70</sub> (hrs)	Beam Angle	Initial Lumens <sup>1</sup>	LPW	CCT (K)	CRI	Notes
17	T8	48	G13	75500	LED17T8/L48/FG/830/SUB/G7	10	36,000	220°	2100	105	3000	82	UVI, 11,12,13,14,16,18
				75501	LED17T8/L48/FG/835/SUB/G7	10	36,000	220°	2100	105	3500	82	UVI, 11,12,13,14,16,18
				75502	LED17T8/L48/FG/841/SUB/G7	10	36,000	220°	2200	110	4100	82	UVI, 11,12,13,14,16,18
				75503	LED17T8/L48/FG/850/SUB/G7	10	36,000	220°	2200	110	5000	82	UVI, 11,12,13,14,16,18

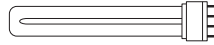
1. Lamp Power and Lamp Lumens rated on QHE2x32T8/UNV ISN.



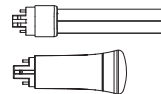
T8 Curvalume



T5 HO



TT5



Pin Based

## LED Tubes (cont.)

### SubstiTUBE® CURVALUME® IPS LED T8 Lamps (Ballast Compatible, Plastic, U-bend)

Nominal Wattage <sup>1</sup>	Bulb Shape	MOL (in)	Base	Product Number	Ordering Abbreviation	Pkg Qty	Rated Life L <sub>70</sub> (hrs)	Beam Angle	Initial Lumens <sup>1</sup>	LPW	CCT (K)	CRI	Notes
15	T8	23	G13	75492	LED15T8/U/FP/830/SUB/G6	10	50,000	220°	2100	118	3000	82	IVC, DLC 11,12,13,14,16,17,18
				75493	LED15T8/U/FP/835/SUB/G6	10	50,000	220°	2100	118	3500	82	IVC, DLC 11,12,13,14,16,17,18
				75494	LED15T8/U/FP/841/SUB/G6	10	50,000	220°	2200	125	4100	82	IVC, DLC 11,12,13,14,16,17,18
				75495	LED15T8/U/FP/850/SUB/G6	10	50,000	220°	2200	125	5000	82	IVC, DLC 11,12,13,14,16,17,18
15.5	T8	23	G13	75142	LED15T8/U/F/835/SUB/G5	10	50,000	220°	2200	118	3500	83	IVC 11,12,13,14,16

### SubstiTUBE LED T5 HO Lamps (Ballast Compatible, Glass with metal endcaps)

Nominal Wattage <sup>1</sup>	Bulb Shape	MOL (in)	Base	Product Number	Ordering Abbreviation	Pkg Qty	Rated Life L <sub>70</sub> (hrs)	Beam Angle	Initial Lumens <sup>1</sup>	LPW	CCT (K)	CRI	Notes
25	T5	46	Miniature Bipin	79746	LED25T50/L48/FG/830/SUB/G6	10	50,000	180°	3300	118	3000	82	IVC, DLC 11,13,14,16
				79747	LED25T50/L48/FG/835/SUB/G6	10	50,000	180°	3300	118	3500	82	IVC, DLC 11,13,14,16
				79748	LED25T50/L48/FG/841/SUB/G6	10	50,000	180°	3500	125	4100	82	IVC, DLC 11,13,14,16
				79749	LED25T50/L48/FG/850/SUB/G6	10	50,000	180°	3500	125	5000	82	IVC, DLC 11,13,14,16

### SubstiTUBE DULUX® L LED TT5 Lamps (Ballast Compatible, Glass)

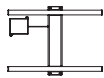
Nominal Wattage <sup>1</sup>	Bulb Shape	MOL (in)	Base	Product Number	Ordering Abbreviation	Pkg Qty	Rated Life L <sub>70</sub> (hrs)	Initial Lumens <sup>1</sup>	LPW	CCT (K)	CRI	Notes
17	TT5	22	2G11	71180	LED17TT5/DL/FG/830/SUB/G6	10	50,000	2100	100	3000	82	IVC 13,14,16,18
				71181	LED17TT5/DL/FG/835/SUB/G6	10	50,000	2100	100	3500	82	IVC 13,14,16,18
				71182	LED17TT5/DL/FG/841/SUB/G6	10	50,000	2200	105	4100	82	IVC 13,14,16,18

### SubstiTUBE DULUX LED Pin Based Lamps (Ballast Compatible, Horizontal & Vertical Positions)

Retrofit for standard compact fluorescent pin-based lamps

Nominal Wattage <sup>1</sup>	MOL (in)	Base	Product Number	Ordering Abbreviation	Pkg Qty	Rated Life L <sub>70</sub> (hrs)	Initial Lumens <sup>1</sup>	LPW	CCT (K)	CRI	Notes
9	6	GX23	75034	LED9/PB/GX23//827	24	50,000	900	105	2700	80	IVC 2,5,6,8
			75035	LED9/PB/GX23//841	24	50,000	950	122	4100	80	IVC 2,5,6,8
9	6	GX24Q-1	75036	LED9/PB/GX24Q//835	24	50,000	950	94	3500	80	IVC, DLC 2,5,6,8
			75037	LED9/PB/GX24Q//841	24	50,000	950	100	4100	80	IVC, DLC 2,5,6,8
9	4	GX24Q-1	75038	LED9/PB/GX24Q/V//835	24	50,000	950	94	3500	80	IVC, DLC 2,5,6,8
			75039	LED9/PB/GX24Q/V//841	24	50,000	950	100	4100	80	IVC, DLC 2,5,6,8

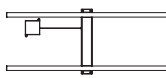
1. Lamp Power and Lamp Lumens rated on QHE2x32T8/UNV ISN.



2x2 2-Lamp



2x2 3-Lamp



2x4 2-Lamp

## Troffer Retrofit Kits

### 2X2 – 2 Lamp T8 Troffer Retrofit Kits (120-277V, Dimmable)

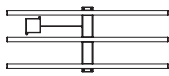
Nominal Wattage	Replaces T8	L x W (in)	Base	Product Number	Ordering Abbreviation	Pkg Qty	Rated Life L <sub>70</sub> (hrs)	Initial Lumens	LPW	CCT (K)	CRI	Notes
24	2x17W T8	14 x 20	Hard wired	75460	LEDR/TROFF/2L/024/UNV/D/830/22/WH	1	≥50,000	3000	125	3000	82	<a href="#">DLC</a> 1,2,4,5
				75461	LEDR/TROFF/2L/024/UNV/D/835/22/WH	1	≥50,000	3000	125	3500	82	<a href="#">DLC</a> 1,2,4,5
				75462	LEDR/TROFF/2L/024/UNV/D/840/22/WH	1	≥50,000	3000	125	4000	82	<a href="#">DLC</a> 1,2,4,5
				75463	LEDR/TROFF/2L/024/UNV/D/850/22/WH	1	≥50,000	3000	125	5000	82	<a href="#">DLC</a> 1,2,4,5
27	2x17W T8	14 x 20	Hard wired	75276	LEDR/TROFF/2L/027/UNV/D/830/22/WH	1	≥50,000	3000	111	3000	82	<a href="#">DLC</a> 1,2,4,5
				75277	LEDR/TROFF/2L/027/UNV/D/835/22/WH	1	≥50,000	3000	111	3500	82	<a href="#">DLC</a> 1,2,4,5
				75278	LEDR/TROFF/2L/027/UNV/D/840/22/WH	1	≥50,000	3000	111	4000	82	<a href="#">DLC</a> 1,2,4,5
				75279	LEDR/TROFF/2L/027/UNV/D/850/22/WH	1	≥50,000	3000	111	5000	82	<a href="#">DLC</a> 1,2,4,5

### 2X2 – 3 Lamp T8 Troffer Retrofit Kits (120-277V, Dimmable)

Nominal Wattage	Replaces T8	L x W (in)	Base	Product Number	Ordering Abbreviation	Pkg Qty	Rated Life L <sub>70</sub> (hrs)	Initial Lumens	LPW	CCT (K)	CRI	Notes
26	3x17W T8	14 x 20	Hard wired	75431	LEDR/TROFF/3L/026/UNV/D/830/22/WH	1	≥50,000	3200	123	3000	82	<a href="#">DLC</a> 1,2,4,5
				75432	LEDR/TROFF/3L/026/UNV/D/835/22/WH	1	≥50,000	3200	123	3500	82	<a href="#">DLC</a> 1,2,4,5
				75433	LEDR/TROFF/3L/026/UNV/D/840/22/WH	1	≥50,000	3200	123	4000	82	<a href="#">DLC</a> 1,2,4,5
				75434	LEDR/TROFF/3L/026/UNV/D/850/22/WH	1	≥50,000	3200	123	5000	82	<a href="#">DLC</a> 1,2,4,5
29	3x17W T8	14 x 20	Hard wired	75056	LEDR/TROFF/3L/029/UNV/D/830/22/WH	1	≥50,000	3200	110	3000	82	<a href="#">DLC</a> 1,2,4,5
				75057	LEDR/TROFF/3L/029/UNV/D/835/22/WH	1	≥50,000	3200	110	3500	82	<a href="#">DLC</a> 1,2,4,5
				75058	LEDR/TROFF/3L/029/UNV/D/840/22/WH	1	≥50,000	3200	110	4000	82	<a href="#">DLC</a> 1,2,4,5
				75059	LEDR/TROFF/3L/029/UNV/D/850/22/WH	1	≥50,000	3200	110	5000	82	<a href="#">DLC</a> 1,2,4,5

### 2X4 – 2 Lamp T8 Troffer Retrofit Kits (120-277V, Dimmable)

Nominal Wattage	Replaces T8	L x W (in)	Base	Product Number	Ordering Abbreviation	Pkg Qty	Rated Life L <sub>70</sub> (hrs)	Initial Lumens	LPW	CCT (K)	CRI	Notes
27	2x32W T8 ISL	14 x 44	Hard wired	75427	LEDR/TROFF/2L/027/UNV/D/830/24/WH	1	≥50,000	3200	119	3000	82	<a href="#">DLC</a> 1,2,4,5
				75428	LEDR/TROFF/2L/027/UNV/D/835/24/WH	1	≥50,000	3200	119	3500	82	<a href="#">DLC</a> 1,2,4,5
				75429	LEDR/TROFF/2L/027/UNV/D/840/24/WH	1	≥50,000	3200	119	4000	82	<a href="#">DLC</a> 1,2,4,5
				75430	LEDR/TROFF/2L/027/UNV/D/850/24/WH	1	≥50,000	3200	119	5000	82	<a href="#">DLC</a> 1,2,4,5
29	2x32W T8 ISL	14 x 44	Hard wired	75051	LEDR/TROFF/2L/029/UNV/D/830/24/WH	1	≥50,000	3200	110	3000	82	<a href="#">DLC</a> 1,2,4,5
				75052	LEDR/TROFF/2L/029/UNV/D/835/24/WH	1	≥50,000	3200	110	3500	82	<a href="#">DLC</a> 1,2,4,5
				75053	LEDR/TROFF/2L/029/UNV/D/840/24/WH	1	≥50,000	3200	110	4000	82	<a href="#">DLC</a> 1,2,4,5
				75054	LEDR/TROFF/2L/029/UNV/D/850/24/WH	1	≥50,000	3200	110	5000	82	<a href="#">DLC</a> 1,2,4,5



2x4 3-Lamp



ULTRA HL

## Troffer Retrofit Kits (cont.)

### 2X4 – 3 Lamp T8 Troffer Retrofit Kits (120-277V, Dimmable)

Nominal Wattage	Replaces T8	L x W (in)	Base	Product Number	Ordering Abbreviation	Pkg Qty	Rated Life L <sub>70</sub> (hrs)	Initial Lumens	LPW	CCT (K)	CRI	Notes
40	3x32W T8 ISL	14 x 44	Hard wired	75496	LEDR/TROFF/3L/040/UNV/D/830/24/WH	1	≥50,000	4800	120	3000	82	1,2,4,5
				75497	LEDR/TROFF/3L/040/UNV/D/835/24/WH	1	≥50,000	4800	120	3500	82	1,2,4,5
				75498	LEDR/TROFF/3L/040/UNV/D/840/24/WH	1	≥50,000	4800	120	4000	82	1,2,4,5
				75499	LEDR/TROFF/3L/040/UNV/D/850/24/WH	1	≥50,000	4800	120	5000	82	1,2,4,5
44	3x32W T8 ISL	14 x 44	Hard wired	75234	LEDR/TROFF/3L/044/UNV/D/830/24/WH	1	≥50,000	4850	110	3000	82	1,2,4,5
				75235	LEDR/TROFF/3L/044/UNV/D/835/24/WH	1	≥50,000	4850	110	3500	82	1,2,4,5
				75236	LEDR/TROFF/3L/044/UNV/D/840/24/WH	1	≥50,000	4850	110	4000	82	1,2,4,5
				75237	LEDR/TROFF/3L/044/UNV/D/850/24/WH	1	≥50,000	4850	110	5000	82	1,2,4,5

## High Lumen Integrated Ballast LED Lamps

### ULTRA LED™ High Lumen Lamps (120-277V, Non-Dimmable)

Nominal Wattage	Replaces HID Wattage	MOL (in)	Base	Product Number	Ordering Abbreviation	Pkg Qty	Rated Life L <sub>70</sub> (hrs)	Beam Angle	Initial Lumens	LPW	CCT (K)	CRI	Notes
15	35	6.30	Medium	74464	LED/HIDR/1500/827	4	50,000	80°	1500	100	2700	83	3,7,8
				74038	LED/HIDR/1500/830	4	50,000	80°	1500	100	3000	83	3,7,8
				74039	LED/HIDR/1500/840	4	50,000	80°	1500	100	4000	83	3,7,8
50	70	11.70	Medium	74465	LED/HIDR/5000/827	4	50,000	80°	5000	100	2700	83	3,7,8
				75156	LED/HIDR/5000/830	4	50,000	80°	5000	100	3000	83	3,7,8
				75250	LED/HIDR/5000/840	4	50,000	80°	5000	100	4000	83	3,7,8
				75157	LED/HIDR/5000/850	4	50,000	80°	5000	100	5000	83	3,7,8
80	100	13.00	Mogul	74040	LED/80/HIDR/8000/830	4	50,000	80°	8000	100	3000	83	3,7,8
				74041	LED/80/HIDR/8000/840	4	50,000	80°	8000	100	4000	83	3,7,8
135	250	10.40	Mogul	75048	LED/HIDR/15000/830	4	50,000	80°	15,000	111	3000	83	3,7,8
				75049	LED/HIDR/15000/840	4	50,000	80°	15,000	111	4000	83	3,7,8
				75050	LED/HIDR/15000/850	4	50,000	80°	15,000	111	5000	83	3,7,8



A19



BR30



RT5/6



MR16



PAR38

## Smart Wireless Adjustable System

### SMART+ LED A19 Dimmable Connected Lamps (120V, compatible with standard ZigBee® platform)

Product Description	Nominal Wattage	MOL (in)	Base	Product Number	Ordering Abbreviation	Pkg Qty	Rated Life L <sub>70</sub> (hrs)	Initial Lumens	LPW	CCT (K)	CRI	Life in Years <sup>1</sup>	Cost per Year <sup>2</sup>	Notes
On/Off/Dimming A19	9	4.33	Medium	74696	LED9A19DIM10YS+	4	11,000	800	89	2700	80	10	\$1.08	☑️2,3,5,8
Adjustable White A19	9.5	4.33	Medium	71831	LED9.5A19ADJWZBS+	4	11,000	805	85	2700-6500	80	10	\$1.14	☑️2,3,5,8
RGB Color Changing & Adjustable White	10	4.33	Medium	73693	LED10A19RGBWZBS+	4	20,000	800	80	1900-6500	80	18.2	\$1.32	☑️2,3,5,8

### SMART+ LED BR30 Dimmable Connected Lamps (120V, compatible with standard ZigBee platform)

Product Description	Nominal Wattage	MOL (in)	Base	Product Number	Ordering Abbreviation	Pkg Qty	Rated Life L <sub>70</sub> (hrs)	Beam Angle	Initial Lumens	LPW	CCT (K)	CRI	Life in Years <sup>1</sup>	Cost per Year <sup>2</sup>	Notes
On/Off/Dimming BR30	11	5.00	Medium	74581	LED11BR30DIM10YS+	4	11,000	100	800	73	2700	80	10	\$1.32	☑️2,5,8
Adjustable White BR30	9.5	5.31	Medium	73740	LED9.5BR30ADJWZBS+	4	20,000	100	810	85	2700-6500	80	18.2	\$1.14	☑️2,5,8
RGB Color Changing & and Adjustable White	11	5.31	Medium	73739	LED11BR30RGBWZBS+	4	20,000	100	800	73	1900-6500	90	18.2	\$1.32	☑️2,5,8

### SMART+ LED RT5/6 Connected Downlight Kit (120V, compatible with standard ZigBee platform)

Product Description	Nominal Wattage	MOL (in)	Base	Product Number	Ordering Abbreviation	Pkg Qty	Rated Life L <sub>70</sub> (hrs)	Beam Angle	Initial Lumens	LPW	CCT (K)	CRI	Life in Years <sup>1</sup>	Cost per Year <sup>2</sup>	Notes
Adjustable White	10	4.43	Medium	73742	LED10RT56ADJWZBS+	2	20,000	120°	810	81	2700-6500	80	18.2	\$1.45	☑️2,5,8
RGB Color Changing & Adjustable White	13.5	4.43	Medium	73741	LED13.5RT56RGBWZBS+	2	20,000	120°	820	61	1900-6500	90	18.2	\$1.45	☑️2,5,8
High Output RGB Color Changing & Adjustable White	21	4.43	Medium	74281	LED21RTHODIM56RGBWS+	2	50,000	120°	1400	67	1900-6500	90	45.7	\$2.53	☑️2,5,8

### SMART+ LED MR16 Dimmable Connected Lamp (12V, compatible with standard ZigBee platform)

Product Description	Nominal Wattage	MOL (in)	Base	Product Number	Ordering Abbreviation	Pkg Qty	Rated Life L <sub>70</sub> (hrs)	Beam Angle	Initial Lumens	LPW	CCT (K)	CRI	Life in Years <sup>1</sup>	Cost per Year <sup>2</sup>	Notes
Adjustable White	8.5	2.00	GU 5.3 Bipin	74282	LED8.5MR16TWS+	18	20,000	25°	500	59	2700-6500	80	18.2	\$1.02	☑️2,5,8,9

### SMART+ LED PAR38 Dimmable Connected Lamp (120V, compatible with standard ZigBee platform)

Product Description	Nominal Wattage	MOL (in)	Base	Product Number	Ordering Abbreviation	Pkg Qty	Rated Life L <sub>70</sub> (hrs)	Beam Angle	Initial Lumens	LPW	CCT (K)	CRI	Life in Years <sup>1</sup>	Cost per Year <sup>2</sup>	Notes
On/Off/Dimming PAR38	13	5.20	Medium	74580	LED13PAR38DIM10YS+	2	20,000	40°	1050	81	3000	80	10	\$1.57	☑️2,5,8

<sup>1</sup>Life in years based on 3 hours per day<sup>2</sup>Cost per year based on 3 hours per day, \$0.11 per kWh

## Smart Wireless Adjustable System (cont.)

### SMART+ LED Flexible RGBW Connected Strips (120V, compatible with standard ZigBee® platform)





Product Description	Nominal Wattage	Length (ft)	Product Number	Ordering Abbreviation	Pkg Qty	Rated Life L <sub>70</sub> (hrs)	CCT (K)	Notes
RGB Color Change & Adjustable White	36*	3 – 2 foot	73661	LED36FLEXRGBWZBS+	4	20,000	1900-6500	☑️2,5,8
RGB Color Change & Adjustable White	24*	1 – 16 foot	73685	LED24FLEXRGBWOUTDOORZBS+	4	20,000	1900-6500	☑️2,5,8

\*Rated per power supply

### Accessories

Product Description	Product Number	Ordering Abbreviation	Pkg Qty
SMART+ Plug	72922	LEDSMARTPLUGZBS+	4
SMART+ Dimming Switch	73743	LEDDIMSWITCHZBS+	4
SMART+ Motion and Temperature Sensor	72923	LEDMOTIONSENSORZBS+	4
SMART+ Contact and Temperature Sensor	74388	LEDCONTACTSENSORZBS+	4

## NOTES FOR LED LAMPS

Symbol	Description
	Product being discontinued once inventory depleted.
★	ENERGY STAR qualified lamp.
	Indoor/outdoor damp rated.
	Indoor/outdoor wet rated.
	DLC = DesignLights Consortium™ (DLC) qualified product (or lamps are in DLC approval process).

Footnote	Description
1	For indoor use only.
2	Operating temperature down to -4°F (-20°C).
3	Operating temperature down to -40°F (-40°C).
4	Suitable for use on compatible dimmers.
5	Not intended for use with emergency light fixtures or exit lights.
6	Use in open fixture.
7	Use in a fixture that supports the added weight of the lamp/bulb.
8	Not intended for use on dimmers.
9	Stated performance is based on 12Vdc input to the MR16 GU5.3 base LED lamp.
10	Not to be used in enclosed insulated ceilings.
11	NSF certified Food Zone (Non-contact splash zone and food zone).
12	For use on IS ballasts (use holder with internal shunt) and select programmed start ballasts (Use rapid-start non-shunted holders).
13	Not intended for use on dedicated voltage ballast.
14	Operating temperature range between -4°F (-20°C) and 122°F (50°C).
15	Use only with Class 2 power supply.
16	This device is not for use with emergency exits.
17	Approved for use in totally enclosed fixtures.
18	De-lamp is not allowed for ISH ballast. For approved ISN and ISL ballast, de-lamp is allowed for only one lamp so long as the ballast factor remains below 1.20.



Product licensee of  
trademark SYLVANIA  
in general lighting.

LEDVANCE LLC  
200 Ballardvale Street  
Wilmington, MA 01887 USA  
Phone 1-800-LIGHTBULB (1-800-544-4828)  
[www.sylvania.com](http://www.sylvania.com)

SYLVANIA and LEDVANCE are registered trademarks.  
All other trademarks are those of their respective owners.  
Specifications subject to change without notice.

© 2017 LEDVANCE LLC

 /sylvania  /sylvania

LED-Lamp Catalog 2017 9-17

