

# LGR • LMF IN-LINE FUSES AND LHR HOLDERS



## LGR Fuses

Fast-Acting • 300 VAC

Used as in-line protection for fluorescent fixtures, this fast-acting fuse is ideal for increasing the safety and reliability of lighting fixtures.



## Specifications

<b>Voltage Rating</b>	300 VAC
<b>Maximum Interrupting Rating</b>	10 kA
<b>Approvals</b>	Standard 248-14 UL Listed (File: E10480) CSA Certified (File: LR29862)

## Ordering Information

AMPERE RATINGS					
1/2	1 6/10	3	6	9	15
1	2	4	7	10	—
1 1/2	2 1/2	5	8	12	—

SERIES	AMPERAGE	CATALOG NUMBER	ORDERING NUMBER
LGR	5	LGR005	OLGR005.V

## LMF Fuses

Time-Delay • 300 VAC

Perfect for use in lighting systems, this 300 VAC time-delay fuse is designed to handle ballast transformer in-rush currents.



## Specifications

<b>Voltage Rating</b>	300 VAC
<b>Maximum Interrupting Rating</b>	10 kA
<b>Approvals</b>	Standard 248-14 UL Listed (File: E10480) CSA Certified (File: LR29862)

## Ordering Information

AMPERE RATINGS					
3/10	8/10	1 6/10	2 8/10	4	7
1/2	1	2	3	5	8
6/10	1 1/4	2 1/2	3 2/10	6 1/4	10

SERIES	AMPERAGE	CATALOG NUMBER	ORDERING NUMBER
LMF	5	LMF005	OLMF005.V

## LHR Fuse Holder

Used as in-line protection for fluorescent fixtures, the Littelfuse LGR and LMF series fuses and LHR holder offer increased safety and reliability to lighting systems.

By individually fusing fixtures, electrical problems are isolated from the rest of the circuit. The added benefits of this is the ability to quickly identify the problem fixture and reduce the repair time.



Fuse holders are rated up to 10 amperes at 300 volts and are equipped with 7" 18 AWG leads. Order part number LHR000 for two leads, and part number LHR001 for one lead; with the other terminal used for insertion of 18 AWG ballast lead.

## Specifications

<b>Voltage Rating</b>	300 VAC
<b>Ampere Rating</b>	LHR000 10 A LHR001 10 A
<b>Approvals</b>	UL Recognized CSA Certified (File: 73160)
<b>Flammability Rating</b>	UL94 V-0
<b>Example part number</b>	LHR001
<b>Ordering number</b>	0LHR001T

## Mounting Information

LHR001/LHR000 will fit keyhole punch or 0.875" knock-out hole. Anti-rotation feature is provided when used with keyhole punch.

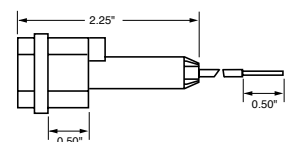
A "U-shaped" clip is available for panel mounting (packaged 10 clips per bag): Order part number LHROCA.



**Knock-out Hole**



**Keyhole Punch**



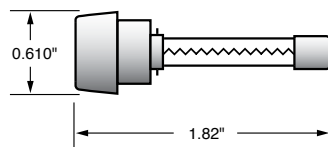
# LGR • LMF IN-LINE FUSES AND LHR HOLDERS



## LGR Fuses

Fast-Acting • 300 VAC

Used as in-line protection for fluorescent fixtures, this fast-acting fuse is ideal for increasing the safety and reliability of lighting fixtures.



## Specifications

<b>Voltage Rating</b>	300 VAC
<b>Maximum Interrupting Rating</b>	10 kA
<b>Approvals</b>	Standard 248-14 UL Listed (File: E10480) CSA Certified (File: LR29862)

## Ordering Information

AMPERE RATINGS					
1/2	1 6/10	3	6	9	15
1	2	4	7	10	—
1 1/2	2 1/2	5	8	12	—

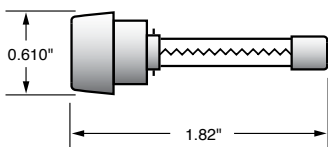
  

SERIES	AMPERAGE	CATALOG NUMBER	ORDERING NUMBER
LGR	5	LGR005	OLGR005.V

## LMF Fuses

Time-Delay • 300 VAC

Perfect for use in lighting systems, this 300 VAC time-delay fuse is designed to handle ballast transformer in-rush currents.



## Specifications

<b>Voltage Rating</b>	300 VAC
<b>Maximum Interrupting Rating</b>	10 kA
<b>Approvals</b>	Standard 248-14 UL Listed (File: E10480) CSA Certified (File: LR29862)

## Ordering Information

AMPERE RATINGS					
3/10	8/10	1 6/10	2 8/10	4	7
1/2	1	2	3	5	8
6/10	1 1/4	2 1/2	3 2/10	6 1/4	10

SERIES	AMPERAGE	CATALOG NUMBER	ORDERING NUMBER
LMF	5	LMF005	OLMF005.V

## LHR Fuse Holder

Used as in-line protection for fluorescent fixtures, the Littelfuse LGR and LMF series fuses and LHR holder offer increased safety and reliability to lighting systems.

By individually fusing fixtures, electrical problems are isolated from the rest of the circuit. The added benefits of this is the ability to quickly identify the problem fixture and reduce the repair time.



Fuse holders are rated up to 10 amperes at 300 volts and are equipped with 7" 18 AWG leads. Order part number LHR000 for two leads, and part number LHR001 for one lead; with the other terminal used for insertion of 18 AWG ballast lead.

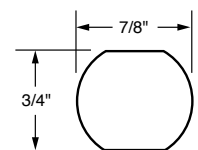
## Specifications

<b>Voltage Rating</b>	300 VAC
<b>Ampere Rating</b>	LHR000 10 A LHR001 10 A
<b>Approvals</b>	UL Recognized CSA Certified (File: 73160)
<b>Flammability Rating</b>	UL94 V-0
<b>Example part number</b>	LHR001
<b>Ordering number</b>	OLHR001T

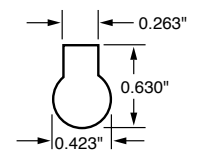
## Mounting Information

LHR001/LHR000 will fit keyhole punch or 0.875" knock-out hole. Anti-rotation feature is provided when used with keyhole punch.

A "U-shaped" clip is available for panel mounting (packaged 10 clips per bag): Order part number LHROCA.



**Knock-out Hole**



**Keyhole Punch**

