

A Arlington

Part : LT150

Description: Straight Zinc Die-Cast Connector

Listing: ULCSA

Country of Origin: USA

Weight: 0.644 lbs/each

Height: 2.507"

Width: 2.008"

Material(s): Zinc

Conduit Type: Non-Metallic Liquid Tight Conduit, Type B Only

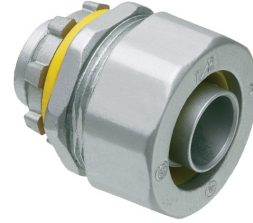
Knockout Size(s): 1-1/2"

Trade Size: 1-1/2"

Packaging

Unit: 2 pcs

Standard: 10 pcs



A Arlington

Part : LT150

Description: Straight Zinc Die-Cast Connector

Listing: ULCSA

Country of Origin: USA

Weight: 0.644 lbs/each

Height: 2.507"

Width: 2.008"

Material(s): Zinc

Conduit Type: Non-Metallic Liquid Tight Conduit, Type B Only

Knockout Size(s): 1-1/2"

Trade Size: 1-1/2"

Packaging

Unit: 2 pcs

Standard: 10 pcs

