

NEW!
more on
reverse

Rain-tight, Concrete-tight MC Cable Fittings

for PVC Jacketed MC Cable • LTMC50 Fits Cables 14/2 to 10/3



**Ideal for
Parking Decks
and High-rise
Residential**

**One LTMC50
fits 14/2 to 10/3 cable!**

Save time and money with Arlington's rain-tight, concrete-tight fittings designed especially for PVC jacketed MC cable – and Teck 90 cable.
The smallest size, 1/2" LTMC50, ships ready to install on #10, #12 or #14 PVC jacketed MC cable.



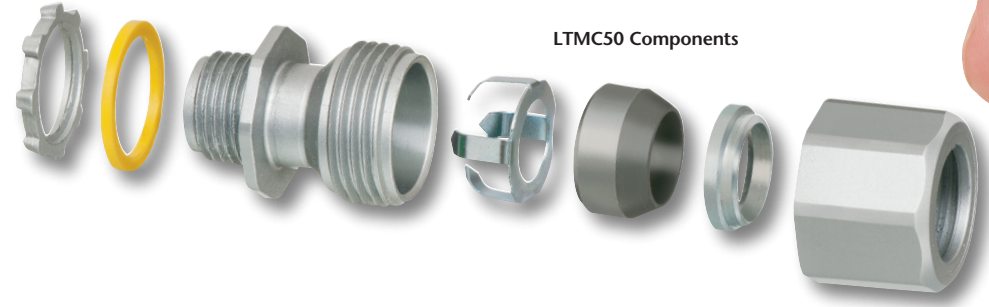
NEW DESIGN

LTMC50

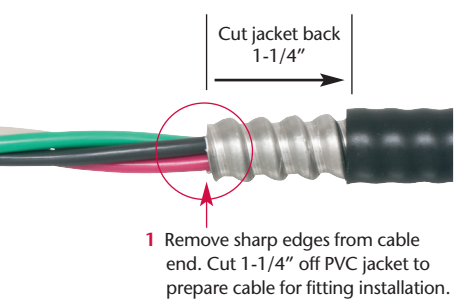
Arlington's rain-tight, concrete-tight LTMC50 connector fits a range of cable sizes, so it reduces inventory, saving the cost of stocking several different fittings.

- Heavy-duty zinc diecast construction
- c UL us Listed

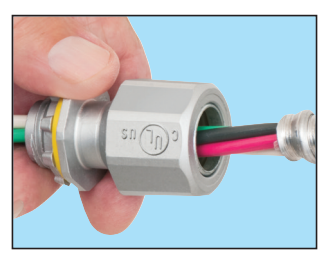
CATALOG NUMBER	UPC/DCI/NAED MFG #01 8997	DESCRIPTION	UNIT/STD PKG
LTMC50	04279	Zinc Fitting for 1/2" PVC Jacketed MC Cable	25 / 100
MC Cable Range:		.415" to .565"	
Teck Cable Range:		up to .580"	
Overall jacket OD Range:		.550" to .670"	



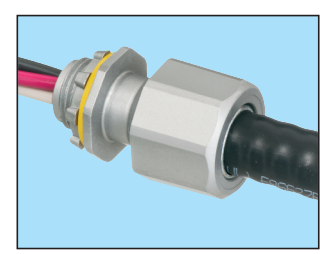
LTMC50 Components



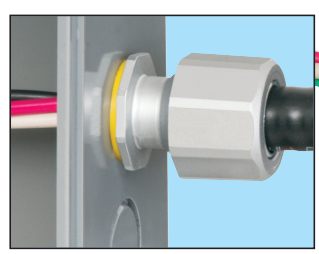
1 Remove sharp edges from cable end. Cut 1-1/4" off PVC jacket to prepare cable for fitting installation.



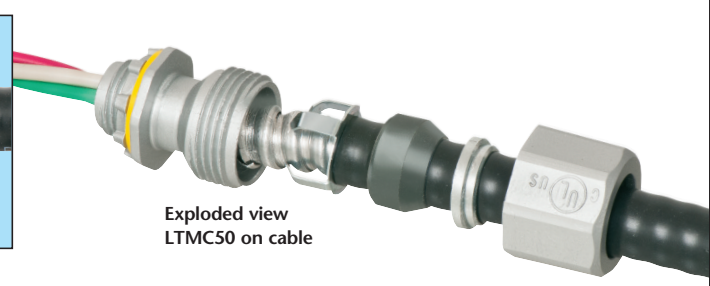
2 Push cable into fitting.



3 Cable installed. Tighten nut.



4 Install assembly in box.



Exploded view LTMC50 on cable

Patented/Other patents pending

Made in USA



Arlington®

1 Stauffer Industrial Park
Scranton, PA 18517
800/233.4717 • Fax 570/562.0646
www.aifittings.com

Rain-tight, Concrete-tight MC Cable Fittings

for PVC Jacketed MC Cable, Teck cable • Fits Widest Cable Range

Our new larger rain-tight, concrete-tight MC cable fittings cover the widest cable ranges: 1/2 to 4/3.

They're compact - and the economical solution to installing PVC jacketed MC or Teck 90 cable.

• c UL us Listed



**Ideal for Parking Decks
and High-rise Residential**



LTMC507

LTMC75

CATALOG NUMBER	UPC/DCI/NAED MFG #01 8997	DESCRIPTION	UNIT/STD PKG
LTMC507	16800	1/2" trade size	25
MC Cable Range:		.550" to .730"	
Teck 90 Range:		.580" to .765"	
MC Cable Overall jacket OD:		.670" to .830"	
Teck 90 Overall jacket OD:		.670" to .855"	

CATALOG NUMBER	UPC/DCI/NAED MFG #01 8997	DESCRIPTION	UNIT/STD PKG
LTMC75	16801	3/4" trade size	25
MC Cable Range:		.725" to .890"	
Teck 90 Range:		.765" to .980"	
MC Cable Overall jacket OD:		.830" to .990"	
Teck 90 Overall jacket OD:		.855" to 1.06"	

Patented/Other patents pending

Easy Installation!

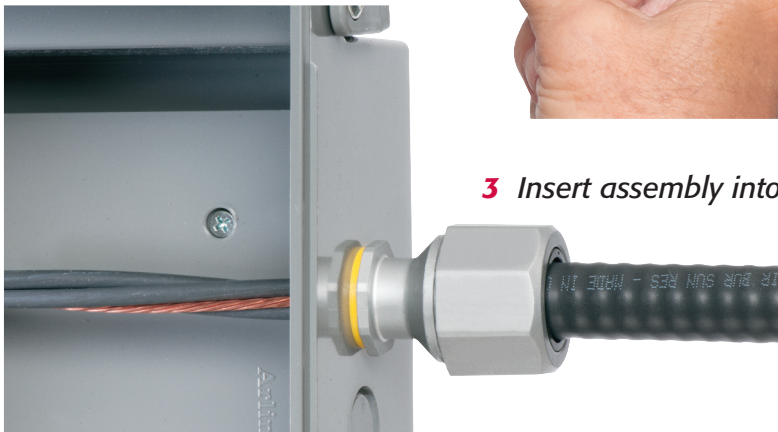
1 Cut PVC jacket back 1-1/4"



2 Push jacketed cable into fitting



3 Insert assembly into box



Arlington®

1 Stauffer Industrial Park
Scranton, PA 18517

800/233.4717 • Fax 570/562.0646

www.aifittings.com

Made in USA

Distributed by

LTMC 0715/REV 0618 25M

NEW!
more on
reverse

Rain-tight, Concrete-tight MC Cable Fittings

for PVC Jacketed MC Cable • LTMC50 Fits Cables 14/2 to 10/3



**Ideal for
Parking Decks
and High-rise
Residential**

**One LTMC50
fits 14/2 to 10/3 cable!**

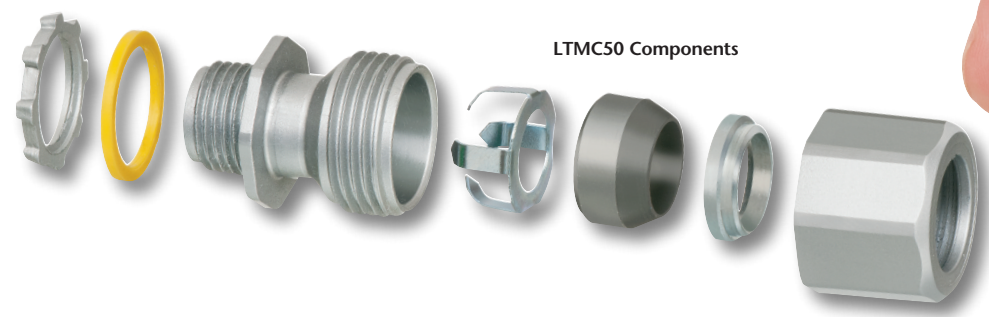
Save time and money with Arlington's rain-tight, concrete-tight fittings designed especially for PVC jacketed MC cable – and Teck 90 cable.

The smallest size, 1/2" LTMC50, ships ready to install on #10, #12 or #14 PVC jacketed MC cable.

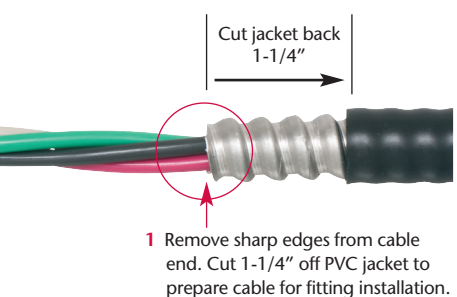
NEW DESIGN LTMC50

Arlington's rain-tight, concrete-tight LTMC50 connector fits a range of cable sizes, so it reduces inventory, saving the cost of stocking several different fittings.

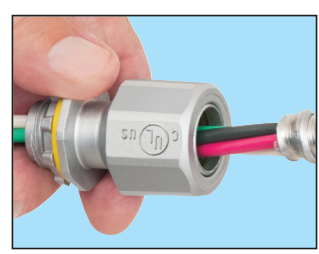
- Heavy-duty zinc diecast construction
- c UL us Listed



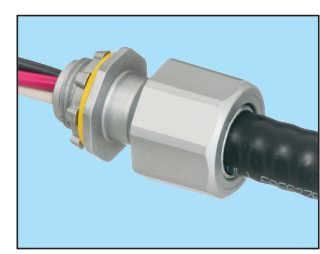
LTMC50 Components



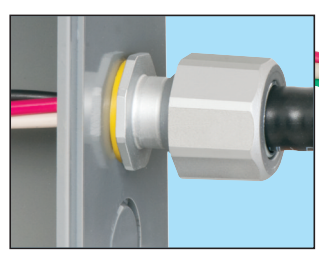
1 Remove sharp edges from cable end. Cut 1-1/4" off PVC jacket to prepare cable for fitting installation.



2 Push cable into fitting.



3 Cable installed. Tighten nut.

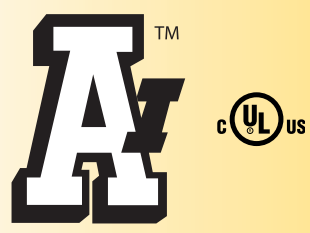


4 Install assembly in box.



Exploded view
LTMC50 on cable

CATALOG NUMBER	UPC/DCI/NAED MFG #01 8997	DESCRIPTION	UNIT/STD PKG
LTMC50	04279	Zinc Fitting for 1/2" PVC Jacketed MC Cable	25 / 100
MC Cable Range:		.415" to .565"	
Teck Cable Range:		up to .580"	
Overall jacket OD Range:		.550" to .670"	



Arlington®

1 Stauffer Industrial Park
Scranton, PA 18517
800/233.4717 • Fax 570/562.0646
www.aifittings.com

Patented/Other patents pending

Made in USA

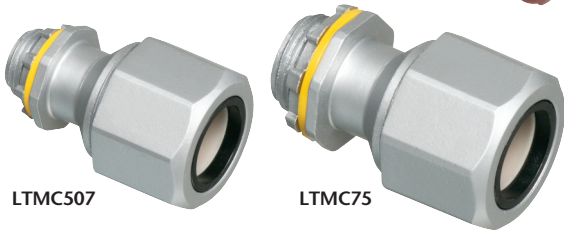
Rain-tight, Concrete-tight MC Cable Fittings

for PVC Jacketed MC Cable, Teck cable • Fits Widest Cable Range

Our new larger rain-tight, concrete-tight MC cable fittings cover the widest cable ranges: 1/2 to 4/3.

They're compact - and the economical solution to installing PVC jacketed MC or Teck 90 cable.

- c UL us Listed



LTMC507

LTMC75



Ideal for Parking Decks and High-rise Residential

CATALOG NUMBER	UPC/DCI/NAED MFG #01 8997	DESCRIPTION	UNIT/STD PKG
LTMC507	16800	1/2" trade size	25
MC Cable Range:		.550" to .730"	
Teck 90 Range:		.580" to .765"	
MC Cable Overall jacket OD:		.670" to .830"	
Teck 90 Overall jacket OD:		.670" to .855"	

CATALOG NUMBER	UPC/DCI/NAED MFG #01 8997	DESCRIPTION	UNIT/STD PKG
LTMC75	16801	3/4" trade size	25
MC Cable Range:		.725" to .890"	
Teck 90 Range:		.765" to .980"	
MC Cable Overall jacket OD:		.830" to .990"	
Teck 90 Overall jacket OD:		.855" to 1.06"	

Patented/Other patents pending



Arlington®

1 Stauffer Industrial Park
Scranton, PA 18517
800/233.4717 • Fax 570/562.0646
www.aifittings.com

Easy Installation!

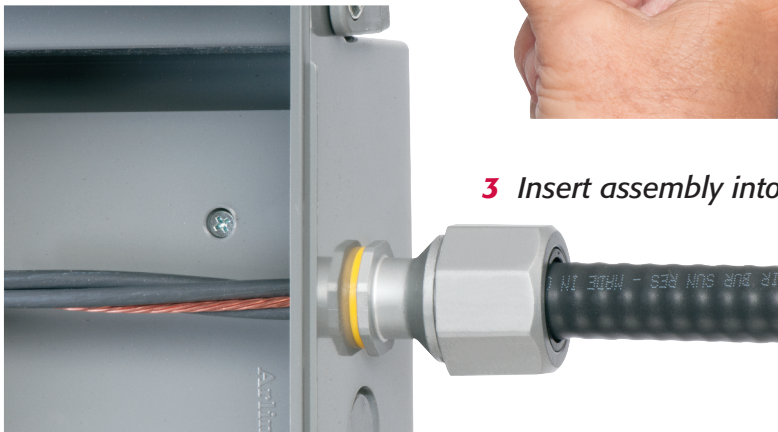
1 Cut PVC jacket back 1-1/4"



2 Push jacketed cable into fitting



3 Insert assembly into box



Distributed by

LTMC 0715/REV 0618 25M