

## Nail or Screw On Low Voltage Mounting Brackets for New Construction

Single through 4-gang brackets for the installation of LOW VOLTAGE Class 2 ONLY.

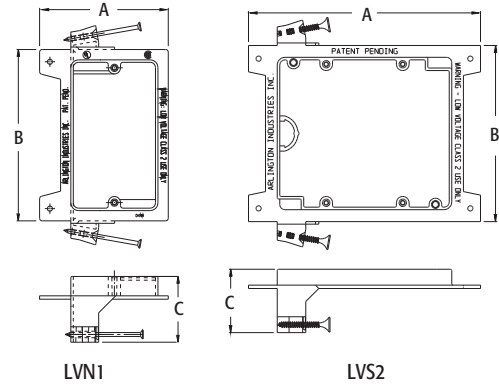
CATALOG NUMBER	UPC/DCI/NAED MFG #018997	DESCRIPTION	UNIT PKG	STD PKG	DIM A	DIM B	DIM C
LVN1	00261	Nail On Style	50	50	2.810	4.170	1.500
LVN2	00275	Nail On Style	25	25	5.492	4.170	1.500
LVN3	00277	Nail On Style	10	10	7.804	4.170	1.500
LVN4	00278	Nail On Style	10	10	9.615	1.500	
LVS1	00262	Screw On Style	50	50	2.810	4.170	1.500
LVS2	00280	Screw On Style	25	25	5.492	4.170	1.500
LVS3	00282	Screw On Style	10	10	7.804	4.170	1.500
LVS4	00283	Screw On Style	10	10	9.615	4.170	1.500

PATENTED. ADDITIONAL PATENTS PENDING.

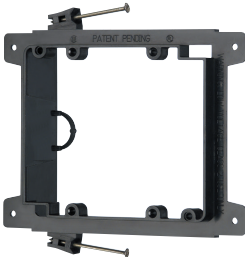


### FEATURES AND BENEFITS

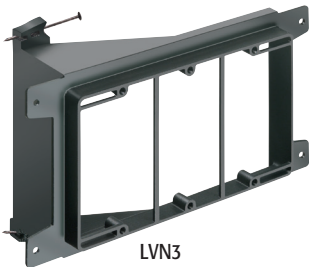
- Non-metallic
- Built-in loop to tie off cable
- Eliminates pushback
- Comes complete with nails parked in place ready to install!
- Installs in 25% less time than steel or plastic mud rings
- Nail-on ("N" styles) for wood studs
- Screw-on ("S" styles) for metal studs



LVN1



LVN2



LVN3



LVN4

**LOWER COST  
THAN STEEL  
MUD RINGS**



LVN1



LVN2



LVS1



LVS2

Scan For Video



## Nail or Screw On Low Voltage Mounting Brackets for New Construction

Single through 4-gang brackets for the installation of LOW VOLTAGE Class 2 ONLY.

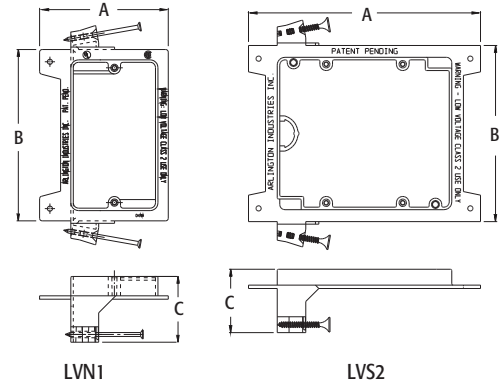
CATALOG NUMBER	UPC/DCI/NAED MFG #018997	DESCRIPTION	UNIT PKG	STD PKG	DIM A	DIM B	DIM C
LVN1	00261	Nail On Style	50	50	2.810	4.170	1.500
LVN2	00275	Nail On Style	25	25	5.492	4.170	1.500
LVN3	00277	Nail On Style	10	10	7.804	4.170	1.500
LVN4	00278	Nail On Style	10	10	9.615	1.500	
LVS1	00262	Screw On Style	50	50	2.810	4.170	1.500
LVS2	00280	Screw On Style	25	25	5.492	4.170	1.500
LVS3	00282	Screw On Style	10	10	7.804	4.170	1.500
LVS4	00283	Screw On Style	10	10	9.615	4.170	1.500

PATENTED. ADDITIONAL PATENTS PENDING.



### FEATURES AND BENEFITS

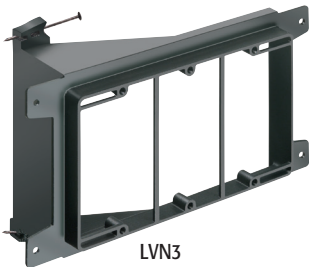
- Non-metallic
- Built-in loop to tie off cable
- Eliminates pushback
- Comes complete with nails parked in place ready to install!
- Installs in 25% less time than steel or plastic mud rings
- Nail-on ("N" styles) for wood studs
- Screw-on ("S" styles) for metal studs



LVN1



LVN2



LVN3



LVN4

**LOWER COST  
THAN STEEL  
MUD RINGS**



LVN1



LVN2



LVS1



LVS2

Scan For Video

