

Mounting Brackets for Class 2 Low Voltage Wiring

Nail or Screw on to wood or metal studs in new construction

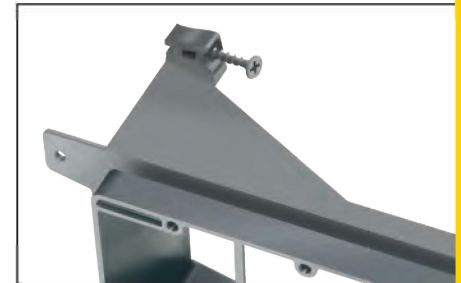
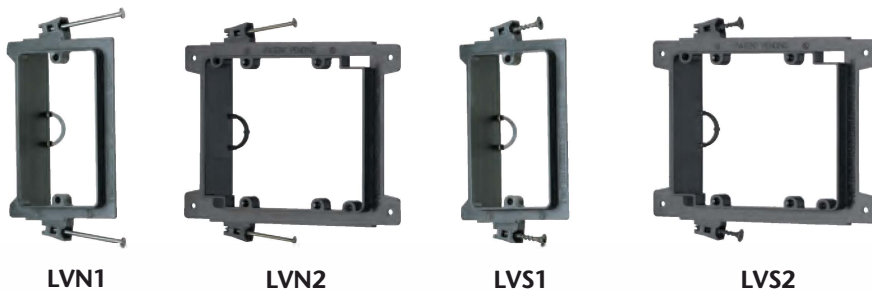


Just nail or screw these non-metallic brackets to a wood or steel stud – and you're ready to install low voltage Class 2 wiring!

- Lower cost than extension rings or mud rings
- Ready to install - nails or screws come parked-in-place
- Built-in loop for tying off cable
- Easy, secure mounting of bracket to studs with nails or screws
- Allows wall plate to mount flush with wall surface
- UL/CSA Listed

25% faster installation over steel or plastic mud rings!

Corners on the 3- and 4-gang styles are reinforced for added support against the stud.



NAIL on low voltage mounting brackets:

CATALOG NUMBER	UPC/DCI/NAED MFG #01 8997	DESCRIPTION FOR NEW CONSTRUCTION	UNIT PKG	STD PKG	HEIGHT	WIDTH	DEPTH
LVN1	00261	Single-gang	50	50	4.170	3.130	1.600
LVN2	00275	2-gang	25	25	4.170	5.492	1.500
LVN3	00277	3-gang	10	10	4.300	7.804	2.624
LVN4	00278	4-gang	10	10	4.300	9.615	2.624



LVN4



LVS3

SCREW on low voltage mounting brackets:

CATALOG NUMBER	UPC/DCI/NAED MFG #01 8997	DESCRIPTION FOR NEW CONSTRUCTION	UNIT PKG	STD PKG	HEIGHT	WIDTH	DEPTH
LVS1	00262	Single-gang	50	50	4.170	3.130	1.600
LVS2	00280	2-gang	25	25	4.170	5.492	1.500
LVS3	00282	3-gang	10	10	4.300	7.804	2.624
LVS4	00283	4-gang	10	10	4.300	9.615	2.624

Patented. Additional Patents Pending.



Arlington

Mounting Brackets for Class 2 Low Voltage Wiring

Nail or Screw on to wood or metal studs in new construction

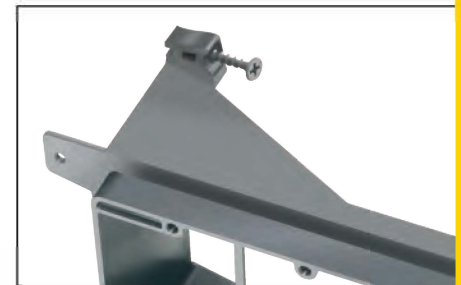
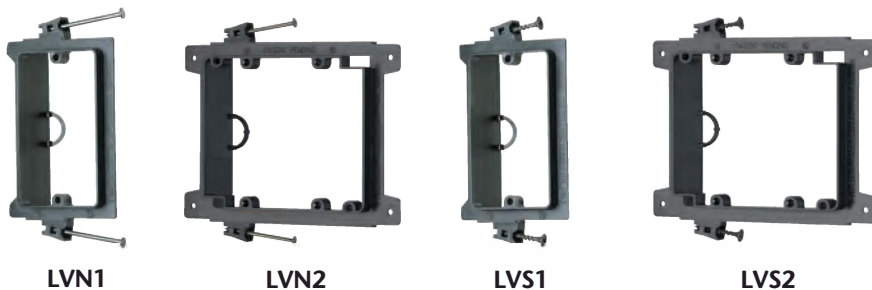


Just nail or screw these non-metallic brackets to a wood or steel stud – and you're ready to install low voltage Class 2 wiring!

- Lower cost than extension rings or mud rings
- Ready to install - nails or screws come parked-in-place
- Built-in loop for tying off cable
- Easy, secure mounting of bracket to studs with nails or screws
- Allows wall plate to mount flush with wall surface
- UL/CSA Listed

25% faster installation over steel or plastic mud rings!

Corners on the 3- and 4-gang styles are reinforced for added support against the stud.



NAIL on low voltage mounting brackets:

CATALOG NUMBER	UPC/DCI/NAED MFG #01 8997	DESCRIPTION FOR NEW CONSTRUCTION	UNIT PKG	STD PKG	HEIGHT	WIDTH	DEPTH
LVN1	00261	Single-gang	50	50	4.170	3.130	1.600
LVN2	00275	2-gang	25	25	4.170	5.492	1.500
LVN3	00277	3-gang	10	10	4.300	7.804	2.624
LVN4	00278	4-gang	10	10	4.300	9.615	2.624



SCREW on low voltage mounting brackets:

CATALOG NUMBER	UPC/DCI/NAED MFG #01 8997	DESCRIPTION FOR NEW CONSTRUCTION	UNIT PKG	STD PKG	HEIGHT	WIDTH	DEPTH
LVS1	00262	Single-gang	50	50	4.170	3.130	1.600
LVS2	00280	2-gang	25	25	4.170	5.492	1.500
LVS3	00282	3-gang	10	10	4.300	7.804	2.624
LVS4	00283	4-gang	10	10	4.300	9.615	2.624

Patented. Additional Patents Pending.

