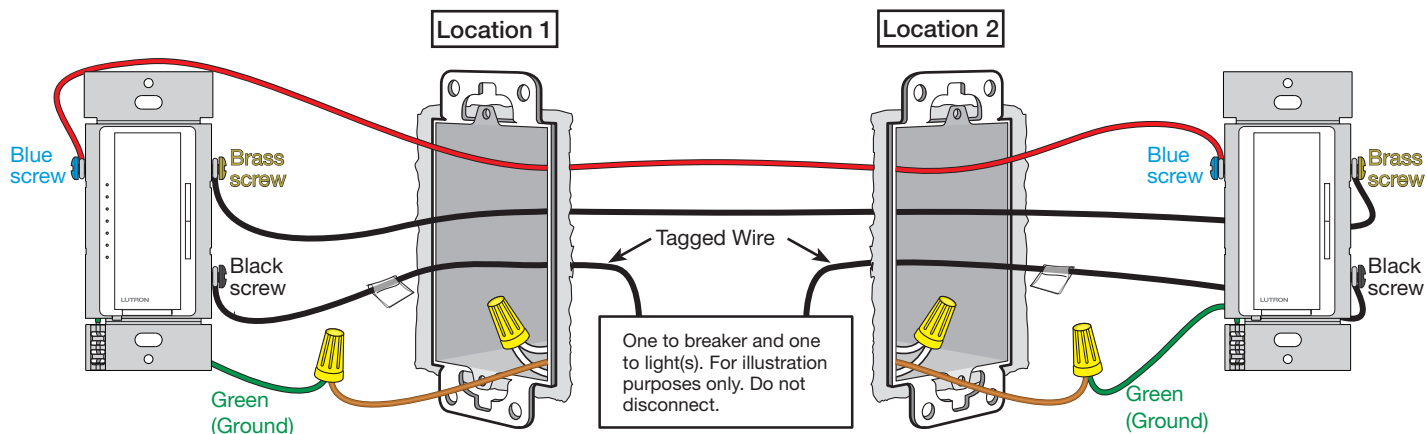


Image #9 — Dimmer with One Black Screw, One Brass Screw, and One Blue Screw in a 3-Way Application with a Companion Dimmer

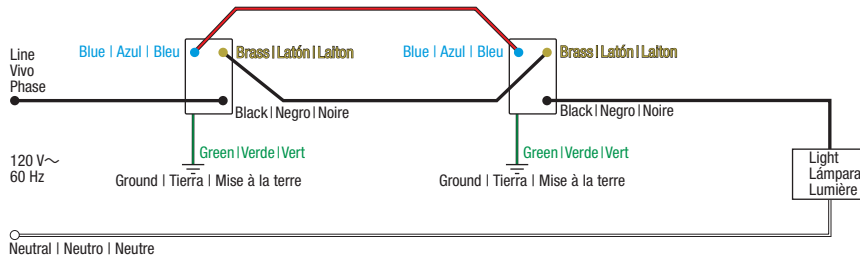


Continued on next page...

Not sure this is the correct wiring for your Lutron product?

For more information, refer to the Lutron [DIY Wiring Tool](#) or visit the [Lutron Support Center](#).

Image #9 — Dimmer with One Black Screw, One Brass Screw, and One Blue Screw in a 3-Way Application with a Companion Dimmer (continued)



Not sure this is the correct wiring for your Lutron product?

For more information, refer to the Lutron [DIY Wiring Tool](#) or visit the [Lutron Support Center](#).