

MP300

PXE™ SERIES Mobile Printer

Product Bulletin

Full-Feature Solutions and Industrial Grade Capability



PANDUIT™

EPSON

PORTABLE LABELING SOLUTION PARTNERS

PXE™ SERIES Mobile Printers

Do your job smarter, faster and easier with PXE Series Mobile Printers. This full line of advanced identification printers combine Panduit's industry-leading performance and field-tested durability with Epson's world-class printing technology.



MP300 Mobile Label Printer

Industrial grade finished marking solutions for network and electrical contractors and safety professionals.

FEATURES:

- Shared PXE Cassette Platform
- 360 dpi print resolution
- Automatic cutter with full and half cut
- Fast 1.4 in./sec. print speed
- Up to 1.5 in. wide label sizes
- Prints *die-cut* and *continuous* labels
- USB connectivity
- Prints from Easy-Mark Plus™ Software
- Magnetic attachment accessory
- Rechargeable battery pack

Easy-Mark Plus™ Software

- Common templates to easily create and print all electrical and network applications
- 11 languages included
- Available for USB flash drive, CD, web download or network server-based version
- Works with Panduit portable and desktop thermal transfer printers, Panduit embossing systems and other laser jet and ink jet printers
- A free 90 day trial version is available from www.panduit.com



PANDUIT™

EPSON

PORTABLE LABELING SOLUTION PARTNERS

Epson™ Print Technology

Epson is a global technology leader dedicated to connecting people, things and information with efficient, compact and precision technologies.

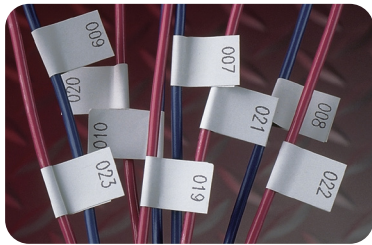
Panduit™ Labeling and Software Expertise

Panduit creates leading-edge labeling solutions for electrical and network environments, from the data center to the telecom room, the jobsite to the plant floor.

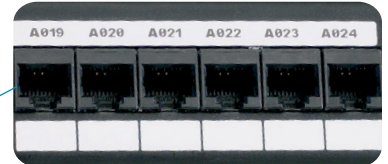
Highlights



Self-Laminating Labels



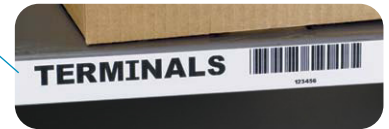
Flag Labels



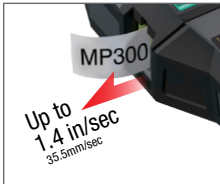
Patch Panel / Face Plate Labels



Mixed Length Labels



Continuous Tapes



High printing speed



Half cut function



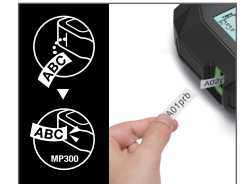
Front loading cassette



Less margin waste



Magnetic attachment



Label retention after cutting

Ordering Information

Printers and Accessories



MP300



MP300-ACS



MP300-CASE



EMPLUS

Part Number	Description
MP300	Includes MP300 printer, one (1) cassette of S100X150VAM self-laminating labels, rechargeable Li-Ion battery pack, hard carrying case, AC power adapter, USB cable, magnetic attachments and quick reference card
MP300/E	Includes MP300 printer, one (1) cassette of S100X150VAM self-laminating labels, rechargeable Li-Ion battery pack, hard carrying case, power adapter (MP300-AC), USB cable and magnetic attachments. For use outside of North America
MP300-ACS	Replacement 120-240 VAC universal power adapter module with power cord for North America for MP300 printer
MP-BATT	The MP-BATT Li-Ion Rechargeable Replacement Battery Pack is designed for use with the MP200 and MP300 mobile printers. The battery pack is RoHS Compliant. The battery is gray and comes 1 per package
MP-CASE	Replacement Hard Carrying Case designed for the MP200 and MP300 mobile printers. The case is RoHS Compliant. The case is 15.57 inches L x 11.74 inches W (395.4 mm x 298.4 mm). It is black and comes 1 per package
PTR-CLN	Printer cleaning kit — contains (1) cleaning pen, (8) cleaning solution soaked wipes, (8) foam swabs pre-saturated with cleaning solution, MSDS, and cleaning instructions

Part Number	Description
EMPLUS-CD	Easy-Mark Plus™ Labeling Software, CD-ROM
EMPLUS-DL	Easy-Mark Plus™ Labeling Software, online download
EMPLUS-2GO	Easy-Mark Plus™ Portable Application, USB flash drive
EMPLUS-SERVER	Easy-Mark Plus™ Labeling Software, networkable server based version

Easy-Mark Plus Labeling Software is sold separately, not included with PXE Printers.

Ordering Information



Die-Cut Self Laminating Label Cassettes

- Fast-loading Label Cassette includes both label material and ribbon to make changing labels easy
- Self-laminating adhesive labels for wire/cable identification include a white print-on area and clear overlamine



Self-Laminating Vinyl (VA)



-40°F to 150°F
(-40°C to 66°C)

Part Number	Description	Quantity of Labels Per Cassette	Printer Compatibility				Print-on Area Color	Width		Length		Print-on Area Height		Min. Cable O.D.		Max. Cable O.D.		Wire/Cable Size Range	Std. Pkg. Qty.	Std. Ctn. Qty.
			MP 75	MP 100	MP 200	MP 300		in.	mm	ft.	m	in.	mm	in.	mm	in.	mm			
S050X075VAM	PXE Cassette, Self-Laminating Label, Vinyl, .50" W x .75" H, .25" Print-on Area, Clear/White	425								0.75	19.1	0.25	6.4	0.08	2.0	0.16	4.0	Cat. 6 28 AWG/ 18 - 14 AWG		
S050X125VAM	PXE Cassette, Self-Laminating Label, Vinyl, .50" W x 1.25" H, .38" Print-on Area, Clear/White	200						0.5	12.7	1.25	31.8	0.38	9.7	0.12	3.1	0.28	7.0	Cat. 3 UTP/ 12 - 10 AWG		
S050X150VAM	PXE Cassette, Self-Laminating Label, Vinyl, .50" W x 1.50" H, .50" Print-on Area, Clear/White	175								1.5	38.1	0.50	12.7	0.16	4.0	0.32	8.1	Cat. 5e UTP/ Cat. 6 UTP/ Cat. 6A UTP/ Cat. 5e FTP/ 10 - 6 AWG		
S100X075VAM	PXE Cassette, Self-Laminating Label, Vinyl, 1.0" W x .75" H, .25" Print-on Area, Clear/White	300								0.75	19.1	0.25	6.4	0.08	2.0	0.16	4.0	Cat. 6 28 AWG/ 18 - 14 AWG		
S100X125VAM	PXE Cassette, Self-Laminating Label, Vinyl, 1.0" W x 1.25" H, .38" Print-on Area, Clear/White	200	N	N	N	Y	Black on White			1.25	31.8	0.38	9.7	0.12	3.1	0.28	7.0	Cat. 3 UTP/ 12 - 10 AWG	1	5
S100X150VAM	PXE Cassette, Self-Laminating Label, Vinyl, 1.0" W x 1.50" H, .50" Print-on Area, Clear/White	175								1.5	38.1	0.50	12.7	0.16	4.0	0.32	8.1	Cat. 5e UTP/ Cat. 6 UTP/ Cat. 6A UTP/ Cat. 5e FTP/ 10 - 6 AWG		
S100X225VAM	PXE Cassette, Self-Laminating Label, Vinyl, 1.0" W x 2.25" H, .75" Print-on Area, Clear/White	125						1.0	25.4	2.25	57.2	0.75	19.1	0.24	6.1	0.48	12.2	Cat. 6 FTP/ Cat. 6A UTP/ Cat. 6A FTP/ 8 - 4 AWG		
S100X400VAM	PXE Cassette, Self-Laminating Label, Vinyl, 1.0" W x 4.0" H, 1.0" Print-on Area, Clear/White	70								4.0	101.6	1.0	25.4	0.32	8.1	0.95	24.3	2 - 1 AWG		
S100X650VAM	PXE Cassette, Self-Laminating Label, Vinyl, 1.0" W x 6.50" H, 1.5" Print-on Area, Clear/White	45								6.5	165.1	1.5	38.1	0.48	12.2	1.59	40.4	1/0-250 MCM		

Representative offering only, visit www.panduit.com for complete listing of products.

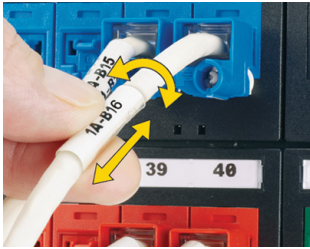
LabelCore™ Fiber Optic Cable Identification System **PATENTED**



- Provides a larger labeling surface on small fiber cables and allows legends to be clearly seen
- Sleeves are made of flexible PVC material
- Locate sleeve on straight section of cable at least 2 inches from fiber boot


Part Number	Color	Description	Std. Pkg. Qty.
NWSLC-2Y	Yellow	Yellow cable identification sleeve for 2mm simplex fiber cable, 1" long, use with labels: S100X150YAJ (Laser/Inkjet); S100X150VAM (MP300 Hand-held Printer); S100X150VA1Y or S100X150VATY (Thermal Transfer Printer)	100
NWSLC-2Y-AQ	Aqua	Aqua cable identification sleeve for 2mm simplex cable, 1" long, use with labels: S100X150YAJ (Laser/Inkjet); S100X150VAM (MP300 Hand-held Printer); S100X150VA1Y or S100X150VATY (Thermal Transfer Printer)	
NWSLC-3Y	Orange	Orange cable identification sleeve for 3mm simplex cable, 1" long, use with labels: S100X150YAJ (Laser/Inkjet); S100X150VAM (MP300 Hand-held Printer); S100X150VA1Y or S100X150VATY (Thermal Transfer Printer)	
NWSLC-7Y	White	White cable identification sleeve for 3mm duplex fiber cable, 1" long, use with labels: S100X225YAJ (Laser/Inkjet); S100X225VAM (MP300 Hand-held Printer); S100X225VATY or S200X225VATY (Thermal Transfer Printer)	

Ordering Information



Turn-Tell® Label Cassettes **PATENTED**

- Fast-loading Label Cassette includes both label material and ribbon to make changing labels easy
- Innovative label design allows labels to rotate for visibility from any angle, and for repositioning on the wire/cable to align legends and improve aesthetics
- Labels can be easily installed on existing terminated wires and assemblies without disconnecting the wires/cables

 Polymer Film (V1)

 -40°F to 200°F (-40°C to 93°C)


Part Number	Description	Labels per Cassette	Printer Compatibility				Print-on Area Color	Width		Length		Min. Cable O.D.		Max. Cable O.D.		Wire/Cable Size Range	Std. Pkg. Qty.	Std. Ctn. Qty.
			MP75	MP100	MP200	MP300		in.	mm	in.	mm	in.	mm	in.	mm			
R100X075V1M	PXE Cassette, Turn-Tell Self-Lam Label, Vinyl, 1.0" W x .75" H, .25" Print-on Area, Clear/White	175								0.75	19.1	0.12	3.1	0.16	4.1	Cat. 6 28 AWG/ 18 – 14 AWG		
R100X125V1M	PXE Cassette, Turn-Tell Self-Lam Label, Vinyl, 1.0" W x 1.25" H, .38" Print-on Area, Clear/White	125								1.25	31.8	0.16	4.1	0.22	5.6	Cat. 3 UTP/12 – 10 AWG		
R100X150V1M	PXE Cassette, Turn-Tell Self-Lam Label, Vinyl, 1.0" W x 1.50" H, .50" Print-on Area, Clear/White	100	N	N	N	Y	Black on White	1.0	25.4	1.5	38.1	0.22	5.6	0.28	7.1	Cat. 5e UTP/ Cat. 6 UTP/ Cat. 6A UTP/	1	5
R100X225V1M	PXE Cassette, Turn-Tell Self-Lam Label, Vinyl, 1.0" W x 2.25" H, .75" Print-on Area, Clear/White	75								2.25	57.2	0.28	7.1	0.39	9.9	Cat. 6 FTP/ Cat. 6 UTP/ Cat. 6A FTP/8-4 AWG		

Representative offering only, visit www.panduit.com for complete listing of products.



Continuous Self-Laminating Labels

- Fast-loading Label Cassette includes both label material and ribbon to make changing labels easy
- Self-laminating adhesive labels for wire/cable identification include a white print-on area and clear over-laminate

 Self-Laminating Vinyl (VA)

 -40°F to 150°F (-40°C to 66°C)

Part Number	Description	Printer Compatibility				Print-on Area Color	Width		Length		Print-on Area Width		Min. Cable O.D.		Max. Cable O.D.		Wire/Cable Size Range	Std. Pkg. Qty.	Std. Ctn. Qty.
		MP75	MP100	MP200	MP300		in.	mm	ft.	m	in.	mm	in.	mm	in.	mm			
S000X100VAM	PXE Cassette, Continuous Self-Lam Tape, Vinyl, 1.0" W x 26' L, White	N	Y	Y	Y	White	0.945	24	26.2	8.0	0.315	8	0.10	2.5	0.20	5.1	12 – 10 AWG	1	5
S000X150VAM	PXE Cassette, Continuous Self-Lam Tape, Vinyl, 1.5" W x 26' L, White	N	N	N	Y	White	1.417	36	26.2	8.0	0.512	13.0	0.16	4.0	0.32	8.1	Cat. 5e/ Cat. 6	1	5

Representative offering only, visit www.panduit.com for complete listing of products.

Ordering Information

Marker Plate Label Cassettes



- Fast-loading PXE™ Label Cassette includes both label material and ribbon to make changing labels easy
- Non-adhesive and halogen free; used to identify wires, cables, equipment, and many other applications
- Designed for use on larger diameter wire/cables and may be applied after all terminations are complete
- Attachable in horizontal or vertical orientation
- Meets requirements for MIL-STD-202G, Method 215K, Soutlion A, C and D
- Meets the outgassing requirements of ASTM E-595 suitable for use in air handling spaces



Polyester/Polyolefin
(Y6, Y7)

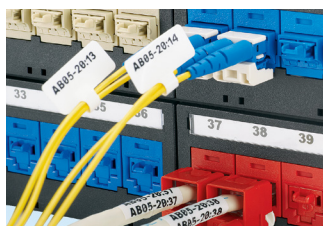


-40°F to 180°F
(-40°C to 82°C)

Part Number	Description	Printer Compatibility				Print-on Area Color	Width		Length		Print-on Area Width		Recommended Cable Tie		Labels Per Cassette	Std. Pkg. Qty.	Std. Ctn. Qty.
		MP75	MP100	MP200	MP300		in.	mm	in.	mm	in.	mm	Vertical	Horizontal			
M300X050Y6M	PXE Cassette, Marker plate, polyester, 3.0" W x .50" H, Yellow	N	N	N	Y	Black on Yellow	3.00	76.2	0.50	12.7	1.80	45.7	PLT2.5I-C	PLT2.5I-C	65	1	5
M300X050Y7M	PXE Cassette, Marker plate, polyester, 3.0" W x .50" H, White	N	N	N	Y	Black on White	3.00	76.2	0.50	12.7	1.80	45.7	PLT2.5I-C	PLT2.5I-C	65	1	5

Representative offering only, visit www.panduit.com for complete listing of products.

Flag Label Cassette



- Fast-loading PXE™ Label Cassette includes both label material and ribbon to make changing labels easy
- Provides larger label area for small cables
- Innovative design allows flag labels to be applied in either adhesive or non-adhesive orientations



Polyester
(AJ)



-40°F to 302°F
(-40°C to 150°C)

Part Number	Description	Printer Compatibility				Ribbon & Material Color	Width		Length		Min. Cable O.D.		Max. Wire O.D.		Wire Range	Labels Per Cassette	Std. Pkg. Qty.	Std. Ctn. Qty.
		MP75	MP100	MP200	MP300		in.	mm	in.	mm	in.	mm	in.	mm				
F100X150AJM	PXE Cassette, Flag Label, Polyester, 1.00" W x 1.5" H, White	N	N	N	Y	Black on White	1.00	25.4	1.5	38.1	0.12	3.1	0.2	5.1	12 - 10 AWG	150	1	5

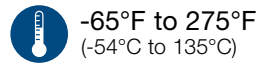
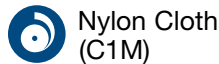
Representative offering only, visit www.panduit.com for complete listing of products.

Ordering Information



Non-Laminated Label Cassettes

- Fast-loading Label Cassette includes both label material and ribbon to make changing labels easy
- Non-laminated adhesive labels for wire/cable identification



Die-Cut Nylon Cloth Labels

Part Number	Description	Printer Compatibility				Print-on Area Color	Width		Length		Min. Cable O.D.		Max. Wire O.D.		Wire Range	Labels Per Cassette	Std. Pkg. Qty.	Std. Ctn. Qty.
		MP75	MP100	MP200	MP300		in.	mm	in.	mm	in.	mm	in.	mm				
N050X075C1M	PXE Cassette, Comp Label, Adhesive Nylon Cloth, 0.50" W x .75" H, White					Black on White	0.50	12.7							12 - 10 AWG	275	1	5
N100X075C1M	PXE Cassette, Comp Label, Adhesive Nylon Cloth, 1.00" W x .75" H, White	N	N	N	Y				0.75	19.1	0.12	3.1	0.16	4.1				
N100X125C1M	PXE Cassette, Comp Label, Adhesive Nylon Cloth, 1.00" W x 1.25" H, White						1.00	25.4			1.25	31.8	0.2	5.1				

Continuous Nylon Cloth Tape

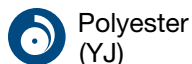
Part Number	Description	Printer Compatibility				Print-on Area Color	Height		Length		Std. Pkg. Qty.	Std. Ctn. Qty.
		MP75	MP100	MP200	MP300		in.	mm	ft.	m		
T050X000C1M-BK	PXE Cassette, Continuous Tape, Nylon Cloth, 0.50" W x 19' L, Black on White					Black on White	0.465	11.82			1	5
T075X000C1M-BK	PXE Cassette, Continuous Tape, Nylon Cloth, 0.75" W x 19' L, Black on White	Y	N	Y	Y		0.702	17.82	19	6		
T100X000C1M-BK	PXE Cassette, Continuous Tape, Nylon Cloth, 1.00" W x 19' L, Black on White	N					0.938	23.82				

Representative offering only, visit www.panduit.com for complete listing of products.



General Component Label Cassettes

- Fast-loading PXE™ Label Cassette includes both label material and ribbon to make changing labels easy
- Multi-purpose labels for identifying flat surfaces such as components, control panels, circuit boards, and general labeling
- Die-cut labels designed to provide maximum aesthetic quality and appearance



Part Number	Description	Printer Compatibility				Ribbon & Material Color	Width		Height		Labels Per Cassette	Std. Pkg. Qty.	Std. Ctn. Qty.
		MP75	MP100	MP200	MP300		in.	mm	in.	mm			
C100X050YJM	PXE Cassette, Comp Label, Adhesive Polyester, 1.00" W x .50" H, White					Black on White	1.00	25.4	0.50	12.7	420	1	5
C200X100YJM	PXE Cassette, Comp Label, Adhesive Polyester, 2.00" W x 1.00" H, White	N	N	N	Y		2.00	50.8	1.00	25.4	140		

Representative offering only, visit www.panduit.com for complete listing of products.


Ordering Information

Continuous Heat Shrink Labels




- Fast-loading Label Cassette includes both label material and ribbon to make changing labels easy
- Non-adhesive flattened heat shrinkable polyolefin for wire/cable identification



 Heat Shrinkable Polyolefin
3:1 Heat Shrink Ratio (H1, H2)

Heat Shrinkable Polyolefin
2:1 Heat Shrink Ratio (HP, HX)

 -40°F to 257°F
(-40°C to 125°C)

-67°F to 257°F
(-55°C to 125°C)

Part Number	Description	Shrink Ratio	Mil Spec	Printer Compatibility				Ribbon & Material Color	Width		Length		Min. Cable O.D.		Max. Cable O.D.		Wire/Cable Size Range	Std. Pkg. Qty.	Std. Ctn. Qty.			
				MP75	MP100	MP200	MP300		in.	mm	ft.	m	in.	mm	in.	mm						
H000X025H1M	PXE Cassette, Continuous Heat Shrink Tubing, Mil Grade Polyolefin, .25" W x 8' L, White	3:1	Y	Y				Black on White	0.27	6.8			0.06	1.4	0.16	4.1	22 - 18 AWG					
H000X025H2M	PXE Cassette, Continuous Heat Shrink Tubing, Mil Grade Polyolefin, .25" W x 8' L, Yellow							Black on Yellow														
H000X034H1M	PXE Cassette, Continuous Heat Shrink Tubing, Mil Grade Polyolefin, .34" W x 8' L, White							Black on White	0.37	9.3			0.07	1.9	0.22	5.7				18 - 12 AWG		
H000X034H2M	PXE Cassette, Continuous Heat Shrink Tubing, Mil Grade Polyolefin, .34" W x 8' L, Yellow							Black on Yellow														
H000X044H1M	PXE Cassette, Continuous Heat Shrink Tubing, Mil Grade Polyolefin, .44" W x 8' L, White	Y	Y				Black on White	0.48	12.3			0.09	2.4	0.3	7.6	16 - 8 AWG						
H000X044H2M	PXE Cassette, Continuous Heat Shrink Tubing, Mil Grade Polyolefin, .44" W x 8' L, Yellow						Black on Yellow															
H000X064HPM	PXE Cassette, 2:1 Continuous Heat Shrink Tubing, Polyolefin, .64" W x 8' L, White	2:1	N				Y	Black on White	0.71	18.0	8.2	2.5	0.21	5.3	0.43				10.9	8 - 2 AWG	1	5
H000X064HXM	PXE Cassette, 2:1 Continuous Heat Shrink Tubing, Polyolefin, .64" W x 8' L, Yellow							Black on Yellow														
H000X084HPM	PXE Cassette, 2:1 Continuous Heat Shrink Tubing, Polyolefin, .84" W x 8' L, White							Black on White	0.87	22.5			0.32	8.1	0.54	13.7	4 - 1 AWG					
H000X084HXM	PXE Cassette, 2:1 Continuous Heat Shrink Tubing, Polyolefin, .84" W x 8' L, Yellow							Black on Yellow														
H000X134HPM	PXE Cassette, 2:1 Continuous Heat Shrink Tubing, Polyolefin, 1.34" W x 8' L, White	N	N				Black on White	1.34	34.0			0.43	10.9	0.79	20.1	1 - 250 MCM AWG						
H000X134HXM	PXE Cassette, 2:1 Continuous Heat Shrink Tubing, Polyolefin, 1.34" W x 8' L, Yellow						Black on Yellow															

Representative offering only, visit www.panduit.com for complete listing of products.

Ordering Information



Network Component Label Cassettes

- Fast-loading PXE™ Label Cassettes include both label material and ribbon to make changing labels easy
- Use for identifying patch panels, faceplates, punchdown blocks, and other network systems hardware
- Die-cut labels designed to provide maximum aesthetic quality and appearance

- Polyolefin (FJ) -40°F to 180°F (-40°C to 82°C)
- Non-Adhesive Polyester (Y1) -10°F to 311°F (-23°C to 155°C)

Polyolefin Component Labels

Part Number	Description	Printer Compatibility				Ribbon & Material Color	Width		Height		Application	Labels Per Cassette	Std. Pkg. Qty.	Std. Ctn. Qty.
		MP75	MP100	MP200	MP300		in.	mm	in.	mm				
C061X030FJM	PXE Cassette, Network Label, Adhesive Polyolefin, .61" W x .30" H, White					Black on White	0.61	15.5	0.3	7.6	1-port	370	1	5
C125X030FJM	PXE Cassette, Network Label, Adhesive Polyolefin, 1.25" W x .30" H, White	N	N	N	Y		1.25	31.8	0.3	7.6	2-port	210		
C252X030FJM	PXE Cassette, Network Label, Adhesive Polyolefin, 2.52" W x .30" H, White						2.52	64.0	0.3	7.6	4-port	110		
C379X030FJM	PXE Cassette, Network Label, Adhesive Polyolefin, 3.79" W x .30" H, White						3.79	96.3	0.3	7.6	6-port	60		

Representative offering only, visit www.panduit.com for complete listing of products.

Non-Adhesive Polyester Component Labels

Part Number	Description	Printer Compatibility				Ribbon & Material Color	Width		Height		Application	Labels Per Cassette	Std. Pkg. Qty.	Std. Ctn. Qty.
		MP75	MP100	MP200	MP300		in.	mm	in.	mm				
C195X040Y1M	PXE Cassette, Comp Label, NonAdhesive Polyester, 1.95" W x .40" H, White	N	N	N	Y	Black on White	1.95	49.5	0.4	10.2	Single-gang faceplate	125	1	5
C261X035Y1M	PXE Cassette, Comp Label, NonAdhesive Polyester, 2.61" W x .35" H, White						2.61	66.3	0.35	8.9	4-port	100		

Representative offering only, visit www.panduit.com for complete listing of products.



Continuous Terminal Block Label Cassettes

- Fast-loading Label Cassette includes both label material and ribbon to make changing labels easy
- Print terminal block labels ranging in size from 0.24 inches to 0.38 inches

- Polyolefin (FJM) -40°F to 180°F (-40°C to 82°C)

Part Number	Description	Printer Compatibility				Print-on Area Color	Height		Length		Std. Pkg. Qty.	Std. Ctn. Qty.
		MP75	MP100	MP200	MP300		in.	mm	ft.	m		
T024X000FJM-BK	PXE Cassette, Continuous Tape, Polyolefin, 0.24" W x 23' L, Black on White	Y	Y	Y	Y	Black on White	0.229	5.82	23	7	1	5
T038X000FJM-BK	PXE Cassette, Continuous Tape, Polyolefin, 0.38" W x 23' L, Black on White						0.347	8.82				

Representative offering only, visit www.panduit.com for complete listing of products.

Ordering Information



Continuous Tape Cassettes

- Fast-loading Label Cassette includes both label material and ribbon to make changing labels easy
- Print custom pipe markers, voltage markers, signs, bin markers, and network ID labels on demand
- For flat label applications only

- Vinyl Material (VXM & VPM) -40°F to 194°F (-40°C to 90°C)
- Polyester Material (BPM, BQM, BSM, BUM, BWM, BXM, BYM, YKM) -40°F to 257°F (-40°C to 125°C)
- Magnetic Material (MPM & MXM) 14°F to 104°F (-10°C to 40°C)

Part Number	Part Description	Printer Compatibility				Ribbon & Material Color	Width		Length		Std. Pkg. Qty.	Std. Ctn. Qty.
		MP75	MP100	MP200	MP300		in.	mm	ft.	m		
T024X000BPM-BK	PXE Cassette, Continuous Tape, Polyester, 0.24" W x 30' L, Black on White					Black on White	0.229	5.8	30	9.1		
T038X000VPM-BK	PXE Cassette, Continuous Tape, Vinyl, 0.38" W x 23' L, Black on White					Black on White			23	7.0		
T038X000BPM-BK	PXE Cassette, Continuous Tape, Polyester, 0.38" W x 30' L, Black on White					Black on White			30	9.1		
T038X000VXM-BK	PXE Cassette, Continuous Tape, Vinyl, 0.38" W x 23' L, Black on Yellow					Black on Yellow	0.354	9.0	23	7.0		
T038X000BXM-BK	PXE Cassette, Continuous Tape, Polyester, 0.38" W x 30' L, Black on Yellow					Black on Yellow						
T038X000YKM-BK	PXE Cassette, Continuous Tape, Polyester, 0.38" W x 30' L, Black on Clear					Black on Clear			30	9.1		
T038X000BYM-WH	PXE Cassette, Continuous Tape, Polyester, 0.38" W x 30' L, White on Black					White on Black						
T050X000VPM-BK	PXE Cassette, Continuous Tape, Vinyl, 0.50" W x 23' L, Black on White					Black on White			23	7.0		
T050X000BPM-BK	PXE Cassette, Continuous Tape, Polyester, 0.50" W x 30' L, Black on White					Black on White			30	9.1		
T050X000VXM-BK	PXE Cassette, Continuous Tape, Vinyl, 0.50" W x 23' L, Black on Yellow	Y				Black on Yellow	0.472	12.0	23	7.0		
T050X000BXM-BK	PXE Cassette, Continuous Tape, Polyester, 0.50" W x 30' L, Black on Yellow					Black on Yellow						
T050X000YKM-BK	PXE Cassette, Continuous Tape, Polyester, 0.50" W x 30' L, Black on Clear					Black on Clear			30	9.1		
T050X000BYM-WH	PXE Cassette, Continuous Tape, Polyester, 0.50" W x 30' L, White on Black					White on Black						
T075X000VPM-BK	PXE Cassette, Continuous Tape, Vinyl, 0.75" W x 23' L, Black on White					Black on White			23	7.0		
T075X000BPM-BK	PXE Cassette, Continuous Tape, Polyester, 0.75" W x 30' L, Black on White					Black on White			30	9.1		
T075X000VXM-BK	PXE Cassette, Continuous Tape, Vinyl, 0.75" W x 23' L, Black on Yellow		Y	Y	Y	Black on Yellow	0.710	18.0	23	7.0	1	5
T075X000BXM-BK	PXE Cassette, Continuous Tape, Polyester, 0.75" W x 30' L, Black on Yellow					Black on Yellow						
T075X000YKM-BK	PXE Cassette, Continuous Tape, Polyester, 0.75" W x 30' L, Black on Clear					Black on Clear			30	9.1		
T075X000BYM-WH	PXE Cassette, Continuous Tape, Polyester, 0.75" W x 30' L, White on Black					White on Black						
T100X000MPM-BK	PXE Cassette, Continuous Tape, Magnetic, 1.00" W x 4.9' L, Black on White					Black on White			4.9	1.5		
T100X000MXM-BK	PXE Cassette, Continuous Tape, Magnetic, 1.00" W x 4.9' L, Black on Yellow					Black on Yellow						
T100X000VPM-BK	PXE Cassette, Continuous Tape, Vinyl, 1.00" W x 23' L, Black on White					Black on White			23	7.0		
T100X000BPM-BK	PXE Cassette, Continuous Tape, Polyester, 1.00" W x 30' L, Black on White					Black on White			30	9.1		
T100X000VXM-BK	PXE Cassette, Continuous Tape, Vinyl, 1.00" W x 23' L, Black on Yellow					Black on Yellow			23	7.0		
T100X000BXM-BK	PXE Cassette, Continuous Tape, Polyester, 1.00" W x 30' L, Black on Yellow					Black on Yellow	0.945	24.0				
T100X000YKM-BK	PXE Cassette, Continuous Tape, Polyester, 1.00" W x 30' L, Black on Clear					Black on Clear						
T100X000BQM-WH	PXE Cassette, Continuous Tape, Polyester, 1.00" W x 30' L, White on Blue					White on Blue						
T100X000BSM-WH	PXE Cassette, Continuous Tape, Polyester, 1.00" W x 30' L, White on Green					White on Green			30	9.1		
T100X000BUM-BK	PXE Cassette, Continuous Tape, Polyester, 1.00" W x 30' L, Black on Orange					Black on Orange						
T100X000BWM-WH	PXE Cassette, Continuous Tape, Polyester, 1.00" W x 30' L, White on Red					White on Red						
T100X000BYM-WH	PXE Cassette, Continuous Tape, Polyester, 1.00" W x 30' L, White on Black					White on Black						







Representative offering only, visit www.panduit.com for complete listing of products.

Ordering Information (continued)



Continuous Tape Cassettes (continued)

- Fast-loading Label Cassette includes both label material and ribbon to make changing labels easy
- Print custom pipe markers, voltage markers, signs, bin markers, and network ID labels on demand
- For flat label applications only

-  Vinyl Material (VXM & VPM)  -40°F to 194°F (-40°C to 90°C)
-  Polyester Material (BPM, BQM, BSM, BUM, BWM, BXM, BYM, YKM)  -40°F to 257°F (-40°C to 125°C)
-  Magnetic Material (MPM & MXM)  14°F to 104°F (-10°C to 40°C)

Part Number	Part Description	Printer Compatibility				Ribbon & Material Color	Width		Length		Std. Pkg. Qty.	Std. Ctn. Qty.
		MP75	MP100	MP200	MP300		in.	mm	ft.	m		
T150X000MPM-BK	PXE Cassette, Continuous Tape, Magnetic, 1.50" W x 4.9' L, Black on White					Black on White			4.9	1.5		
T150X000MXM-BK	PXE Cassette, Continuous Tape, Magnetic, 1.50" W x 4.9' L, Black on Yellow					Black on Yellow						
T150X000VPM-BK	PXE Cassette, Continuous Tape, Vinyl, 1.50" W x 23' L, Black on White					Black on White			23	7.0		
T150X000BPM-BK	PXE Cassette, Continuous Tape, Polyester, 1.50" W x 30' L, Black on White					Black on White			30	9.1		
T150X000VXM-BK	PXE Cassette, Continuous Tape, Vinyl, 1.50" W x 23' L, Black on Yellow					Black on Yellow			23	7.0		
T150X000BXM-BK	PXE Cassette, Continuous Tape, Polyester, 1.50" W x 30' L, Black on Yellow	N	N	N	Y	Black on Yellow	1.471	36.0			1	5
T150X000YKM-BK	PXE Cassette, Continuous Tape, Polyester, 1.50" W x 30' L, Black on Clear					Black on Clear						
T150X000BQM-WH	PXE Cassette, Continuous Tape, Polyester, 1.50" W x 30' L, White on Blue					White on Blue						
T150X000BSM-WH	PXE Cassette, Continuous Tape, Polyester, 1.50" W x 30' L, White on Green					White on Green			30	9.1		
T150X000BUM-BK	PXE Cassette, Continuous Tape, Polyester, 1.50" W x 30' L, Black on Orange					Black on Orange						
T150X000BWM-WH	PXE Cassette, Continuous Tape, Polyester, 1.50" W x 30' L, White on Red					White on Red						
T150X000BYM-WH	PXE Cassette, Continuous Tape, Polyester, 1.50" W x 30' L, White on Black					White on Black						

Representative offering only, visit www.panduit.com for complete listing of products.



Like what you see and want more?

Visit www.panduit.com/mobileprinters for the full offering of Panduit products

Mobile Printers – Competitive Comparison



FEATURES	MP300	Brady BMP41	Brother PT-E550	Dymo XTL300
Label Width Up To	1.5 in.	1.0 in.	1.0 in.	1.0 in.
Label Offering	★★★★★	★★★★★	★★★	★★
Print Resolution	360 dpi	300 dpi	180 dpi	300 dpi
Print Speeds Up To	1.4 lps	1.3 lps	1.2 lps	NA
Cutter	Automatic: Full and Half Cutting	Manual	Automatic: Full Cutting	Manual

Competitive comparison based on published specifications.

PXE SERIES



MP300



MP200



MP100



MP75

WORLDWIDE SUBSIDIARIES AND SALES OFFICES

PANDUIT US/CANADA
Phone: 800.777.3300

PANDUIT EUROPE LTD.
London, UK
Phone: 44.20.8601.7200

PANDUIT SINGAPORE PTE. LTD.
Republic of Singapore
Phone: 65.6305.7575

PANDUIT JAPAN
Tokyo, Japan
Phone: 81.3.6863.6000

PANDUIT LATIN AMERICA
Guadalajara, Mexico
Phone: 52.33.3777.6000

PANDUIT AUSTRALIA PTY. LTD.
Victoria, Australia
Phone: 61.3.9794.9020

For a copy of Panduit product warranties, log on to www.panduit.com/warranty

For more information

Visit us at www.panduit.com

Contact Customer Service by email: cs@panduit.com
or by phone: 800.777.3300

