



Powering Business Worldwide

[pe.eaton.com](http://pe.eaton.com)

## Type CH Style 3/4 in Loadcenter and Breaker Accessories

NL20

UPC:782113099156

### Dimensions:

- **Height:** .1 IN
- **Length:** 8 IN
- **Width:** 5 IN

**Weight:**.1 LB

**Notes:**Add-on

### Warranties:

- Limited lifetime

### Specifications:

- **Type:** Neutral lug
- **Amperage Rating:** 125A
- **Used With:** #2/0 max wire size loadcenters

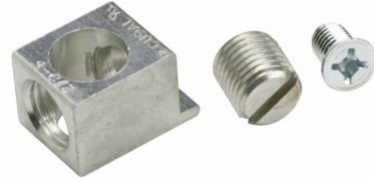
### Supporting documents:

- [Eatons Volume 1-Residential and Light Commercial](#)
- [Eaton Specification Sheet - NL20](#)

### Certifications:

- UL 489

**Product compliance:** No Data





Powering Business Worldwide

[pe.eaton.com](http://pe.eaton.com)

## Type CH Style 3/4 in Loadcenter and Breaker Accessories

NL20

UPC:782113099156

### Dimensions:

- **Height:** .1 IN
- **Length:** 8 IN
- **Width:** 5 IN

**Weight:**.1 LB

**Notes:**Add-on

### Warranties:

- Limited lifetime

### Specifications:

- **Type:** Neutral lug
- **Amperage Rating:** 125A
- **Used With:** #2/0 max wire size loadcenters

### Supporting documents:

- [Eatons Volume 1-Residential and Light Commercial](#)
- [Eaton Specification Sheet - NL20](#)

### Certifications:

- UL 489

**Product compliance:** No Data

