

Heavy duty, Non-Metallic QuickLATCH™

Made in USA 

NEW!
more on reverse

Installed Strut Clip • For RIGID and EMT



Fast, Easy Installation!
Saves 20 seconds per installation

Arlington's heavy duty NM3100 series QuickLATCH™ with *installed strut clip* holds RIGID and EMT securely on strut. Use it like a pipe hanger.



NM3100
1/2" EMT

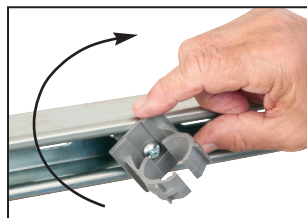
Stainless steel screw

One-piece QuickLATCH saves time, about 20 seconds per installation... over 33¢ each at \$60.00 per hour labor rate.

Fast and easy to install. Insert the hanger into the strut, twist to lock the pre-installed clip in place then tighten screw to secure QuickLATCH to strut. Push RIGID or EMT into the hanger to lock it in place.



1 Insert QuickLATCH into strut. The strut clip is already attached so you save time.



2 Twist QuickLATCH to seat clip in strut.



3 Tighten screw for secure installation on strut.



4 Push conduit into QuickLATCH to snap in place.



5 Secure installation of conduit to strut.



Easy screwdriver removal

- UV rated, corrosion resistant for outdoor use
- Stainless steel screw
- Mounts vertically or horizontally
- Screwdriver removal, reusable
- Listed for use in environmental air handling spaces per 2020 NEC, article 300.22(c)

See reverse for even more QuickLATCH products!

Patent pending

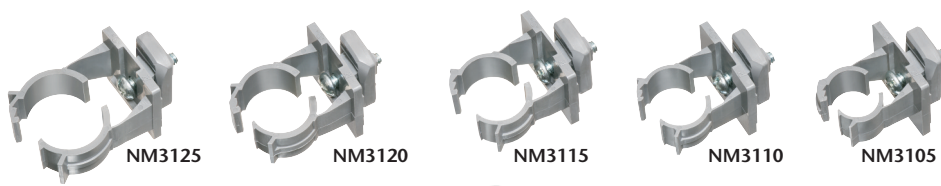


Arlington®

1 Stauffer Industrial Park
Scranton, PA 18517

800/233.4717 • Fax 570/562.0646

www.aifittings.com

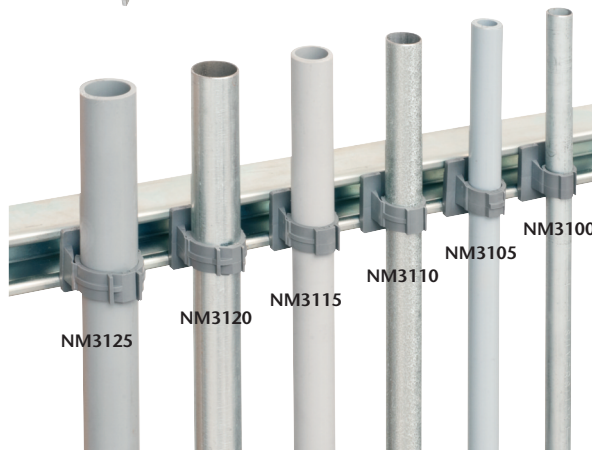


QUICKLATCH™ PIPE HANGER

| CATALOG NUMBER | UPC/DEI/NAED MFG. #018997 | RIGID, IMC PVC SIZE | EMT SIZE | STD PKG |
|----------------|---------------------------|---------------------|----------|---------|
| NM3100 | 54027 | --- | 1/2" | 100 |
| NM3105 | 54028 | 1/2" | --- | 100 |
| NM3110 | 54029 | --- | 3/4" | 100 |
| NM3115 | 54030 | 3/4" | --- | 100 |
| NM3120 | 54031 | --- | 1" | 100 |
| NM3125 | 54032 | 1" | --- | 100 |

Includes 1/4"-20 stainless steel screw and strut clip (installed)

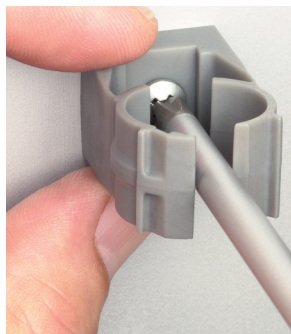
NM3100 series 0120/15M © 2020 Arlington Industries, Inc.



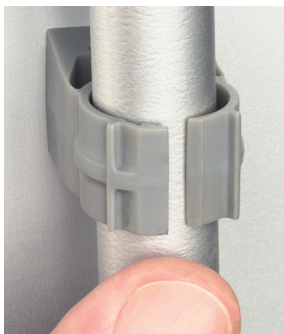
UV Rated • Non-metallic QuickLATCH™

Made in USA 

Works just like a Pipe Hanger • Easy to Install



Mount to surface with a screw.



Press down on pipe to lock it firmly in place.



Removable Use screwdriver to lift tab.

Fast and easy to install, one-piece, non-metallic **QuickLATCH™** mounts to walls, metal strut and studs, and threaded rod up to 1/4-20...works with Arlington's Strut Clip™ too. *Strut Clip holds pipe hangers securely on strut.*

It fits 1/2" to 4" EMT, RIGID, IMC and PVC. The larger 2-1/2" to 4" sizes have an extra opening for the optional securing of tie wire or cable tie.

- Corrosion resistant
- Horizontal or vertical mounting
- Integral slot keeps nut from spinning

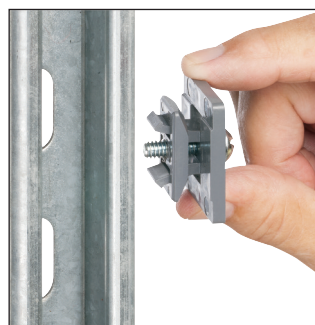


2-1/2" to 4"
Press pipe into QuickLATCH, up to the first notch to lock it in place. Then squeeze tabs together for a super-secure hold.

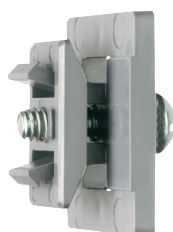


| Catalog Number | UPC/DEI/NAED Mfg. #018997 | RIGID, IMC PVC sizes | EMT size | LT size | Flex size | ENT size | Copper Tubing | Copper Pipe | Std Pkg |
|----------------|---------------------------|----------------------|----------|---------|-----------|----------|---------------|-------------|---------|
| NM1900 | 54514 | --- | --- | 5/16 | --- | --- | 1/2 | --- | 100 |
| NM2000 | 54515 | --- | 1/2 | 3/8 | --- | --- | --- | 3/8 | 100 |
| NM2005 | 54525 | 1/2 | --- | 1/2 | 1/2 | 1/2 | --- | 1/2 | 100 |
| NM2010 | 54516 | --- | 3/4 | --- | --- | --- | 3/4 | --- | 100 |
| NM2015 | 54526 | 3/4 | --- | 3/4 | 3/4 | 3/4 | --- | 3/4 | 100 |
| NM2020 | 54517 | --- | 1 | --- | --- | --- | 1 | --- | 100 |
| NM2025 | 54518 | 1 | --- | 1 | 1 | 1 | --- | 1 | 100 |
| NM2030 | 54528 | --- | 1-1/4 | --- | --- | --- | 1-1/4 | --- | 100 |
| NM2040 | 54519 | 1-1/4 | 1-1/2 | --- | --- | --- | 1-1/2 | 1-1/4 | 100 |
| NM2045 | 54544 | 1-1/2 | --- | 1-1/2 | 1-1/2 | --- | --- | 1-1/2 | 100 |
| NM2150 | 54547 | --- | --- | --- | --- | --- | 2 | --- | 50 |
| NM2050 | 54520 | 2 | 2 | 2 | 2 | --- | 2 | --- | 50 |
| NM2060 | 54521 | 2-1/2 | 2-1/2 | 2-1/2 | 2-1/2 | --- | --- | --- | 50 |
| NM2070 | 54522 | 3 | 3 | 3 | 3 | --- | --- | --- | 25 |
| NM2080 | 54523 | 3-1/2 | 3-1/2 | 3-1/2 | 3-1/2 | --- | --- | --- | 25 |
| NM2090 | 54524 | 4 | 4 | 4 | 4 | --- | --- | --- | 10 |

| Catalog Number | UPC/DEI/NAED Mfg. #018997 | Description STRUT CLIP™ | Unit/Std Pkg |
|----------------|---------------------------|--|--------------|
| NM1000 | 54615 | UV rated, non-metallic clip Holds pipe hangers and/or conduit secure on strut Includes 1/4"-20 screw (installed) | 100 |



Our QuickLATCH™ Pipe Hanger installs on Strut Clip™



NM1000
STRUT CLIP
Strut Conduit Support



Arlington®

1 Stauffer Industrial Park
Scranton, PA 18517
800/233.4717 • Fax 570/562.0646
www.aifittings.com

Distributed by

Heavy duty, Non-Metallic QuickLATCH™

Made in USA 

NEW!
more on reverse

Installed Strut Clip • For RIGID and EMT



Fast, Easy Installation!
Saves 20 seconds per installation

Arlington's heavy duty NM3100 series QuickLATCH™ with *installed strut clip* holds RIGID and EMT securely on strut. Use it like a pipe hanger.



NM3100
1/2" EMT

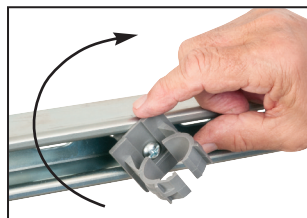
Stainless steel screw

One-piece QuickLATCH saves time, about 20 seconds per installation... over 33¢ each at \$60.00 per hour labor rate.

Fast and easy to install. Insert the hanger into the strut, twist to lock the pre-installed clip in place then tighten screw to secure QuickLATCH to strut. Push RIGID or EMT into the hanger to lock it in place.



1 Insert QuickLATCH into strut. The strut clip is already attached so you save time.



2 Twist QuickLATCH to seat clip in strut.



3 Tighten screw for secure installation on strut.



4 Push conduit into QuickLATCH to snap in place.



5 Secure installation of conduit to strut.



Easy screwdriver removal

- UV rated, corrosion resistant for outdoor use
- Stainless steel screw
- Mounts vertically or horizontally
- Screwdriver removal, reusable
- Listed for use in environmental air handling spaces per 2020 NEC, article 300.22(c)

See reverse for even more QuickLATCH products!

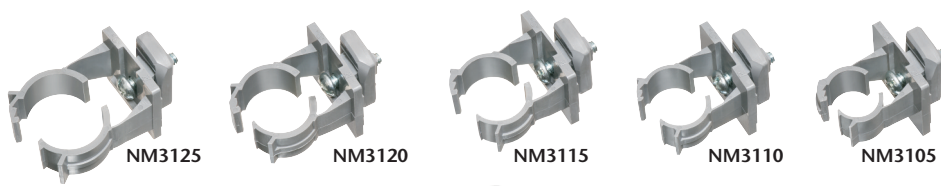
Patent pending



Arlington®

1 Stauffer Industrial Park
Scranton, PA 18517

800/233.4717 • Fax 570/562.0646
www.aifittings.com



QUICKLATCH™ PIPE HANGER

| CATALOG NUMBER | UPC/DEI/NAED MFG. #018997 | RIGID, IMC PVC SIZE | EMT SIZE | STD PKG |
|----------------|---------------------------|---------------------|----------|---------|
| NM3100 | 54027 | --- | 1/2" | 100 |
| NM3105 | 54028 | 1/2" | --- | 100 |
| NM3110 | 54029 | --- | 3/4" | 100 |
| NM3115 | 54030 | 3/4" | --- | 100 |
| NM3120 | 54031 | --- | 1" | 100 |
| NM3125 | 54032 | 1" | --- | 100 |

Includes 1/4"-20 stainless steel screw and strut clip (installed)

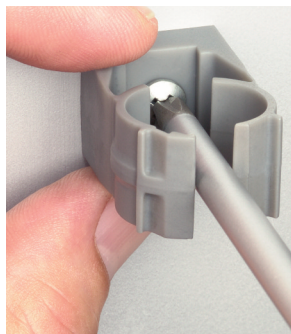
NM3100 series 0120/15M © 2020 Arlington Industries, Inc.



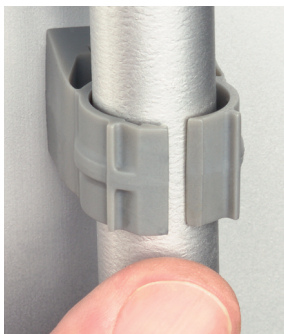
UV Rated • Non-metallic QuickLATCH™

Made in USA 

Works just like a Pipe Hanger • Easy to Install



Mount to surface with a screw.



Press down on pipe to lock it firmly in place.



Removable Use screwdriver to lift tab.

Fast and easy to install, one-piece, non-metallic **QuickLATCH™** mounts to walls, metal strut and studs, and threaded rod up to 1/4-20...works with Arlington's Strut Clip™ too. *Strut Clip holds pipe hangers securely on strut.*

It fits 1/2" to 4" EMT, RIGID, IMC and PVC. The larger 2-1/2" to 4" sizes have an extra opening for the optional securing of tie wire or cable tie.

- Corrosion resistant
- Horizontal or vertical mounting
- Integral slot keeps nut from spinning

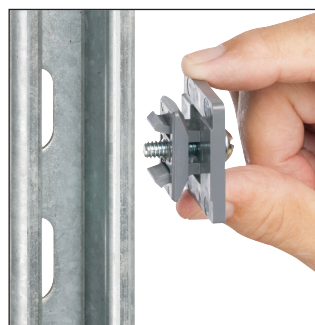


2-1/2" to 4"
Press pipe into QuickLATCH, up to the first notch to lock it in place. Then squeeze tabs together for a super-secure hold.

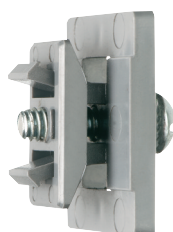


| Catalog Number | UPC/DEI/NAED Mfg. #018997 | RIGID, IMC PVC sizes | EMT size | LT size | Flex size | ENT size | Copper Tubing | Copper Pipe | Std Pkg |
|----------------|---------------------------|----------------------|----------|---------|-----------|----------|---------------|-------------|---------|
| NM1900 | 54514 | --- | --- | 5/16 | --- | --- | 1/2 | --- | 100 |
| NM2000 | 54515 | --- | 1/2 | 3/8 | --- | --- | --- | 3/8 | 100 |
| NM2005 | 54525 | 1/2 | --- | 1/2 | 1/2 | 1/2 | --- | 1/2 | 100 |
| NM2010 | 54516 | --- | 3/4 | --- | --- | --- | 3/4 | --- | 100 |
| NM2015 | 54526 | 3/4 | --- | 3/4 | 3/4 | 3/4 | --- | 3/4 | 100 |
| NM2020 | 54517 | --- | 1 | --- | --- | --- | 1 | --- | 100 |
| NM2025 | 54518 | 1 | --- | 1 | 1 | 1 | --- | 1 | 100 |
| NM2030 | 54528 | --- | 1-1/4 | --- | --- | --- | 1-1/4 | --- | 100 |
| NM2040 | 54519 | 1-1/4 | 1-1/2 | --- | --- | --- | 1-1/2 | 1-1/4 | 100 |
| NM2045 | 54544 | 1-1/2 | --- | 1-1/2 | 1-1/2 | --- | --- | 1-1/2 | 100 |
| NM2150 | 54547 | --- | --- | --- | --- | --- | 2 | --- | 50 |
| NM2050 | 54520 | 2 | 2 | 2 | 2 | --- | 2 | --- | 50 |
| NM2060 | 54521 | 2-1/2 | 2-1/2 | 2-1/2 | 2-1/2 | --- | --- | --- | 50 |
| NM2070 | 54522 | 3 | 3 | 3 | 3 | --- | --- | --- | 25 |
| NM2080 | 54523 | 3-1/2 | 3-1/2 | 3-1/2 | 3-1/2 | --- | --- | --- | 25 |
| NM2090 | 54524 | 4 | 4 | 4 | 4 | --- | --- | --- | 10 |

| Catalog Number | UPC/DEI/NAED Mfg. #018997 | Description | Unit/Std Pkg |
|----------------|---------------------------|--|--------------|
| NM1000 | 54615 | UV rated, non-metallic clip Holds pipe hangers and/or conduit secure on strut Includes 1/4"-20 screw (installed) | 100 |



Our QuickLATCH™ Pipe Hanger installs on Strut Clip™



NM1000
STRUT CLIP
Strut Conduit Support



Arlington®

1 Stauffer Industrial Park
Scranton, PA 18517
800/233.4717 • Fax 570/562.0646
www.aifittings.com

Distributed by