

# Heavy duty, Non-Metallic QuickLATCH™

Made in USA 

**NEW!**  
more on reverse

*Installed Strut Clip • For RIGID and EMT*



**Fast, Easy Installation!**  
*Saves 20 seconds per installation*

Arlington's heavy duty NM3100 series QuickLATCH™ with *installed strut clip* holds RIGID and EMT securely on strut. Use it like a pipe hanger.



NM3100  
1/2" EMT

Stainless steel screw

One-piece QuickLATCH saves time, about 20 seconds per installation... over 33¢ each at \$60.00 per hour labor rate.

Fast and easy to install. Insert the hanger into the strut, twist to lock the pre-installed clip in place then tighten screw to secure QuickLATCH to strut. Push RIGID or EMT into the hanger to lock it in place.



1 Insert QuickLATCH into strut. The strut clip is already attached so you save time.



2 Twist QuickLATCH to seat clip in strut.



3 Tighten screw for secure installation on strut.



4 Push conduit into QuickLATCH to snap in place.



5 Secure installation of conduit to strut.



Easy screwdriver removal

- UV rated, corrosion resistant for outdoor use
- Stainless steel screw
- Mounts vertically or horizontally
- Screwdriver removal, reusable
- Listed for use in environmental air handling spaces per 2020 NEC, article 300.22(c)

**See reverse for even more QuickLATCH products!**

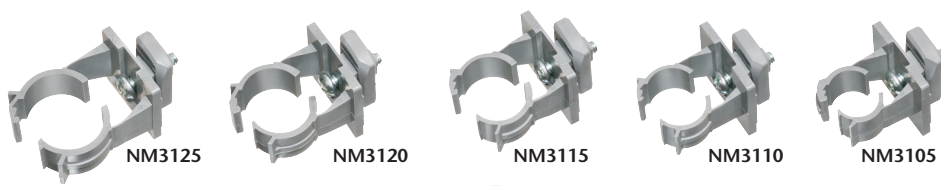
Patent pending



**Arlington®**

1 Stauffer Industrial Park  
Scranton, PA 18517

800/233.4717 • Fax 570/562.0646  
www.aifittings.com

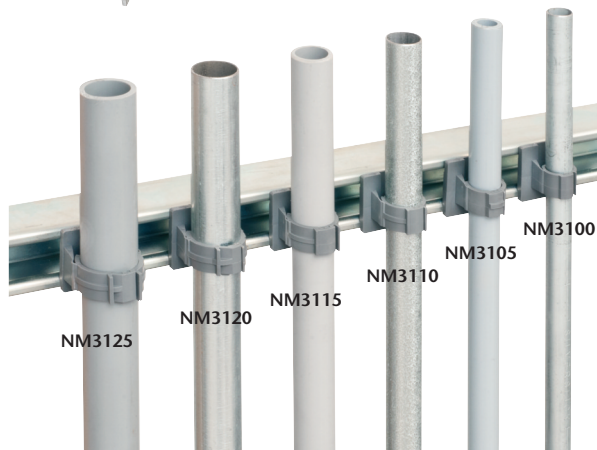


**QUICKLATCH™ PIPE HANGER**

| CATALOG NUMBER | UPC/DEI/NAED MFG. #018997 | RIGID, IMC PVC SIZE | EMT SIZE | STD PKG |
|----------------|---------------------------|---------------------|----------|---------|
| NM3100         | 54027                     | ---                 | 1/2"     | 100     |
| NM3105         | 54028                     | 1/2"                | ---      | 100     |
| NM3110         | 54029                     | ---                 | 3/4"     | 100     |
| NM3115         | 54030                     | 3/4"                | ---      | 100     |
| NM3120         | 54031                     | ---                 | 1"       | 100     |
| NM3125         | 54032                     | 1"                  | ---      | 100     |

Includes 1/4"-20 stainless steel screw and strut clip (installed)

NM3100 series 0120/15M © 2020 Arlington Industries, Inc.



# UV Rated • Non-metallic QuickLATCH™

Made in USA 

*Works just like a Pipe Hanger • Easy to Install*



Mount to surface with a screw.



Press down on pipe to lock it firmly in place.



**Removable** Use screwdriver to lift tab.

Fast and easy to install, one-piece, non-metallic **QuickLATCH™** mounts to walls, metal strut and studs, and threaded rod up to 1/4-20...works with Arlington's Strut Clip™ too. *Strut Clip holds pipe hangers securely on strut.*

It fits 1/2" to 4" EMT, RIGID, IMC and PVC. The larger 2-1/2" to 4" sizes have an extra opening for the optional securing of tie wire or cable tie.

- Corrosion resistant
- Horizontal or vertical mounting
- Integral slot keeps nut from spinning



**2-1/2" to 4"**  
Press pipe into QuickLATCH, up to the first notch to lock it in place. Then squeeze tabs together for a super-secure hold.



| Catalog Number | UPC/DEI/NAED Mfg. #018997 | RIGID, IMC PVC sizes | EMT size | LT size | Flex size | ENT size | Copper Tubing | Copper Pipe | Std Pkg |
|----------------|---------------------------|----------------------|----------|---------|-----------|----------|---------------|-------------|---------|
| NM1900         | 54514                     | ---                  | ---      | 5/16    | ---       | ---      | 1/2           | ---         | 100     |
| NM2000         | 54515                     | ---                  | 1/2      | 3/8     | ---       | ---      | ---           | 3/8         | 100     |
| NM2005         | 54525                     | 1/2                  | ---      | 1/2     | 1/2       | 1/2      | ---           | 1/2         | 100     |
| NM2010         | 54516                     | ---                  | 3/4      | ---     | ---       | ---      | 3/4           | ---         | 100     |
| NM2015         | 54526                     | 3/4                  | ---      | 3/4     | 3/4       | 3/4      | ---           | 3/4         | 100     |
| NM2020         | 54517                     | ---                  | 1        | ---     | ---       | ---      | 1             | ---         | 100     |
| NM2025         | 54518                     | 1                    | ---      | 1       | 1         | 1        | ---           | 1           | 100     |
| NM2030         | 54528                     | ---                  | 1-1/4    | ---     | ---       | ---      | 1-1/4         | ---         | 100     |
| NM2040         | 54519                     | 1-1/4                | 1-1/2    | ---     | ---       | ---      | 1-1/2         | 1-1/4       | 100     |
| NM2045         | 54544                     | 1-1/2                | ---      | 1-1/2   | 1-1/2     | ---      | ---           | 1-1/2       | 100     |
| NM2150         | 54547                     | ---                  | ---      | ---     | ---       | ---      | 2             | ---         | 50      |
| NM2050         | 54520                     | 2                    | 2        | 2       | 2         | ---      | 2             | ---         | 50      |
| NM2060         | 54521                     | 2-1/2                | 2-1/2    | 2-1/2   | 2-1/2     | ---      | ---           | ---         | 50      |
| NM2070         | 54522                     | 3                    | 3        | 3       | 3         | ---      | ---           | ---         | 25      |
| NM2080         | 54523                     | 3-1/2                | 3-1/2    | 3-1/2   | 3-1/2     | ---      | ---           | ---         | 25      |
| NM2090         | 54524                     | 4                    | 4        | 4       | 4         | ---      | ---           | ---         | 10      |

| Catalog Number | UPC/DEI/NAED Mfg. #018997 | Description  | Unit/Std Pkg |
|----------------|---------------------------|--|--------------|
| NM1000         | 54615                     | UV rated, non-metallic clip<br>Holds pipe hangers and/or conduit secure on strut<br>Includes 1/4"-20 screw (installed) | 100          |



Our QuickLATCH™ Pipe Hanger installs on Strut Clip™



NM1000  
STRUT CLIP  
Strut Conduit Support



**Arlington®**

1 Stauffer Industrial Park  
Scranton, PA 18517  
800/233.4717 • Fax 570/562.0646  
www.aifittings.com

Distributed by



# Heavy duty, Non-Metallic QuickLATCH™

Made in USA 

**NEW!**  
more on reverse

*Installed Strut Clip • For RIGID and EMT*



**Fast, Easy Installation!**  
*Saves 20 seconds per installation*

Arlington's heavy duty NM3100 series QuickLATCH™ with *installed strut clip* holds RIGID and EMT securely on strut. Use it like a pipe hanger.



NM3100  
1/2" EMT

Stainless steel screw

One-piece QuickLATCH saves time, about 20 seconds per installation... over 33¢ each at \$60.00 per hour labor rate.

Fast and easy to install. Insert the hanger into the strut, twist to lock the pre-installed clip in place then tighten screw to secure QuickLATCH to strut. Push RIGID or EMT into the hanger to lock it in place.



1 Insert QuickLATCH into strut. The strut clip is already attached so you save time.



2 Twist QuickLATCH to seat clip in strut.



3 Tighten screw for secure installation on strut.



4 Push conduit into QuickLATCH to snap in place.



5 Secure installation of conduit to strut.



Easy screwdriver removal

- UV rated, corrosion resistant for outdoor use
- Stainless steel screw
- Mounts vertically or horizontally
- Screwdriver removal, reusable
- Listed for use in environmental air handling spaces per 2020 NEC, article 300.22(c)

**See reverse for even more QuickLATCH products!**

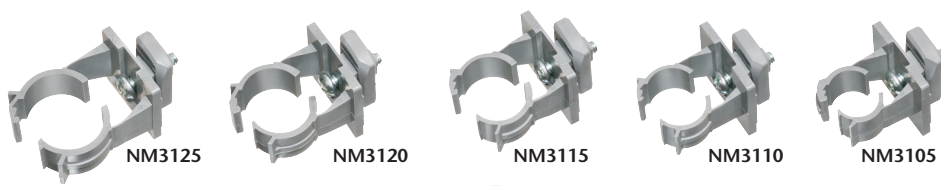
Patent pending



**Arlington®**

1 Stauffer Industrial Park  
Scranton, PA 18517

800/233.4717 • Fax 570/562.0646  
www.aifittings.com

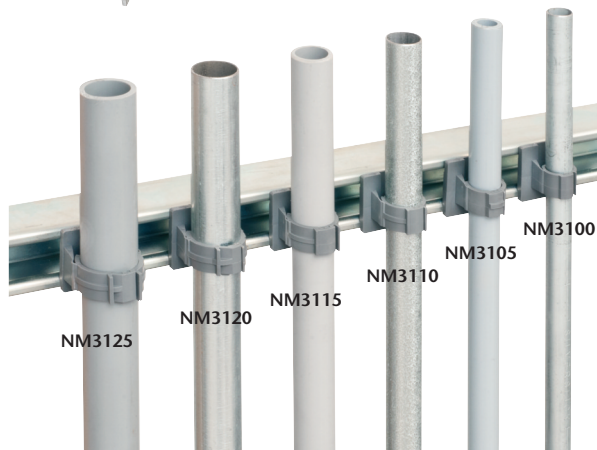


**QUICKLATCH™ PIPE HANGER**

| CATALOG NUMBER | UPC/DEI/NAED MFG. #018997 | RIGID, IMC PVC SIZE | EMT SIZE | STD PKG |
|----------------|---------------------------|---------------------|----------|---------|
| NM3100         | 54027                     | ---                 | 1/2"     | 100     |
| NM3105         | 54028                     | 1/2"                | ---      | 100     |
| NM3110         | 54029                     | ---                 | 3/4"     | 100     |
| NM3115         | 54030                     | 3/4"                | ---      | 100     |
| NM3120         | 54031                     | ---                 | 1"       | 100     |
| NM3125         | 54032                     | 1"                  | ---      | 100     |

Includes 1/4"-20 stainless steel screw and strut clip (installed)

NM3100 series 0120/15M © 2020 Arlington Industries, Inc.



# UV Rated • Non-metallic QuickLATCH™

Made in USA 

*Works just like a Pipe Hanger • Easy to Install*



Mount to surface with a screw.



Press down on pipe to lock it firmly in place.



**Removable** Use screwdriver to lift tab.

Fast and easy to install, one-piece, non-metallic **QuickLATCH™** mounts to walls, metal strut and studs, and threaded rod up to 1/4-20...works with Arlington's Strut Clip™ too. *Strut Clip holds pipe hangers securely on strut.*

It fits 1/2" to 4" EMT, RIGID, IMC and PVC. The larger 2-1/2" to 4" sizes have an extra opening for the optional securing of tie wire or cable tie.

- Corrosion resistant
- Horizontal or vertical mounting
- Integral slot keeps nut from spinning

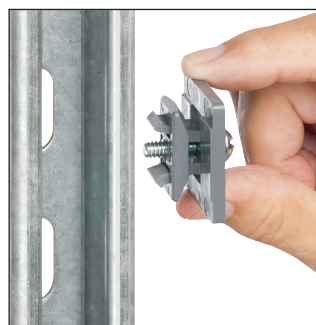
| Catalog Number | UPC/DEI/NAED Mfg. #018997 | RIGID, IMC PVC sizes | EMT size | LT size | Flex size | ENT size | Copper Tubing | Copper Pipe | Std Pkg |
|----------------|---------------------------|----------------------|----------|---------|-----------|----------|---------------|-------------|---------|
| NM1900         | 54514                     | ---                  | ---      | 5/16    | ---       | ---      | 1/2           | ---         | 100     |
| NM2000         | 54515                     | ---                  | 1/2      | 3/8     | ---       | ---      | ---           | 3/8         | 100     |
| NM2005         | 54525                     | 1/2                  | ---      | 1/2     | 1/2       | 1/2      | ---           | 1/2         | 100     |
| NM2010         | 54516                     | ---                  | 3/4      | ---     | ---       | ---      | 3/4           | ---         | 100     |
| NM2015         | 54526                     | 3/4                  | ---      | 3/4     | 3/4       | 3/4      | ---           | 3/4         | 100     |
| NM2020         | 54517                     | ---                  | 1        | ---     | ---       | ---      | 1             | ---         | 100     |
| NM2025         | 54518                     | 1                    | ---      | 1       | 1         | 1        | ---           | 1           | 100     |
| NM2030         | 54528                     | ---                  | 1-1/4    | ---     | ---       | ---      | 1-1/4         | ---         | 100     |
| NM2040         | 54519                     | 1-1/4                | 1-1/2    | ---     | ---       | ---      | 1-1/2         | 1-1/4       | 100     |
| NM2045         | 54544                     | 1-1/2                | ---      | 1-1/2   | 1-1/2     | ---      | ---           | 1-1/2       | 100     |
| NM2150         | 54547                     | ---                  | ---      | ---     | ---       | ---      | 2             | ---         | 50      |
| NM2050         | 54520                     | 2                    | 2        | 2       | 2         | ---      | 2             | ---         | 50      |
| NM2060         | 54521                     | 2-1/2                | 2-1/2    | 2-1/2   | 2-1/2     | ---      | ---           | ---         | 50      |
| NM2070         | 54522                     | 3                    | 3        | 3       | 3         | ---      | ---           | ---         | 25      |
| NM2080         | 54523                     | 3-1/2                | 3-1/2    | 3-1/2   | 3-1/2     | ---      | ---           | ---         | 25      |
| NM2090         | 54524                     | 4                    | 4        | 4       | 4         | ---      | ---           | ---         | 10      |



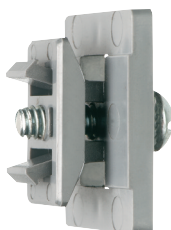
**2-1/2" to 4"**  
Press pipe into QuickLATCH, up to the first notch to lock it in place. Then squeeze tabs together for a super-secure hold.



| Catalog Number | UPC/DEI/NAED Mfg. #018997 | Description STRUT CLIP™  | Unit/Std Pkg |
|----------------|---------------------------|--|--------------|
| NM1000         | 54615                     | UV rated, non-metallic clip<br>Holds pipe hangers and/or conduit secure on strut<br>Includes 1/4"-20 screw (installed) | 100          |



Our QuickLATCH™ Pipe Hanger installs on Strut Clip™



NM1000  
STRUT CLIP  
Strut Conduit Support

**Arlington®**

1 Stauffer Industrial Park  
Scranton, PA 18517  
800/233.4717 • Fax 570/562.0646  
www.aifittings.com

Distributed by