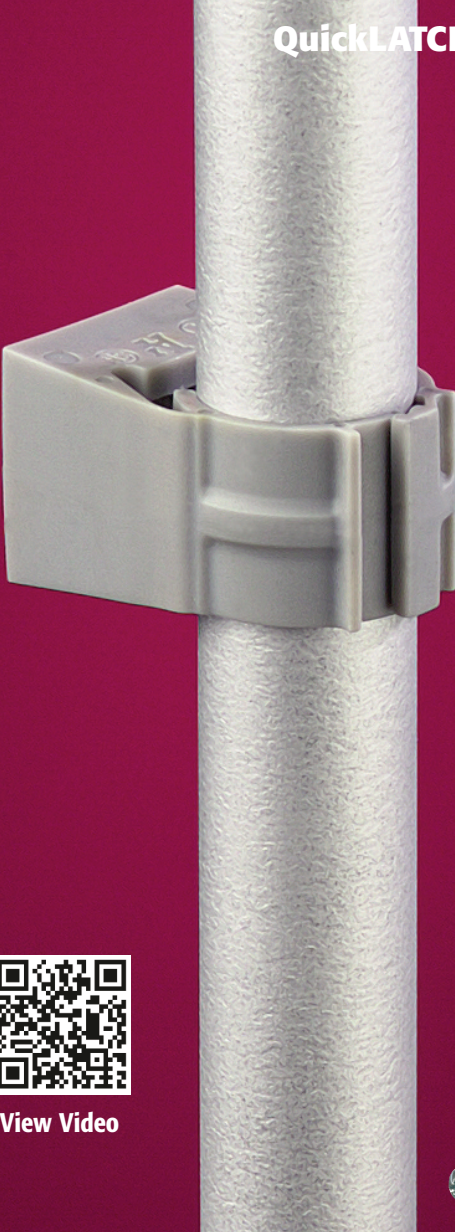


UV Rated • Non-metallic QuickLATCH™

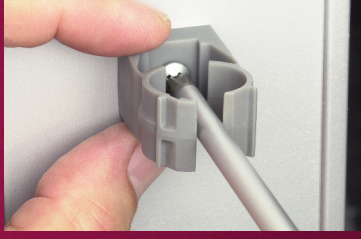
MORE
on
reverse

Works just like a Pipe Hanger • Easy to Install

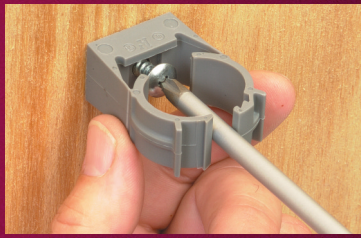
QuickLATCH™ Mounts to Stud...



Wall...


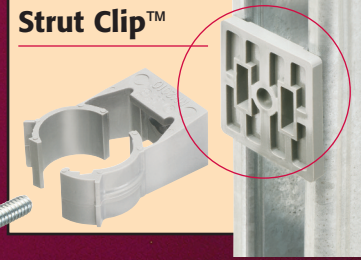


Strut




and Arlington's

Strut Clip™

View Video



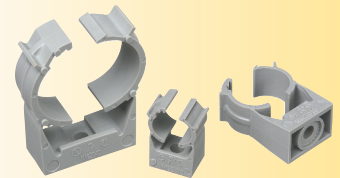
Fast and easy to install, one-piece, non-metallic QuickLATCH™ mounts to walls, metal strut and studs, and threaded rod up to 1/4-20...works with Arlington's Strut Clip™ too. *Strut Clip holds pipe hangers securely on strut.*

It fits 1/2", 3/4", 1", 1-1/4", 1-1/2", 2", and NOW 2-1/2", 3", 3-1/2", and 4" EMT, rigid, IMC and PVC. The larger 2-1/2" to 4" sizes have an additional opening for the optional securing of tie wire or cable tie.

Installation is fast and easy. Snap the conduit into QuickLatch. It locks automatically.

Other features:

- Corrosion resistance
- Horizontal or vertical mounting
- Integral slot prevents nut from spinning
- Listed for environmental air handling spaces, per 2011 NEC code requirement 300-22(c)
- UV rating for outdoor applications
- UL/CSA Listed



Saves 25 seconds per installation!

Costs the same as a steel pipe hanger w/ bolt and nut

Saves more than 15¢ each per \$22/hr labor

Additional Opening for OPTIONAL securing of tie wire



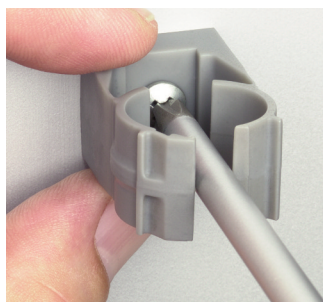
Arlington



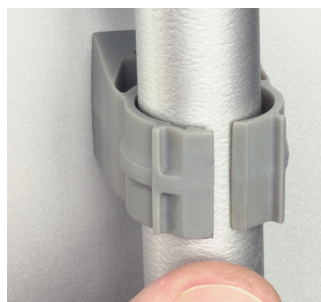
1 Stauffer Industrial Park
Scranton, PA 18517
800/233.4717
Fax 570/562.0646
www.aifittings.com

UV Rated • Non-metallic QuickLATCH™

Works just like a Pipe Hanger • Easy to Install



Mount to surface with a screw.



Press down on pipe to lock it firmly in place.



Removable. Use screwdriver to lift tab.



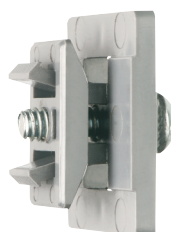
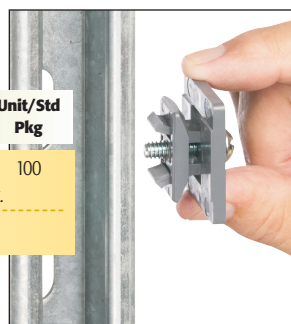
2-1/2" - 4" Press pipe into QuickLATCH, up to the first notch to lock it in place. Finish by squeezing tabs together for a super-secure hold.

Catalog Number	UPC/DEI/NAED Mfg. #018997	Rigid, IMC PVC sizes	EMT size	LT size	Flex size	ENT size	Copper Tubing	Copper Pipe	Std Pkg
NM1900	54514	—	—	5/16	—	—	1/2	—	100
NM2000	54515	—	1/2	3/8	—	—	—	3/8	100
NM2005	54525	1/2	—	1/2	1/2	1/2	—	1/2	100
NM2010	54516	—	3/4	—	—	—	3/4	—	100
NM2015	54526	3/4	—	3/4	3/4	3/4	—	3/4	100
NM2020	54517	—	1	—	—	—	1	—	100
NM2025	54518	1	—	1	1	1	—	1	100
NM2030	54528	—	1-1/4	—	—	—	1-1/4	—	100
NM2040	54519	1-1/4	1-1/2	—	—	—	1-1/2	1-1/4	100
NM2045	54544	1-1/2	—	1-1/2	1-1/2	—	—	1-1/2	100
NM2150	54547	—	—	—	—	—	2	—	50
NM2050	54520	2	2	2	2	—	2	—	50
NM2060	54521	2-1/2	2-1/2	2-1/2	2-1/2	—	—	—	50
NM2070	54522	3	3	3	3	—	—	—	25
NM2080	54523	3-1/2	3-1/2	3-1/2	3-1/2	—	—	—	25
NM2090	54524	4	4	4	4	—	—	—	10



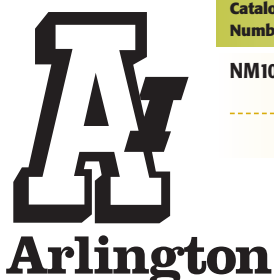
Our QuickLATCH™ Pipe Hanger installs on Strut Clip™

Catalog Number	UPC/DEI/NAED Mfg. #018997	Description STRUT CLIP™	Unit/Std Pkg
NM1000	54615	UV rated, non-metallic 'clip'. Holds pipe hangers and/or conduit secure on strut. Includes 1/4"-20 screw (installed)	100



NM1000 STRUT CLIP Strut Conduit Support

Distributed by



1 Stauffer Industrial Park
Scranton, PA 18517
800/233.4717
Fax 570/562.0646
www.aifittings.com

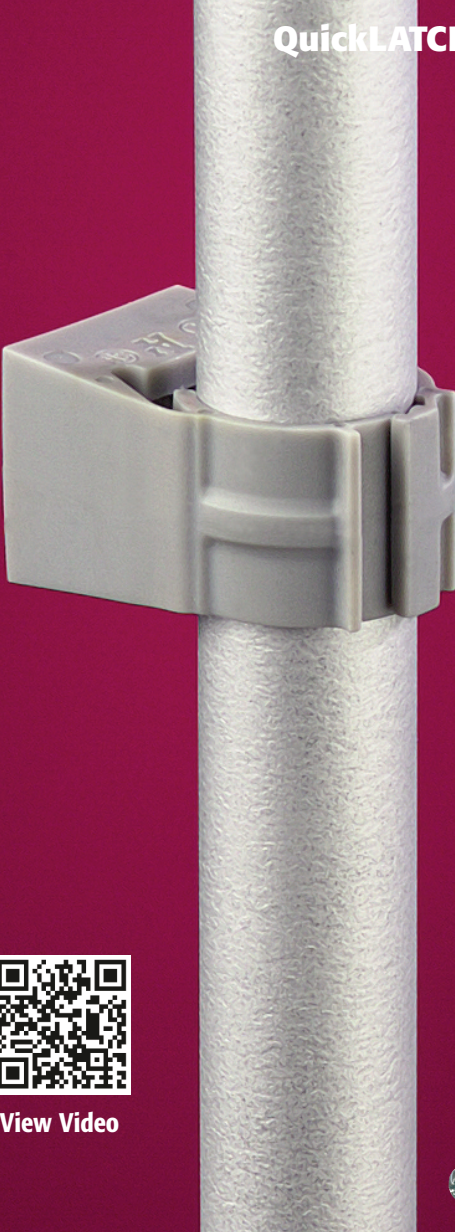
REV QuickLATCH 0912/25M

UV Rated • Non-metallic QuickLATCH™

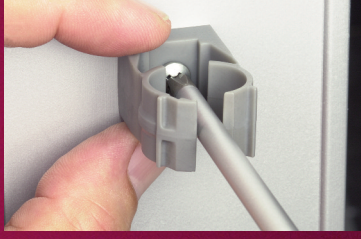
MORE
on
reverse

Works just like a Pipe Hanger • Easy to Install

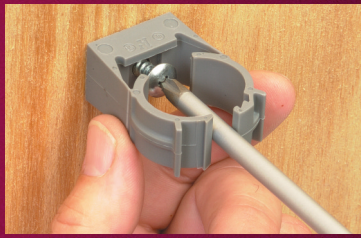
QuickLATCH™ Mounts to Stud...



Wall...


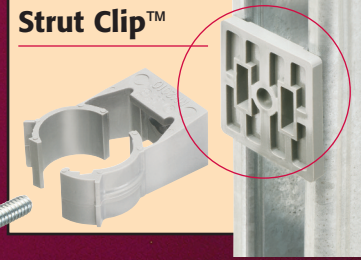


Strut




and Arlington's

Strut Clip™

View Video



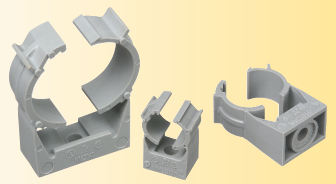
Fast and easy to install, one-piece, non-metallic QuickLATCH™ mounts to walls, metal strut and studs, and threaded rod up to 1/4-20...works with Arlington's Strut Clip™ too. *Strut Clip holds pipe hangers securely on strut.*

It fits 1/2", 3/4", 1", 1-1/4", 1-1/2", 2", and NOW 2-1/2", 3", 3-1/2", and 4" EMT, rigid, IMC and PVC. The larger 2-1/2" to 4" sizes have an additional opening for the optional securing of tie wire or cable tie.

Installation is fast and easy. Snap the conduit into QuickLatch. It locks automatically.

Other features:

- Corrosion resistance
- Horizontal or vertical mounting
- Integral slot prevents nut from spinning
- Listed for environmental air handling spaces, per 2011 NEC code requirement 300-22(c)
- UV rating for outdoor applications
- UL/CSA Listed



Saves 25 seconds per installation!

Costs the same as a steel pipe hanger w/ bolt and nut

Saves more than 15¢ each per \$22/hr labor

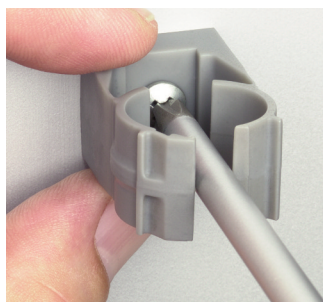


Arlington

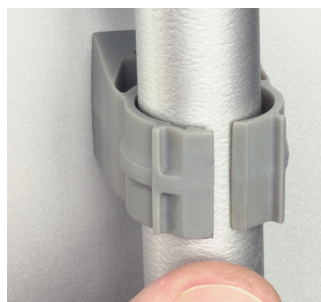
1 Stauffer Industrial Park
Scranton, PA 18517
800/233.4717
Fax 570/562.0646
www.aifittings.com

UV Rated • Non-metallic QuickLATCH™

Works just like a Pipe Hanger • Easy to Install



Mount to surface with a screw.



Press down on pipe to lock it firmly in place.



Removable. Use screwdriver to lift tab.



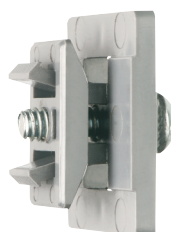
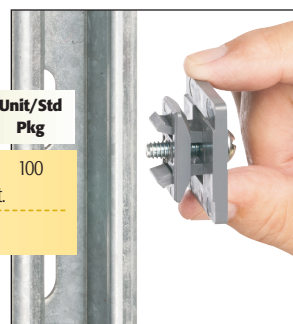
2-1/2" - 4" Press pipe into QuickLATCH, up to the first notch to lock it in place. Finish by squeezing tabs together for a super-secure hold.

Catalog Number	UPC/DEI/NAED Mfg. #018997	Rigid, IMC PVC sizes	EMT size	LT size	Flex size	ENT size	Copper Tubing	Copper Pipe	Std Pkg
NM1900	54514	—	—	5/16	—	—	1/2	—	100
NM2000	54515	—	1/2	3/8	—	—	—	3/8	100
NM2005	54525	1/2	—	1/2	1/2	1/2	—	1/2	100
NM2010	54516	—	3/4	—	—	—	3/4	—	100
NM2015	54526	3/4	—	3/4	3/4	3/4	—	3/4	100
NM2020	54517	—	1	—	—	—	1	—	100
NM2025	54518	1	—	1	1	1	—	1	100
NM2030	54528	—	1-1/4	—	—	—	1-1/4	—	100
NM2040	54519	1-1/4	1-1/2	—	—	—	1-1/2	1-1/4	100
NM2045	54544	1-1/2	—	1-1/2	1-1/2	—	—	1-1/2	100
NM2150	54547	—	—	—	—	—	2	—	50
NM2050	54520	2	2	2	2	—	2	—	50
NM2060	54521	2-1/2	2-1/2	2-1/2	2-1/2	—	—	—	50
NM2070	54522	3	3	3	3	—	—	—	25
NM2080	54523	3-1/2	3-1/2	3-1/2	3-1/2	—	—	—	25
NM2090	54524	4	4	4	4	—	—	—	10



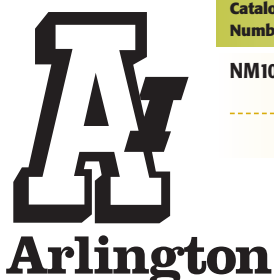
Our QuickLATCH™ Pipe Hanger installs on Strut Clip™

Catalog Number	UPC/DEI/NAED Mfg. #018997	Description STRUT CLIP™	Unit/Std Pkg
NM1000	54615	UV rated, non-metallic 'clip'. Holds pipe hangers and/or conduit secure on strut. Includes 1/4"-20 screw (installed)	100



NM1000 STRUT CLIP Strut Conduit Support

Distributed by



1 Stauffer Industrial Park
Scranton, PA 18517
800/233.4717
Fax 570/562.0646
www.aifittings.com

REV QuickLATCH 0912/25M