

## LBY Series Service Entrance Elbows for Hazardous Locations

### Description:

Plasti-Bond REDH<sub>2</sub>OT LBY type elbows are used as service entrance elbows between service entrance and vertical weatherhead conduit runs, to change direction of a conduit run 90° when space is limited, and for pull outlets. They may be used for general service or hazardous locations.

### Features:

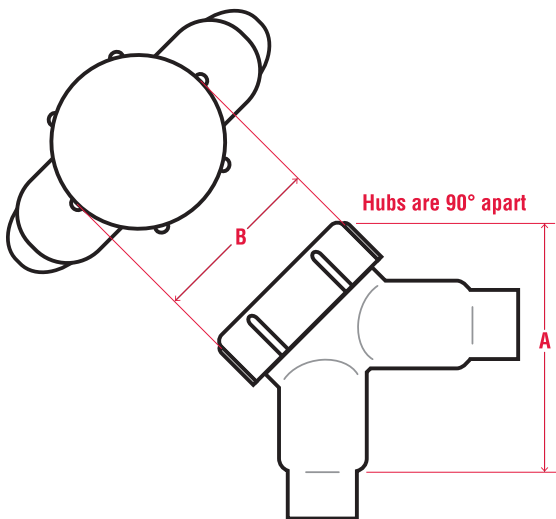
- 40 mil gray PVC exterior coating
- 2 mil red urethane interior coating
- 5 trade sizes from 1/2" through 1-1/2"
- Sealing sleeves on all conduit openings
- Molded PVC gasket seals fitting cover to body

### Standards:

#### Series PRLBY15 through PRLBY55

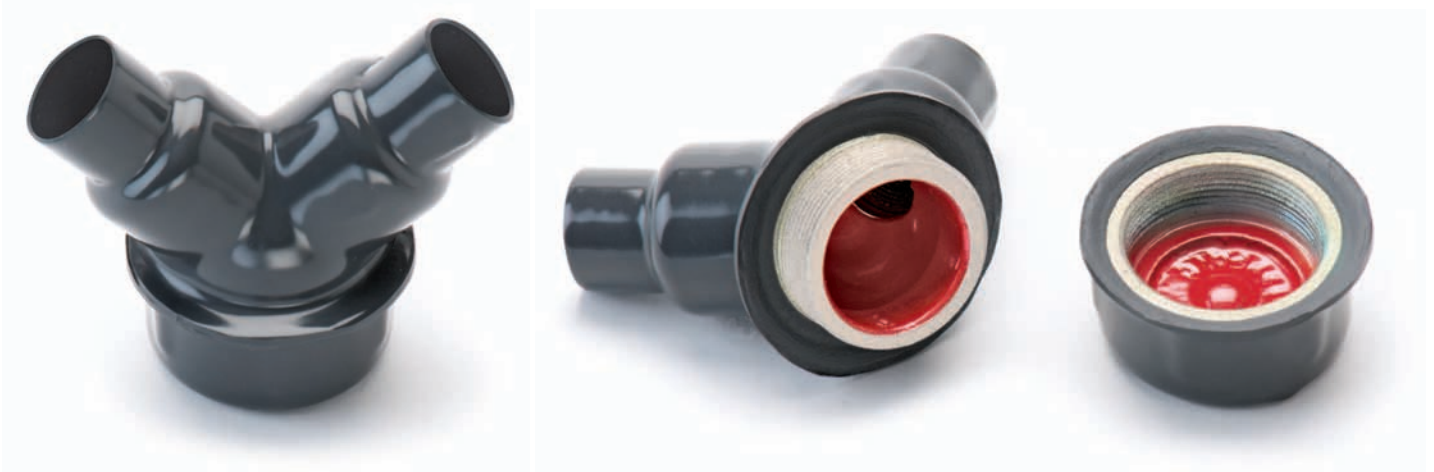
- NEC/CEC
  - Class I, Division 1 & 2, Groups C, D
  - Class II, Division 1, Groups E, F, G
  - Class II, Division 2, Groups F, G
  - Class III

## LBY Series Technical Data



### LBY SERIES – FOR HAZARDOUS LOCATIONS

| PIPE SIZE | FERROUS CATALOG # | A    | B    | NOMINAL WEIGHT | ALUMINUM CATALOG # |
|-----------|-------------------|------|------|----------------|--------------------|
| 1/2"      | PRLBY15           | 2.81 | 2.08 | 1.0            | PRLBY15SA          |
| 3/4"      | PRLBY25           | 3.19 | 2.33 | 1.2            | PRLBY25SA          |
| 1"        | PRLBY35           | 3.25 | 2.58 | 1.7            | PRLBY35SA          |
| 1-1/4"    | PRLBY45           | 3.78 | 3.02 | 2.5            | PRLBY45SA          |
| 1-1/2"    | PRLBY55           | 4.50 | 3.46 | 2.7            | PRLBY55SA          |



## LBY Series Service Entrance Elbows for Hazardous Locations

### Description:

Plasti-Bond REDH<sub>2</sub>OT LBY type elbows are used as service entrance elbows between service entrance and vertical weatherhead conduit runs, to change direction of a conduit run 90° when space is limited, and for pull outlets. They may be used for general service or hazardous locations.

### Features:

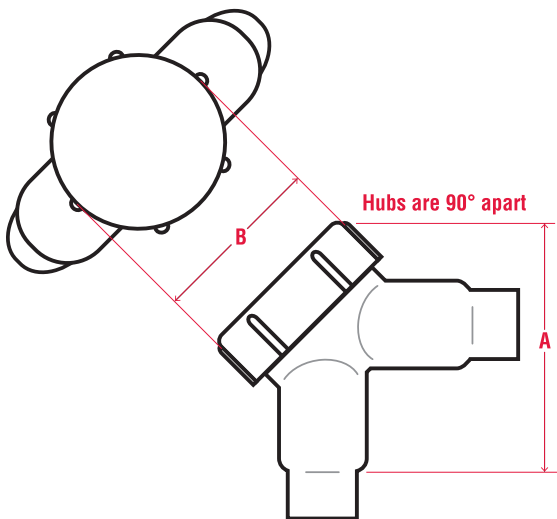
- 40 mil gray PVC exterior coating
- 2 mil red urethane interior coating
- 5 trade sizes from 1/2" through 1-1/2"
- Sealing sleeves on all conduit openings
- Molded PVC gasket seals fitting cover to body

### Standards:

#### Series PRLBY15 through PRLBY55

- NEC/CEC
  - Class I, Division 1 & 2, Groups C, D
  - Class II, Division 1, Groups E, F, G
  - Class II, Division 2, Groups F, G
  - Class III

## LBY Series Technical Data



### LBY SERIES – FOR HAZARDOUS LOCATIONS

| PIPE SIZE | FERROUS CATALOG # | A    | B    | NOMINAL WEIGHT | ALUMINUM CATALOG # |
|-----------|-------------------|------|------|----------------|--------------------|
| 1/2"      | PRLBY15           | 2.81 | 2.08 | 1.0            | PRLBY15SA          |
| 3/4"      | PRLBY25           | 3.19 | 2.33 | 1.2            | PRLBY25SA          |
| 1"        | PRLBY35           | 3.25 | 2.58 | 1.7            | PRLBY35SA          |
| 1-1/4"    | PRLBY45           | 3.78 | 3.02 | 2.5            | PRLBY45SA          |
| 1-1/2"    | PRLBY55           | 4.50 | 3.46 | 2.7            | PRLBY55SA          |