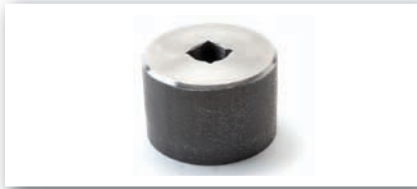


## Spin-It



With the Plasti-Bond **Spin-It**, Plasti-Bond REDH<sub>2</sub>OT can be tightened much faster than with conventional tools. Because the **Spin-It** never touches the coating, damage to the conduit is eliminated.

CATALOG #	DESCRIPTION
SPSPIN-IT-3/4	3/4" Spin-It
SPSPIN-IT-1	1" Spin-It
SPSPIN-IT-1-1/4	1-1/4" Spin-It
SPSPIN-IT-1-1/2	1-1/2" Spin-It
SPSPIN-IT-2	2" Spin-It

## Plasti-Socket



**Plasti-Socket** is a fiber-glass encapsulated 3/8" drive socket for use with the square fiberglass encapsulated U bolt and beam clamp nuts used in the Plasti-Bond RED-H<sub>2</sub>OT conduit support system. The **Plasti-Socket** helps avoid coating damage from metal sockets, pliers or wrenches.

CATALOG #	DESCRIPTION
PSPLASTISOCKET-3/8	3/8" Plasti-Socket

## Z-Wrench



**Z-Wrench** features extra wide jaws which spread the clamping force, enabling the tool to grip without marring the surface of the conduit. The "V" shaped upper jaw allows **Z-Wrench** to accommodate a wide range of conduit sizes. Shallow grooves in the upper and lower jaws provide an excellent grip.

CATALOG #	DESCRIPTION
SPJPZ1	1/2" - 1-1/4" Z-Wrench
SPJPZ2	1-1/2" - 2-1/2" Z-Wrench

## JAWS 3



**JAWS 3** are a set of aluminum-nickel-bronze vise jaws designed to replace the regular jaws in a RIGID #23 or #40-A pipe vise. They completely protect the exterior coating from damage caused by the vise jaws when cutting or threading.

CATALOG #	DESCRIPTION
JWJAWS3-#23	JAWS3 #23 Pipe Vise
JWJAWS3-#40-A	JAWS3 #40-A Tripod Pipe Vise

## Half Shell Clamps



**Half Shell Clamps** are designed to cover a large surface area when clamping conduit, especially in a chain vise. This allows for a strong grip without damaging the exterior coating.

CATALOG #	DESCRIPTION
JWHLF-SHL-CLP2	2" Half-Shell Conduit Clamp
JWHLF-SHL-CLP2-1/2	2-1/2" Half-Shell Conduit Clamp
JWHLF-SHL-CLP3	3" Half-Shell Conduit Clamp
JWHLF-SHL-CLP3-1/2	3-1/2" Half-Shell Conduit Clamp
JWHLF-SHL-CLP4	4" Half-Shell Conduit Clamp
JWHLF-SHL-CLP5	5" Half-Shell Conduit Clamp
JWHLF-SHL-CLP6	6" Half-Shell Conduit Clamp

## Hickey



The **Plasti-Bond Hickey** is a special bending tool with a 40 mil PVC coating which reduces the possibility of damage during conduit bending.

CATALOG #	DESCRIPTION
PBHICKEY	1/2" & 3/4" Conduit Bender

## Touch Up & Repair Compounds

Plasti-Bond REDH<sub>2</sub>OT Touchup Compounds are available to repair minor damage to the exterior PVC factory coating. The exterior PVC touchup compound is gray and available in a 12 oz. aerosol can, and a pint can with brush-top applicator.

The approved thread compound touchup compound is available in a pint can with a brush-top applicator.

See the installation section of the buyers' guide for more information on using the Plasti-Bond touchup compounds.



### PLASTI-BOND TOUCH UP COMPOUNDS

CATALOG #	DESCRIPTION	SIZE
PBTOUCHUP-SPRAY	Exterior Spray Type (Gray)	12 oz.
PBTOUCHUP-GRAY-PT	Exterior Non-Spray with Brush-Top (Gray)	1 pt.
PBTHREAD-COMPOUND	Approved Conductive Compound-Brush-Top Pint	1 pt.



The PVC-Coating Repair Kit is a UL recognized two part epoxy capable of bonding to PVC and steel or aluminum substrates. It includes all necessary tools in order to repair the damaged area and is dark grey in color.

### PVC-COATING REPAIR KIT

CATALOG #	DESCRIPTION
PBPVCREPAIR-KIT	PVC-Coating Repair Kit

## Spin-It



With the Plasti-Bond **Spin-It**, Plasti-Bond REDH<sub>2</sub>OT can be tightened much faster than with conventional tools. Because the **Spin-It** never touches the coating, damage to the conduit is eliminated.

CATALOG #	DESCRIPTION
SPSPIN-IT-3/4	3/4" Spin-It
SPSPIN-IT-1	1" Spin-It
SPSPIN-IT-1-1/4	1-1/4" Spin-It
SPSPIN-IT-1-1/2	1-1/2" Spin-It
SPSPIN-IT-2	2" Spin-It

## Plasti-Socket



**Plasti-Socket** is a fiber-glass encapsulated 3/8" drive socket for use with the square fiberglass encapsulated U bolt and beam clamp nuts used in the Plasti-Bond RED-H<sub>2</sub>OT conduit support system. The **Plasti-Socket** helps avoid coating damage from metal sockets, pliers or wrenches.

CATALOG #	DESCRIPTION
PSPLASTISOCKET-3/8	3/8" Plasti-Socket

## Z-Wrench



**Z-Wrench** features extra wide jaws which spread the clamping force, enabling the tool to grip without marring the surface of the conduit. The "V" shaped upper jaw allows **Z-Wrench** to accommodate a wide range of conduit sizes. Shallow grooves in the upper and lower jaws provide an excellent grip.

CATALOG #	DESCRIPTION
SPJPZ1	1/2" - 1-1/4" Z-Wrench
SPJPZ2	1-1/2" - 2-1/2" Z-Wrench

## JAWS 3



**JAWS 3** are a set of aluminum-nickel-bronze vise jaws designed to replace the regular jaws in a RIGID #23 or #40-A pipe vise. They completely protect the exterior coating from damage caused by the vise jaws when cutting or threading.

CATALOG #	DESCRIPTION
JWJAWS3-#23	JAWS3 #23 Pipe Vise
JWJAWS3-#40-A	JAWS3 #40-A Tripod Pipe Vise

## Half Shell Clamps



**Half Shell Clamps** are designed to cover a large surface area when clamping conduit, especially in a chain vise. This allows for a strong grip without damaging the exterior coating.

CATALOG #	DESCRIPTION
JWHLF-SHL-CLP2	2" Half-Shell Conduit Clamp
JWHLF-SHL-CLP2-1/2	2-1/2" Half-Shell Conduit Clamp
JWHLF-SHL-CLP3	3" Half-Shell Conduit Clamp
JWHLF-SHL-CLP3-1/2	3-1/2" Half-Shell Conduit Clamp
JWHLF-SHL-CLP4	4" Half-Shell Conduit Clamp
JWHLF-SHL-CLP5	5" Half-Shell Conduit Clamp
JWHLF-SHL-CLP6	6" Half-Shell Conduit Clamp

## Hickey



The **Plasti-Bond Hickey** is a special bending tool with a 40 mil PVC coating which reduces the possibility of damage during conduit bending.

CATALOG #	DESCRIPTION
PBHICKEY	1/2" & 3/4" Conduit Bender

## Touch Up & Repair Compounds

Plasti-Bond REDH<sub>2</sub>OT Touchup Compounds are available to repair minor damage to the exterior PVC factory coating. The exterior PVC touchup compound is gray and available in a 12 oz. aerosol can, and a pint can with brush-top applicator.

The approved thread compound touchup compound is available in a pint can with a brush-top applicator.

See the installation section of the buyers' guide for more information on using the Plasti-Bond touchup compounds.



### PLASTI-BOND TOUCH UP COMPOUNDS

CATALOG #	DESCRIPTION	SIZE
PBTOUCHUP-SPRAY	Exterior Spray Type (Gray)	12 oz.
PBTOUCHUP-GRAY-PT	Exterior Non-Spray with Brush-Top (Gray)	1 pt.
PBTHREAD-COMPOUND	Approved Conductive Compound-Brush-Top Pint	1 pt.



The PVC-Coating Repair Kit is a UL recognized two part epoxy capable of bonding to PVC and steel or aluminum substrates. It includes all necessary tools in order to repair the damaged area and is dark grey in color.

### PVC-COATING REPAIR KIT

CATALOG #	DESCRIPTION
PBPVCREPAIR-KIT	PVC-Coating Repair Kit