

## FEATURES & SPECIFICATIONS

**INTENDED USE** — Designed for use in open area applications and electronic offices where optical control, visual comfort and light cut-off are important.

Attributes: Design optimized for use with T8 lamps and low-profile electronic ballasts.

Aluminum louvers utilize the latest developments in louver finishing for minimized louver iridescence.

**CONSTRUCTION** — Black reveal provides floating louver appearance, conceals optional air-supply slots.

Square corner end plates improve strength and durability.

Integral T-bar safety clips hold fixture to T-bar securely; no fasteners required.

Heavy-gauge hinges die-formed for maximum strength; spring action latches concealed in black reveal.

Housing formed from cold-rolled steel. Louver formed from anodized aluminum. No asbestos used in this product.

Finish: Five-stage iron-phosphate pretreatment ensures superior paint adhesion. Painted parts finished with high-gloss, baked white enamel.

**ELECTRICAL** — Electronic ballasts are sound rated A. Full light output, reduced energy. Less than 10% THD multi-volt operation (120-277).

Fixture conforms to UL1570 and is suitable for damp locations. AWM, TFN or THHN wire used throughout, rated for required temperatures.

**LISTINGS** — UL Listed (Standard).

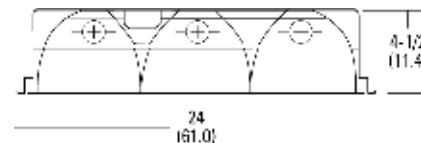
**WARRANTY** — 2-year limited warranty. Complete warranty terms located at [www.acuitybrands.com/CustomerResources/Terms\\_and\\_conditions.aspx](http://www.acuitybrands.com/CustomerResources/Terms_and_conditions.aspx)

NOTE: Actual performance may differ as a result of end-user environment and application. Specifications subject to change without notice.

Catalog Number
Notes
Type

Contractor Select

# Parabolics



### Specifications PT2U 2x2: 9-cell

Length: 24 (61.0)  
 Width: 24 (61.0)  
 Depth: 4-1/2 (11.4)  
 Weight: 15 lbs (6.8 kg)

### Specifications PT3 2x4: 18-cell

Length: 48 (122.0)  
 Width: 24 (61.0)  
 Depth: 4-1/2 (11.4)  
 Weight: 32 lbs (14.5 kg)

All dimensions are inches (centimeters) unless otherwise indicated.

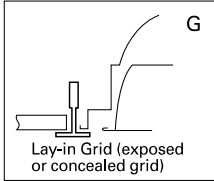
## ORDERING INFORMATION

Catalog Number	UPC	Description	# of Lamps	# of Cells	Wattage	Voltage	Ballast type	# of Ballasts	Lamp type	Pre-wired	Lamp included	Pallet qty.
PT3 MV	745975079155	2x4 recessed, static	3	18	32	120-277	Electronic, instant start	1	N/A	N	N	20
PT3L MV	745975079421	2x4 recessed, static	3	18	32	120-277	Electronic, instant start	1	3500 K	N	Y	20
PT3LW MV	745975079360	2x4 recessed, static	3	18	32	120-277	Electronic, instant start	1	3500 K	Y	Y	20
PT3 2MV	745975118373	2x4 recessed, static	3	18	32	120-277	Electronic, instant start	2	N/A	N	N	20
PT3A MV	745975079513	2x4 recessed, air	3	18	32	120-277	Electronic, instant start	1	N/A	N	N	20
PT2U MV	745975079247	2x2 recessed, static	2	9	32-U lamp	120-277	Electronic, instant start	1	N/A	N	N	40
PT2UA MV	745975490417	2x2 recessed, air	2	9	32-U lamp	120-277	Electronic, instant start	1	N/A	N	N	40
PT2UALW MV	745975466580	2x2 recessed, air	2	9	32-U lamp	120-277	Electronic, instant start	1	3500 K	Y	Y	40
PT3L41 MV	745976877781	2x4 recessed, static	3	18	32	120-277	Electronic, instant start	1	4100 K	N	Y	20
PT3L41W MV	745975728473	2x4 recessed, static	3	18	32	120-277	Electronic, instant start	1	4100 K	Y	Y	20
PT3ALW MV	745975466528	2x4 recessed, air	3	18	32	120-277	Electronic, instant start	1	3500 K	N	Y	20

# Parabolics 2'x4' and 2'x2'

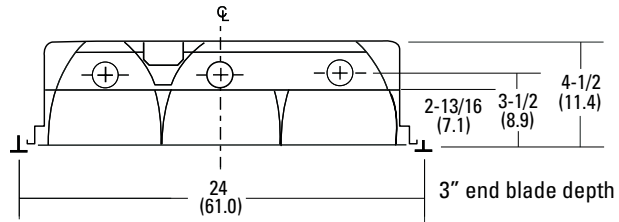
## MOUNTING DATA

Ceiling Type	Appropriate Trim Type
Exposed grid tee	G
Concealed grid tee	G, ST



## DIMENSIONS

All dimensions are inches (centimeters) unless otherwise indicated.



## PHOTOMETRICS

Calculated using the zonal cavity method in accordance with IESNA LM41 procedures. Floor reflectances are 20%. Lamp configurations shown are typical. Full photometric data on these and other configurations available upon request.

TEST NO: LTL14671 CS

PT3 MV

LUMENS PER LAMP: 2850 LUM. EFF. - 75.1%

LAMPS PER LUMINAIRE: 3

RCR	pf	Coefficients of Utilization								
		20%								
		80%			70%			50%		
pc	50%	30%	10%	50%	30%	10%	50%	30%	10%	
pw	50%	30%	10%	50%	30%	10%	50%	30%	10%	
0	89	89	89	87	87	87	83	83	83	
1	80	78	75	79	76	74	76	74	72	
2	71	67	63	70	66	63	67	64	61	
3	64	58	54	62	57	53	60	56	53	
4	57	51	46	56	50	46	54	49	45	
5	51	45	40	50	44	40	49	44	40	
6	46	40	35	45	39	35	44	39	35	
7	42	36	31	41	35	31	40	35	31	
8	38	32	28	38	32	28	37	31	28	
9	35	29	25	34	29	25	34	28	25	
10	32	26	23	32	26	23	31	26	22	

### Zonal Lumen Summary

Zone	Lumens	% Lamp	% Fixture
0° - 30°	1982.1	23.2	30.9
0° - 40°	3413.2	39.9	53.1
0° - 60°	5866.8	68.6	91.4
0° - 90°	6422.1	75.1	100.0
90° - 180°	0.0	0.0	0.0
0° - 180°	6422.1	75.1	100.0

## FEATURES & SPECIFICATIONS

**INTENDED USE** — Designed for use in open area applications and electronic offices where optical control, visual comfort and light cut-off are important.

Attributes: Design optimized for use with T8 lamps and low-profile electronic ballasts.

Aluminum louvers utilize the latest developments in louver finishing for minimized louver iridescence.

**CONSTRUCTION** — Black reveal provides floating louver appearance, conceals optional air-supply slots.

Square corner end plates improve strength and durability.

Integral T-bar safety clips hold fixture to T-bar securely; no fasteners required.

Heavy-gauge hinges die-formed for maximum strength; spring action latches concealed in black reveal.

Housing formed from cold-rolled steel. Louver formed from anodized aluminum. No asbestos used in this product.

Finish: Five-stage iron-phosphate pretreatment ensures superior paint adhesion. Painted parts finished with high-gloss, baked white enamel.

**ELECTRICAL** — Electronic ballasts are sound rated A. Full light output, reduced energy. Less than 10% THD multi-volt operation (120-277).

Fixture conforms to UL1570 and is suitable for damp locations. AWM, TFN or THHN wire used throughout, rated for required temperatures.

**LISTINGS** — UL Listed (Standard).

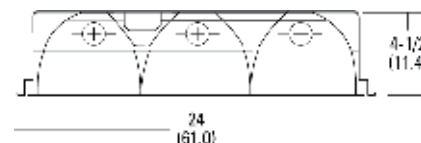
**WARRANTY** — 2-year limited warranty. Complete warranty terms located at [www.acuitybrands.com/CustomerResources/Terms\\_and\\_conditions.aspx](http://www.acuitybrands.com/CustomerResources/Terms_and_conditions.aspx)

NOTE: Actual performance may differ as a result of end-user environment and application. Specifications subject to change without notice.

Catalog Number
Notes
Type

Contractor Select

# Parabolics



### Specifications PT2U 2x2: 9-cell

Length: 24 (61.0)  
 Width: 24 (61.0)  
 Depth: 4-1/2 (11.4)  
 Weight: 15 lbs (6.8 kg)

### Specifications PT3 2x4: 18-cell

Length: 48 (122.0)  
 Width: 24 (61.0)  
 Depth: 4-1/2 (11.4)  
 Weight: 32 lbs (14.5 kg)

All dimensions are inches (centimeters) unless otherwise indicated.

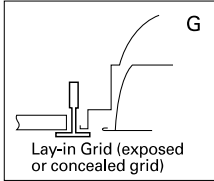
## ORDERING INFORMATION

Catalog Number	UPC	Description	# of Lamps	# of Cells	Wattage	Voltage	Ballast type	# of Ballasts	Lamp type	Pre-wired	Lamp included	Pallet qty.
PT3 MV	745975079155	2x4 recessed, static	3	18	32	120-277	Electronic, instant start	1	N/A	N	N	20
PT3L MV	745975079421	2x4 recessed, static	3	18	32	120-277	Electronic, instant start	1	3500 K	N	Y	20
PT3LW MV	745975079360	2x4 recessed, static	3	18	32	120-277	Electronic, instant start	1	3500 K	Y	Y	20
PT3 2MV	745975118373	2x4 recessed, static	3	18	32	120-277	Electronic, instant start	2	N/A	N	N	20
PT3A MV	745975079513	2x4 recessed, air	3	18	32	120-277	Electronic, instant start	1	N/A	N	N	20
PT2U MV	745975079247	2x2 recessed, static	2	9	32-U lamp	120-277	Electronic, instant start	1	N/A	N	N	40
PT2UA MV	745975490417	2x2 recessed, air	2	9	32-U lamp	120-277	Electronic, instant start	1	N/A	N	N	40
PT2UALW MV	745975466580	2x2 recessed, air	2	9	32-U lamp	120-277	Electronic, instant start	1	3500 K	Y	Y	40
PT3L41 MV	74597687781	2x4 recessed, static	3	18	32	120-277	Electronic, instant start	1	4100 K	N	Y	20
PT3L41W MV	745975728473	2x4 recessed, static	3	18	32	120-277	Electronic, instant start	1	4100 K	Y	Y	20
PT3ALW MV	745975466528	2x4 recessed, air	3	18	32	120-277	Electronic, instant start	1	3500 K	N	Y	20

# Parabolics 2'x4' and 2'x2'

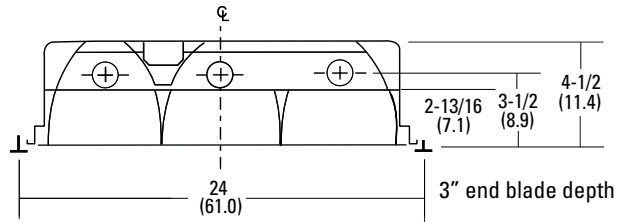
## MOUNTING DATA

Ceiling Type	Appropriate Trim Type
Exposed grid tee	G
Concealed grid tee	G, ST



## DIMENSIONS

All dimensions are inches (centimeters) unless otherwise indicated.



## PHOTOMETRICS

Calculated using the zonal cavity method in accordance with IESNA LM41 procedures. Floor reflectances are 20%. Lamp configurations shown are typical. Full photometric data on these and other configurations available upon request.

TEST NO: LTL14671 CS

PT3 MV

LUMENS PER LAMP: 2850 LUM. EFF. - 75.1%

LAMPS PER LUMINAIRE: 3

RCR	Coefficients of Utilization										
	20%										
	80%			70%			50%				
pf	pc	pw	50%	30%	10%	50%	30%	10%	50%	30%	10%
0	89	89	89	87	87	87	83	83	83		
1	80	78	75	79	76	74	76	74	72		
2	71	67	63	70	66	63	67	64	61		
3	64	58	54	62	57	53	60	56	53		
4	57	51	46	56	50	46	54	49	45		
5	51	45	40	50	44	40	49	44	40		
6	46	40	35	45	39	35	44	39	35		
7	42	36	31	41	35	31	40	35	31		
8	38	32	28	38	32	28	37	31	28		
9	35	29	25	34	29	25	34	28	25		
10	32	26	23	32	26	23	31	26	22		

### Zonal Lumen Summary

Zone	Lumens	% Lamp	% Fixture
0° - 30°	1982.1	23.2	30.9
0° - 40°	3413.2	39.9	53.1
0° - 60°	5866.8	68.6	91.4
0° - 90°	6422.1	75.1	100.0
90° - 180°	0.0	0.0	0.0
0° - 180°	6422.1	75.1	100.0