

FEATURES & SPECIFICATIONS

INTENDED USE — Designed for use in open area applications and electronic offices where optical control, visual comfort and light cut-off are important.

Attributes: Design optimized for use with T8 lamps and low-profile electronic ballasts.

Aluminum louvers utilize the latest developments in louver finishing for minimized louver iridescence.

CONSTRUCTION — Black reveal provides floating louver appearance, conceals optional air-supply slots.

Square corner end plates improve strength and durability.

Integral T-bar safety clips hold fixture to T-bar securely; no fasteners required.

Heavy-gauge hinges die-formed for maximum strength; spring action latches concealed in black reveal.

Housing formed from cold-rolled steel. Louver formed from anodized aluminum. No asbestos used in this product.

Finish: Five-stage iron-phosphate pretreatment ensures superior paint adhesion. Painted parts finished with high-gloss, baked white enamel.

ELECTRICAL — Electronic ballasts are sound rated A. Full light output, reduced energy. Less than 10% THD multi-volt operation (120-277).

Fixture conforms to UL1570 and is suitable for damp locations. AWM, TFN or THHN wire used throughout, rated for required temperatures.

LISTINGS — UL Listed (Standard).

WARRANTY — 2-year limited warranty. Complete warranty terms located at

www.acuitybrands.com/CustomerResources/Terms_and_conditions.aspx

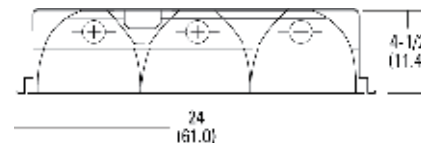
NOTE: Actual performance may differ as a result of end-user environment and application.

Specifications subject to change without notice.

| |
|----------------|
| Catalog Number |
| Notes |
| Type |

Contractor Select

Parabolics



Specifications PT2U 2x2: 9-cell

Length: 24 (61.0)

Width: 24 (61.0)

Depth: 4-1/2 (11.4)

Weight: 15 lbs (6.8 kg)

Specifications PT3 2x4: 18-cell

Length: 48 (122.0)

Width: 24 (61.0)

Depth: 4-1/2 (11.4)

Weight: 32 lbs (14.5 kg)

All dimensions are inches (centimeters) unless otherwise indicated.

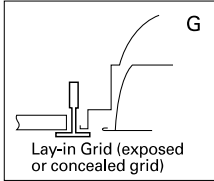
ORDERING INFORMATION

| Catalog Number | UPC | Description | # of Lamps | # of Cells | Wattage | Voltage | Ballast type | # of Ballasts | Lamp type | Pre-wired | Lamp included | Pallet qty. |
|----------------|--------------|----------------------|------------|------------|-----------|---------|---------------------------|---------------|-----------|-----------|---------------|-------------|
| PT3 MV | 745975079155 | 2x4 recessed, static | 3 | 18 | 32 | 120-277 | Electronic, instant start | 1 | N/A | N | N | 20 |
| PT3L MV | 745975079421 | 2x4 recessed, static | 3 | 18 | 32 | 120-277 | Electronic, instant start | 1 | 3500 K | N | Y | 20 |
| PT3LW MV | 745975079360 | 2x4 recessed, static | 3 | 18 | 32 | 120-277 | Electronic, instant start | 1 | 3500 K | Y | Y | 20 |
| PT3 2MV | 745975118373 | 2x4 recessed, static | 3 | 18 | 32 | 120-277 | Electronic, instant start | 2 | N/A | N | N | 20 |
| PT3A MV | 745975079513 | 2x4 recessed, air | 3 | 18 | 32 | 120-277 | Electronic, instant start | 1 | N/A | N | N | 20 |
| PT2U MV | 745975079247 | 2x2 recessed, static | 2 | 9 | 32-U lamp | 120-277 | Electronic, instant start | 1 | N/A | N | N | 40 |
| PT2UA MV | 745975490417 | 2x2 recessed, air | 2 | 9 | 32-U lamp | 120-277 | Electronic, instant start | 1 | N/A | N | N | 40 |
| PT2UALW MV | 745975466580 | 2x2 recessed, air | 2 | 9 | 32-U lamp | 120-277 | Electronic, instant start | 1 | 3500 K | Y | Y | 40 |
| PT3L41 MV | 745976877781 | 2x4 recessed, static | 3 | 18 | 32 | 120-277 | Electronic, instant start | 1 | 4100 K | N | Y | 20 |
| PT3L41W MV | 745975728473 | 2x4 recessed, static | 3 | 18 | 32 | 120-277 | Electronic, instant start | 1 | 4100 K | Y | Y | 20 |
| PT3ALW MV | 745975466528 | 2x4 recessed, air | 3 | 18 | 32 | 120-277 | Electronic, instant start | 1 | 3500 K | N | Y | 20 |

Parabolics 2'x4' and 2'x2'

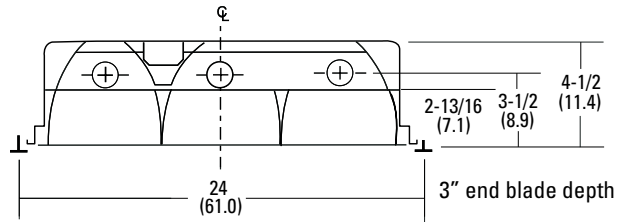
MOUNTING DATA

| Ceiling Type | Appropriate Trim Type |
|--------------------|-----------------------|
| Exposed grid tee | G |
| Concealed grid tee | G, ST |



DIMENSIONS

All dimensions are inches (centimeters) unless otherwise indicated.



PHOTOMETRICS

Calculated using the zonal cavity method in accordance with IESNA LM41 procedures. Floor reflectances are 20%. Lamp configurations shown are typical. Full photometric data on these and other configurations available upon request.

TEST NO: LTL14671 CS

PT3 MV

LUMENS PER LAMP: 2850 LUM. EFF. - 75.1%

LAMPS PER LUMINAIRE: 3

| RCR | Coefficients of Utilization | | | | | | | | | | |
|-----|-----------------------------|----|-----|-----|-----|-----|-----|-----|-----|-----|-----|
| | 20% | | | | | | | | | | |
| | 80% | | | 70% | | | 50% | | | | |
| pf | pc | pw | 50% | 30% | 10% | 50% | 30% | 10% | 50% | 30% | 10% |
| 0 | 89 | 89 | 89 | 87 | 87 | 87 | 83 | 83 | 83 | | |
| 1 | 80 | 78 | 75 | 79 | 76 | 74 | 76 | 74 | 72 | | |
| 2 | 71 | 67 | 63 | 70 | 66 | 63 | 67 | 64 | 61 | | |
| 3 | 64 | 58 | 54 | 62 | 57 | 53 | 60 | 56 | 53 | | |
| 4 | 57 | 51 | 46 | 56 | 50 | 46 | 54 | 49 | 45 | | |
| 5 | 51 | 45 | 40 | 50 | 44 | 40 | 49 | 44 | 40 | | |
| 6 | 46 | 40 | 35 | 45 | 39 | 35 | 44 | 39 | 35 | | |
| 7 | 42 | 36 | 31 | 41 | 35 | 31 | 40 | 35 | 31 | | |
| 8 | 38 | 32 | 28 | 38 | 32 | 28 | 37 | 31 | 28 | | |
| 9 | 35 | 29 | 25 | 34 | 29 | 25 | 34 | 28 | 25 | | |
| 10 | 32 | 26 | 23 | 32 | 26 | 23 | 31 | 26 | 22 | | |

Zonal Lumen Summary

| Zone | Lumens | % Lamp | % Fixture |
|------------|--------|--------|-----------|
| 0° - 30° | 1982.1 | 23.2 | 30.9 |
| 0° - 40° | 3413.2 | 39.9 | 53.1 |
| 0° - 60° | 5866.8 | 68.6 | 91.4 |
| 0° - 90° | 6422.1 | 75.1 | 100.0 |
| 90° - 180° | 0.0 | 0.0 | 0.0 |
| 0° - 180° | 6422.1 | 75.1 | 100.0 |

FEATURES & SPECIFICATIONS

INTENDED USE — Designed for use in open area applications and electronic offices where optical control, visual comfort and light cut-off are important.

Attributes: Design optimized for use with T8 lamps and low-profile electronic ballasts.

Aluminum louvers utilize the latest developments in louver finishing for minimized louver iridescence.

CONSTRUCTION — Black reveal provides floating louver appearance, conceals optional air-supply slots.

Square corner end plates improve strength and durability.

Integral T-bar safety clips hold fixture to T-bar securely; no fasteners required.

Heavy-gauge hinges die-formed for maximum strength; spring action latches concealed in black reveal.

Housing formed from cold-rolled steel. Louver formed from anodized aluminum. No asbestos used in this product.

Finish: Five-stage iron-phosphate pretreatment ensures superior paint adhesion. Painted parts finished with high-gloss, baked white enamel.

ELECTRICAL — Electronic ballasts are sound rated A. Full light output, reduced energy. Less than 10% THD multi-volt operation (120-277).

Fixture conforms to UL1570 and is suitable for damp locations. AWM, TFN or THHN wire used throughout, rated for required temperatures.

LISTINGS — UL Listed (Standard).

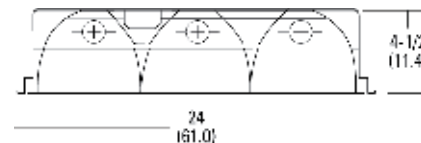
WARRANTY — 2-year limited warranty. Complete warranty terms located at www.acuitybrands.com/CustomerResources/Terms_and_conditions.aspx

NOTE: Actual performance may differ as a result of end-user environment and application. Specifications subject to change without notice.

| |
|----------------|
| Catalog Number |
| Notes |
| Type |

Contractor Select

Parabolics



Specifications PT2U 2x2: 9-cell

Length: 24 (61.0)
 Width: 24 (61.0)
 Depth: 4-1/2 (11.4)
 Weight: 15 lbs (6.8 kg)

Specifications PT3 2x4: 18-cell

Length: 48 (122.0)
 Width: 24 (61.0)
 Depth: 4-1/2 (11.4)
 Weight: 32 lbs (14.5 kg)

All dimensions are inches (centimeters) unless otherwise indicated.

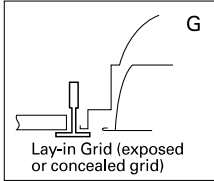
ORDERING INFORMATION

| Catalog Number | UPC | Description | # of Lamps | # of Cells | Wattage | Voltage | Ballast type | # of Ballasts | Lamp type | Pre-wired | Lamp included | Pallet qty. |
|----------------|--------------|----------------------|------------|------------|-----------|---------|---------------------------|---------------|-----------|-----------|---------------|-------------|
| PT3 MV | 745975079155 | 2x4 recessed, static | 3 | 18 | 32 | 120-277 | Electronic, instant start | 1 | N/A | N | N | 20 |
| PT3L MV | 745975079421 | 2x4 recessed, static | 3 | 18 | 32 | 120-277 | Electronic, instant start | 1 | 3500 K | N | Y | 20 |
| PT3LW MV | 745975079360 | 2x4 recessed, static | 3 | 18 | 32 | 120-277 | Electronic, instant start | 1 | 3500 K | Y | Y | 20 |
| PT3 2MV | 745975118373 | 2x4 recessed, static | 3 | 18 | 32 | 120-277 | Electronic, instant start | 2 | N/A | N | N | 20 |
| PT3A MV | 745975079513 | 2x4 recessed, air | 3 | 18 | 32 | 120-277 | Electronic, instant start | 1 | N/A | N | N | 20 |
| PT2U MV | 745975079247 | 2x2 recessed, static | 2 | 9 | 32-U lamp | 120-277 | Electronic, instant start | 1 | N/A | N | N | 40 |
| PT2UA MV | 745975490417 | 2x2 recessed, air | 2 | 9 | 32-U lamp | 120-277 | Electronic, instant start | 1 | N/A | N | N | 40 |
| PT2UALW MV | 745975466580 | 2x2 recessed, air | 2 | 9 | 32-U lamp | 120-277 | Electronic, instant start | 1 | 3500 K | Y | Y | 40 |
| PT3L41 MV | 745976877781 | 2x4 recessed, static | 3 | 18 | 32 | 120-277 | Electronic, instant start | 1 | 4100 K | N | Y | 20 |
| PT3L41W MV | 745975728473 | 2x4 recessed, static | 3 | 18 | 32 | 120-277 | Electronic, instant start | 1 | 4100 K | Y | Y | 20 |
| PT3ALW MV | 745975466528 | 2x4 recessed, air | 3 | 18 | 32 | 120-277 | Electronic, instant start | 1 | 3500 K | N | Y | 20 |

Parabolics 2'x4' and 2'x2'

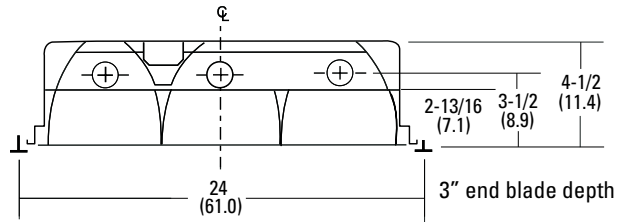
MOUNTING DATA

| Ceiling Type | Appropriate Trim Type |
|--------------------|-----------------------|
| Exposed grid tee | G |
| Concealed grid tee | G, ST |



DIMENSIONS

All dimensions are inches (centimeters) unless otherwise indicated.



PHOTOMETRICS

Calculated using the zonal cavity method in accordance with IESNA LM41 procedures. Floor reflectances are 20%. Lamp configurations shown are typical. Full photometric data on these and other configurations available upon request.

TEST NO: LTL14671 CS

PT3 MV

LUMENS PER LAMP: 2850 LUM. EFF. - 75.1%

LAMPS PER LUMINAIRE: 3

| RCR | pf | Coefficients of Utilization | | | | | | | | |
|-----|----|-----------------------------|-----|-----|-----|-----|-----|-----|-----|-----|
| | | 80% | | | 70% | | | 50% | | |
| | | 50% | 30% | 10% | 50% | 30% | 10% | 50% | 30% | 10% |
| 0 | 89 | 89 | 89 | 87 | 87 | 87 | 83 | 83 | 83 | |
| 1 | 80 | 78 | 75 | 79 | 76 | 74 | 76 | 74 | 72 | |
| 2 | 71 | 67 | 63 | 70 | 66 | 63 | 67 | 64 | 61 | |
| 3 | 64 | 58 | 54 | 62 | 57 | 53 | 60 | 56 | 53 | |
| 4 | 57 | 51 | 46 | 56 | 50 | 46 | 54 | 49 | 45 | |
| 5 | 51 | 45 | 40 | 50 | 44 | 40 | 49 | 44 | 40 | |
| 6 | 46 | 40 | 35 | 45 | 39 | 35 | 44 | 39 | 35 | |
| 7 | 42 | 36 | 31 | 41 | 35 | 31 | 40 | 35 | 31 | |
| 8 | 38 | 32 | 28 | 38 | 32 | 28 | 37 | 31 | 28 | |
| 9 | 35 | 29 | 25 | 34 | 29 | 25 | 34 | 28 | 25 | |
| 10 | 32 | 26 | 23 | 32 | 26 | 23 | 31 | 26 | 22 | |

Zonal Lumen Summary

| Zone | Lumens | % Lamp | % Fixture |
|------------|--------|--------|-----------|
| 0° - 30° | 1982.1 | 23.2 | 30.9 |
| 0° - 40° | 3413.2 | 39.9 | 53.1 |
| 0° - 60° | 5866.8 | 68.6 | 91.4 |
| 0° - 90° | 6422.1 | 75.1 | 100.0 |
| 90° - 180° | 0.0 | 0.0 | 0.0 |
| 0° - 180° | 6422.1 | 75.1 | 100.0 |