

RT-200 Astronomical Time Switch

Turns lights on and off relative to dusk or dawn, or at selected times of day

Bright OLED display for clear viewing from a wide angle

Activates lighting on selected days of the week



Ideal for any application where precise time-based control is desired

Includes eight programmable control schedules

Compliant with California Title 24-2013 (outdoor lighting)

PROJECT

LOCATION/TYPE

Product Overview

Description

The RT-200 Astronomical Time Switch automatically turns lighting or other loads on and off according to user programming. It replaces standard single-pole wall switches for energy savings and security.

Operation

Users can manually turn the connected load on or off by pressing the on/off button. Prior to automatic operation, the local longitude, latitude, time and date must be entered into the time switch. The user can then program up to eight schedules to automatically turn the connected load on and off at the desired times. If lighting has been turned on manually prior to a scheduled on-time, it will remain on until the next scheduled off-time, or until turned off manually. If enabled, an audible beep and/or a visible flash warn of an impending automatic off-time.

On/off Programs

Each of the eight automatic control programs includes user selectable day(s) of operation and on and off times. Day(s) of operation choices include: everyday, weekdays, weekends, a selected day or no days, to deactivate the program. On- and off-time choices include: specific time of day, or up to 99 minutes before or after dusk or dawn.

Applications

The RT-200 Astronomical Time Switch is an ideal control choice for both outdoor and indoor lighting as well as spas. The astronomic clock function saves energy by automatically making daily adjustments to on- and off-times as the days become longer or shorter, so lighting is only turned on when it is needed. Both the astronomic and scheduling functions provide security by automatically turning lighting on to make the application feel inviting and to provide a lived-in look.

Features

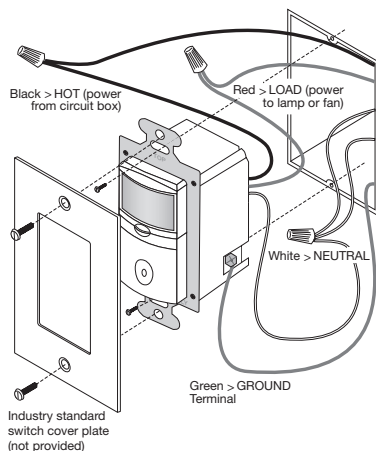
- User programmable wall switch for astronomical and scheduled control
- Replaces single-pole switch
- Optional audible beep and visible light flash warnings before automatic off
- 72 hour power failure memory
- Lighted switch for visibility in darkened rooms
- Low-profile styling
- Choice of five decorator colors
- Operates most common types of lighting
- Relay-based switching
- Zero crossing reduces stress on the relay and increases product longevity
- No current leakage to load in off mode for safety
- Compatible with decorator wall plates
- CA Title 24-2013 compliant (outdoor lighting)

Specifications

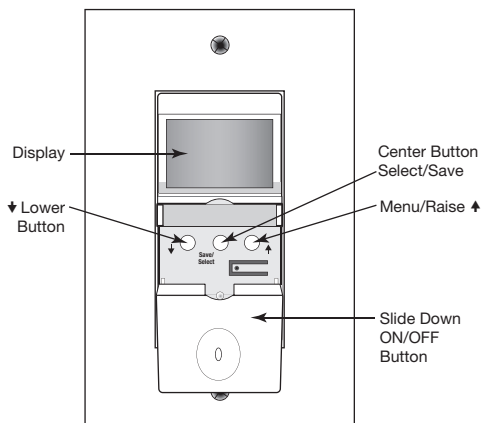
- 120VAC, 50/60 Hz; neutral required
- Load ratings: 0-800W incandescent, LED, fluorescent, compact fluorescent (CFL), magnetic low voltage (MLV), electronic low voltage (ELV), and 1/6 Hp motor
- 8 programmable schedules for on/off times on selected days of the week
- 170° OLED display
- 2.63" x 1.69" x 1.88" (67.8mm x 42.9mm x 47.8mm) L x W x D
- Operating conditions: 32-122°F (0-50°C), 95% RH, non-condensing; for indoor use only
- UL and cUL listed
- Five year warranty

Installation & Controls

Wiring Diagram

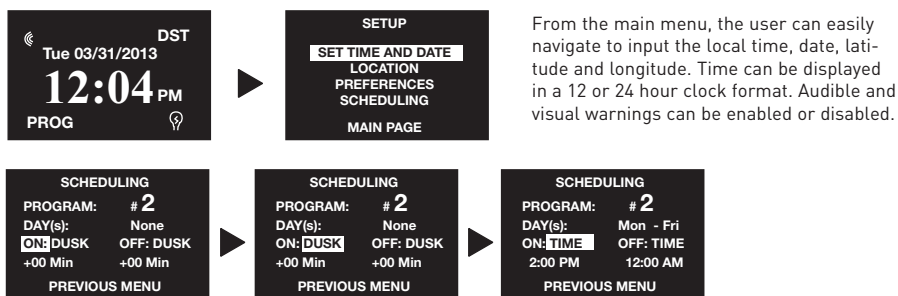


Product Controls



Programming

Data Entry and Program Options



Optional settings for each of the eight programs include:

- Day(s) of week:
- None (program off)
 - All (seven days)
 - Monday-Friday
 - Weekends
 - Specific day of week
- On-time:
- Specific time
 - Up to 99 minutes before or after dusk
- Off-time:
- Specific time
 - Up to 99 minutes before or after dawn

Ordering Information

Catalog No.	Color	Description	Voltage	Load Rating
<input type="checkbox"/> RT-200-W	White	Astronomical Time Switch	120 VAC; 50/60 Hz	0-800W incandescent, LED, fluorescent, CFL, MLV, ELV, 1/6 Hp motor load
<input type="checkbox"/> RT-200-I	Ivory			
<input type="checkbox"/> RT-200-LA	Lt. Almond			
<input type="checkbox"/> RT-200-A	Almond			
<input type="checkbox"/> RT-200-B	Black			

Order wall plate separately.

RT-200 Astronomical Time Switch

Turns lights on and off relative to dusk or dawn, or at selected times of day

Bright OLED display for clear viewing from a wide angle

Activates lighting on selected days of the week



Ideal for any application where precise time-based control is desired

Includes eight programmable control schedules

Compliant with California Title 24-2013 (outdoor lighting)

PROJECT

LOCATION/TYPE

Product Overview

Description

The RT-200 Astronomical Time Switch automatically turns lighting or other loads on and off according to user programming. It replaces standard single-pole wall switches for energy savings and security.

Operation

Users can manually turn the connected load on or off by pressing the on/off button. Prior to automatic operation, the local longitude, latitude, time and date must be entered into the time switch. The user can then program up to eight schedules to automatically turn the connected load on and off at the desired times. If lighting has been turned on manually prior to a scheduled on-time, it will remain on until the next scheduled off-time, or until turned off manually. If enabled, an audible beep and/or a visible flash warn of an impending automatic off-time.

On/off Programs

Each of the eight automatic control programs includes user selectable day(s) of operation and on and off times. Day(s) of operation choices include: everyday, weekdays, weekends, a selected day or no days, to deactivate the program. On- and off-time choices include: specific time of day, or up to 99 minutes before or after dusk or dawn.

Applications

The RT-200 Astronomical Time Switch is an ideal control choice for both outdoor and indoor lighting as well as spas. The astronomic clock function saves energy by automatically making daily adjustments to on- and off-times as the days become longer or shorter, so lighting is only turned on when it is needed. Both the astronomic and scheduling functions provide security by automatically turning lighting on to make the application feel inviting and to provide a lived-in look.

Features

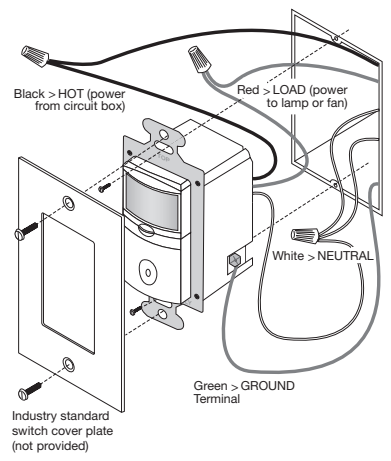
- User programmable wall switch for astronomical and scheduled control
- Replaces single-pole switch
- Optional audible beep and visible light flash warnings before automatic off
- 72 hour power failure memory
- Lighted switch for visibility in darkened rooms
- Low-profile styling
- Choice of five decorator colors
- Operates most common types of lighting
- Relay-based switching
- Zero crossing reduces stress on the relay and increases product longevity
- No current leakage to load in off mode for safety
- Compatible with decorator wall plates
- CA Title 24-2013 compliant (outdoor lighting)

Specifications

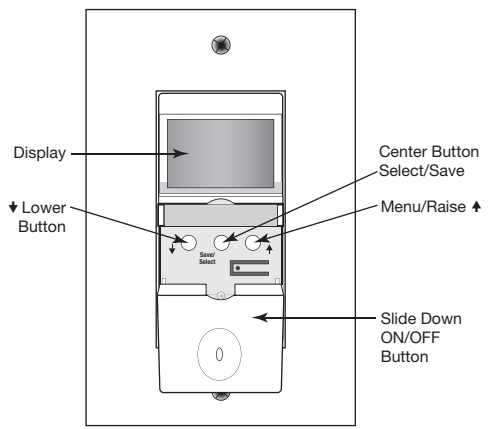
- 120VAC, 50/60 Hz; neutral required
- Load ratings: 0-800W incandescent, LED, fluorescent, compact fluorescent (CFL), magnetic low voltage (MLV), electronic low voltage (ELV), and 1/6 Hp motor
- 8 programmable schedules for on/off times on selected days of the week
- 170° OLED display
- 2.63" x 1.69" x 1.88" (67.8mm x 42.9mm x 47.8mm) L x W x D
- Operating conditions: 32-122°F (0-50°C), 95% RH, non-condensing; for indoor use only
- UL and cUL listed
- Five year warranty

Installation & Controls

Wiring Diagram



Product Controls



Programming

Data Entry and Program Options

From the main menu, the user can easily navigate to input the local time, date, latitude and longitude. Time can be displayed in a 12 or 24 hour clock format. Audible and visual warnings can be enabled or disabled.

Optional settings for each of the eight programs include:

- Day(s) of week:
 - None (program off)
 - All (seven days)
 - Monday-Friday
 - Weekends
 - Specific day of week
- On-time:
 - Specific time
 - Up to 99 minutes before or after dusk
- Off-time:
 - Specific time
 - Up to 99 minutes before or after dawn

Ordering Information

Catalog No.	Color	Description	Voltage	Load Rating
<input type="checkbox"/> RT-200-W	White	Astronomical Time Switch	120 VAC; 50/60 Hz	0-800W incandescent, LED, fluorescent, CFL, MLV, ELV, 1/6 Hp motor load
<input type="checkbox"/> RT-200-I	Ivory			
<input type="checkbox"/> RT-200-LA	Lt. Almond			
<input type="checkbox"/> RT-200-A	Almond			
<input type="checkbox"/> RT-200-B	Black			

Order wall plate separately.