



SINGLE PIECE STRUT CLAMP FOR CABLE/CONDUIT, 0.34"–0.71" OD, 1/2" EMT

CATALOG NUMBER

SCH8B



CERTIFICATIONS



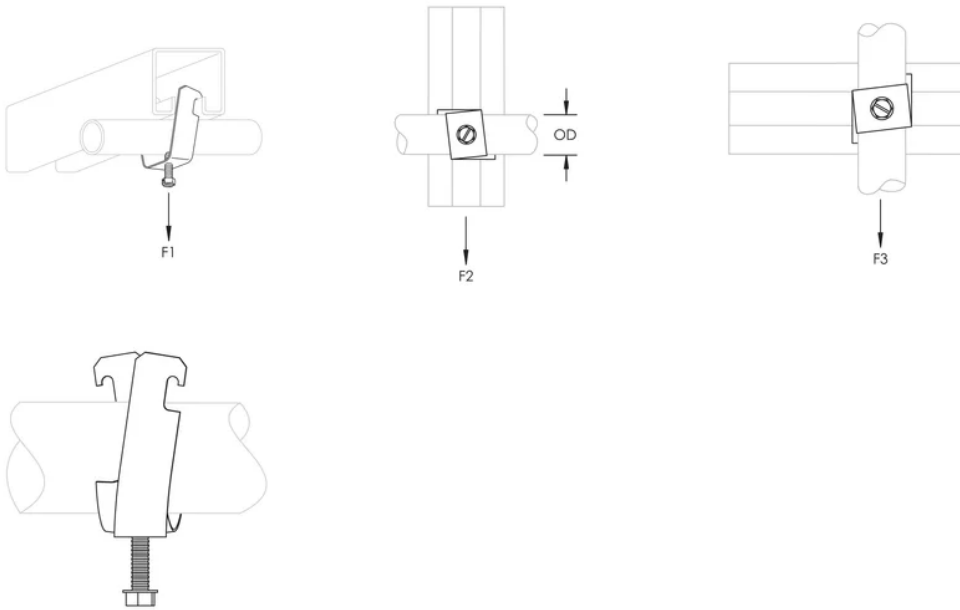
FEATURES

- One-piece cable/conduit clamp with protective boot
- No screws or bolts to drop
- Requires only a screwdriver or nutdriver for installation
- Fits into open side of strut channel
- FM® Specification Tested (from 1/2" to 4" of EMT Conduit Size)

PRODUCT ATTRIBUTES

- Material: Steel
- Finish: Electrogalvanized
- Outer Diameter (OD): 0.34 – 0.71"
- EMT Conduit Size: 1/2"
- Static Load 1 (F1): 200 lb
- Ultimate Static Load 2 (F2): 75 lb
- Ultimate Static Load 3 (F3): 50 lb

DIAGRAMS



WARNING

nVent products shall be installed and used only as indicated in nVent's product instruction sheets and training materials. Instruction sheets are available at www.nvent.com and from your nVent customer service representative. Improper installation, misuse, misapplication or other failure to completely follow nVent's instructions and warnings may cause product malfunction, property damage, serious bodily injury and death and/or void your warranty.

North America

+1.800.753.9221
Option 1 – Customer Care
Option 2 – Technical Support

Europe

Netherlands:
+31 800-0200135
France:
+33 800 901 793

Europe

Germany:
800 1890272
Other Countries:
+31 13 5835404

APAC

Shanghai:
+ 86 21 2412 1618/19
Sydney:
+61 2 9751 8500



Our powerful portfolio of brands:
nVent.com **CADDY ERICO HOFFMAN RAYCHEM SCHROFF**
TRACER